

**DM-ADTTR-012
DISPLAY ADAPTER FOR
HDMI TO EDP**

Contents

1	Revision History	3
2	Main Features	3
3	Pin Description	4
3.1	CN7 - eDP 0.5mm 30pin interface.....	4
3.2	CN1-HDMI interface.....	5
3.3	CN2- VGA interface	5
3.4	CN8-Keypad.....	6
3.5	CN6-Speaker output pin	6
4	Mechanical Drawing.....	7
5	Connector instruction	8
6	Electric Characteristics	8
7	VGA Mode table.....	9
8	Warranty and Conditions	9

1 Revision History

Date	Changes
2018-05-16	First release

2 Main Features

Item	Specification	Unit
HDMI to eDP	30pin eDP output	
VGA to eDP	30pin eDP output	
Maximum Resolution	1920*1200	
Main chip	RTD2556-CG	
Audio	Analog input/output(option)	
Main chip	RTD2556-CG	
Option Menu	Chinese ,English	

3 Pin Description

3.1 CN7 - eDP 0.5mm 30pin interface

Pin No.	Symbol	Function Description
1	NC	No connection
2	LED_VCC	BL POWER
3	LED_VCC	BL POWER
4	LED_VCC	BL POWER
5	LED_VCC	BL POWER
6	NC	No connection
7	NC	No connection
8	LED_PWM	LED Dimming Control
9	LED_EN	LED BL_Enable control
10	GND	GROUND
11	GND	GROUND
12	GND	GROUND
13	GND	GROUND
14	HPD	Hot Plug Detect
15	GND	GROUND
16	GND	GROUND
17	NC	No connection
18	VCCS	Power Supply
19	VSSC	Power Supply
20	GND	GROUND
21	AUX-	Complement Signal-Auxiliary Chanel
22	AUX+	True Signal-Auxiliary Chanel
23	GND	GROUND
24	ML0+	True Signal-Main Lane 0
25	ML0-	Complement Signal Lane 0
26	GND	GROUND
27	ML1+	True Signal-Main Lane 1
28	ML1-	Complement Signal Lane 1
29	GND	GROUND
30	NC	No connection

3.2 CN1-HDMI interface

Pin No.	Symbol	Function Description
1	DATA2+	Data
2	GND	GROUND
3	DATA2-	Data
4	DATA1+	Data
5	GND	GROUND
6	DATA1-	Data
7	DATA0+	Data
8	GND	GROUND
9	DATA0-	Data
10	DCLK+	Clock
11	HDMI_DET	Input Detect
12	DCLK-	Clock
13	NC	No Connection
14	NC	No Connection
15	HDMI_SCL	DDC Clock
16	HDMI_SCL	DDC data
17	GND	GROUND
18	HDMI5V	5V POWER
19	HDMI_HPD	HPD Detect

3.3 CN2- VGA interface

Pin No.	Symbol	Function Description
1	RED	Red color signal
2	GREEN	Green color signal
3	BLUE	Blue color signal
4	NC	No Connection
5	VGA_DET	VGA Detect
6	GND	GROUND
7	GND	GROUND
8	GND	GROUND
9	VGA_5V	VGA 5V
10	GND	GROUND
11	NC	No Connection
12	DDC_SDA	DDC Data
13	HSYNC	Horizontal Sync
14	VSYNC	Vertical Sync
15	DDC_SCL	DDC Clock

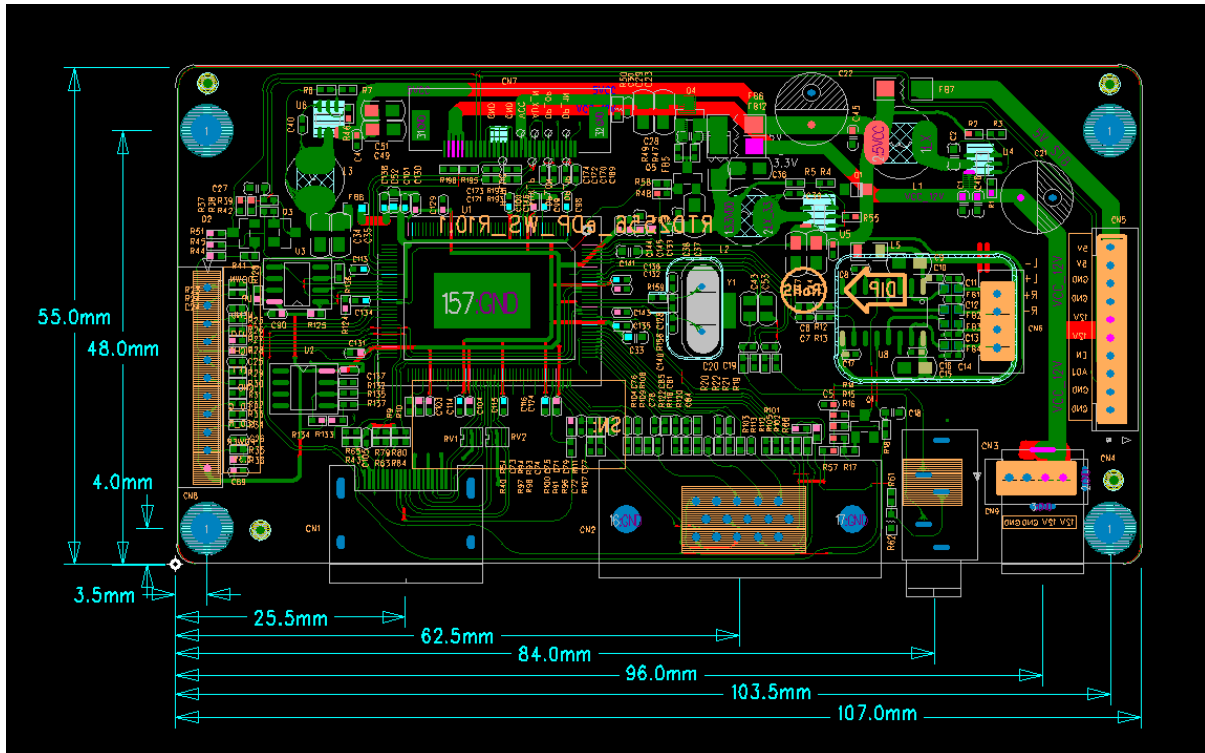
3.4 CN8-Keypad

Pin No.	Symbol	Function Description
1	DOWN	DOWN
2	UP	UP
3	MENU	MENU
4	AUTO	AUTO
5	RIGHT	RIGHT
6	LEFT	LEFT
7	GND	GROUND
8	LED-G	Green LED
9	LED-R	Red LED
10	POWER3.3V	Power

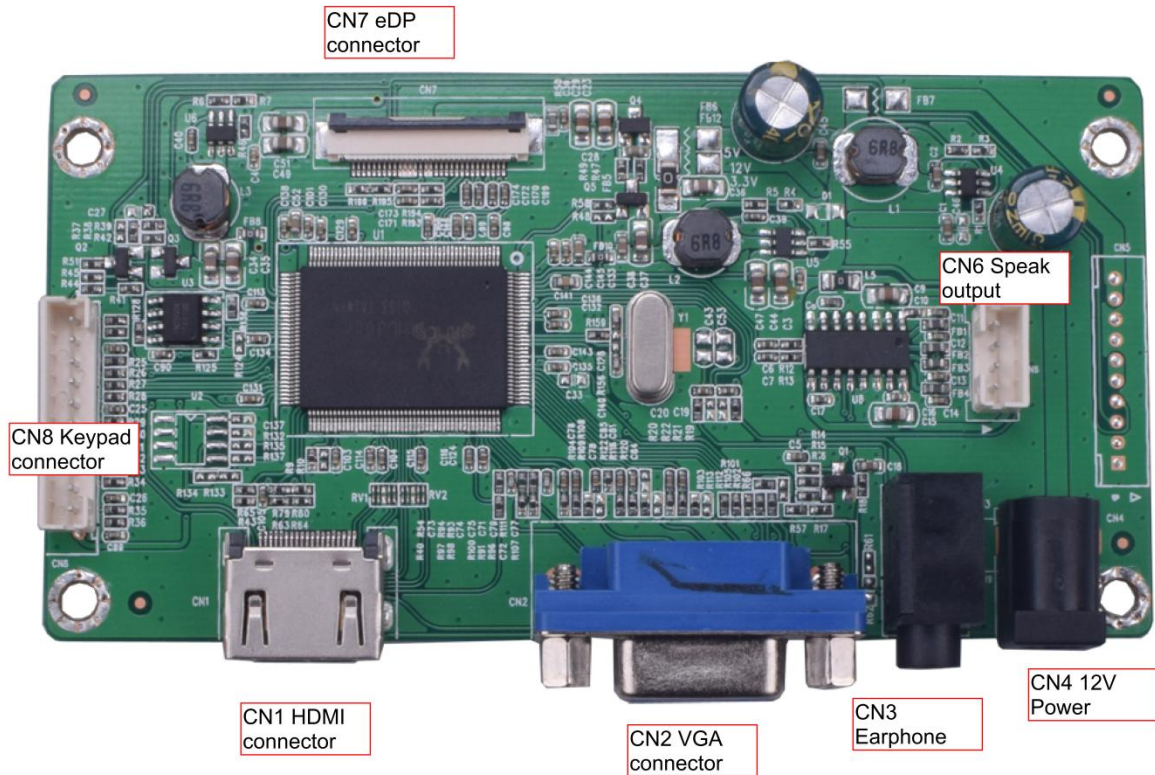
3.5 CN6-Speaker output pin

Pin No.	Symbol	Function Description
1	L-	Left sound channel negative
2	L+	Left sound channel positive
3	R-	Right sound channel negative
4	R+	Right sound channel positive

4 Mechanical Drawing



5 Connector instruction



6 Electric Characteristics

Item	Symbol	Min	Typ	Max	Unit	Note
Power input			12			DC
eDP display panel Voltage			3.3			5V/12V option
Horizontal Sync		31.5		94.038	KHz	
Field Sync		60		75	Hz	
Consumption				0.3	W	

7 VGA Mode table

No.	Mode	resolution	Horizontal Freq	Field Freq
1	WUXGA	1920*1200	74.556	60
2	WUXGA	1920*1080	67.5	60
3	UXGA	1680*1050	59.8	60
4	WXGA+	1440*900	55.5	60
5	SXGA	1280*1024	63.5/80	60/75
6	XGA	1024*768	48.4/56.5/60	60/70/75
7	SVGA	800*600	37.9/47.2/46.9	60/72/75
8	VGA	640*480	31.5/37.9/37.5	60/72/75
9	DOS	720*400	31.5	70

8 Warranty and Conditions

<http://www.displaymodule.com/pages/faq>