

SPH505

Family	Professional dishwasher
Subfamily	Hoodtype dishwasher
Basket dimensions	500x500 mm
Panel	Ecoline
Filter	5-stages filter system
Rinse pump H.T.R. system	Yes
Dual heating	Yes
Usable load height	470 mm
Power connection	400 V 3N~ / 16 A / 9,7 kW / 50 Hz
Maximum height with open hood	2132 mm
Product dimensions WxDxH	634x750x1518 mm



Target

Solutions	Coffee shops/Wine bars; Hotels; Restaurants/Pubs; Food retail; Catering and Institutions; QSR
-----------	--

Aesthetics

Series	Ecoline	Led color	Red
Control panel	electronic		

Functions



Functionality	GN 1/1 trays washing; 5-stage filter; HTR; Door clearance 470mm
---------------	---

Programs

Programs	3 automatic programs; Self-cleaning programs
Program options	Extra rinse; Clean water cycle
Program specifications	Boiler 85°C/Tank 60°C - 1'30"; Boiler 85°C/Tank 60°C - 2'30"; Boiler 85°C/Tank 60°C - 4'
Drain and self cleaning cycle	Yes
Maximum basket/hour	40
Maximum dishes/hour	720

Interface

Display	4 digit	Cycle progress alert	Yes
Number of buttons	5	End-cycle alert	Yes
On/Off button	Yes	Manual diagnostic	Yes

Construction

Tank Construction	Deep drawn Partial double wall	Hood construction	Single wall
Tank material	Stainless steel AISI 304	Tank capacity	14 l
Back panel	Prepainted	Boiler capacity	10 l
Tank filter	Stainless steel	Protection class	IPX4
Washing spray arm	2 in stainless steel	Adjustable feet	Yes
Rinse spray arm	2 in stainless steel	Net weight	118.000 kg
		Drain max. height	1000 mm

Technical Features

Tank heating element	2200 W	Warm water connection	8°C
Boiler heating element	9000 W	Max temperature inlet water	60°C
Washing pump	700 W	Max water hardness	12°F - 7°dH
Default connection	9700 W	Inlet pressure	100-1000 kPa
Water cycle consumption	3,2 l		

Electrical Connection

Optional electrical connection	230 V 3~ / 28 A / 9,7 kW / 50 Hz; 230 V~ / 16 A / 3,7 kW / 50 Hz (NC); 230 V~ / 29 A / 6,7 kW / 50 Hz
--------------------------------	---

Equipments

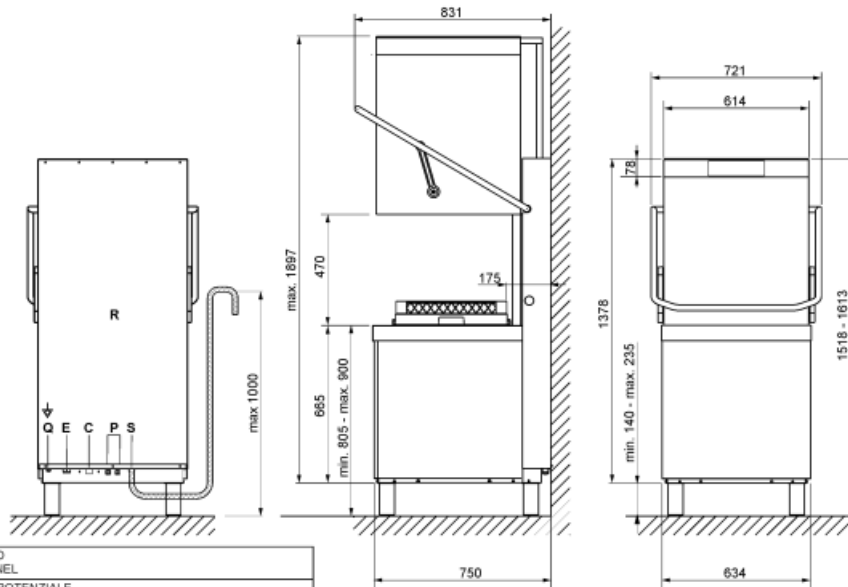
Drain pump	Yes	Rinse load	0,4 l/h
Peristaltic detergent doser	Electronic control	Cycle counter	Yes
Peristaltic rinse-aid doser	Electronic control	Break tank	Yes
Default chemicals dosing unit of measure	gr/l	Partial renewal of water in the tank and built-in drain pump	Yes
Thermostop system	Yes	Trays washing option GN1/1 530x325mm	Yes
Soft Start system	Yes	Water supply pipe diameter	DN15 - ½"
Stand-by system	Yes	Drain supply pipe diameter	DN20-G ¾"
Automatic start	Yes, default OFF		
Detergent load	1,5 l/h		

Detergent (red) hose length	2,2m
Rinse aid (blue) hose length	2,2m

Accessories Included

Dish basket	1x PB50D01
Cutlery basket	1x PHOOS02
Flat basket	1x PB50G02

Water supply hose	Yes - 2m
Drain hose	Yes - 2m



R	PANNELLO RETRO LOWER BACK PANEL
Q	MORSETTO EQUIPOTENZIALE EARTH TERMINAL
P	TUBI POMPE PERISTALTICHE PERISTALTIC HOSES
E	CAVO ALIMENTAZIONE ELETTRICA ELECTRICITY SUPPLY CABLE
S	TUBO DI SCARICO DRAIN HOSE
T	ENTRATA CAVO DI ALIMENTAZIONE DOSATORE ESTERNO EXTERNAL DISPENSER POWER CABLE ENTRY POINT
C	TUBO DI CARICO FILLER HOSE

Not included accessories



WT5700SR

Entry table right side with sink, backsplash (100mm), lower shelf, 700x720x821,5 mm



WT51200SR

Entry table right side with sink, backsplash (100mm), lower shelf, 1200x720x821,5 mm



PHOOS03

8 compartments polypropylene basket for cutlery suggested for Hood Type



WT51200SHL

Entry table left side with sink and scraping hole, backsplash (100mm), lower shelf, 1200x720x821,5



PHOOS01

Polypropylene single basket for cutlery



WB50T02

Wire basket for 7 trays GN1/1 h 20 mm, 500x500 mm



WT51200SHR

Entry table right side with sink and scraping hole, backsplash (100mm), lower shelf, 1200x720x821,5 mm



WTX51200

Exit table for both sides, with lower shelf, 1200x560x821,5 mm



WT5700SL

Entry table left side with sink, backsplash (100mm), lower shelf, 700x720x821,5 mm



WH00S01

Wire insert for 12 small dishes



WTX5700R

Exit table right side, with back splash (100mm) and lower shelf, 700x720x821,5 mm



WTX51200L

Exit table left side, with backsplash (100mm), with lower shelf, 1200x720x821,5 mm



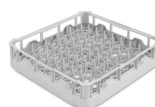
WB50G01

Universal wire basket with flat bottom, 500x500x123 mm



WT51200SL

Entry table left side with sink, backsplash (100mm), lower shelf, 1200x720x821,5 mm



PB50D01

Polypropylene basket for 18 plates, 500x500x105 mm

**WB50G02**

Wire basket for 90 mm diameter max glasses with sloped bottom, 500x500x170 mm

**PB50G01**

Universal polypropylene basket, 500x500x100 mm

**WTX5700**

Exit table for both sides, with lower shelf, 700x560x821,5 mm

**WB50D01**

Wire basket for 18 dishes 250 mm max. diameter or self service trays, 500X500 mm

**WTX5700L**

Exit table left side, with back splash (100mm) and lower shelf, 700x720x821,5 mm

**WTX51200R**

Exit table right side, with back splash (100mm), with lower shelf, 1200x720x821,5 mm

**WB50G04**

Wire basket for glasses 135 mm diameter max, with sloped bottom, 500x500x170 mm

**PHOOS02**

6 compartments polypropylene basket for cutlery

**WB50G03**

Wire basket for 72 mm diameter glasses with inclined bottom, 500x500x235 mm

Symbols glossary (TT)



SUITABLE FOR GASTRONORM TRAY



HTR RINSING SYSTEM



5 STAGE FILTER



MAX. USABLE HEIGHT 470mm