

No tools required.

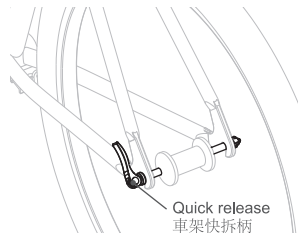
**Parts**

- a | Stand coupling
- b | Coupling bolt
- c | Stand upper leg
- d | Spacers x 2
- e | Stand lower leg

Max. Load 15 kg. (最大載重15 kg)

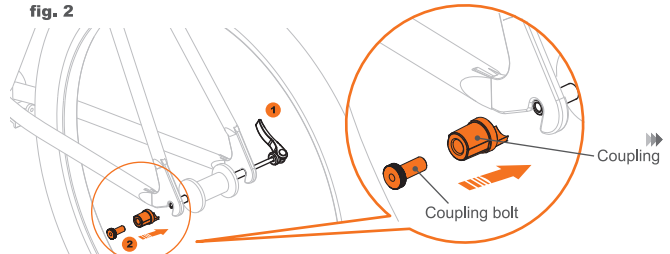
**Warning** 1. Always ensure rear quick release is closed/locked and secure before riding bike. 2. Quick release must be closed/locked facing upwards. **警告** (繁體中文) 1、車架快拆柄請務必鎖緊，且一定要鎖到底。2、車架快拆柄一定要鎖在安全位置，請參看圖fig3。 **警告** (簡體中文) 1、車架快拆柄請務必鎖緊，且一定要鎖到底。2、車架快拆柄一定要鎖在安全位置，請參看圖fig3。

fig. 1



From rear wheel, undo and remove quick release (fig. 1).

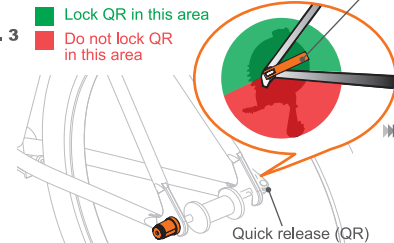
fig. 2



From right side of bike, insert quick release skewer (lever on right side). On left side of bike, attach supplied stand coupling. 'Lip' of coupling should be on underside—it fits into the opening of forkend (dropout) (fig. 2).

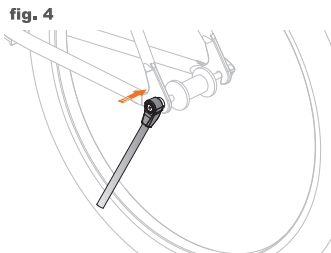
- Lock QR in this area
- Do not lock QR in this area

fig. 3



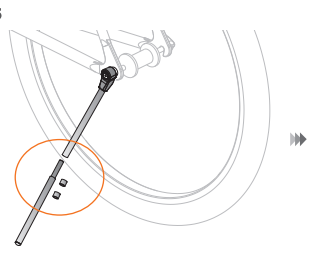
When seated correctly, insert coupling bolt and screw in. Tighten bolt while closing quick release lever, making adjustments as necessary until the wheel is secured tightly (fig. 3). Quick release must be closed/locked facing upwards.

fig. 4



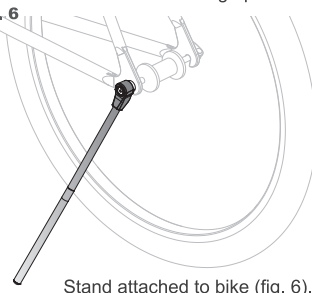
Attach stand upper leg to nut-leg should be completely vertical (fig. 4).

fig. 5



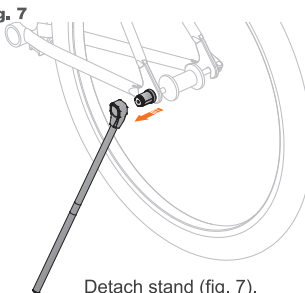
Insert lower leg into upper section of leg. If bike is unstable, you may need to add one of the supplied spacers to extend length of stand (fig. 5).

fig. 6



Stand attached to bike (fig. 6).

fig. 7



Detach stand (fig. 7).

fig. 8



Take stand apart. Carry in jersey pocket or bag (fig. 8).

## Limited Warranty

Ibera warrants this product for normal usage against workmanship, and material defects to the original purchaser for two year from purchase date. Products purchased online are not covered by this warranty unless purchased from an authorised Ibera online store. 1. User assumes all risk of personal injury, damage to or failure of the product when it is used in jumping, acrobatics or similar activities. 2. Warranty does not cover any incidental or consequential damages, such as personal injury or other losses due to accident, neglect, misuse, abuse, modification, normal wear and tear, improper care and cleaning, or failure to follow included instructions.

See other Ibera products at [www.ibera.info](http://www.ibera.info)

**Ibera Co. Ltd.**

Specifications subject to change without notice. Ibera is a trademark of Ibera Co. Ltd. All other trademarks are property of their respective owners. Copyright 2017 Ibera Co. Ltd. Made in Taiwan. Artwork: 1–2017. IB-ST6