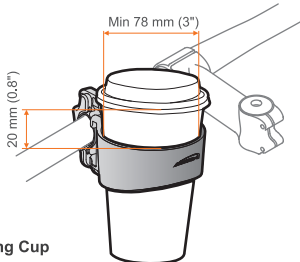


Tools required: 3 mm Allen key.

Clamp Parts

- a Nut
- b Adjustable clamp arm
- c Sizing pad
- d Sizing pin
- e Mount
- f 3 mm Allen bolt

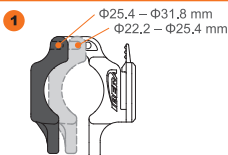


Using Cup

Width of cup used should be at least 78 mm (3 inch) diameter when measured 20 mm (0,8) from top of cup. For safety, when mounted in holder, cup should sit no less than 25 mm (1") above the top of holder.

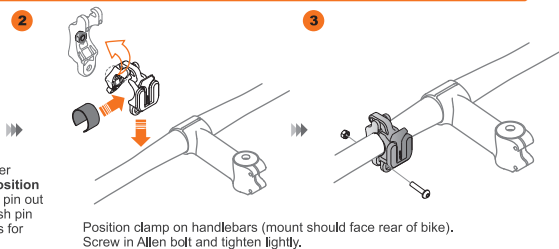
Warning 1. Use only tapered cups (wider at top than bottom). **2.** Do not use disposable cups. **3.** Do not use for off-road, or rough road riding. **4.** Appropriate care should be taken with hot drinks. **5.** Ensure cup lid is secure before using. **警告(繁體中文)** 1、本產品需杯身有斜度的茶杯、飲料杯或水壺才可使用。本產品上緣內徑80mm(放置的杯子上緣至少要比這個規格大才能放)；下緣內徑75mm。2、本產品不建議使用一次性的紙杯。3、本產品不適合越野騎行使用。4、騎行前請保證茶杯、飲料杯或水壺的杯蓋有確實蓋緊。5、如放置熱的飲料時，請注意因車輛顛簸導致熱飲潑灑的情況，避免造成燙傷意外。**警告(簡體中文)** 1、本產品需杯身有斜度的茶杯、飲料杯或水壺才可使用。本產品上緣內徑80mm(放置的杯子上緣至少要比這個規格大才能放)；下緣內徑75mm。2、本產品不建議使用一次性的紙杯。3、本產品不適合越野騎行使用。4、騎行前請保證茶杯、飲料杯或水壺的杯蓋有確實蓋緊。5、如放置熱的飲料時，請注意因車輛顛簸導致熱飲潑灑的情況，避免造成燙傷意外。

Adjust Clamp Size



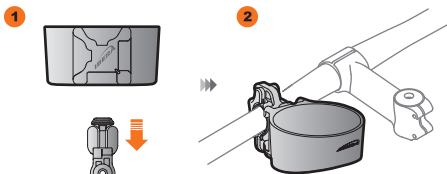
Clamp has two sets of pin holes for smaller or larger diameter handlebars. **Default position suits most bars** – to change setting, pull pin out with pliers, or push out with Allen key. Push pin into lower holes. Use supplied sizing pads for further adjustment if necessary.

Install Clamp



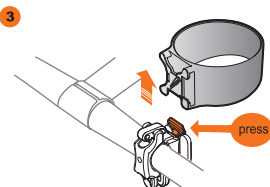
Position clamp on handlebars (mount should face rear of bike). Screw in Allen bolt and tighten lightly.

Attach Cup Holder



Align recess on rear of cup holder with clamp mount. Slide on until cup holder locks in place. When cup holder is attached correctly, there should be a distinctive 'click' sound.

Detach Cup Holder



To detach, press release button in while sliding off cup holder.

Limited Warranty

Ibera warrants this product for normal usage against workmanship, and material defects to the original purchaser for two year from purchase date. Products purchased online are not covered by this warranty unless purchased from an authorised Ibera online store. 1. User assumes all risk of personal injury, damage to or failure of the product when it is used in jumping, acrobatics or similar activities. 2. Warranty does not cover any incidental or consequential damages, such as personal injury or other losses due to accident, neglect, misuse, abuse, modification, normal wear and tear, improper care and cleaning, or failure to follow included instructions.

See other Ibera products at www.ibera.info

Ibera Co. Ltd.
Specifications subject to change without notice. Ibera is a trademark of Ibera Co. Ltd. All other trademarks are property of their respective owners. Copyright 2016 Ibera Co. Made in Taiwan. Ltd. Artwork: 5-2016.