

NOTICE

IBERA

Ibera Adjustable Phone Holder (Model: IB-PB26)

This holder can carry a range of phones, but your phone must conform to the holder's size limits, and you must use the holder correctly.

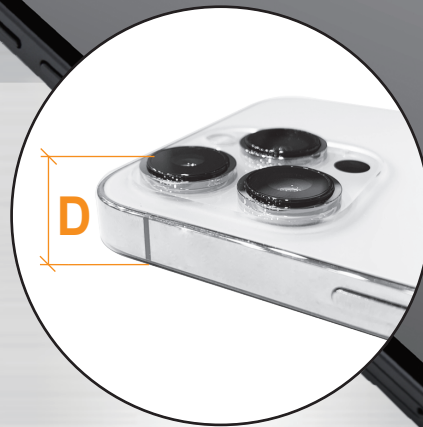
Phone Size (Min. – Max.)

H: 140 mm – 165 mm (5.6" – 6.5")

W: 70 mm – 80 mm (2.75" – 3.15")

D: 7 mm – 9.7 mm (0.28" – 0.38")

–including any protruding lenses.



Adjustable Phone Holder

Holds a range of phones.

- Access touch-pad controls on the fly
- Portrait or landscape mode
- Adjustable size
- Holds phone securely



Portrait +
landscape



Phone case mounted on stem (Q5 StemClamp)



Phone case & Minibar mounted on handlebars (Q6 BarClamp)

Mounting Options

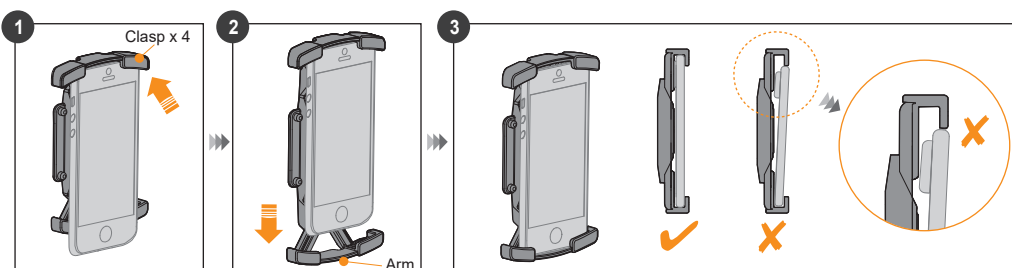
Q5 StemClamp, attaches to stem.

Q6 BarClamp, attaches to handlebars. With Minibar: carry phone & other accessories (headlight, bike computer, bell etc. – not supplied).

Read instructions before use. There may be updated or additional information on our website.

Using Case Instructions

1. Remove phone case. Fit the top of phone (lens end up, facing forward) in upper holder clasps.
2. Holding phone firmly with one hand, pull lower spring-loaded arm downward to fit phone into lower holder clasps.
3. Release lower arm to close and secure phone in holder. Ensure phone is inserted firmly inside all 4 clasps of the holder.



Warning

Remove any protective case/cover before placing phone in Ibera phone holder. Before each ride, ensure phone is inserted firmly inside all 4 clasps of holder. Do not use holder if your phone does not fit firmly.