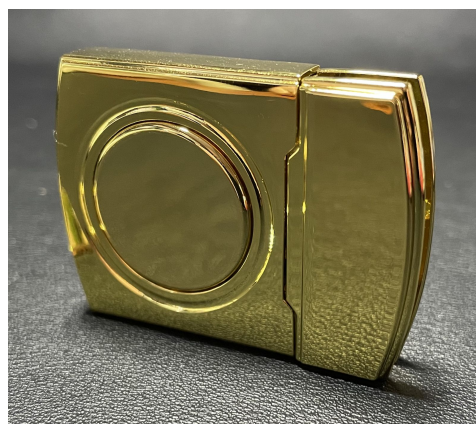


**[PLEASE READ FULLY!]**

# Buckle Installation Instructions

Thank you for your acquisition, fellow geek!  
**Please read these instructions fully**, as failure to do so could cause usage issues for an improperly installed buckle. *Note: Buckle is for decorative adornment use only.*



- **Page 1 (this page):** Tools and Component List
- **Page 2:** "Before You Begin" / Prep Page
- **Page 3-4:** Receptacle ("Female") Buckle Installation
- **Page 5-6:** Release button ("Male") buckle Installation
- **Page 7-8:** Part Appendix

## Tools and Equipment:

- **Safety glasses**
- A small Phillips-head screwdriver (jewelers size preferably)
- A regular hammer
- A rivet setting tool (a.k.a. punch)
  - a. Example: <http://bit.ly/swiscopunch>
- Workspace with a hard surface and cutting mat (preferred)
- Ruler and fabric pencil (for placement purposes on clothing or other fabric pieces)
- Small razor blade or fabric punch (for placement of the female buckle studs on fabric)
- A piece of foam (postcard size would work) or soft towel

## Each buckle set (consisting of 1 completed buckle) includes:

1. Receptacle "female" buckle component (1 pc.)
2. Release button "male" buckle component (1 pc.)
3. Back plate for receptacle buckle (1 pc.)
4. Tip screws (**3** pcs.)
5. Plastic sleeve (1 pc.)

Please email [oracle@sellgeek.com](mailto:oracle@sellgeek.com) with any inquiries. *Launch When Ready!*

**[PLEASE READ FULLY!]**

## **Buckle Installation Instructions**

### ***Before You Begin!***

For starters, you will need to figure out where you want the buckles installed, whether it be a belt, jacket, purse, or other item. This where the ruler and your fabric pencil (a type of chalk pencil used to temporarily mark fabrics during sewing) come into play.

After placing the components to where you want them, you'll want to mark down the locations for future reference as you work (don't worry, proper fabric pencils will wash out per their manufacturer's instructions). You may do so by either tracing them with the fabric pencil, or by using a piece of masking tape to mark where they should roughly fall. There are different ways to figure that out, and each person has their own way.

Once you've measured and positioned everything to your liking, you will need to mark puncture lines for the 3 posts in the back.

Once you've marked them, ensure final placement (check thrice, cut once) and then begin cutting small holes (or slits) using a precision cutting blade so that the posts penetrate the reverse side.

Admittedly, the receptacle "female" buckle component (Part 1 — see: Parts Appendix) is the hardest part of installation. **Have no fear— while it may seem daunting, it isn't difficult at all.** It just has a few more steps to it!



**[PLEASE READ FULLY!]**

# Buckle Installation Instructions

## Step 1: Receptacle "Female" Buckle Installation

Tools needed:

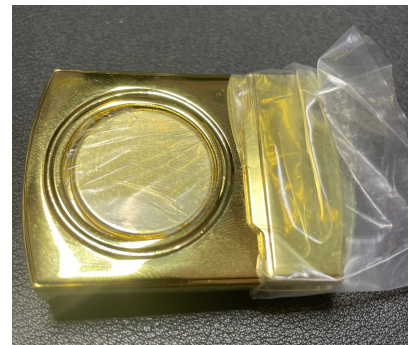
- Hammer
- Punch
- Plastic sleeve (from buckle, Part 5)

Physical installation will begin as follows.

1. Ensure that the **male part of the buckle (Part 2)** is prepped thusly:
  - a. To reduce scratching during installation, use the clear plastic **sleeve that the buckle** come in and stretch it over the male buckle, as per the picture (left).



2. Insert push button buckle part into **receptacle (Part 1)**. It is important that the buckle be fully inserted for proper installation of the receptacle to the garment (or other item).
3. Once done, place a piece of soft foam or a towel (such as a terry cloth), onto the cutting board or other hard surface **to use as a cushion**. Place buckle part 1—held by hand onto the place on the item you wish to install the receptacle—**face first upon the cushion**. You will need to do this to reduce any scuffing to **part 1** during its installation.



4. With the three posts poking through the reverse side, **place the backing plate (Part 3) shiny side up** so that the three posts slide through said backing plate. The side touching the face of the reverse side should have the small "dimple" points. (i.e. you shouldn't see it).



Page 3 of 8

Sell Geek, LLC | 1534 N. Moorpark Rd. #137, Thousand Oaks, CA 91360 U.S.A., Earth  
[oracle@sellgeek.com](mailto:oracle@sellgeek.com) (email) / [www.SellGeek.com](http://www.SellGeek.com) (online)

(v1.0 - January 2021) - Pictures, content, and other indicia are © Sell Geek, LLC. 2021. All rights reserved.

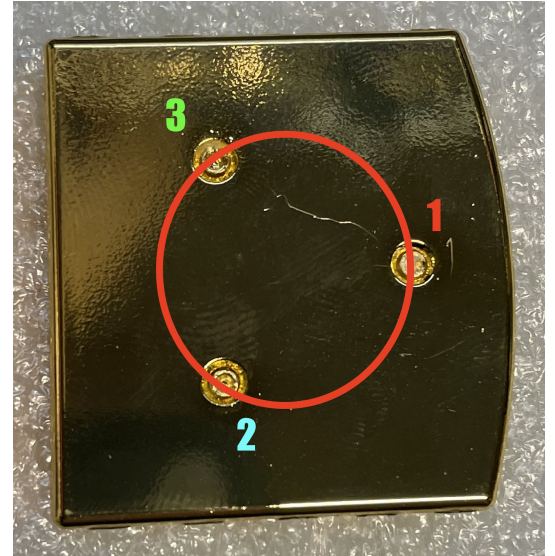
**[PLEASE READ FULLY!]**

## Buckle Installation Instructions

- Using a hammer and rivet punch, begin hammering each post **once** with the punch.

- IMPORTANT:** It is recommended that each post be tapped once, moving to the next post in a clockwise path over the posts (post 1, to post 2, to post 3, and repeat), tapping them evenly. (See picture to the right.)

*In other words, **do not hammer down one post repeatedly** until it is fully secured, leaving the other posts untapped. **Even hits** are needed in order to properly and evenly secure the back plate (part 3).*



- The post should "mushroom head" out as a rivet would, thus securing both part 1 and part 3 to the garment.
  - NOTE: The "mushroom head" effect may not be obvious, depending on the amount of material in the gap between the buckle and plate.
- Perform a quick "pull test" of the installation with your hand. placing one hand on part 1 and another hand's fingers on part 3. If you find that it is loose during this pull test, continue the even tapping of the posts until secure.
- Once completed, **remove** the covered push button "male" component from the receptacle
- Remove **Part 2** from the bag and re-insert it to test buckle's effectiveness. It should slide in and out (once you've pressed down on the button) without incident.
- Congratulations, you've made it past the hard part.



**[PLEASE READ FULLY!]**

# Buckle Installation Instructions

## Step 2: Push Button "Male" Buckle Installation



### OPTION A: Installation for Belts & Straps (of the 1 to 1 ¼ inch variety)

If you are installing on an one-inch (max. 1 ¼ inch wide) strap (like a belt or purse strap), you can run the strap through the two slots on the reverse side!

The **tip screws (Part 4)** will NOT be necessary in this case.

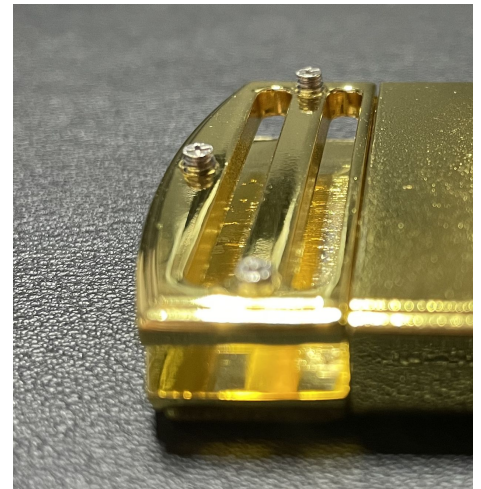
### OPTION B: Installation for Larger Belts, Straps and Other Garments.

This one is easier to install, and it will require the following tools:

- Jewelers' Phillips-head screwdriver
- Plastic sleeve (to reduce scuffing during installation)
- Tape or rubber band

It is best to prep the **push button buckle attachment (Part 2)** accordingly:

1. Using the **plastic sleeve (Part 5)**, sheathe Part 2 until to cover a majority of the buckle. Use tape or a rubber band to reduce shifting of the sleeve.
  - a. Keep in mind: You'll need to access the three (3) threaded screw holes at the end.
2. Start screwing down each tip screw, **but not all the way**—just enough so they don't fall out. (3 to 4 full turns should suffice, just to get it started. See *picture to the right*.)



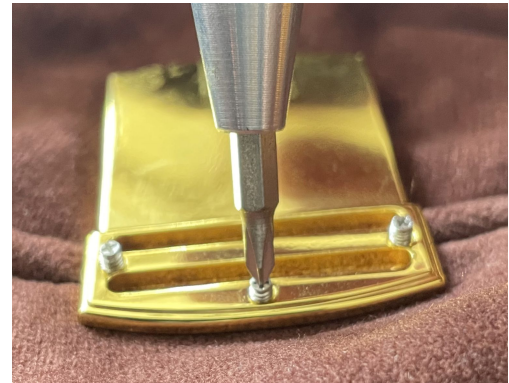
- a. Note: In some applications, this prep-step might not be feasible.

**[PLEASE READ FULLY!]**

# Buckle Installation Instructions

To install:

1. Place the open end over the edge you wish the buckle to attach to. (If you've marked it from earlier, that's the best bet.)
2. Once satisfied with the location, begin screwing down the tip screws. It is best to evenly distribute pressure over the three screws, accounting for any shifts or adjustments you may need to make. (You can always back the screw out later, but it's easier to take your time.)
3. Depending on the thickness of the material you're screwing into, the screw may recess/sink in the screw hole. That's to be expected.
  - a. In the unlikely event of ~~a water landing~~ the tip screw being recessed too far into the hole... you may want to add an interface layer.
4. Perform a pull test to ensure that the buckle is secure. Tighten screws as needed.
5. Perform a buckle test connecting both Part 1 and Part 2 together, to ensure they function as desired.
6. If so, you are done. Rinse and repeat for each buckle you have, as needed.



**Congratulations!**

Page **6** of **8**

Sell Geek, LLC | 1534 N. Moorpark Rd. #137, Thousand Oaks, CA 91360 U.S.A., Earth  
[oracle@sellgeek.com](mailto:oracle@sellgeek.com) (email) / [www.SellGeek.com](http://www.SellGeek.com) (online)

(v1.0 - January 2021) - Pictures, content, and other indicia are © Sell Geek, LLC. 2021. All rights reserved.



**[PLEASE READ FULLY!]**

# Buckle Installation Instructions

Parts Appendix - Visual Chart

Part 1: Receptacle Buckle ("Female") - 1 pc.

Front Side



Back Side



Part 2: Push Button Buckle ("Male") - 1 pc.

Front Side



Back Side



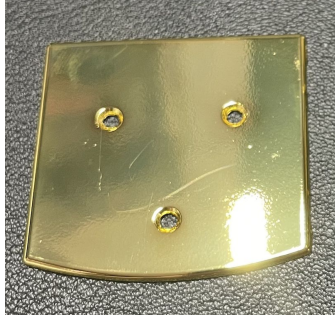


**[PLEASE READ FULLY!]**

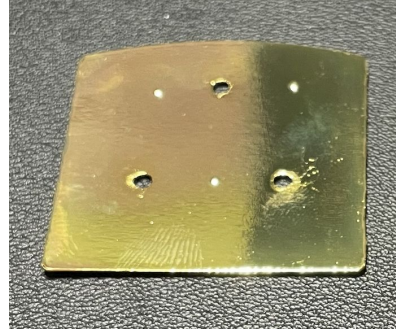
## Buckle Installation Instructions

Part 3: Backing Plate for Receptacle - 1 pc.

Front Side



Back Side

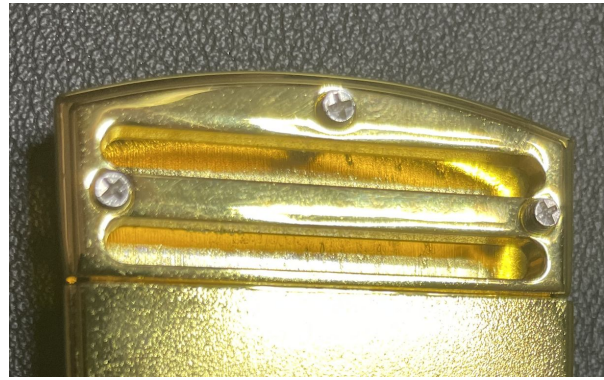


Part 4: Tip Screws - 3 pcs

Tip Screws



Screws on Part 2 (back side)



Part 5: Plastic Sleeve - 1 pc.

Plastic Sleeve



Buckle in the Sleeve

