

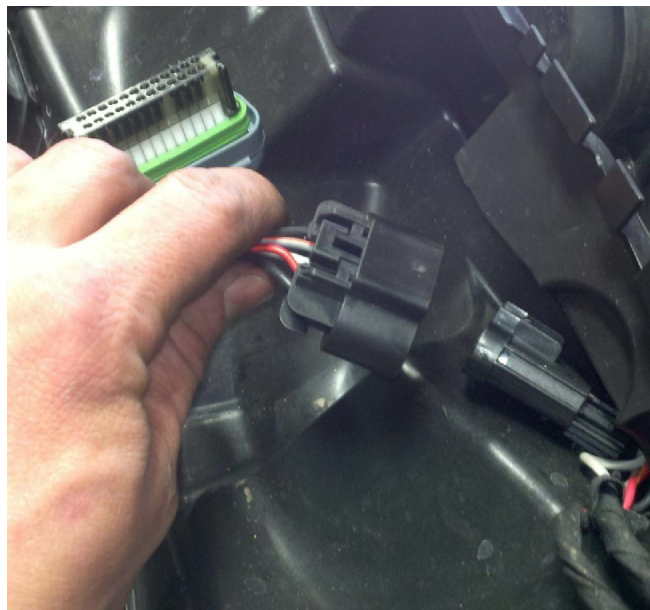
# The **MTNTK** BlowHole

Ski-Doo XM / XS '13-14  
Installation Instructions

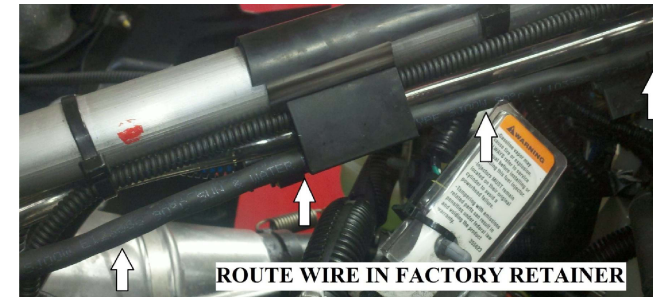
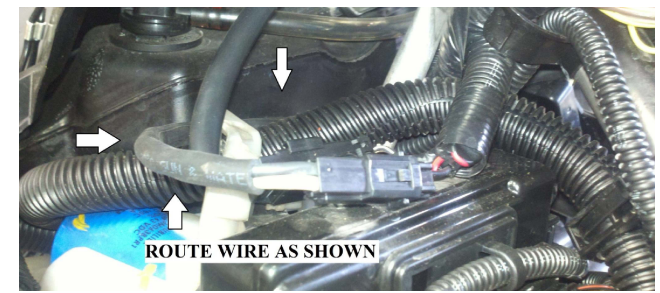


Disclaimer: Never attempt to adjust or run engine with fan on. Do not stick your fingers into the fan housing as it will cut or dismember. Mountain Tek Performance is not responsible for damages incurred by using this product or improper installation.

208.652.0122  
**MTNTKperformance.com**



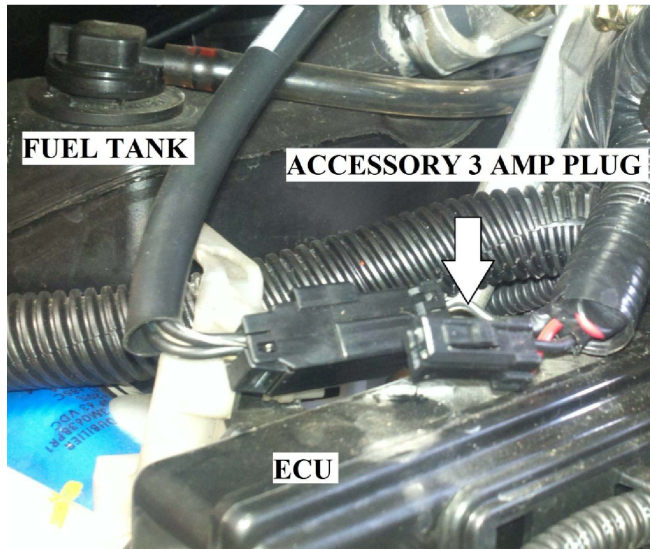
1.2. Remove 8 Torx head screws noting the placement of 4 longer screws. Raise up gauge console assembly and carefully disconnect harness from gauges and hood headlight harness. Lift off hood and place in safe location.



2.2. Continued pictures.



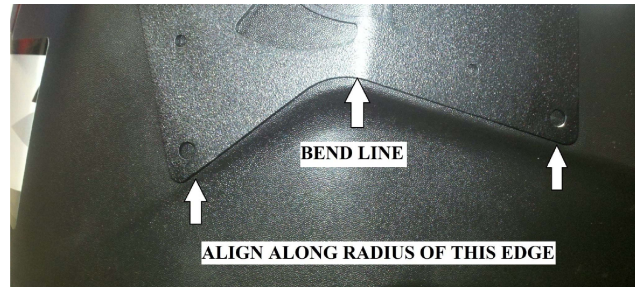
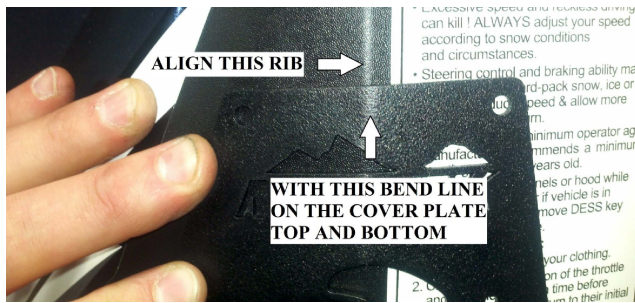
1. Remove side panels. Remove clutch cover. Remove windshield by pulling up on the three posts secures into the rubber grommets. Remove the hood by first disconnecting the air temp sensor. Disconnect the air intake tube by lifting the retainer tab and rotating the connection to release.



2. Locate accessory 3 amp plug located on the right side near the steering post above the ECU. Plug in the accessory connect harness and route as shown.  
Continued on next tile.



3. Place plastic wire tie approximately 1.25" from frame weld as shown.  
You can now replace the hood, gauge console, air temp sensor and the tube connector on the air intake.



4. Hold the face plate up to the side panel, aligning the edges at the bottom with the rib in the panel simultaneously aligning the center bend with the ridge in the panel as shown.



6. Using a silver pencil, scratch awl, or marker, mark the location of the center hole.



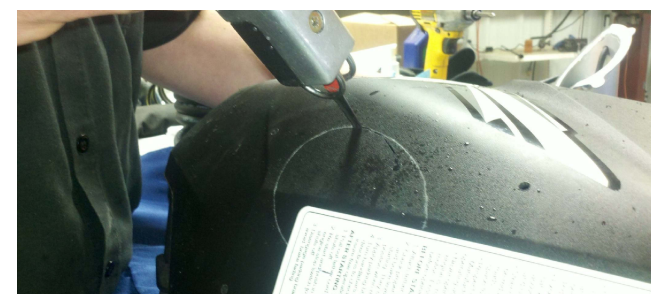
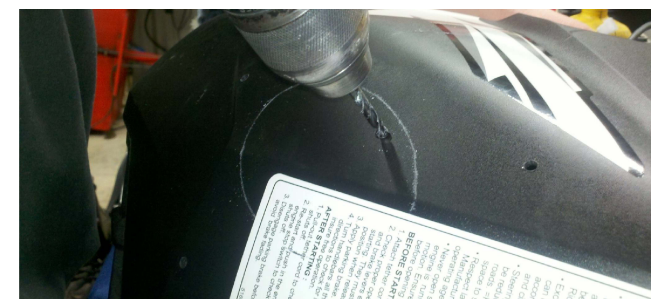
8. Cut the foam and remove one section.



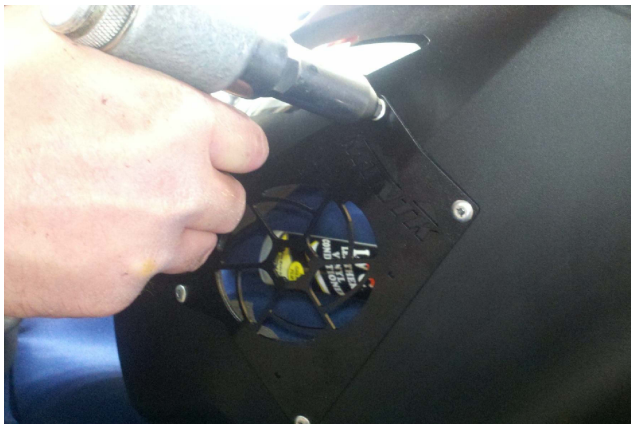
5. Drill (4) 3/6" holes in the outer (4) holes of the face plate through the panel. Start with one hole and place a rivet in the hole temporarily to hold it while moving to the next hole.



7. Remove face plate and fill in the unmarked spaces.



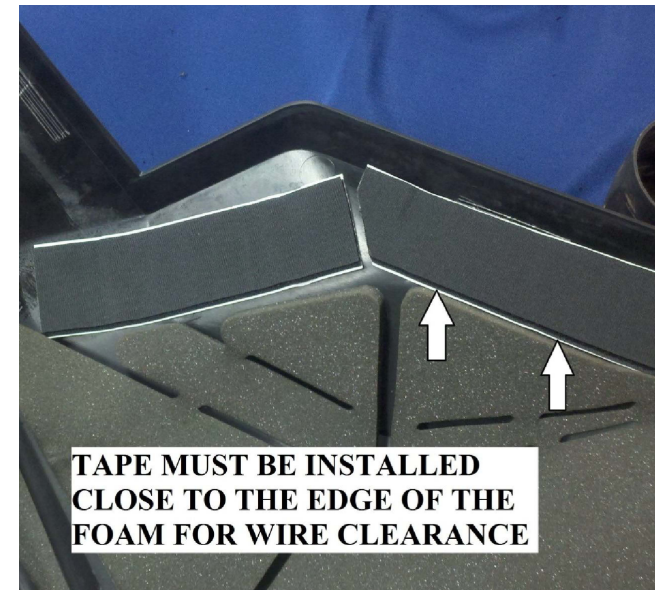
9. Drill a start hole and cut out the marked hole.



10. Clean up the hole using a rotary tool and or a de-burring tool. Read your warning sticker completely and commit to memory. Remove warning stickers and clean panel of glue residue. If you cannot remember what the warning sticker said then be responsible and order new warning decal to install on your sled because it will remind you not to be stupid. Rivet face plate onto side panel using the 3/16" expanding rivets.



12. Ensure rivets will go through the holes and if needed drill out to the proper size with the 1/8" or #30 bit.

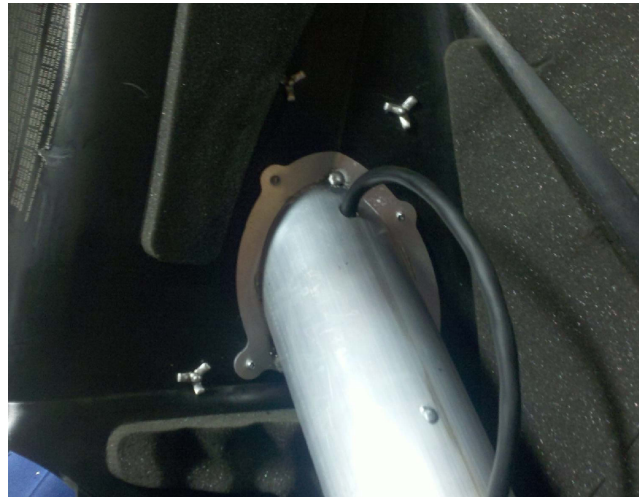


**TAPE MUST BE INSTALLED CLOSE TO THE EDGE OF THE FOAM FOR WIRE CLEARANCE**

14. Using the picture as a guide, cut the hook and loop tape so it will fit as shown.



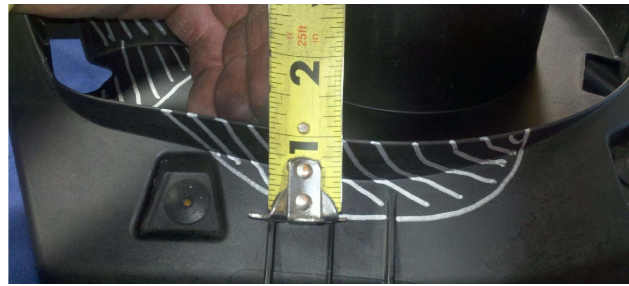
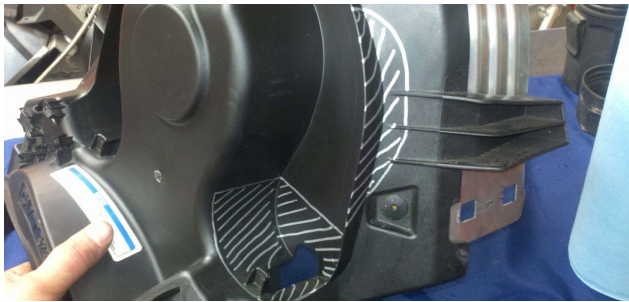
11. Using a 1/8" or #30 drill bit, drill through the side panel using the remaining 4 small holes as a guide.



13. Placing the fan motor assembly on the inside rivet the fan motor, side panel and faceplate together using the 1/8" rivets in (4) places. Push them all together to ensure a tight fit before pulling rivet. It should look like picture shown above.



15. Clean the area where the tape is about to be affixed thoroughly with the isopropyl alcohol. Clean it 2 or more times to ensure that the surface is clean. Let it dry completely, and then apply the tape. Make sure that the tape is close to the foam near the top edge to allow clearance for the wire when the panel is reinstalled. Route the wire inside the hook and loop as shown.



16. Remove spare belt from clutch cover and mark as shown. Take care to reference from the picture to ensure you know what to cut. Lined area is to be removed.

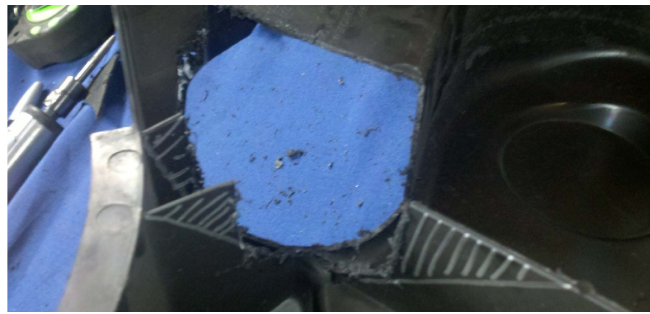
Pictures continued in next tile.



16.2 Continued pictures.



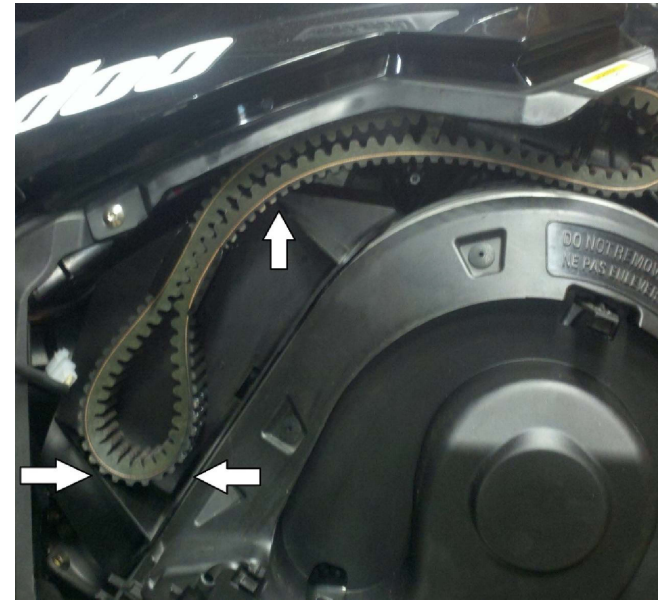
17. Using the saw remove the pieces carefully and deliberately. The plastic has a gummy consistency when cut and using a small amount of an aerosol lubricant will help. Hold the saw horizontal and cut through both faces of the cover at the same time. Remember you can always cut more off if it doesn't fit right!



18. You will also have to remove some of the reinforcing webbing from the underside of the cover.



19. Reinstall the clutch cover. Ensure the wires are placed as shown connected and the side panel is installed properly. Check the fit of the panel when closed. It should require a small amount of pressure to snap the cover over the upper side panel hook.



20. If you purchased the optional belt retaining clip then insert the belt into the clip and test the fit of the belt until it looks as shown in the picture. It should fit tight down at the bottom and clear the rib reinforcement.



21. Mark the location of the clip, remove belt, drill 3/16 holes and rivet on with expanding rivets.

22. Be sure to clean any shavings from the clutch area and check for proper fit of all components. With parking brake on start engine and ensure no abnormal noises or rubbing.

23. Clean a conspicuous spot with isopropyl alcohol and apply the MTNTK Performance decal to ensure your friends now know you are better than them. Start your sled, warm it up, remove parking brake and then go enjoy your BLOWHOLE!

**Kit Includes :**

4- 3/16" Aluminum Expanding Rivets

7- 3/16" Steel Rivets

1- Extension Harness

1- Blow Hole Motor Assembly

1- Fan Vent Face Plate

1- Clutch Cover Bracket