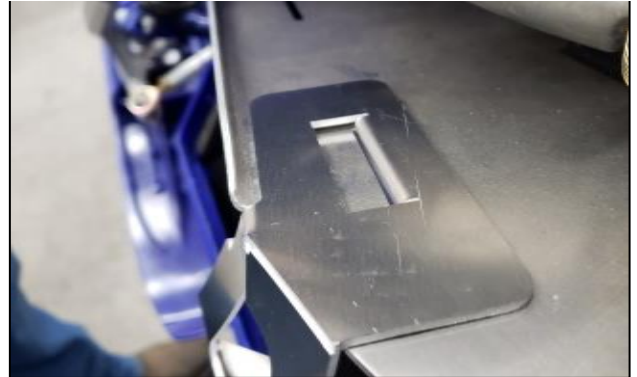




The MTNTK Performance Arctic Cat Ascender Blow Hole Installation Instructions



1. Remove the side panel from the clutch side of the snowmobile. Remove the front Torx Screw from the side panel support then Using a ¼" Drill Bit, drill out the side panel support as shown.



2. Slide the top end of the Blow Hole assembly into the top slot of the clutch cover as shown.



3. Slide the bottom locating pin of the Blow Hole assembly into the previously drilled ¼" hole located at the side panel plastic support bracket. With the Blow Hole Assembly installed, install the side panel back onto the Clutch Side of your snowmobile. Let your sled sit for at least 30 min.

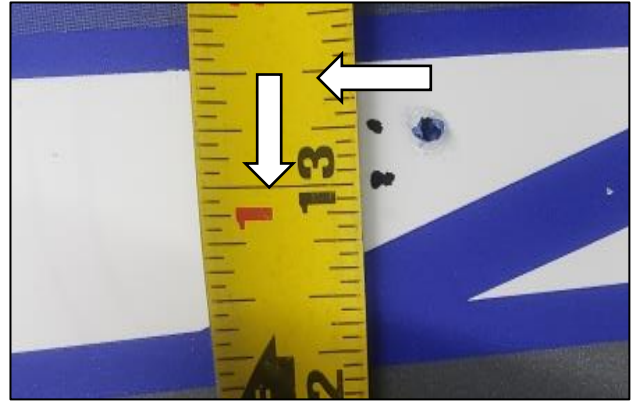


4. Remove the side panel. Your Blow Hole should have left an imprint in the side panel foam. Using a straight edge, quickly mark the center of your Blow Hole imprint onto the foam. This mark is to be used as a reference only!

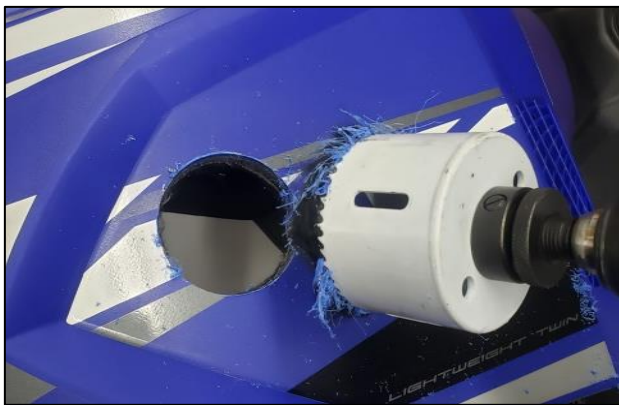
MTNTKperformance.com



5. Using an 1/8" Drill Bit, drill a hole using the previous marks as shown. This hole is to be used as a reference hole only!



6. On the outside of your panel, measure 1/4" forward and down from the previously drilled hole. Use a 1/8" Drill Bit to drill out this new pilot hole.



7. Using a 3" Hole Saw, drill out the location of your new pilot hole. Deburr and clean all the shavings from around the hole.



8. Align the Blow Hole Plate so the 3" hole is centered inside the plate's louvers. Once aligned, mark the 3/16" Holes surrounding the Plate.



9. Using a 3/16" Drill Bit, drill out these previously marked holes. Using a rivet gun, rivet the Blow Hole Plate to the outside of the side panel as shown.



10. Route the Blow Hole wiring harness up towards the steering post, down the side of the gas tank towards the oil bottle. Remove the stock accessory plug cap and plug it into the stock accessory plug.