

artos[®]

F802-3

INSTALLATION GUIDE

kascade wall mount tub filler

BRUSHED NICKEL(BN)



CHROME(CH)



F802-3

OPERATING SPECIFICATIONS

kascade wall mount tub filler



OPERATING PRESSURE

Minimum: 15 psi

Maximum: 75 psi

Above 90psi it may be necessary to install a pressure reducer

OPERATING TEMPERATURE

Maximum: 176°

FLOW RATE

9.7 USGPM

INLET/OUTLET

1/2" Female

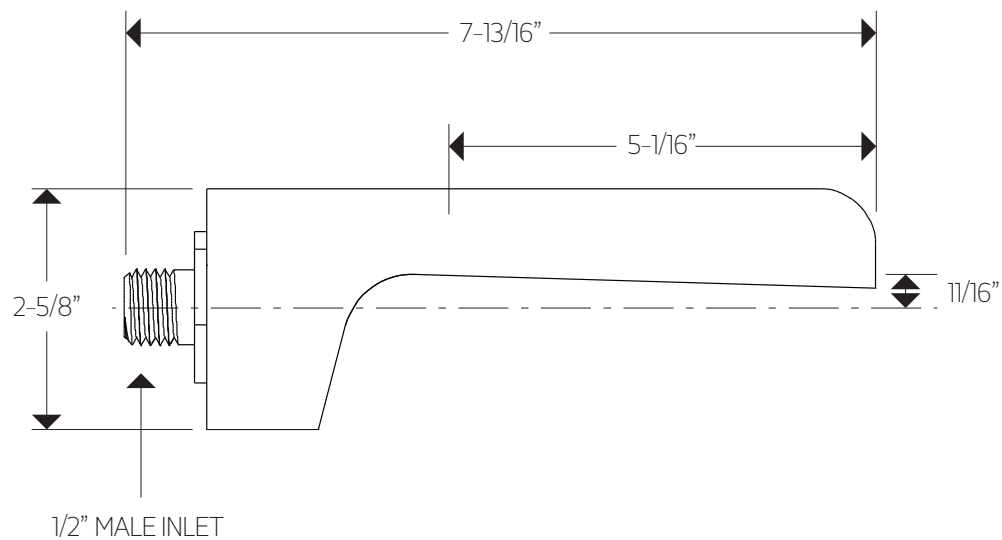
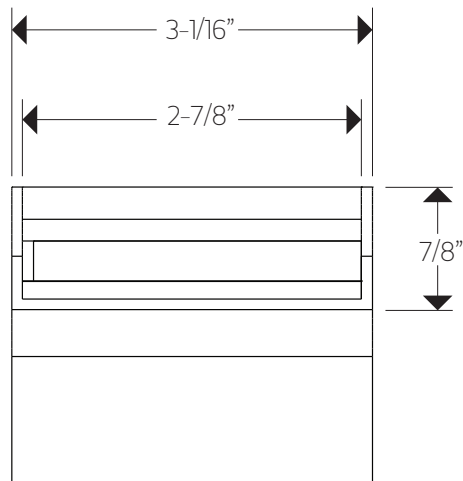
REQUIREMENTS

This unit requires a control

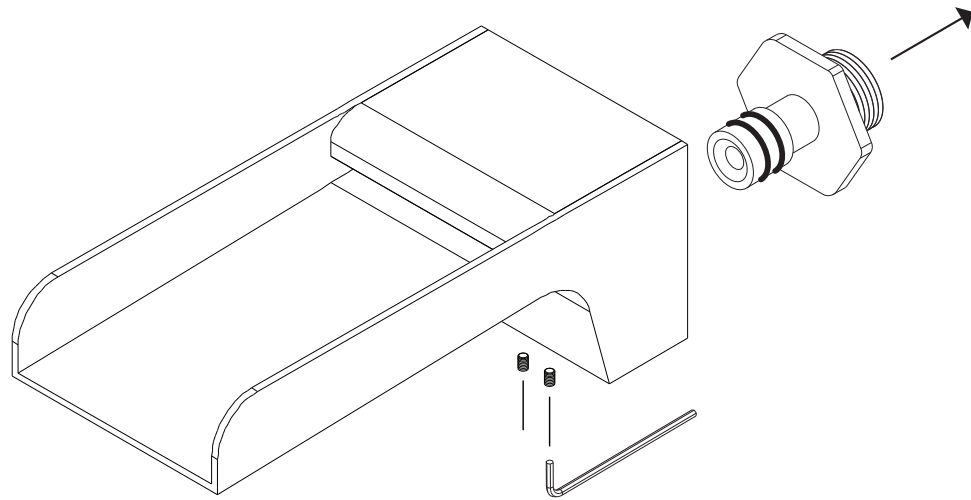
F802-3

PRODUCT DIMENSIONS

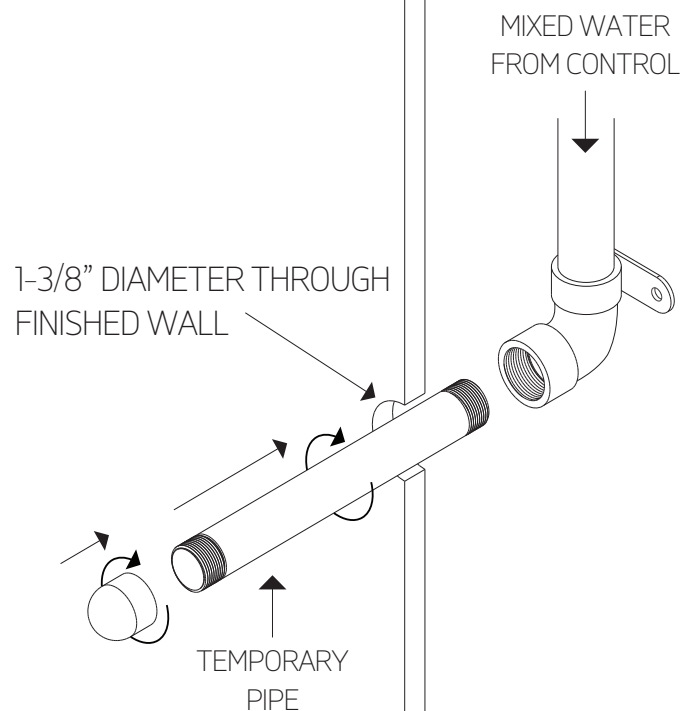
kascade wall mount tub filler



STEP 1



STEP 2

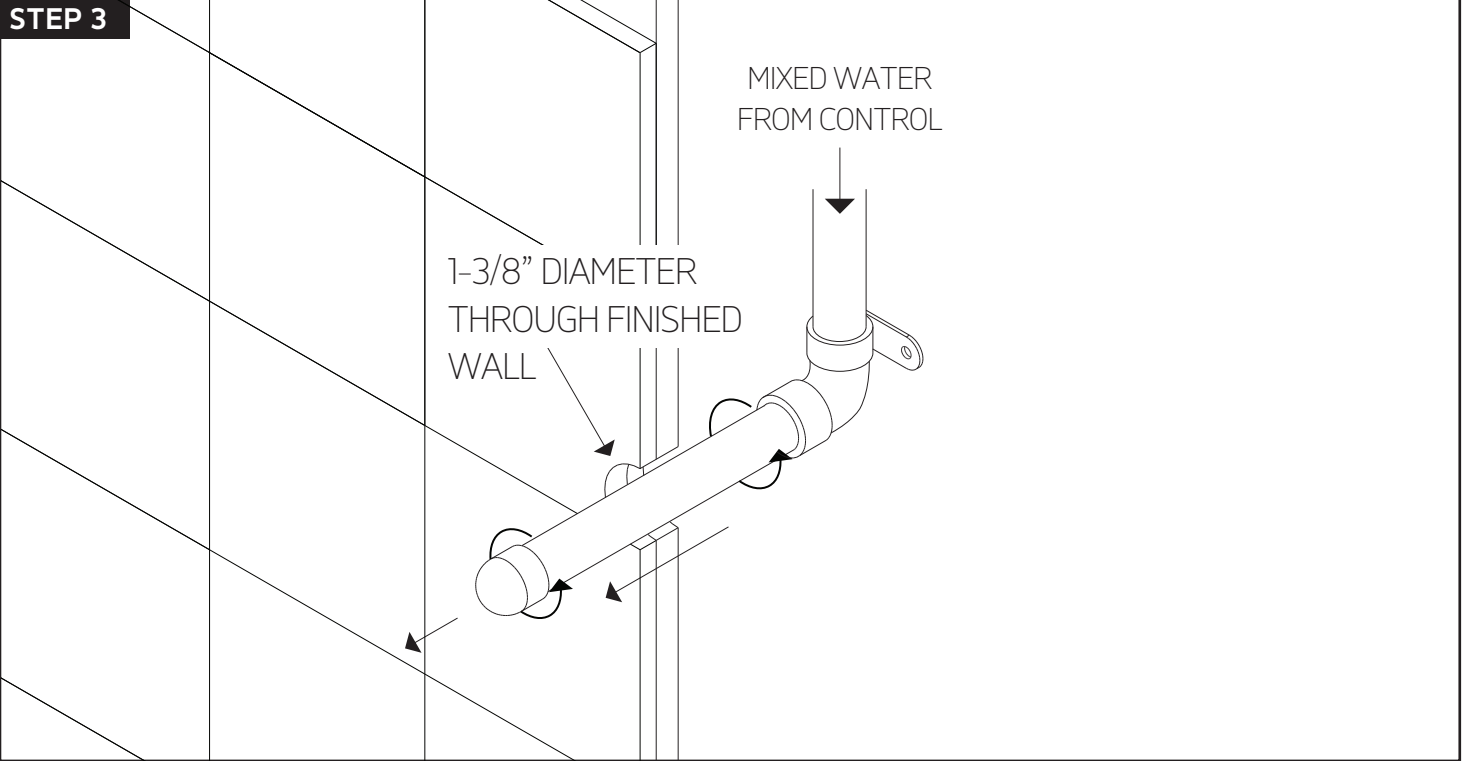


INSTALLATION STEPS

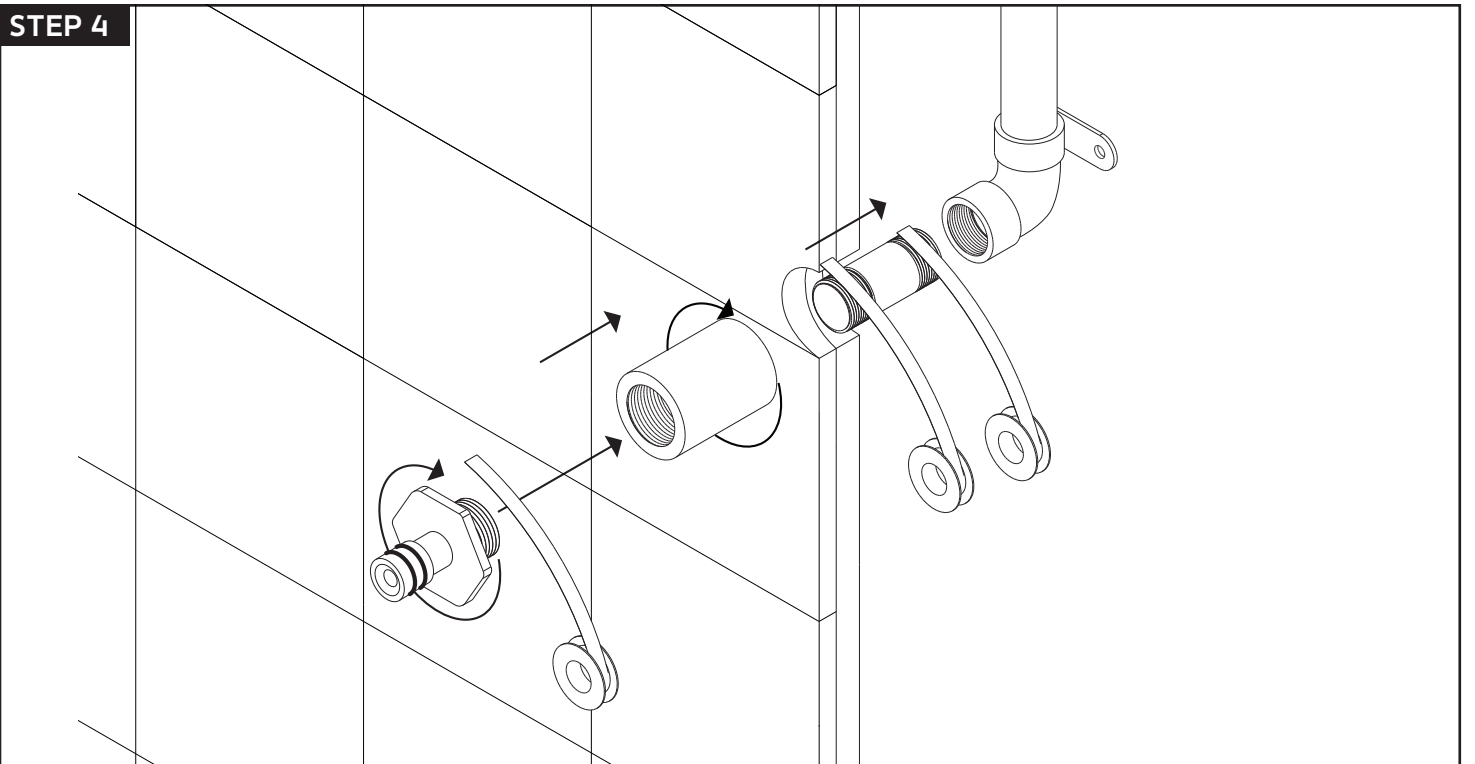
STEP 3

MIXED WATER
FROM CONTROL

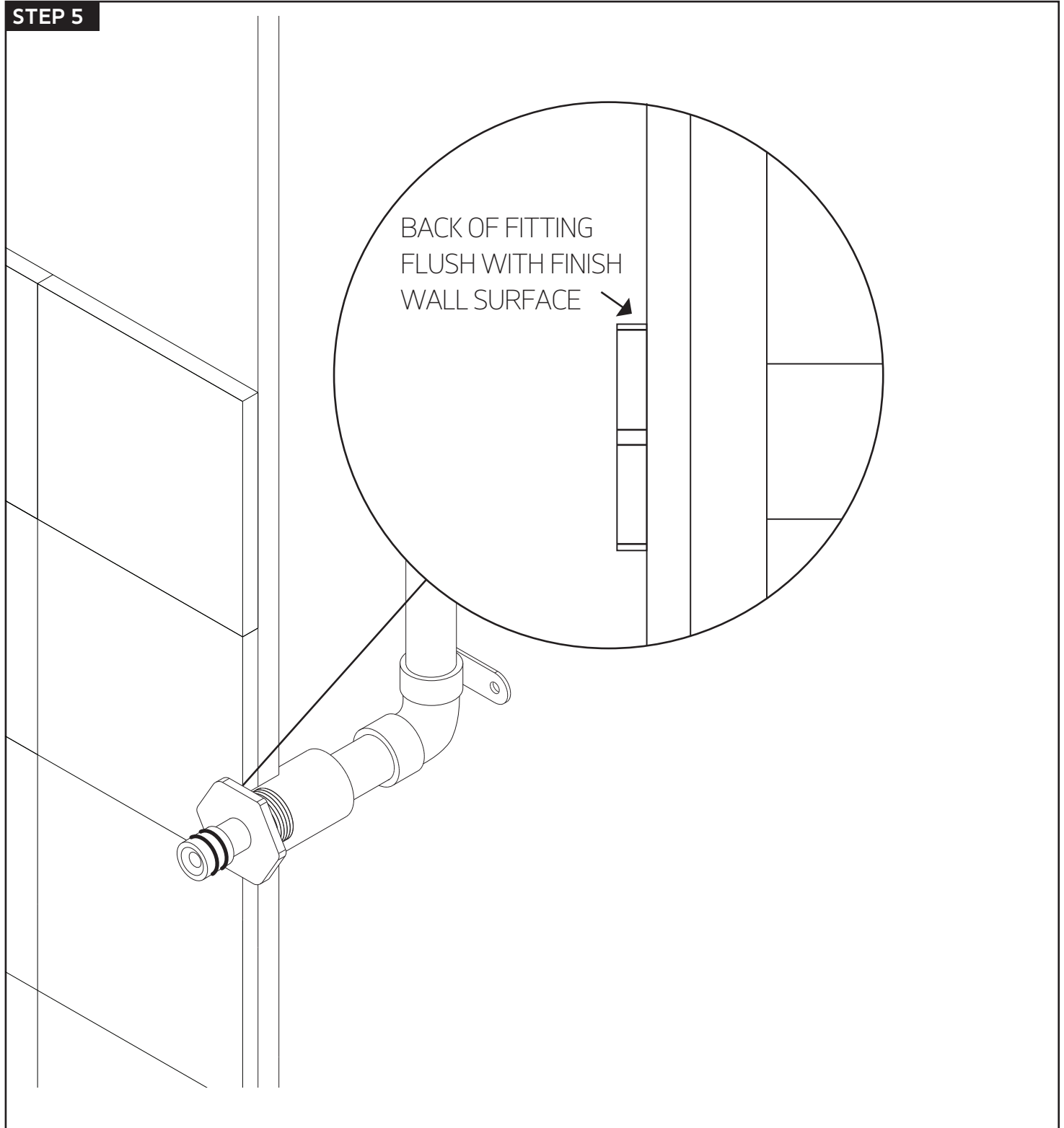
1-3/8" DIAMETER
THROUGH FINISHED
WALL



STEP 4

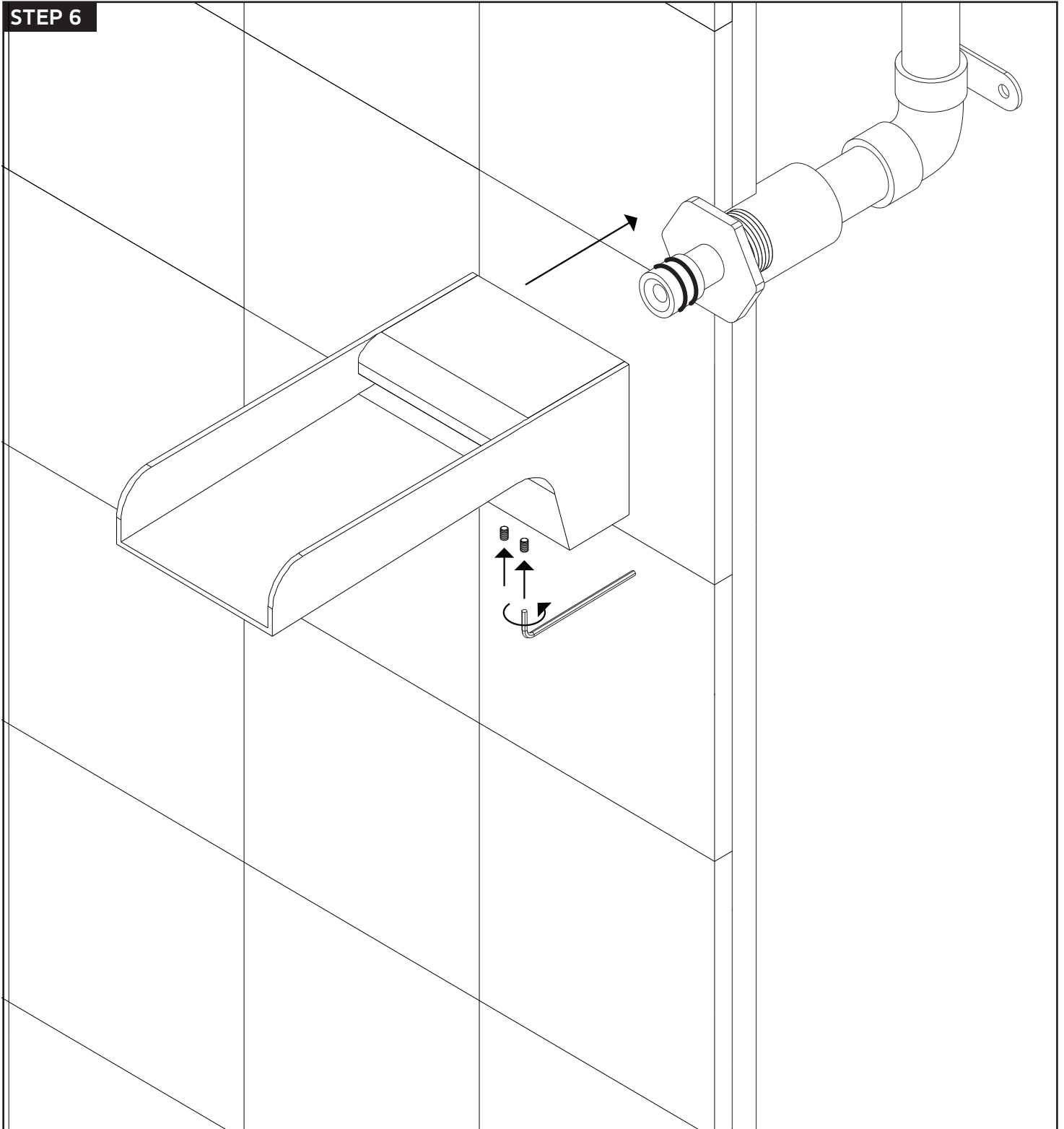


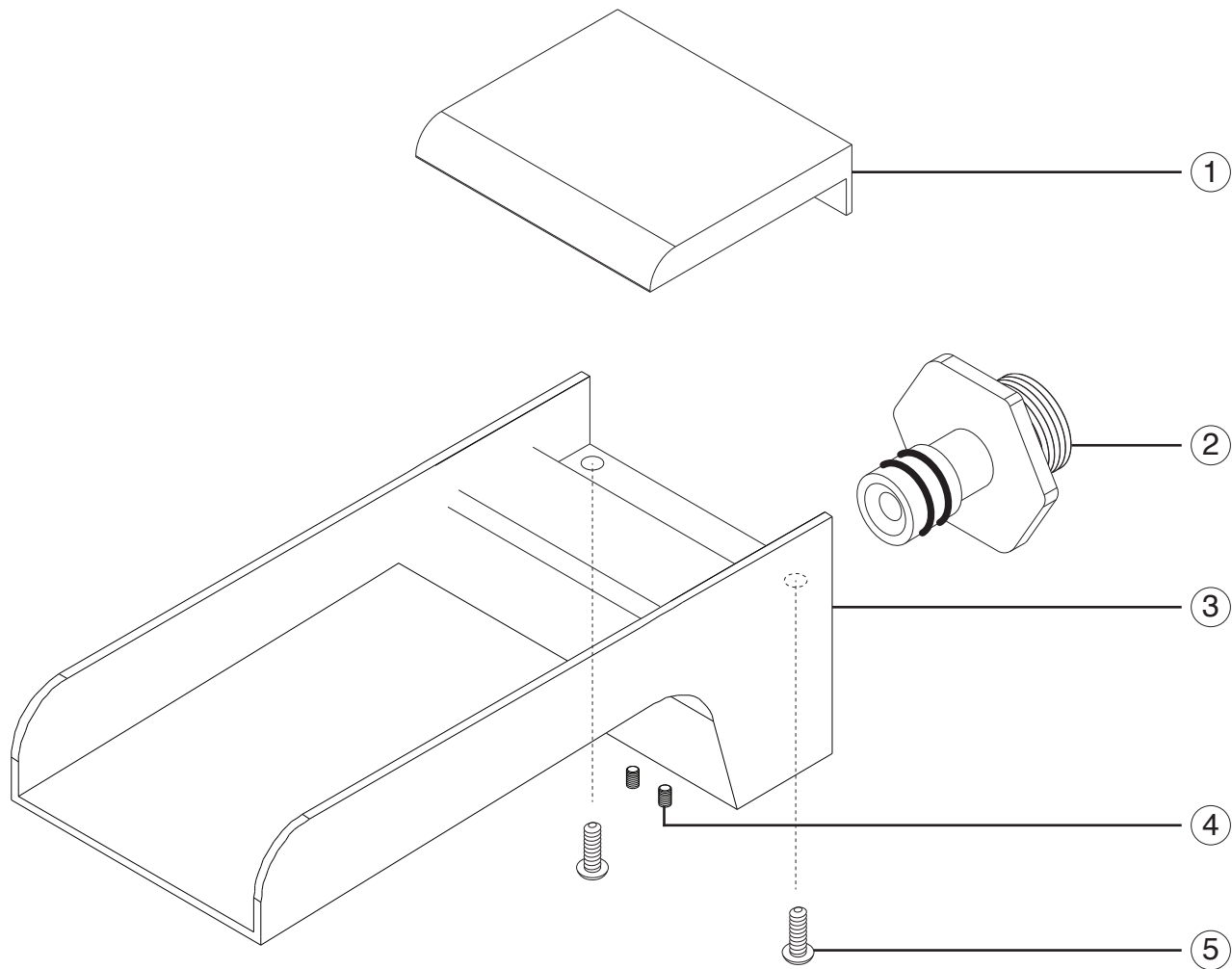
STEP 5



INSTALLATION STEPS

STEP 6





- ① BODY COVER
- ② FEMALE CONNECTION
- ③ BODY
- ④ SET SCREWS
- ⑤ COVER SCREWS