

## Transducer Mount Installation To Pole

- 1.) Remove hitch pin from Summit's Transducer adapter.
- 2.) Slip transducer mount over end of pole.
- 3.) Mark center point of hole in transducer adapter on pole on both sides of pole.
- 4.) Remove transducer from pole.
- 5.) Drill a 1/4" hole through one side of pole, then rotate and drill other side. You can drill straight through from 1 side of pole, but it can be difficult to hold straight which is why we suggest marking and drilling from both sides.
- 6.) Slip transducer onto pole and fasten with hitch pin.

### Attaching Livescope Transducer to Mount

Summit's Livescope transducer mounts must be used with the hardware provided with your original Livescope transducer mount. The Garmin shoulder bolt, washer, and rubber spacer must be re-used with the Summit Mount.

It is critical that the shoulder bolt is fully tightened, and the shoulder bottoms out on the transducer. **The recommended torque for the shoulder bolt is 2.5 ft-lb or 3.4 nm.**



### Troubleshooting.

- If the mount feels loose or does not "click" into position, either the rubber spacer is missing or the shoulder bolt is loose. Without the rubber spacer, the mount will never fully tighten.
- If the mount is initially tight and then loosens after use, the shoulder of the bolt did not bottom out on the mount and the bolt has loosened up.

The mount can be installed on either side of a pole or trolling motor shaft, with examples shown below.



**Perspective Mode**



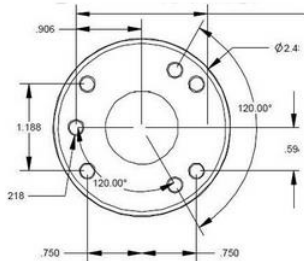
**Down/Forward Mode**

## Transducer Pole Mount Installation

Summit's pole mount system is comprised of 4 components, 2 of which will vary depending on the options chosen.

### **Step 1: Ball Mount Installation**

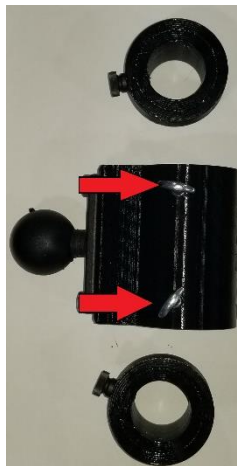
Choose a location to install the 2.5" Round ball base on the gunwale or deck of the boat no more than 6-9" away from the boat's rub rail. The mounting hole pattern is shown below.



If you have access behind the mounting location, it is recommended to drill clearance holes and use machine screws, with washers and lock nuts to secure the mount to the surface. If there is no access behind the location, wood or metal screws will need to be used depending on the construction of the mounting surface. The base does not need to be mounted level or plumb due to the adjustability of the RAM system.

### **Step 2: Install Collars On Pole**

Remove the 2 collars from the boat mount by loosening the 2 silver thumbscrews.



Slide 1 collar over the end of the pole (the end with the cap) with the black thumb towards the bottom of the pole. Be sure to align the thumbscrew with the groove in the pole.

Finally, slip the boat mount over the end of the pole and secure the remaining collar, making sure to align the black thumbscrew on the collar with the groove on the pole. The boat mount should look like the image below.



### **Step 3: Connect To Ball Mount**

Using the RAM double socket arm, connect the pole to the RAM ball mount and tighten nut on the arm.