

A photograph of a man and a woman in a close embrace. The man is shirtless and has a beard, leaning over the woman. The woman has long dark hair and is wearing a light-colored top. They are positioned on a plush, red velvet surface, possibly a bed or a large cushion. The background is a simple, light-colored wall. The overall mood is romantic and sensual.

# LIBERATOR<sup>®</sup>

*Positions & Possibilities*

# — TABLE OF CONTENTS —

Original Label.....Page 5

Black Label.....Page 25

Sex Furniture.....Page 38

**THE LIBERATOR MISSION** *We created this position guide to help you get the most out of your Liberator Shapes and Sex Furniture. Beyond the physical advantages, our products also have the resounding effect of enhancing intimacy and fulfillment with your lover. We want you to take a journey with your partner, and this sensual adventure will bring the two of you closer than you ever imagined.*

*Each of these positions can be achieved with more than just the Shape pictured, and we have made recommendations as to which ones will give you the most thrilling experience. Of course, these are not the only options available. The only limit is your imagination, so grab someone you love and start exploring.*

*Liberator is best when shared.*





## SETTING THE SCENE

A bed covered in rose petals is the stereotypical set-up for any romantic evening, but true romance is about mindfulness and communication. Rather than recreating that classic scene from the movies, try thinking about your partner's favorite things, and use them to engage all five senses when decorating for that special evening.

- **Sight.** Does he like sexy undergarments? Does she prefer dimmed lights? Dress the room in a feast for your partner's eyes.
- **Smell.** Does she have a favorite candle to light? Did he give you perfume for your birthday last year? Scent can be linked to memory, so try using the same scent from your last passionate romp.

- **Sound.** If he has a favorite song, turn it up. Or, rather than relying on the words of others, make your pleasure known loud and clear so that even the neighbors will be able to hear your passion.
- **Taste.** Everyone has a favorite food, so why not add another level of sensuality by feeding it to your lover. Better yet, turn your body into a banquet by wearing whip cream and strawberries and have him or her lick you clean.
- **Touch.** If she loves silky sheets, then dress your bed in luxury, but also try adding in a couples massager or a finger vibe to make her tremble with every touch.



# THE DOWN LOW

Recommended with the Wedge,  
Ramp, Hipster, and Jaz series

## — DELICIOUS DOGGY —

Our Shapes are designed to take this position above and beyond the usual. Try these tips with your Shape to make this move skyrocket.

- **Experience.** With Shapes like the Ramp or Wedge, the woman has the ability to fully relax while placing her body at the perfect angle to receive this pleasure. Lose yourself in this moment of intimacy and focus on the intense sensations.
- **Escalate.** Because of the angle and elevation that our Shapes provide, you'll find your sessions going longer with amazing staying power. You and your partner will be able to take the time to explore all of the pleasures with this posture.
- **Experiment.** The old saying might be that you can't teach an old dog new tricks, but we feel differently. Try taking this position to new heights and try the "super doggy" by placing your knees on the edge of the Shape rather than your hips, giving your partner new depths to explore.



# THE RODEO

Recommended with the  
Wedge, Whirl, and Wing





**STANDING OVATION** Recommended with the Wedge, Hipster, and Wedge/Ramp Combo



# EVOLVED ORAL

Recommended with the Wedge,  
Ramp, Jaz series, and Flip Ramp





## ORAL PLEASURES

While each cunnilingus connoisseur has his or her own special techniques for pleasing a partner, we've got a few tips to take any oral fixation to a new level of pleasure.

- **Get comfortable.** Several of our Shapes are designed to provide the best positions not just for receiving oral, but giving as well. Of course, we don't just mean physically comfortable—communicate with your partner about what feels good and it will make the entire experience more explosive for both of you.
- **Explore the area.** Rather than focusing on the obvious places and pushing for an orgasm, we recommend taking your time, and getting to know the surrounding areas before diving below. You'd be surprised how much your partner will enjoy the attention.
- **Be enthusiastic.** Giving pleasure can be just as amazing as getting, and finding joy in your partner's release will help you discover a depth in your relationship that you never thought possible. Plus, the receiver will be even more turned on by hearing or seeing how much you enjoy the job at hand.



# CIRCLE DRIVER

Recommended with the  
Whirl and Wing

# THE HIGH RISE

Recommended with the Ramp,  
Hipster, and Flip Ramp





# TAKE FLIGHT

Recommended with the Ramp, Hipster,  
Flip Ramp, and Wedge/Ramp Combo



**EXPLORE MORE** *If you are concerned for your bedding, consider our Fascinator Throw. These supremely plush blankets are specially designed to slurp up lubes, lotions, and any other leftovers of sexual play while providing the ease of being machine-washable.*

# HER HIGH PLANE

Recommended with the Ramp,  
Hipster, and Flip Ramp in combination  
with the Wedge





**SIDEWINDER** Recommended with the Hipster and Flip Ramp



**HITTING THE SPOT** It is mentioned in the *Art of Sexual Healing* and the *Kama Sutra*, but was not formally named until the 1950's when Dr. Ernest Grafenberg wrote an article for the *International Journal of Sexology*. He claimed to have found a spot on the vaginal wall a few inches from the opening on the side closest to the stomach capable of producing immense pleasure for a woman. This spot was soon to be known as "the G-spot."

Since Dr. Grafenberg's article, the existence of the G-spot has been debated by scientists across the globe, and many women and couples have spent countless nights in the bedroom trying to locate and stimulate this Holy Grail of erogenous zones. Thankfully, we at Liberator have designed our Shapes to end this treasure hunt. Our products were thoughtfully cut at precise angles and given exact elevations to encourage the correct incline for both partners, turning you both into masters of the G-spot.

If you are looking for the best positions to stir this sacred spot, there are quite a few pictured in these pages. However, we've narrowed it down to the three most likely to make her moan.

- *The Standing Ovation.* Recommended to pair with the Wedge, Hipster and Wedge/Ramp Combo, the secret to this position is the elevated legs and rear end. This angle causes the penis to move upwards, stimulating the G-spot in an incredible way.
- *The Wave.* Not only is this position fantastic for allowing the female to control the stimulation, the closeness of your bodies will radiate intimacy. The curves of the Esse and Esse Chaise are specifically designed to give you the support and comfort to make this position last as long as you can stand.
- *The Down Low.* We encourage you to try this with the Wedge, Ramp, Hipster or any of our products from the Jaz series, as the specific lift that these products give will turn traditional doggy style into an arousing position that zeros in on that special spot.





# THE PLOW

Recommended with the  
Wedge/Ramp Combo and  
Scoop/Wedge Combo



**THE SCIENCE OF GREAT SEX** Archimedes once said, while demonstrating the principles of a lever, “Give me the place to stand, and I shall move the earth.” We at Liberator are more concerned with rocking your world, which is why we created many of our Shapes to act as a lever or fulcrum point during your lovemaking.

For those not in the know, the fulcrum is a point around which something turns. By applying this concept to our ergonomic designs, several of our Shapes can be placed underneath the ankles or knees to allow you and your partner’s bodies the support and freedom to pivot in ways that will most definitely move your universe.



# CLOSER TO HEAVEN

Recommended with the Wedge/Ramp Combo

## RECIPE FOR SEDUCTION

### Malena

*Cinnamon can produce 'heat' within the body, and has been measured to increase both the physical and sexual appetite. It is even said that a drop of cinnamon oil rubbed onto the genitals can create powerful sexual stimulation. Try sipping this classic cocktail before your next encounter and feel your temperature rise.*

1 oz. Straight Rye Whiskey, 100 proof

1 oz. Campari

$\frac{3}{4}$  oz. ruby port

5 drops of orange blossom water

3 dashes of orange bitters

ground cinnamon for garnish

orange half wheel for garnish

.....

Stir all ingredients, except orange blossom water, in a mixing glass briefly. Add 5 drops orange blossom water over ice in rocks glass. Strain liquid into rocks glass. Garnish with ground cinnamon and an orange half-wheel.





# ON A ROLL

Recommended with the  
Whirl and Wing



*The Axis-Magic Wand*

**CREATE YOUR PLAYGROUND** Love your toy, but want more? Liberator's toy mounts give you the incredible option of getting more pleasure out of your favorite vibes and dildos by providing a soft, supportive cushion to house your toy while the ergonomic designs help you receive stimulation and vibrations in a whole new way.

The Wing is one of our favorites, and is ideal for straddling, putting you in a comfortable position for masturbation. It works great with dildos, but can also hold vibes. The smooth curves also make it an incredible product for couples, and the multiple pockets mean that you can hide a small vibrator in it, turning it into a vibrating mount.

The BonBon is a fan favorite for enjoying your alone time. The super dense foam holds you securely, allowing you to sit on top without bracing yourself and leaving your hands free to roam.

If you are a Magic Wand fan, we have the perfect mount. We took our Axis Positioning Shape and designed a support for the Magic Wand, appropriately naming the mount the Axis-Magic Wand. With or without the Magic Wand, the Shape provides deeper penetration and angles for increased stimulation, while still giving you the ideal support to be comfortable.

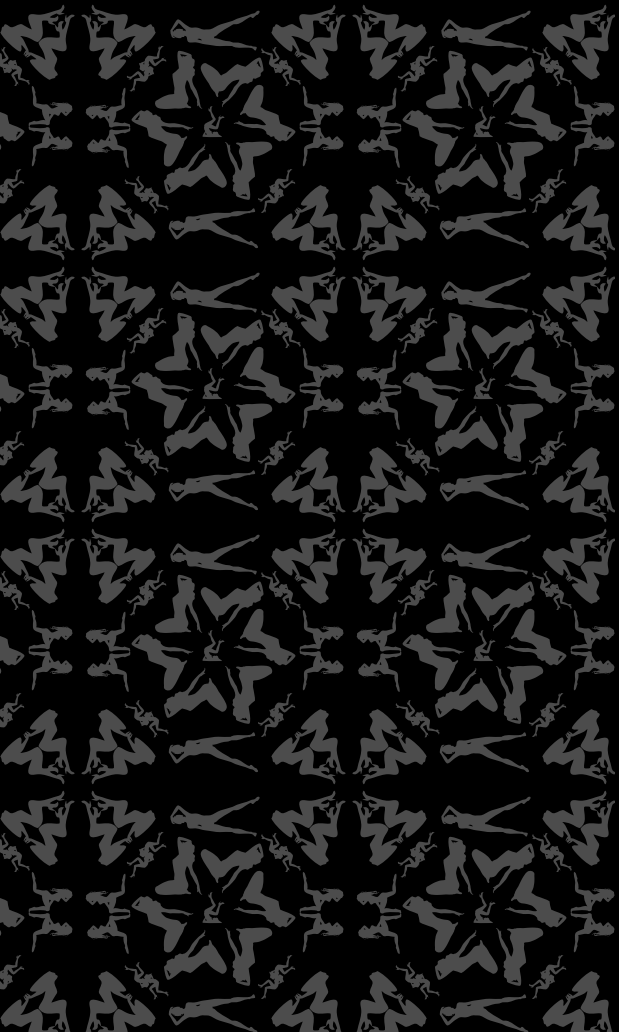


*The Pulse*



*The BonBon*





*black label collection*

## — DARE TO DOMINATE —

The Black Label Collection provides all of the support and increased sensation as our Original Series, with the added option of playful restraint. Perfect for those who delight in something different, all of these Shapes feature connector points to which you can hook cuffs, D-rings or sashes, and they give you a delicious and comfortable place to explore, experiment and tease.





# DIRTY DOGGY

Recommended with the  
Black Label Wedge and Hipster



**INDULGE IN YOUR FANTASY** Our Black Label Shapes are the ultimate playscapes for those who like to tease and titillate, giving you free reign to experiment with playful bondage. The amazing thrill of allowing your partner to act on his or her desires without hesitation is only amplified by what you add to your role playing games. If you wish to include cuffs, our many options range from adjustable Velcro lined with microfiber to handcrafted leather cuffs from Liberator LeatherWorks. You can also try blindfolding your partner to heighten every touch, or replacing the cuffs with silky tie-ups to add a whole new sensation. Or, perhaps you'd prefer softly dragging a leather whip across his or her back to create shivers, or lightly popping his or her rear with a paddle. Whatever you choose, we hope that the only thing not restrained is your imagination.



**PIN & NEEDLE** Recommended with the Black Label Hipster, Scoop, and Ramp



## LIFT OFF

Recommended with the Black Label  
Hipster and Wedge/Ramp Combo



# WHIPPED CREAM

Recommended with the Black Label  
Flip Stage, Center Stage, and Ramp

**EXPLORE MORE** *The Black Label Collection offers many options for decadent bondage play beyond standard cuffs. One of our favorite luxuries is the Liberator Silk Binding Sashes. Made from real silk, the sashes feel wonderfully cool and smooth against your skin. Use them with your Shape or alone to create beautiful patterns and loops around your lover.*







# TWISTED TOWER

Recommended with the Black Label  
Wedge/Ramp Combo and Flip Stage

# EASY RIDER

Recommended with the Black Label  
Center Stage and Equus





## BOUND BUTTERFLY

Recommended with the Black Label Hipster, Ramp, and the Wedge/Ramp Combo in combination with the Flip Stage



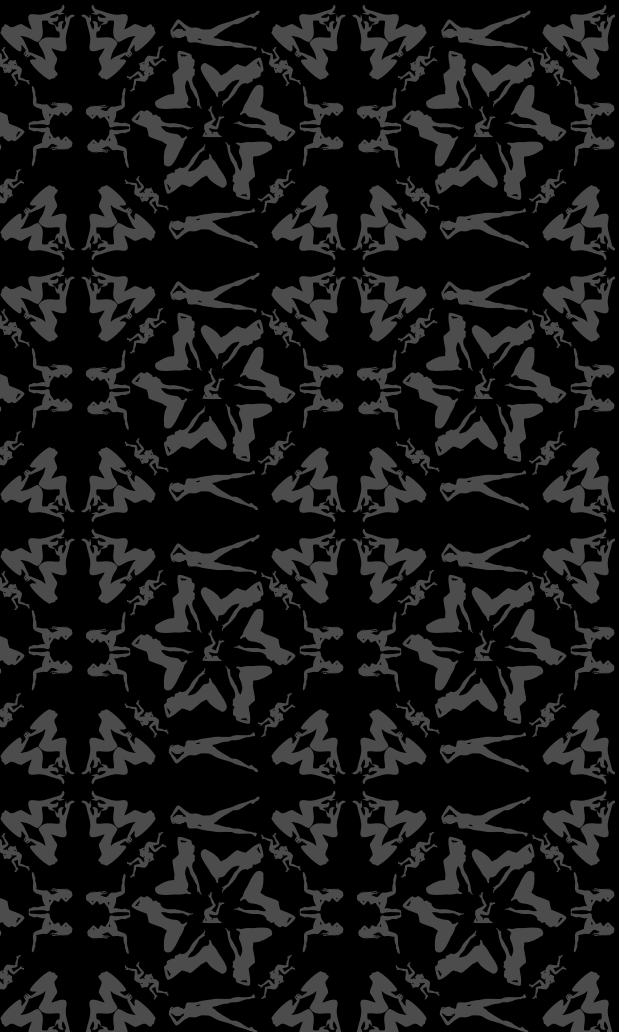
**EROTIC GLASSWORKS** We know that you create art in the bedroom every time you and your partner are intimate, but what about using art in the process? Our Liberator GlassWorks is all about combining the beautiful with the intimate, with an ever-evolving collection that is manufactured and offered exclusively from local artisans.

Our pieces are unique in brilliance and transparency with every creation a limited production art form, including stunning contemporary phallic sculptures, scepters with embellished textures, exquisite jewelry for the derrière, and fully-functional forms for prostate stimulation. Every element of this collection is designed not just for elegance, but to stimulate you in ways that you never thought possible. Experiment with a new medium and create a masterpiece in the process.

## EASY CLEAN UP FOR DIRTY MINDS

We know that you like to play with your food, so we created several products that let you get as messy as you like without worrying about the clean-up. Our Equus Wet is a vinyl-covered supportive foam bench perfect for giving slick massages, the Escape Wet is the world's only liquid-proof sex pad sized for two, and our Slick Sheet & Shams are made from washable PVC and slip over your current bedding. So pour the champagne, paint with chocolate sauce, and lather on the whipped cream; you've got the perfect playscape to help you enjoy dessert with—and on—your lover.





*chaises & loungers*



# THE WAVE

Recommended with the  
Esse and Esse Chaise



# HEAD OVER HEELS

Recommended with the  
Esse, Esse Chaise, and Equus





## CLOUD 9

---

Recommended with the Zeppelin,  
Zeppelin Lounger, and Zeppelin Cocoon

## — GET THE MOST — OUT OF YOUR ESSE

You already know that the Liberator Esse and Esse Chaise are versatile when it comes to your positions, but do you know what else they can do? The headrest works at either end of the Esse, and is useful for raising up knees or adding 5" of height for standing and bending-over positions. The Esse's Mini-Scoop will eliminate the center dip, and can be used separately as a Shape, providing lift and motion to lovemaking on a bed. Plus, when your fun is done, your lounge works as a comfortable place to read or have an afternoon nap.



# TANGLED TIGER

Recommended with the Black  
Label Esse and Esse Chaise





# MAGIC MOUNTAIN

Recommended with the Black Label Esse,  
Esse Chaise, and Equus



**DOWNWARD DOGGY** Recommended with the Esse, Esse Chaise, and Ramp



# WICKED COWGIRL

Recommended with the Black Label Esse,  
and the Black Label Ramp and Center Stage



## REVERSE WICKED COWGIRL

Recommended with the Black Label Esse,  
and the Black Label Ramp with the Flip Stage



**EXPLORE MORE** *Want to cuff your partner but don't have any bedposts? Our Bed Buckler features an innovative web-strap restraint system that slips between the mattress and box spring of both King and Queen size beds, and it is complete with four 20-inch tethers that wrap up around to the surface of the bed to allow you to cuff all four of your partner's limbs.*





# QUEEN OF SHEBA

---

Recommended with the Black Label  
Equus and Flip Stage

# THE SWAN

---

Recommended with the Esse,  
Equus, and Esse Chaise



## RECIPE FOR SEDUCTION

### Chocolate-covered Strawberries

*Since as early as 200 BC, folklore, art and poetry have portrayed eating strawberries as a romantic act. The deep red of the berries was seen as the color of passion, and the large number of tiny seeds were revered as a symbol of fertility, causing these berries to gain a reputation as an aphrodisiac. Often seen combined with whipped cream or champagne, we prefer to pair this sweet fruit with another sensual aphrodisiac, chocolate, and hope that this dessert helps inspire you to write some poetry of your own.*

1 dozen ripe strawberries

1 cup chopped chocolate (preferable) or good-quality chocolate chips

.....

Prepare a baking sheet by lining it with aluminum foil. Wash the strawberries and dry them thoroughly.

Place the chocolate in a microwave-safe bowl and microwave until melted, stirring after every 30 seconds. Remove it when some pieces are still not melted, and stir until they melt. If you are using low-quality chocolate chips, you might need to add a little coconut or vegetable oil to thin it out and make it easy to work with.

Holding a strawberry by the stem, dip it in chocolate, twirling it in a circular motion to evenly cover most of the berry. Place the berry on the prepared baking sheet and repeat with remaining berries and chocolate. Once all of the berries are dipped, refrigerate them for 30 minutes to set the chocolate. These candies taste best when eaten the same day they are made.



# LAP DANCE

---

Recommended with the Black Label  
Equus, Esse, and Esse Chaise



with love,

**LIBERATOR<sup>®</sup>**