

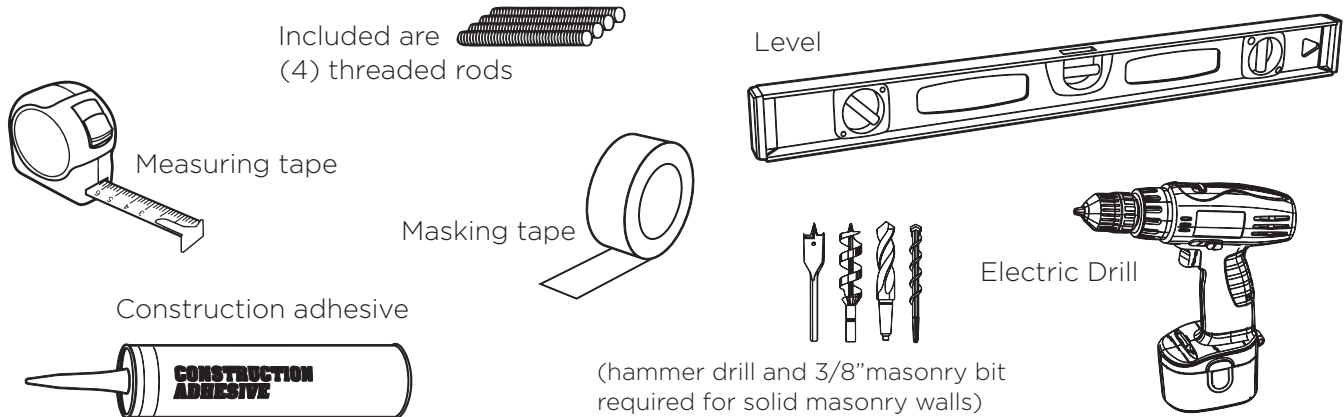


# ADDRESS NUMBERS INSTALLATION

---

## *Tools & Supplies:*

---



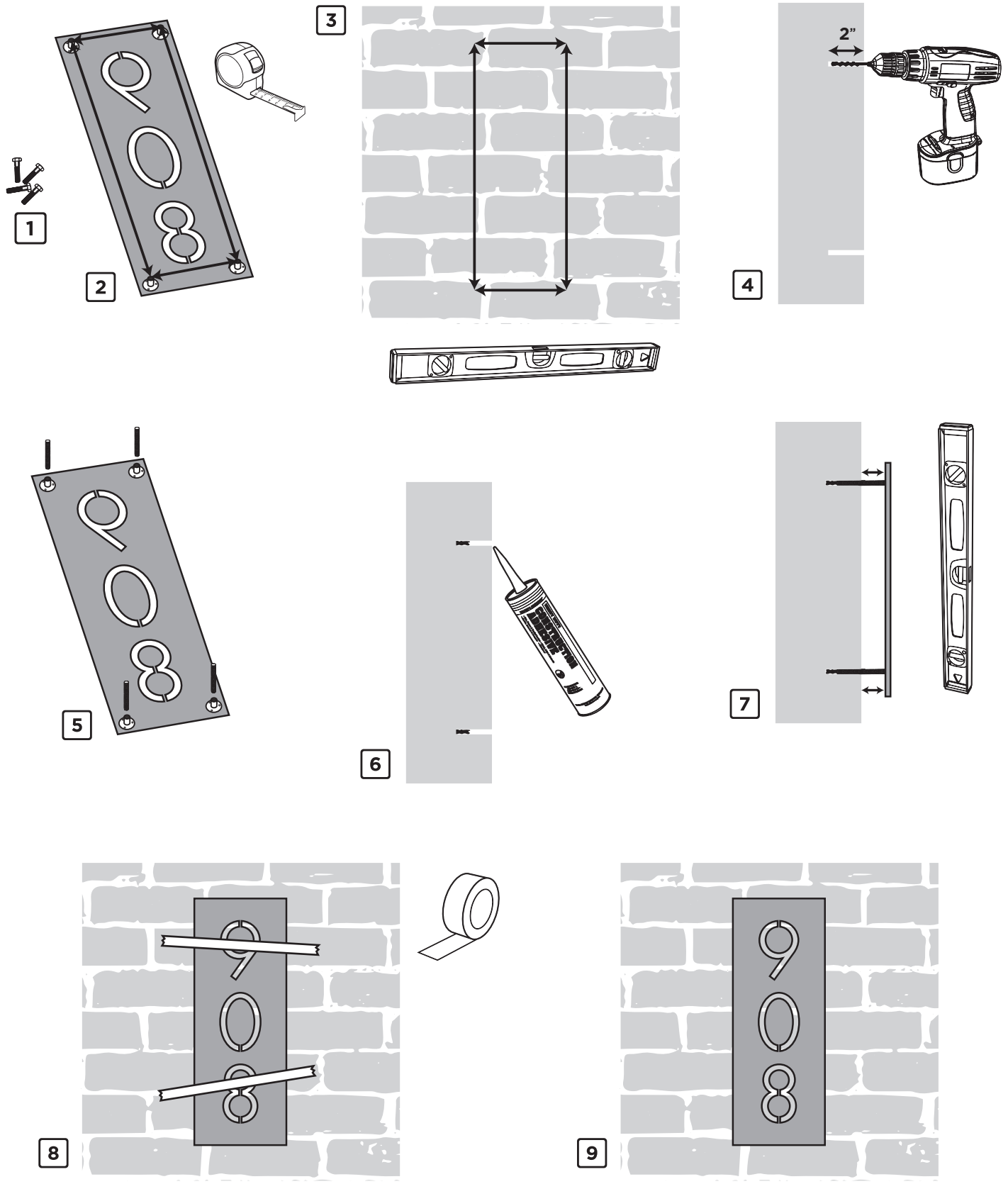
---

## *Instructions:*

---

- 1** Remove the bolts that are inserted into the T-nuts.  
(These are used only for shipping purposes only.)
- 2** Measure the distance between the centers of all four t-nuts, located at the back of your address plaque.
- 3** Measure and mark the same distance on your wall for all four holes to be drilled. Ensure that the markings are level, so that your address plaque will hang accordingly.
- 4** With the appropriate tool for your exterior covering, drill through your four marked holes. We recommend a 2 inch minimum depth.
- 5** Hand-screw the threaded rods to the back of your address plaque, ensure that they are each securely tightened.
- 6** Insert construction adhesive into each hole on your wall covering. Fill approximately 1/3 full.
- 7** Set address plaque into place. Check that it is level and in plane with wall surface.
- 8** Use masking tape to keep adhesive from dripping from the holes.
- 9** Let adhesive set up for at least one hour before removing tape.

*Continued* →



Have questions? Please contact us at [sales@boldmfg.com](mailto:sales@boldmfg.com)