

The World's Most Versatile Booster System



Pressure Tank

Eliminates short cycling and helps accommodate thermal expansion.

Pressure Gauge

Displays total system pressure

Circuit Board

Sophisticated programming assures proper operation in all conditions.

Digital Control

Single knob for simple pressure adjustment. Status light indicates standby, run and fault modes

Transducer

Constantly monitors system pressure.

Inlet w/Check Valve: Residential

No-Lead Brass NPT thread with large wrench flats for easy & secure pipe connections

Inlet w/Check Valve: Light Commercial

No-Lead Brass NPT thread with large wrench flats for easy & secure pipe connections

Union Swivel

Allows for 360° adjustment of discharge.

Motor

Totally enclosed fan-cooled motor for quiet operation and low power consumption

Pump

All stainless construction for tough water conditions.

DuraMAC™ Booster Pumps

A.Y. McDonald's Full Line of DuraMAC™ Booster Pumps

Vertical Multistage Variable Speed Simplex & Duplex Boosters



Dual-Mode Modular, Simplex, & Duplex



E-Series, Residential, Light Commercial, & Irrigation Boosters



How It Works

The DuraMAC™ Water Pressure Boosting System can be set to three separate modes, which can accommodate virtually any application.



PRESSURE MODE

START METHOD: Pressure drop
STOP METHOD: Low flow
TYPICAL INSTALLATION: Appropriate for the majority of light commercial or residential applications
RESULT: Pump operates continuously while there is a need for water



FLOW MODE

START METHOD: Water flow
STOP METHOD: Low flow
TYPICAL INSTALLATION: Application where pressure fluctuates, or occasional system leaks are present
RESULT: Pump operates when usage of water exceeds approximately one gallon per minute



CONSERVATION MODE

START METHOD: Pressure drop
STOP METHOD: Low Flow
TYPICAL INSTALLATION: Application where pressure is adequate for most uses, and boosting is only necessary for high demand
RESULT: Pump will operate only when system pressure is below city supplied pressure and operate continuously while there is demand for water

DuraMAC™ Booster Pumps

DuraMAC™ Residential, Light Commercial, & Irrigation Pump Control (excludes E-Series)

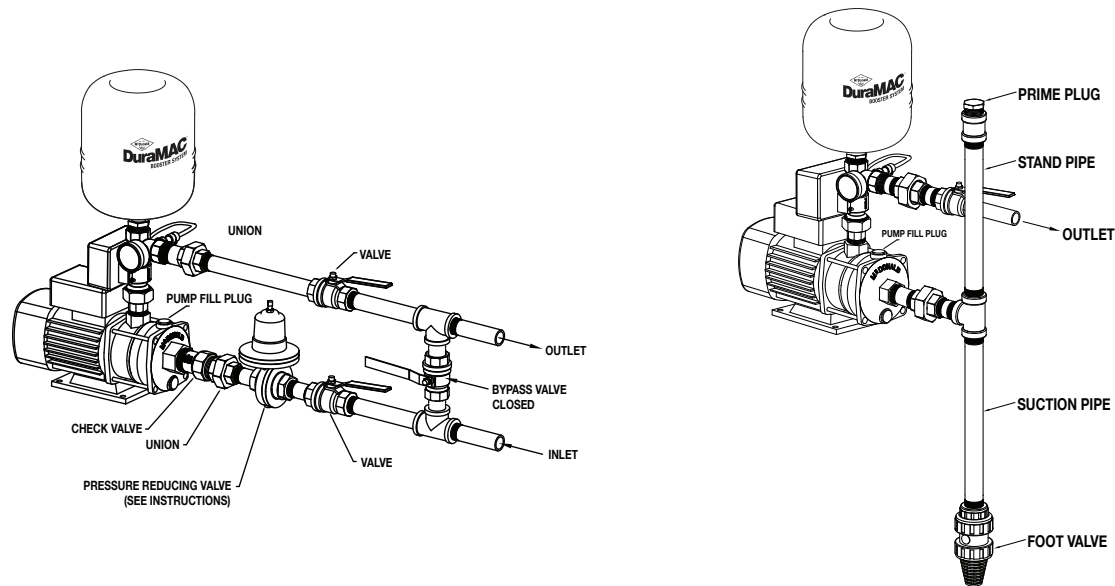


New Pump Control 115V

115V DC: B17 - Current
 230V DC: F17 - Current

Typical Installations

Not all boosting applications require complicated boosting systems. The DuraMAC™ Booster System is simple, versatile, sophisticated, and reliable. Quite simply, it is the World's Most Versatile Boosting System.



Versatile

It is the first booster pump of its kind to be designed for virtually all boosting applications. In Pressure Mode, the pump starts with pressure drop and stops on low flow. In Flow Mode, the pump starts and stops by sensing flow. In Conservation Mode, the pump only operates during a peak demand, such as when multiple showers, bathtubs, or irrigation systems are running.

Simple

A single-speed, totally enclosed fan-cooled motor drives the DuraMAC™ booster pump with single phase power. It is controlled with one dial and tells you it is working properly by illuminating a single status light. The settings and readouts are simple and straight forward.

Sophisticated

A pressure transducer constantly monitors system pressure and alerts the pump control to start the pump as water in the system is used. The pump then stays on, boosting the system pressure until the need for water is no longer present, indicated by low flow.

Reliable

Electronic components are completely separated from piping and water ways for added safety and ease of field repair. The DuraMAC™ is built from scratch with one purpose in mind - boosting water pressure. Each component of the system is specifically designed to work together, as one harmonious unit.