

5050CVSP & 5050CUSP25 Sump Pumps

With a rugged cast iron construction, the 5050CVSP and 5050CUSP25 can handle up to 70 gallons per minute (GPM).

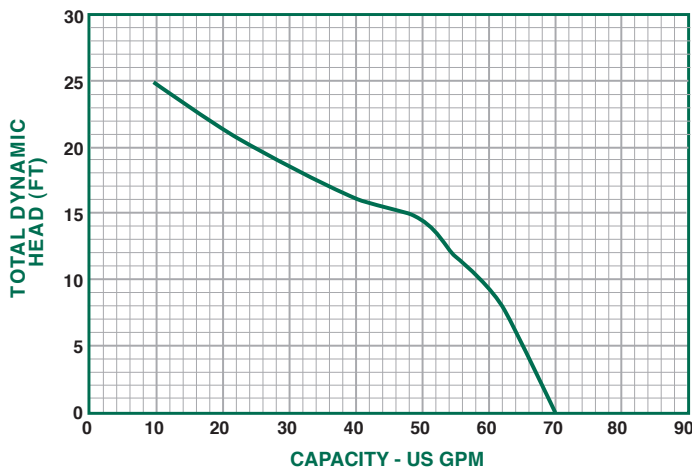
Features:

- Split Capacitor Motor - 1/2 HP continuous duty, thermal protected
- Lifts water up to 25' of vertical height
- 10' power cord, 25' cords are available for an additional charge
- Large 1 1/2" discharge for high capacity pumping
- Also available without a switch
- Clog resistant impeller
- Vertical float switch

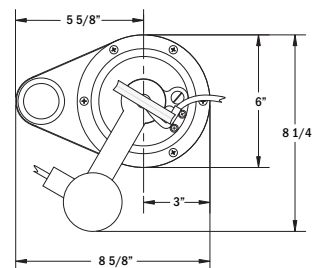
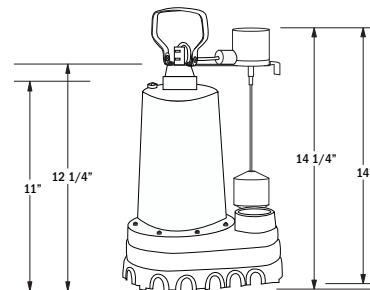


See Pumps & Accessories Price List for Limited Warranty details.

Performance Curve



Dimensions



Performance

Model	0	5	10	15	20	25
5050CUSP25	70	66	58	48	25	10
5050CVSP						

Specifications

Model No.	HP	Volts	Hz	Amps	Construction	Discharge Size	Cord Length	Solids Handling	RPM	Phase	Wt.
5050CVSP	1/2	120	60	7.6	Cast Iron	1 1/2"	10'	1/2"	3450	1	25
5050CUSP25 (NO SWITCH)	1/2	120	60	7.6	Cast Iron	1 1/2"	25'	1/2"	3450	1	27

Sump, Sewage, & Effluent Pumps