



INSTALLATION INSTRUCTIONS
for RZ19-10001 RZR Pro Rock Slider Steps

REV A - 02/03/23



Kit Contents:

- 1 x LH Side Step
- 1 x RH Side Step
- 6 x Frame Insert Nuts
- 6 x M12 Bolts
- 6 x M12 Washers

Tools Required:

- 19mm or ¾" shallow socket
- 19mm Open End Wrench
- 10mm socket

COMPATIBILITY:

2019+ RZR Pro XP4

2022+ RZR Pro R4

2022+ RZR Turbo R4

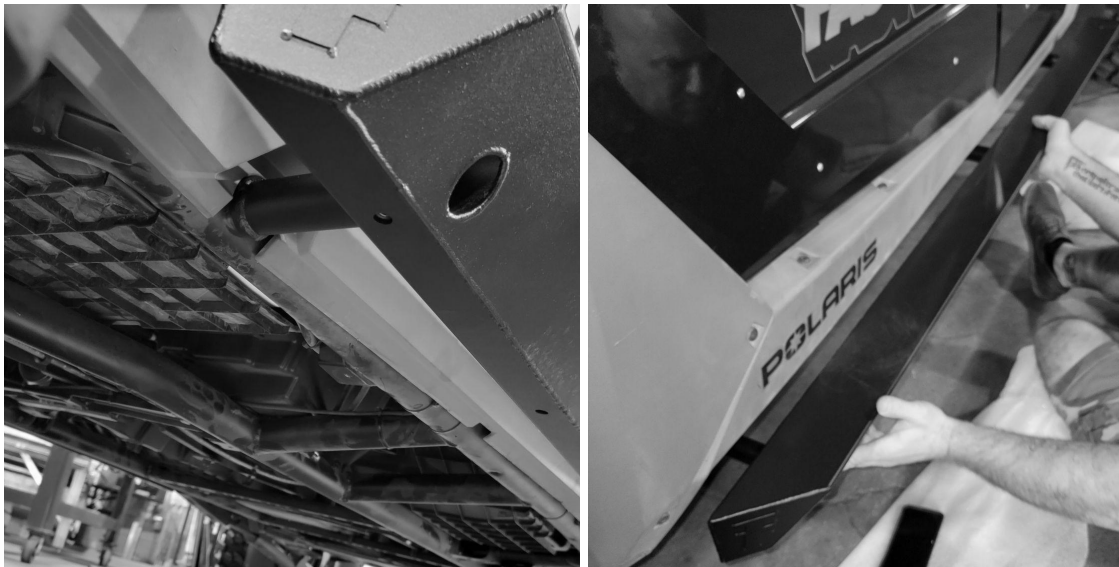


INSTALLATION INSTRUCTIONS
for RZ19-10001 RZR Pro Rock Slider Steps

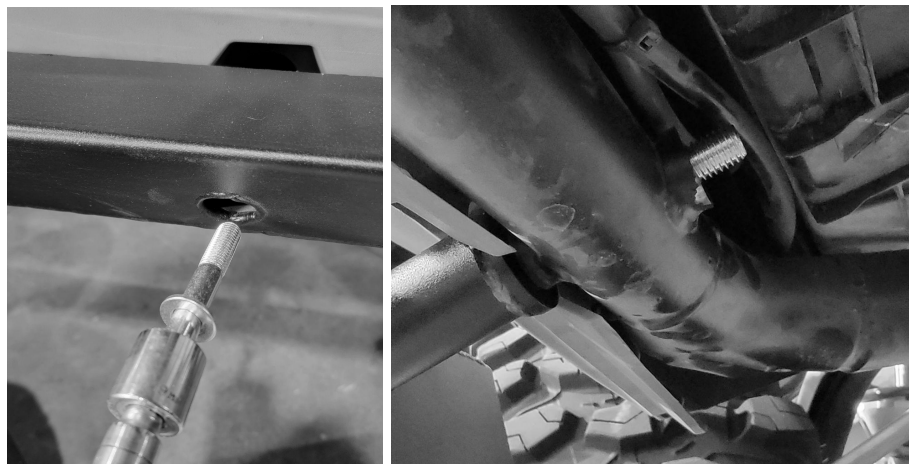
REV A - 02/03/23

Installation can be done with one person but it is helpful to have a second set of hands to support the Rock Sliders and install the bolts. Estimated install time is 1-2 hours.

- 1) Remove the bottom skid plate from the belly of the vehicle. There are 21 bolts with 10mm heads. Dropping the entire skid makes the following steps easier.
- 2) Once you can access the inside of the 3 frame tubes, grab one of the Rock Sliders and insert the 3 bosses into the frame tubes. Use Jack Stands or a helper to hold the Slider in position.



- 3) While one person holds the Slider in place, the other can slide the bolts into place. Use a shallow 19mm or 3/4 socket with an extension to push it through the tube. Apply some thread locker to each bolt before threading on the nut insert.

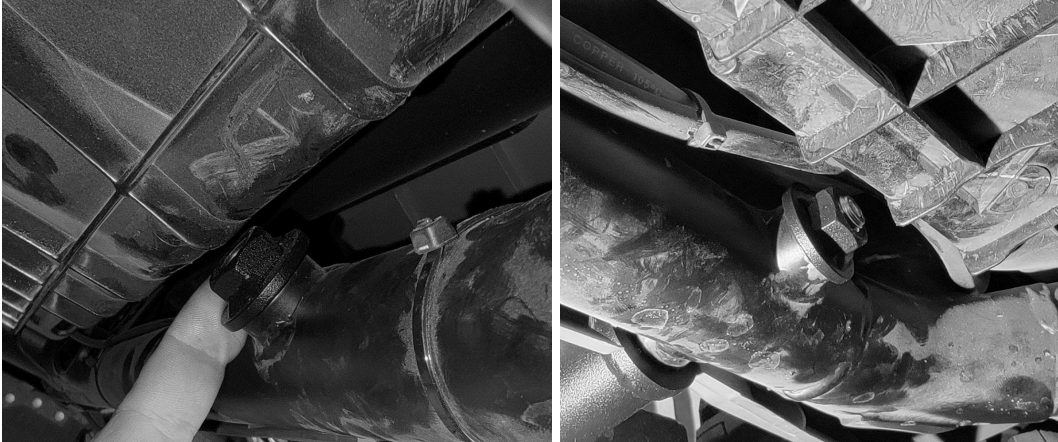




INSTALLATION INSTRUCTIONS
for RZ19-10001 RZR Pro Rock Slider Steps

REV A - 02/03/23

- 4) The middle insert is tight against the footwell area but will fit into place with a little force. Once all three frame inserts are located, torque them to 75 ft lbs.



- 5) Once all three bolts are torqued, move to the other side and repeat the previous steps.

- 6) Now with both Rock Slider Steps fully installed, it is time to reattach the skid plate. While holding it up into position, start all the bolts before tightening them down. Once all the bolts are started, tighten them back up the factory specification. You now have a fully functional step to help getting in and out of your RZR! If you use these in heavy rock conditions, keep an eye on the UHMW Strip along the bottom that is designed to be the wear point as you drag it over rocks. This is a replaceable part. Contact Fastlab UTV for replacement.

