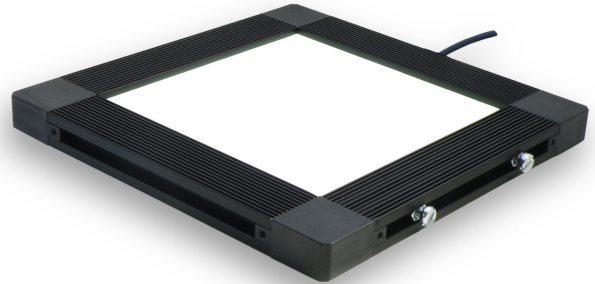


### Product Highlights

- The BX series of Edge-lit Backlights are characterized by their high brightness and low heat output.



### General Specifications

Electrical Specifications	Color	24V Current	All Other Controls
	625	N/A	0.062A Max per inch
	455, 530, WHI	N/A	0.103A Max per inch
	850	N/A	0.05A Max per inch
Normal Operating Temperature	0 - 60°C		
Weight	4" X 4" unit - 560.6g (19.78oz)		
Standard Cable Information	2 m long -0/+150 mm (80" -0/+6") - 105°C rated PVC jacket, foil shield with drain.		
Photobiological Risk Factor	Exempt Applicable Wavelengths: 850 Group 1 (Low-Risk) Applicable Wavelengths: 455, 530, 625, WHI		
Compliance	CE, RoHS, IEC 62471		
IP Rating	IP50		
Lumen Maintenance	L70 = 50,000 Hours		

## Part Number Key

Model	Emitting Length (in)	Emitting Width (in)	—	Peak Wavelength	Connector/ Control	Light Conditioning Option	—	Alternative Connector
BX	XX	XX	-	XXX	XX	X	-	XXX
BX	01" increments from 01" to 24"	01" increments from 01" to 24"		455 (blue) 530 (green) 625 (red) 850 (IR) WHI (white)	C1 C5 IC I3 I3S	P <sup>2</sup> (Polarizer)		M8 <sup>1</sup> M12 <sup>1</sup>
<b>EX:</b> BX0312-455C1 BX0608-625IC-M12				<sup>1</sup> Available with IC, I3, and I3S <sup>2</sup> Maximum size: 16" x 16"; 455 (blue) will reduce the life of the polarizer				

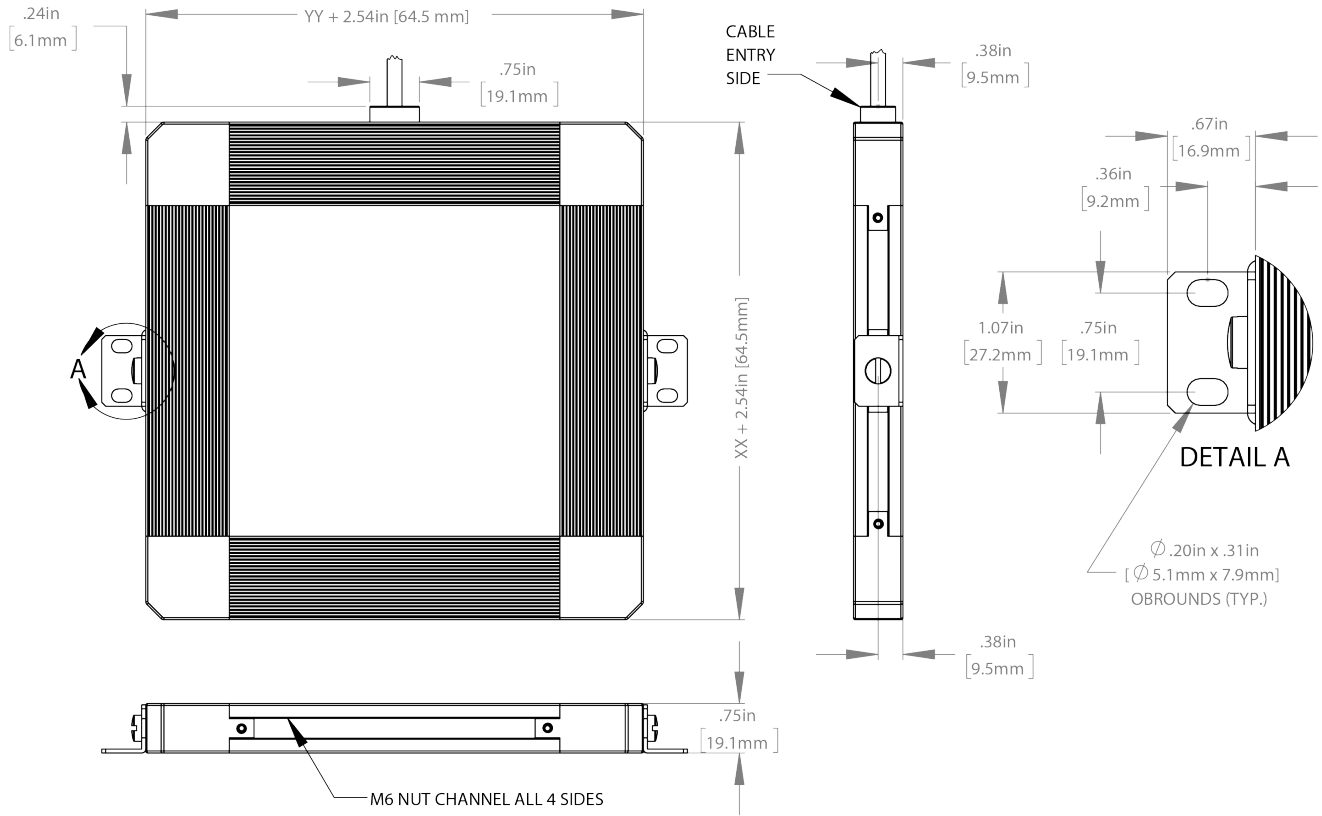
See website product page for in-stock product numbers.

**Shipping:**

Stock Products: within three days

Build-to-Order Products: within one to three weeks

## Mechanical Specs

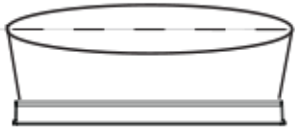


Optical Specs

Area of Illuminance & Intensity

Working Area (FWHM)  
@ Working Distance

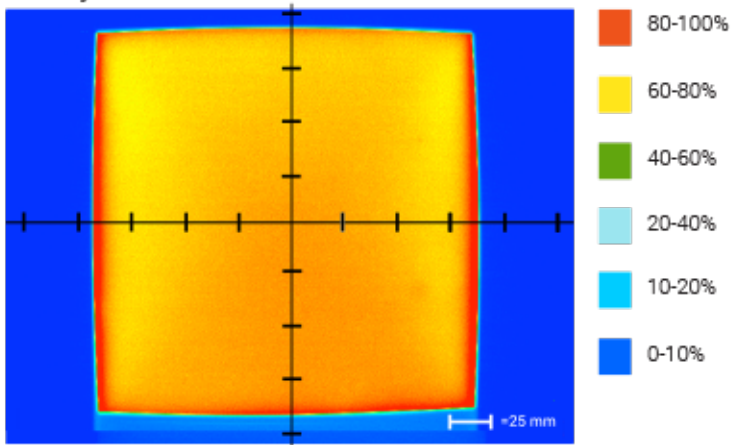
191 X 191 (mm)  
@surface



Light Output

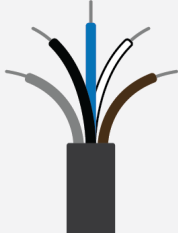
Irradiance (W/M<sup>2</sup>): Min 41.1; Typ 48.4  
Illuminance (kLux): Min 8.8; Typ 10.3

Intensity Distribution



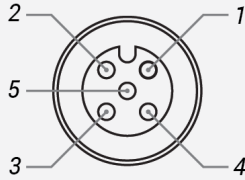
Optical measurement taken using BX0808-625IC

Standard Flying Lead Functions for IC, I3 and I3S Control Options

	COLOR	IC FUNCTIONS	I3/I3S FUNCTIONS
	BROWN	24 V DC	24 V DC
	WHITE	0-10 V ANALOG DIMMING	RESERVED
	BLUE	DC GND	DC GND
	BLACK	PNP/ACTIVE LOW GATE	PNP/ACTIVE HIGH TRIGGER
	GRAY	N/A	0-10 V ANALOG DIMMING

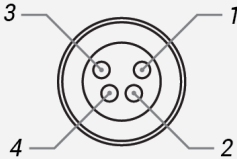
The functions listed above are applicable when this product is configured with built-in IC, I3, or I3S control, **without** the optional A-coded 5-position Male M12 or A-coded 4-position Male M8 connector.

M12 Connector Pinout Functions for IC, I3 and I3S Control Options

	PIN	IC FUNCTIONS	I3/I3S FUNCTIONS
	1	24 V DC	24 V DC
	2	0-10 V ANALOG DIMMING	RESERVED
	3	DC GND	DC GND
	4	PNP/ACTIVE LOW GATE	PNP/ACTIVE HIGH TRIGGER
	5	N/A	0-10 V ANALOG DIMMING

The functions listed above are only applicable when this product is configured with built-in IC, I3, or I3S control, **with** an A-coded 5-position Male M12 connector.

M8 Connector Pinout Functions for IC, I3 and I3S Control Options

	PIN	IC FUNCTIONS	I3/I3S FUNCTIONS
	1	24 V DC	24 V DC
	2	0-10 V ANALOG DIMMING	0-10 V ANALOG DIMMING
	3	DC GND	DC GND
	4	PNP/ACTIVE LOW GATE	PNP/ACTIVE HIGH TRIGGER

The functions listed above are only applicable when this product is configured with built-in IC, I3, or I3S control, **with** an A-coded 4-position Male M8 connector.

For details on operating configurations without built-in control (C1, C5, Q1, and Q4 control, when available), please refer to Advanced illumination's controller manuals.

Control Specs

C1 Connector	C5 Connector	IC	I3	I3S
<p><i>For use with:</i>  <b>DCS Series                      Controllers</b></p>	<p><i>For use with:</i>  <b>Pulsar 320 Strobe                      Controller.</b></p>	<p>Continous in-line                      controller  <i>Powered with:</i>  <b>24V power supply</b></p>	<p>Combination                      strobe/continous                      in-line controller  <i>Powered with:</i>  <b>24V power supply</b></p>	<p>Default-OFF                      strobe/continous                      in-line controller  <i>Powered with:</i>  <b>24V power supply</b></p>

## Warranty Information

Every Advanced illumination, Inc. (Ai) product is thoroughly inspected and tested before leaving the factory. Products are warranted to be free of defects in workmanship and materials for a period of FIVE YEARS from the original date of purchase. Should a defect develop during this period, customers may return the complete product, freight prepaid, to one of Ai's distributors or to the Ai factory. All product warranty returns require a Return Merchandise Authorization (RMA) number which is obtained from Customer Service. The RMA number must be clearly marked on the outside of the package. Ai will inspect the unit, and if a defect is found will, at our option, repair or replace the product without charge. Ai disclaims liability for any implied warranties, including implied warranties of "merchantability" and "fitness for a specific purpose." For products under warranty that have since been discontinued, Ai will make an effort to replace with equivalent parts; for circumstances that do not allow for equivalent replacement, Ai reserves the right to repair or replace these products with an updated version. Ai cannot be held responsible for the unauthorized or inappropriate use of its products. Any unauthorized repair or modifications will result in a voided warranty.

No Liability for Consequential Damages: In no event shall Ai be liable for any consequential, special, incidental, or indirect damages of any kind arising from the sale or use of the products.

## Electromagnetic Compatibility

This product was tested and complies with the regulatory requirements and limits for electromagnetic compatibility (EMC) as stated in the product specifications. These requirements and limits are designed to provide reasonable protection against harmful interference only when the product is operated in its intended industrial electromagnetic environment. To minimize the potential for electromagnetic interference or unacceptable performance degradation, install and use this product in strict accordance with the instructions in the product documentation.

## Customer Service

For information on existing orders, or to make an order adjustment, contact us Monday through Friday 8:00 am to 5:00 pm ET or send an email to [orders@advancedillumination.com](mailto:orders@advancedillumination.com).

## Company Information

### **Advanced Illumination**

440 State Garage Road, Rochester, VT 05767

Phone: 802.767.3830

Fax: 802.767.2636

Email: [info@advancedillumination.com](mailto:info@advancedillumination.com)

Web: [advancedillumination.com](http://advancedillumination.com)

© 2021 Advanced illumination Inc. All rights reserved