

MV-CE060-10UM/UC

6 MP 1/1.8" CMOS USB3.0 Area Scan Camera



GEN*i*CAM

USBTM
VISION

Introduction

MV-CE060-10UM/UC camera adopts Sony IMX178 sensor to provide high-quality image. It uses USB3.0 interface to transmit non-compressed images in real time with max. frame rate reaching 42.7 fps.

Key Feature

- Supports auto and manual adjustment for gain, exposure control, white balance, LUT, Gamma correction, etc.
- Supports hardware triggering, software triggering and free run mode
- Adopts M2 screw holes for securing cable that connects USB3.0 interface
- Compatible with USB3 Vision Protocol, GenICam Standard, and the third-party software based on these protocol and standard

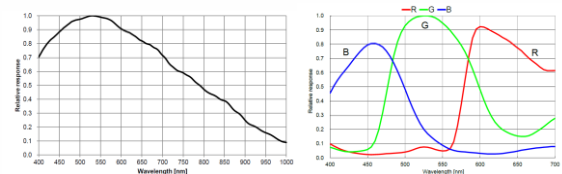
Available Model

Mono Camera: MV-CE060-10UM
Color Camera: MV-CE060-10UC

Applicable Industry

Electronic semiconductor, factory automation, logistics, liquor and beverage, medicine packing, etc.

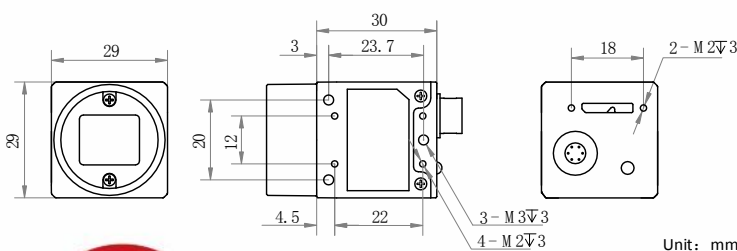
Sensor Quantum Efficiency



MV-CE060-10UM

MV-CE060-10UC

Dimension



Unit: mm



Specification

Model	MV-CE060-10UM	MV-CE060-10UC
Camera		
Sensor type	CMOS, rolling shutter	
Sensor model	Sony IMX178	
Pixel size	2.4 μm \times 2.4 μm	
Sensor size	1/1.8"	
Resolution	3072 \times 2048	
Max. frame rate	42.7 fps @3072 \times 2048	
Dynamic range	71.3 dB	
SNR	41.3 dB	
Gain	0 dB to 20 dB	
Exposure time	16 μs to 1 s	
Shutter mode	Off/Once/Continuous exposure mode	
Mono/color	Mono	Color
Pixel format	Mono 8/10/10p/12/12p	Mono 8/10/12, Bayer GB 8/10/10p/12/12p, YUV422Packed, YUV422_YUYV_Packed, RGB8
Acquisition mode	Continuous mode and SingleFrame mode	
Reverse image	Supports horizontal and vertical reverse image output	
Image buffer	128 MB	
Electrical features		
Data interface	USB3.0	
Digital I/O	6-pin Hirose connector provides power and I/O, including opto-isolated input x 1 (Line0), opto-isolated output x 1(Line1), bi-directional non-isolated I/O x 1 (Line2)	
Power supply	5 VDC to 15 VDC, supports USB3.0 power supply	
Power consumption	< 2.7 W@5 VDC	
Structure		
Lens mount	C-Mount	
Dimension	29 mm \times 29 mm \times 30 mm (1.1" \times 1.1" \times 1.2")	
Weight	< 56 g (0.12 lb.)	
Ingress protection	IP30 (under proper lens installation and wiring)	
Temperature	Working temperature: 0 $^{\circ}\text{C}$ to 50 $^{\circ}\text{C}$ (32 $^{\circ}\text{F}$ to 122 $^{\circ}\text{F}$) Storage temperature: -30 $^{\circ}\text{C}$ to 70 $^{\circ}\text{C}$ (-22 $^{\circ}\text{F}$ to 158 $^{\circ}\text{F}$)	
Humidity	20% to 80% RH, without condensation	
General		
Client software	MVS or third-party software meeting with USB3.0 Vision Protocol	
Operating system	32/64-bit Windows XP/7/10, 32/64-bit Linux	
Compatibility	USB3 Vision V1.0, GenICam	
Certification	CE, FCC, RoHS, KC	

HIKROBOT

Hangzhou Hikrobot Technology Co., Ltd.
No.399 Danfeng Road, Binjiang District, Hangzhou 310051, China.
en.hikrobotics.com

Copyright Hikrobot

Hangzhou Hikrobot Technology Co., Ltd. All Rights Reserved. Hangzhou Hikrobot Technology does not tolerate any infringement. Any organization or individual may not imitate or reproduce in whole or in part of the content. The data herein is based on Hikrobot's internal evaluation. Actual data may vary depending on specific configuration and operating condition. The information herein is subject to change without notice All the content has been checked conscientiously. Nevertheless, Hikrobot shall not be liable to damages resulting from errors, inconsistencies or omissions.