

4

3

2

1

[2.9]  
74  
Lighted Area

[71.25]  
1809.7

[0.193]  
R4.89

[2.75]  
69.85

[69.0]  
1753  
Lighted Area

[0.25]  
6.35

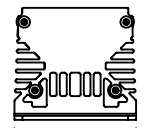
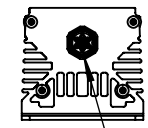
[0.39]  
9.78  
TYP

[70.25]  
1784.4

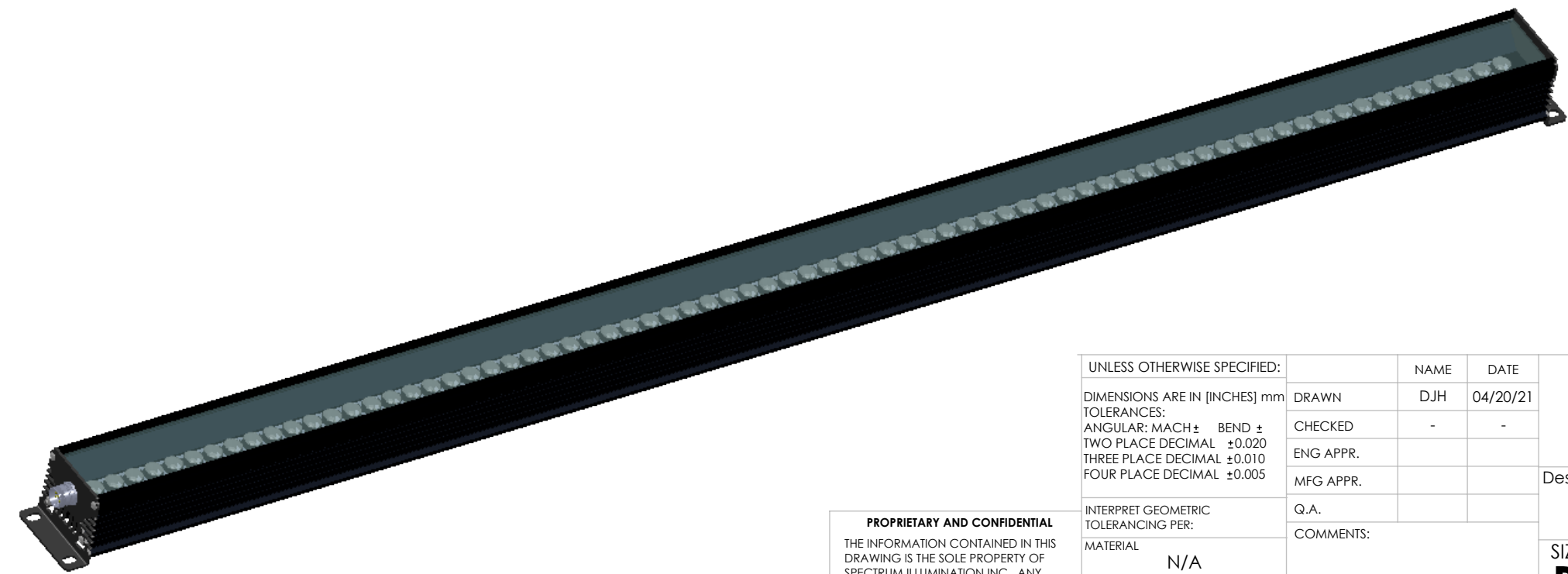
[72.25]  
1835.1

[0.13]  
3.18

[3.80]  
96.52



**WARNING!!!:**  
USE ONLY DESIGNATED  
S.I. DRIVER - DO NOT  
CONNECT TO 24V PS



UNLESS OTHERWISE SPECIFIED:		NAME	DATE
DIMENSIONS ARE IN [INCHES] mm		DRAWN	DJH 04/20/21
TOLERANCES:		CHECKED	-
ANGULAR: MACH ± BEND ±		ENG APPR.	
TWO PLACE DECIMAL ±0.020		MFG APPR.	
THREE PLACE DECIMAL ±0.010		Q.A.	
FOUR PLACE DECIMAL ±0.005		COMMENTS:	
INTERPRET GEOMETRIC TOLERANCING PER:			
MATERIAL	N/A		
FINISH	N/A		
DO NOT SCALE DRAWING			

**PROPRIETARY AND CONFIDENTIAL**  
THE INFORMATION CONTAINED IN THIS DRAWING IS THE SOLE PROPERTY OF SPECTRUM ILLUMINATION INC. ANY REPRODUCTION IN PART OR AS A WHOLE WITHOUT THE WRITTEN PERMISSION OF SPECTRUM ILLUMINATION INC IS PROHIBITED.

**SPECTRUM ILLUMINATION**  
5114 INDUSTRIAL PARK RD.  
MONTAGUE, MI 49437

Description:  
69" Linear Light

SIZE	DWG. NO.	REV
<b>B</b>	MLL169-XXX	<b>A</b>
SCALE: 1:6	WEIGHT:	SHEET 1 OF 1

4

3

2

1

B

B

A

A