

Mating Cable & Driver  
Supplied With Light  
(4 Meter)

4 x M5x0.8 [10-32 UNF]  
12.7 [0.500]  
Mounting Holes

[2.25]  
57.15

[1.500]  
38.100

[2.500]  
63.500

[3.00]  
76.20

[1.205]  
30.61

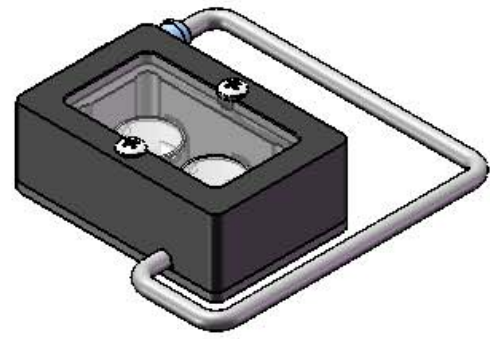
[1.125]  
28.58

[2.00]  
50.80

[2.00]  
50.80

Lighted Area

[1.00]  
25.40



Half Scale

**PROPRIETARY AND CONFIDENTIAL**  
THE INFORMATION CONTAINED IN THIS DRAWING IS THE SOLE PROPERTY OF SPECTRUM ILLUMINATION COMPANY INC. ANY REPRODUCTION IN PART OR AS A WHOLE WITHOUT THE WRITTEN PERMISSION OF SPECTRUM ILLUMINATION COMPANY INC. IS PROHIBITED.

UNLESS OTHERWISE SPECIFIED:		NAME	DATE
DIMENSIONS ARE IN MILLIMETERS / (INCHES)	DRAWN	DDM	1/13/2009
TOLERANCES:	CHECKED		
ANGULAR: MACH ± BEND ±	ENG APPR.		
TWO PLACE DECIMAL ±0.5mm	MFG APPR.		
THREE PLACE DECIMAL ±0.25mm	Q.A.		
INTERPRET GEOMETRIC TOLERANCING PER:	COMMENTS:		
MATERIAL	N/A		
FINISH	N/A		
DO NOT SCALE DRAWING			
<b>SPECTRUM ILLUMINATION</b> 5114 INDUSTRIAL PARK RD. MONTAGUE, MI 49437			
SIZE	DWG. NAME	REV	
<b>B</b>	MLL12 Complete	<b>A</b>	
SCALE: 1:1	WEIGHT:	SHEET 1 OF 1	