

LIMITLESS™

Hello Birdie™



Smart Bird Feeder
with App-Based Recognition

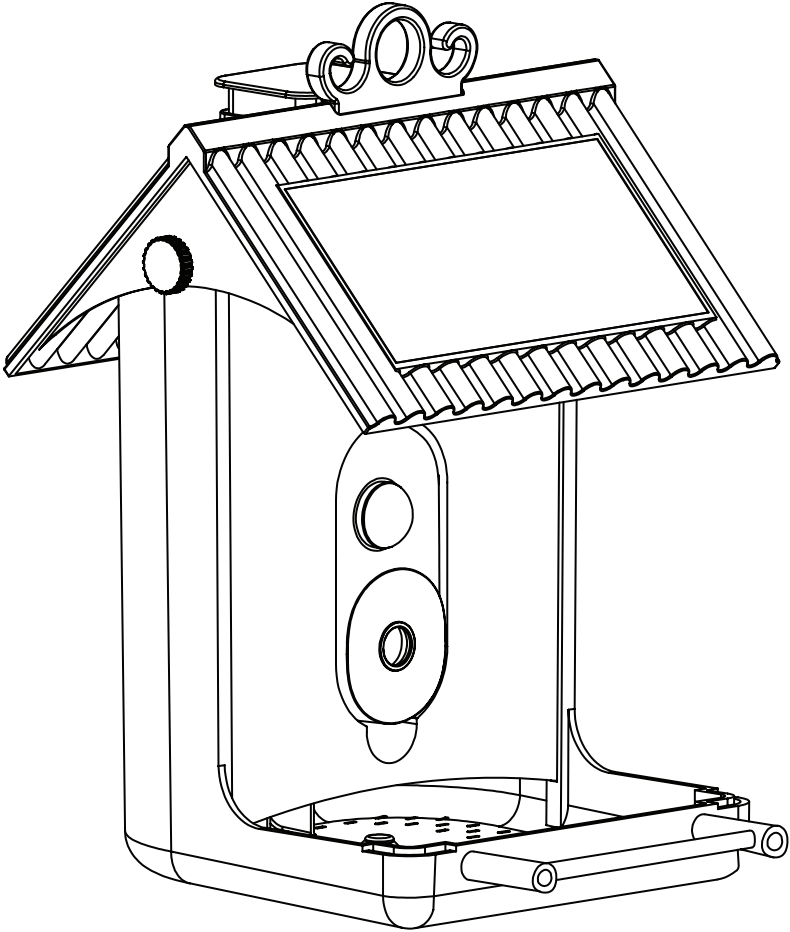
USER MANUAL

Table of Contents

What's Included	4
Components	6
Installing Mounting Bracket, Perch & Accessories	8
Getting Started	10
Download the App	11
Using the App	
Signing Up for an Account.....	12
Setting up the Camera.....	14
Troubleshooting Camera Setup.....	16
Learning the Features.....	18
Installing the Feeder	
Optimal Placement.....	24
Mounting Options.....	26
Charging the Camera	30
Adding Food to the Feeder	
Filling the Food Container.....	32
Using the Suet Ball Accessory.....	33
Using the Water Accessory.....	33
Disassembly & Cleaning	34
FAQs	35
Technical Specifications	
Product.....	38
Camera.....	39
Solar Panel.....	39
Limited Warranty	40
Copyright Notice	44

What's Included

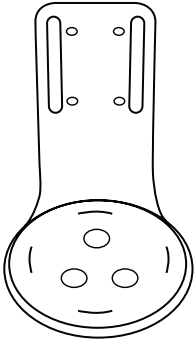
Pre-Installed



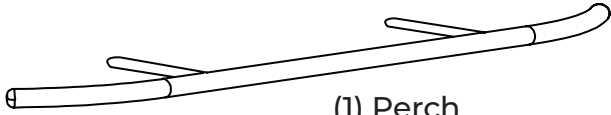
(1) Bird Feeder with Solar Panel

(1) HD Camera

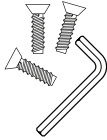
Accessories



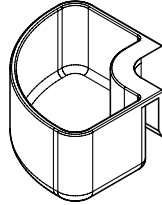
(1) Mounting Bracket



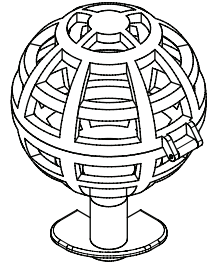
(1) Perch



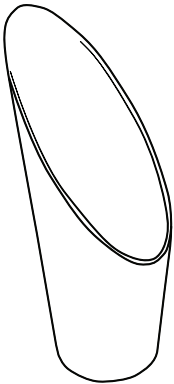
(1) Mounting Bracket Installation Hardware



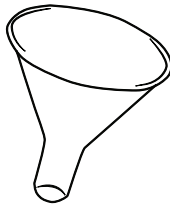
(1) Water Accessory



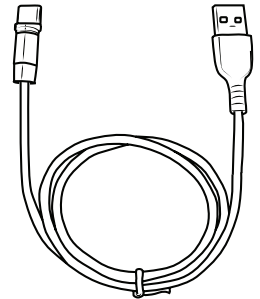
(1) Suet Ball Accessory



(1) Food Refill Scoop



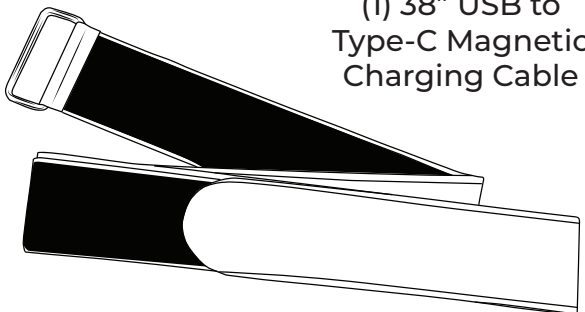
(1) Food Refill Funnel



(1) 38" USB to Type-C Magnetic Charging Cable



(4) Mounting Screws



(1) 6' Hook & Loop Mounting Strap

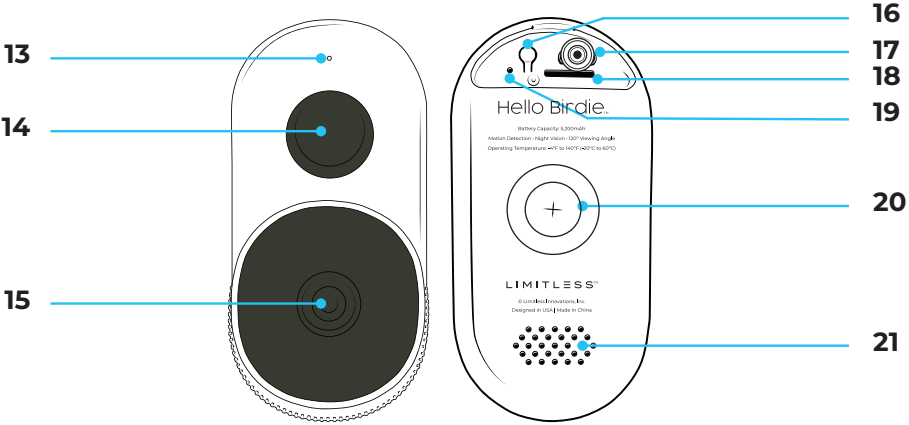
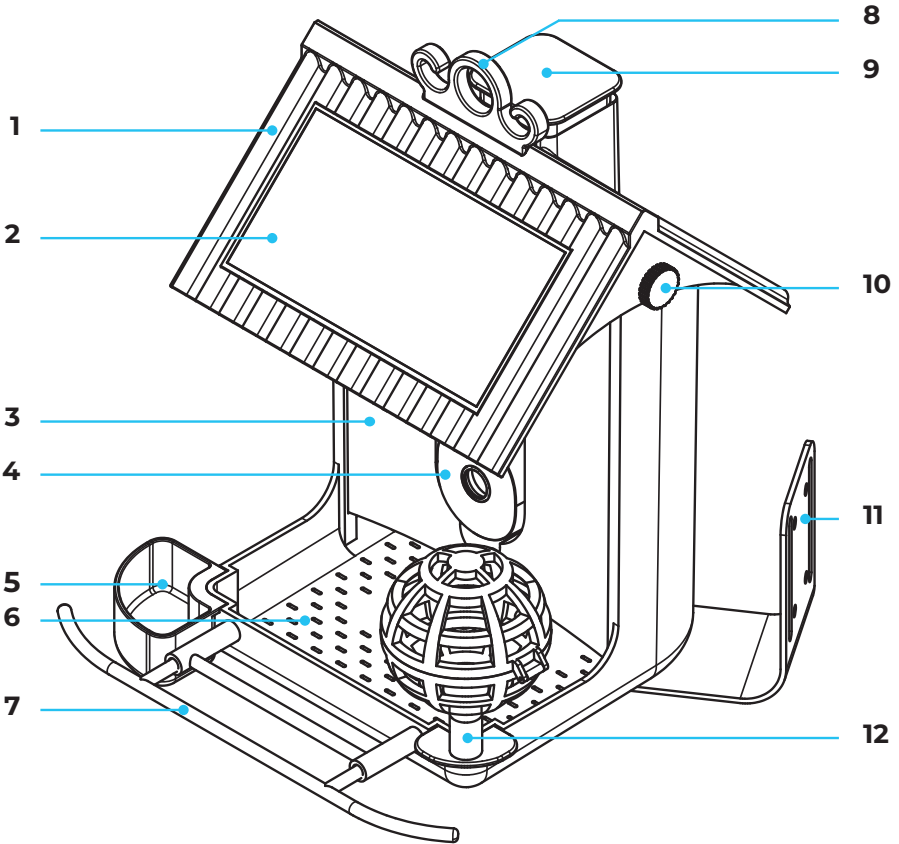
Components

Feeder

1. Roof/Cover
2. Solar Panel
3. Food Container
4. HD Camera
5. Removable Water Container
6. Food Base/Tray
7. Perch
8. Hanging Bracket
9. Chimney Cap | Food Refill Opening
10. Roof Attachment Screws
11. Mounting Bracket
12. Removable Suet Ball Holder

Camera

13. Microphone
14. Motion Sensor
15. Camera Lens
16. Power Button
17. Pre-Installed Type-C Magnetic Charging Tip in Charging Port
18. MicroSD Card Slot
19. Camera Reset
20. Magnet
21. Speaker



Installing Mounting Bracket & Accessories

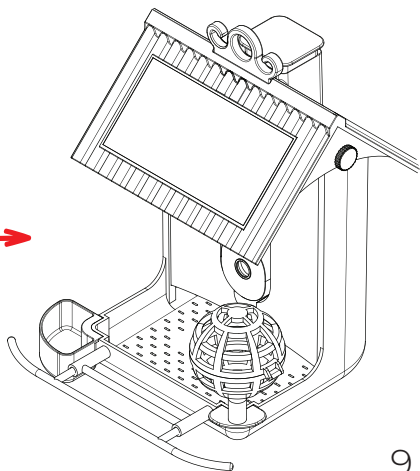
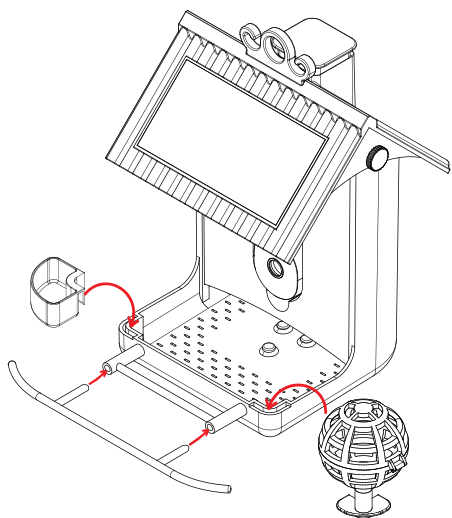
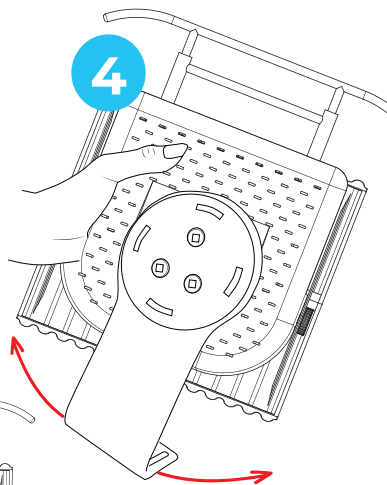
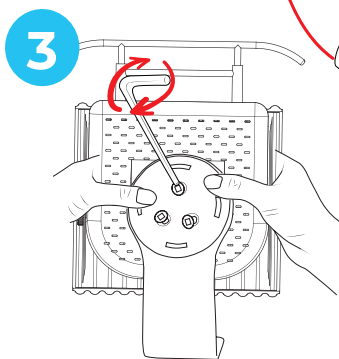
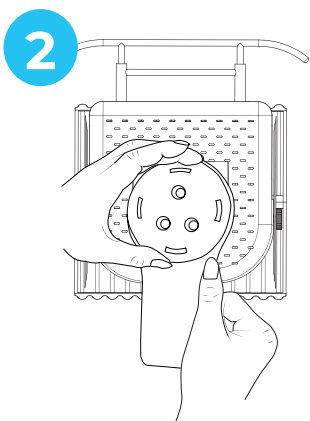
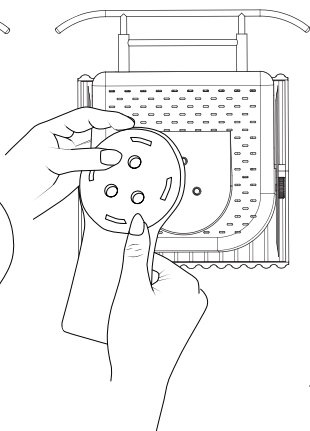
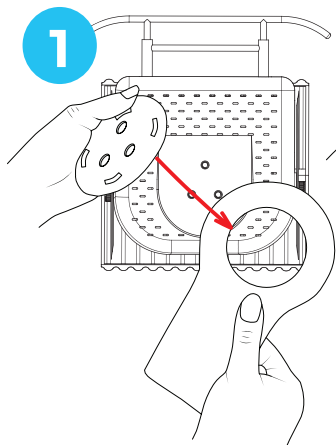
Installing Mounting Bracket

Attach the Mounting Bracket to the underside of the Feeder using the Mounting Bracket Installation Tools.

- 1.** Place the Mounting Brackets' round opening on the bottom of the feeder so the (3) threaded holes are in the center of the opening.
- 2.** Place the Mounting Disk over the Mounting Bracket so the threaded holes align with the holes on the Mounting Disc, and it locks in place.
- 3.** Use the (3) mounting screws and Allen key to fasten the Mounting Plate, Mounting Bracket and Feeder together. Do not over-tighten.
- 4.** The mounting bracket is now attached to the feeder, and able to swivel.

Installing Perch & Accessories

Attaching the Perch & Accessories is simple! Just press the Perch into the front holes, and slide Water Accessory and Suet Ball Accessory into the accessory slots as shown. Press the accessories down until everything is securely in place.



Getting Started

STEP 1: Download the App

The first step is to download the app! Just sign up for an account, connect the camera and get familiar with the app's features.

STEP 2: Install the Feeder

No matter the mounting method, be sure to choose a spot that receives ample sunlight so the camera receives power via the solar panel. Be sure to reference the optimal placement tips on page 24.

STEP 3: Fill it with Food

Depending on the time of year and the climate, there are many options out there for what to feed our feathered friends. Adding food to the Hello Birdie is easy! And don't forget to reference the included Feeding Guide to make the best food choices when considering the region and season.

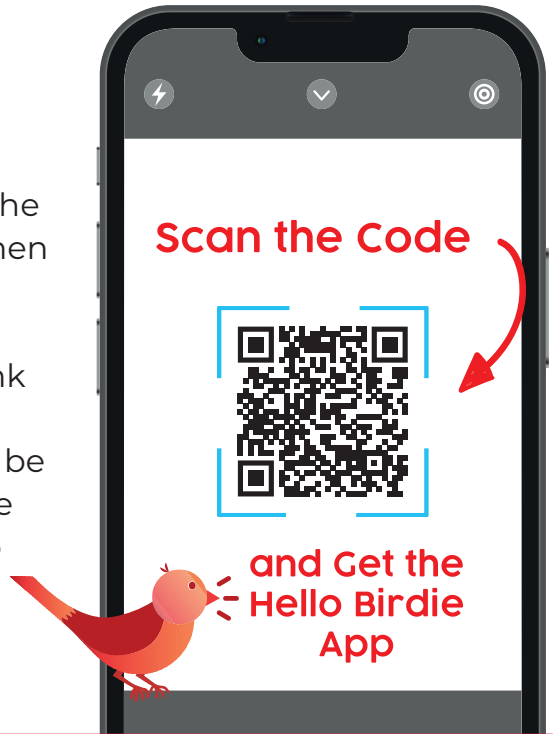
STEP 4: Tune in to See the Birds

The app will send push notifications to share when birds are at the Feeder and when a bird species has been identified!

Download the App

Scan the Code

Open the smartphone camera and hover over the QR code to the right. When the camera recognizes the QR code, a prompt will appear to visit the link associated with the QR code. Tap the prompt to be directed to the App Store and download the Hello Birdie App.



Hello Birdie.

Search the App Store

Another option for how to download the app is to simply search for it in the App Store.

Just type "Hello Birdie" into the search of the App Store, look for the app icon (shown to the left), and download the Hello Birdie App.

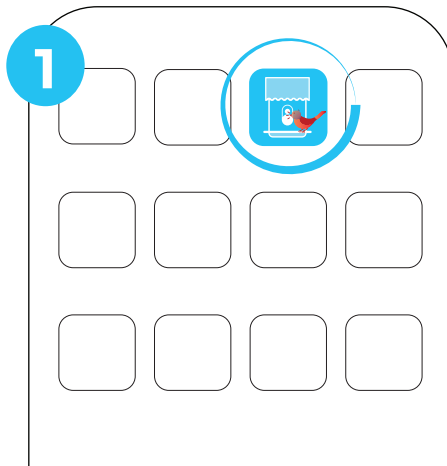


Using the App

Sign Up for an Account

Welcome to the Hello Birdie App! The first step to getting started with the Hello Birdie is to create a user account. Follow these steps to set up a user account.

1. Open the newly downloaded Hello Birdie App.
2. Tap **Sign Up** on the Log-In Screen.
3. Enter the preferred email address as the username, and then tap **Get a Code**. Retrieve the Code from the email address, and input into the **Enter Code** field. Tap the check box after acknowledging the User Agreement & Privacy Policy, then tap **Next**.
4. Set the password to be associated with the username. Complete the process by tapping **Sign Up**.
5. Use the newly created credentials to log in and get started!



2



Hello! Please Log In Below.

Username
Password

By logging in, you agree to the [User Agreement](#) & the [Privacy Policy](#).

Log In >

[Forgot Password?](#) | [Sign Up](#)

3



Sign Up

Enter email address	Get a Code
Enter code	

By logging in, you agree to the [User Agreement](#) & the [Privacy Policy](#).

Next >

4



Set Password

Enter Password
Confirm Password

Sign Up >

5



Hello! Please Log In Below.

Username
Password

By logging in, you agree to the [User Agreement](#) & the [Privacy Policy](#).

Log In >

[Forgot Password?](#) | [Sign Up](#)

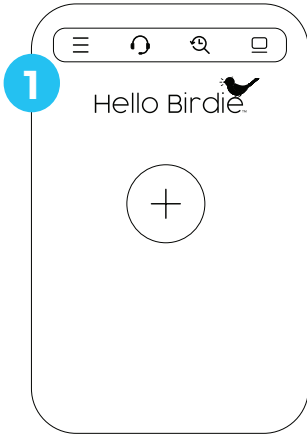
Using the App (continued)

Setting up the Camera

Once logged in, the next step is to set up the Camera. Follow the steps below to pair the Camera. Multiple Cameras can be set up using the same method.

1. Tap the **+** button in the center of the screen.
2. Power on the Camera. Listen to the voice prompts and wait for the red indicator light to flash. Once the Camera says to configure WiFi settings, the Camera is ready for pairing. Move to the next screen by tapping **Next**.
3. To connect to the router, choose the correct WiFi network* and add the WiFi password. Go to the next screen by tapping **Next**.
4. Use the camera to scan the QR code provided on the next screen. Once the camera's voice prompt says the Camera is being connected to the cloud server, the camera is connected. Go to the next screen by tapping **Next**.
5. Wait while the connection configures. Camera lights will flash blue during this process.
6. Once the Camera is added successfully, give it a name and tap **Complete**.
7. Start using Hello Birdie!

**Hello Birdie requires a 2.4GHz WiFi network.*



2 Power On and Reset the Camera

- 1 Power on the device**
Camera is powered on when blue indicator light is flashing.
- 2 Long Press the Reset Button**
Insert the Reset Pin into the Reset Button and wait for Camera to say **Reset Successful**.

Once Camera says **Please configure your WiFi settings**, tap the **Next** button below.

Next >

3 Select the Camera's WiFi Network

Enter the WiFi Network's log-in credentials and tap the next button.

Network Name

WiFi Password

Next >

5G cellular network is not supported on some devices

4 Scan the QR Code Below with the Camera

(between 4in - 6in from the phone screen)

Camera ready to connect to the cloud server

Next >

5 Configuring Network Connection

Please wait up to 2 minutes for the network to configure. If there is still a delay, try moving the camera and phone closer to the WiFi router.

6 Device Added Successfully!

Set the Camera Name and finish setup.

Device Name

Complete >

7

Hello Birdie™

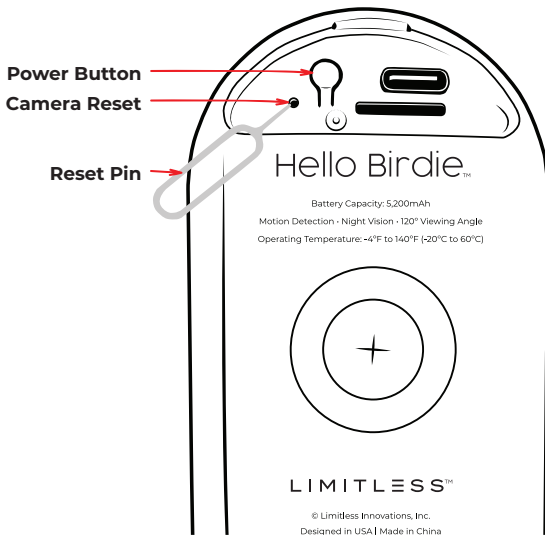
+

Using the App (continued)

Troubleshooting Camera Setup

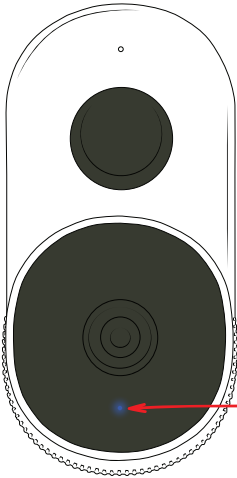
How do I reset the Camera?

Insert the included Reset Pin into the Camera Reset on the backside of the Camera. The pressure applied will make a slight click. Hold the Reset Pin in place until the Camera voice says **Reset Successful, please wait for the camera to reboot.** At this time, the Reset Pin should be removed.



I've moved my Hello Birdie to a new WiFi Network, do I need to set up the connection again?

If the Feeder is moved to a different location that has a new WiFi network, the Camera will need to be reconfigured to this network. Follow the setup instructions on p.14.



How do I know if the Camera is powered on?

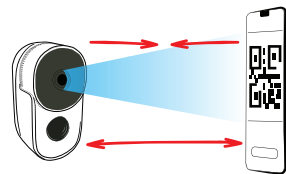
When the Camera is powered on, the blue indicator light on the front of the camera will illuminate. If the light isn't on, press and hold the Power Button for 3-5 seconds until the light comes on.

Power Indicator Light

How do I scan the QR code?

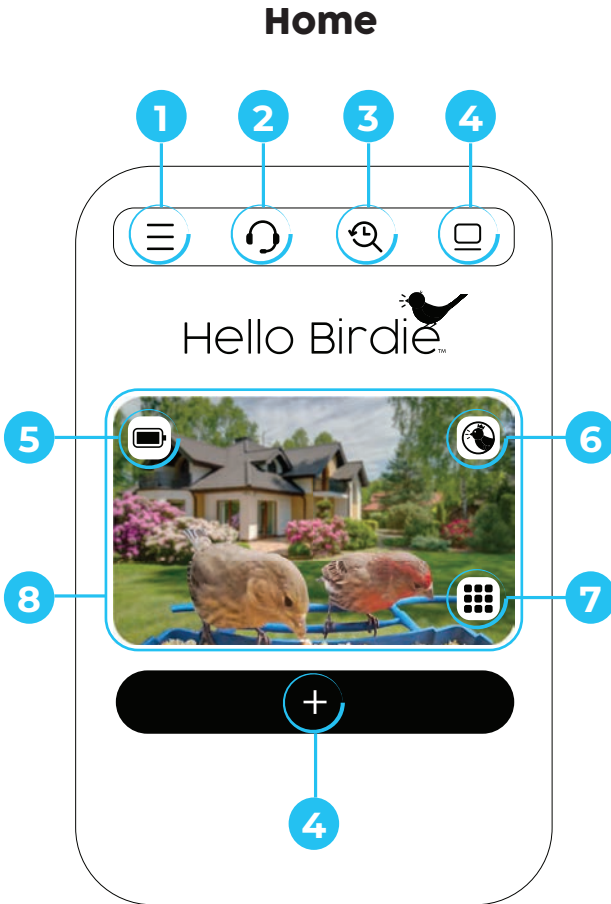
The Camera needs to recognize and scan the QR code in order to complete the setup process. Hold the Camera lens-side up in one hand and the phone with the QR code facing the camera lens in the other hand. It's helpful to slowly move them closer and further apart from one another until the code is read by the camera. The sweet spot is between 4-6 inches.

Reminder: It's the Camera that is scanning the QR Code from the phone screen.



Using the App (continued)

Learning the Features



- | | |
|--------------------------|--|
| 1. App Menu | 5. Camera Battery Life |
| 2. Help & Support | 6. Paid Plan Features |
| 3. Alert History | 7. Camera Options |
| 4. Add Camera | 8. Tap anywhere to see Live Camera Stream |

Camera Options

Alert History –

Recount all alerts: Motion detected, Bird Found, Bird Identified.

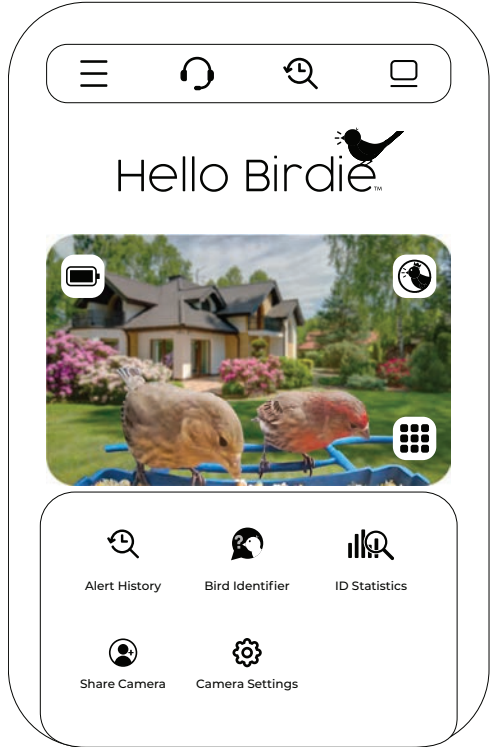
Bird Identifier –

Upload pictures to identify birds.

ID Statistics – See how many of a specific bird species has visited the Feeder.

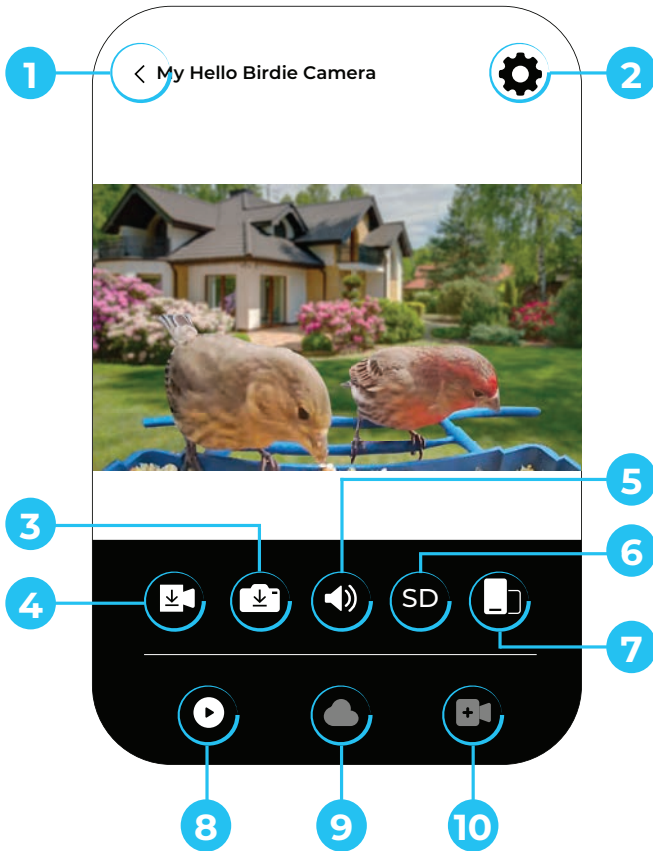
Share Camera – Add friends & family so they can watch along as well.

Camera Settings – Configure settings like notifications, image quality, and check the battery level.



Using the App (continued)

Live Camera Stream



- | | |
|--------------------|--------------------------|
| 1. Back to Home | 6. Camera Quality |
| 2. Camera Settings | 7. Screen Orientation |
| 3. Download Image | 8. Live Camera Stream |
| 4. Download Video | 9. Cloud Timeline |
| 5. Sound On/Off | 10. Stored Data Timeline |

ICON DEFINITIONS

Back to Home – Use this arrow to go back to the Home screen.

Camera Settings – Configure settings like notifications, image quality, and membership options.

Download Image – Press this button to download the current camera shot to the phone's photo gallery.

Download Video – Press this button to start recording, press again to stop recording. After it stops recording, the video will automatically download and save to the phone's photo gallery.

Sound On/Off – Turn the microphone off/on by tapping this icon.

Camera Quality – Choose Standard or High Definition picture quality display.

Screen Orientation – Switch between portrait and landscape view on the phone screen.

CAMERA VIEWS

The icon of the view that is selected appears in white.

Live Camera Stream – Shows what's going on at the Feeder in real time.

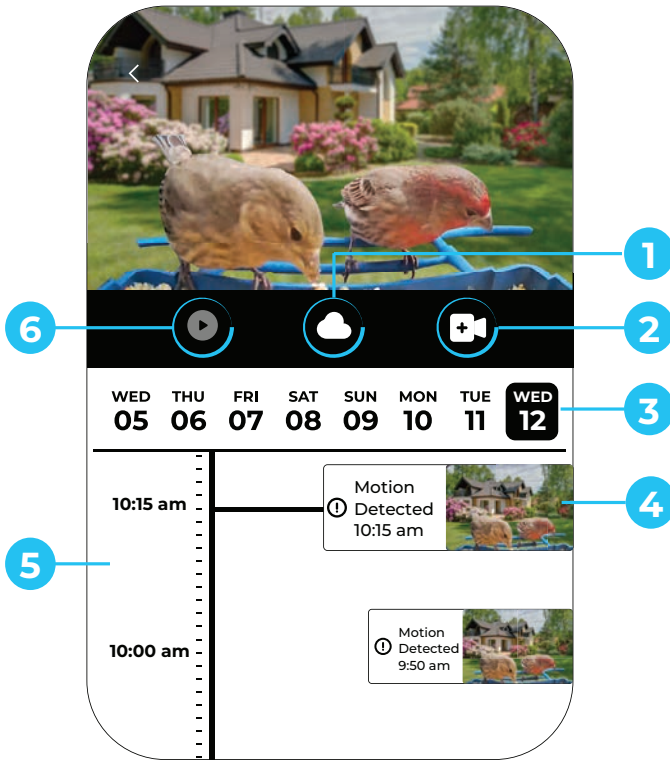
Cloud Timeline – Shows the history of the data being stored on the cloud.

Stored Data Timeline – Shows the history of the data being stored on the external microSD Card (not included).

Using the App (continued)

Timeline View

There are two Timeline Views: Cloud Timeline & Stored Data Timeline. The screen for the timeline functions the same, and are selected by tapping on the appropriate icon. While the microSD Card (not included) is in use, the Cloud Timeline will not show any data.



1. Cloud Timeline
2. Stored Data Timeline
3. Day Selection
4. Detected Alert
5. Scroll the Timeline
6. Back to Live Camera Stream

Cloud Timeline – Shows the history of the data stored on the cloud. When this view is selected, it will show in white.

Stored Data Timeline – Shows the history of the data being stored on the external microSD card (not included). When this view is selected, it will show in white.

Day Selection – Selected day is highlighted and displays alerts for that day in the timeline below.

Detected Alert – Displays all alerts detected by the camera: Motion Detected, Bird Detected, Bird Identified, Predator Alert.

Scroll the Timeline – Scroll up and down the timeline to view all of the alerts and their details.

Back to Live Camera Stream – Shows the view of the Camera in real time.

Learn More

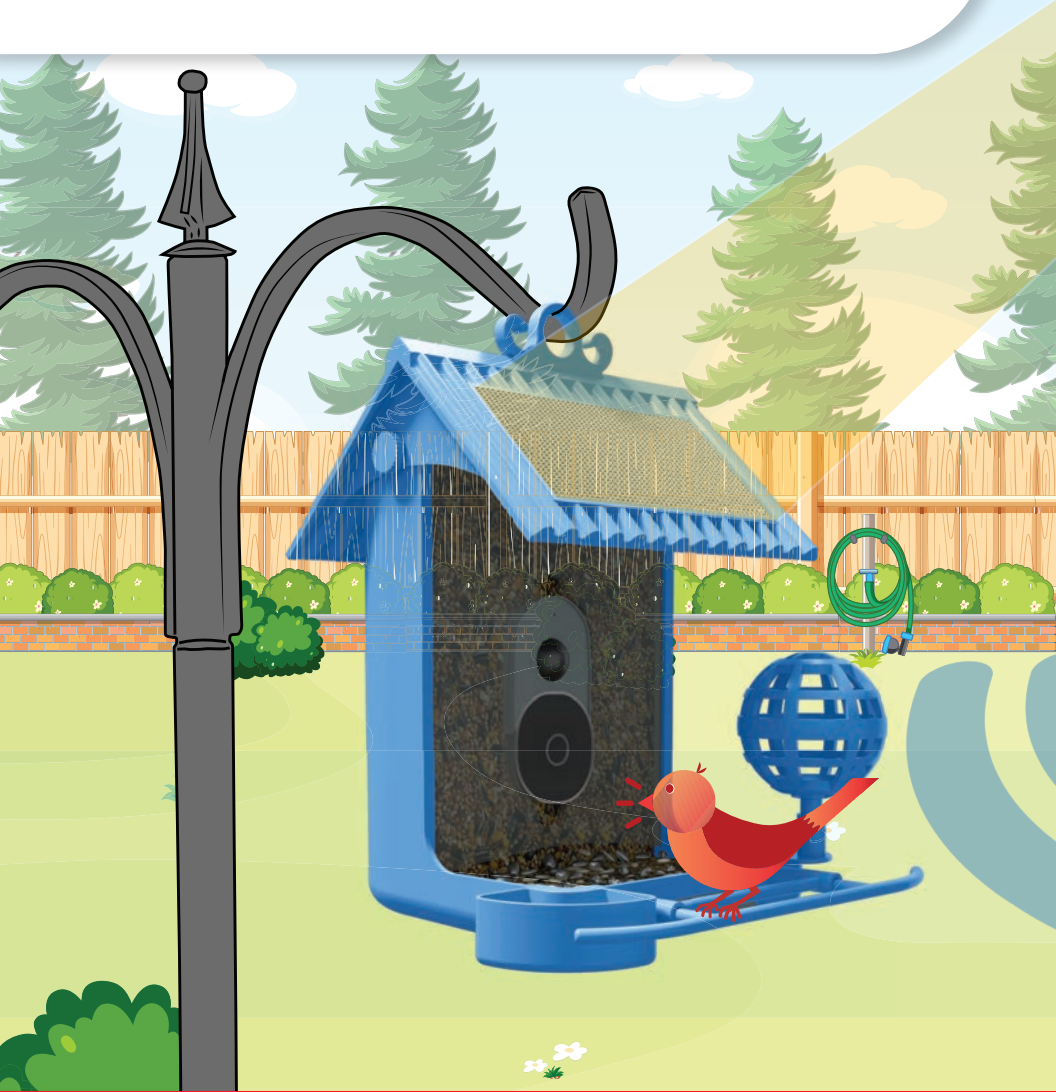
Visit the full customer support website to watch videos, read more instructions & learn more extensively about the Hello Birdie App and its features.

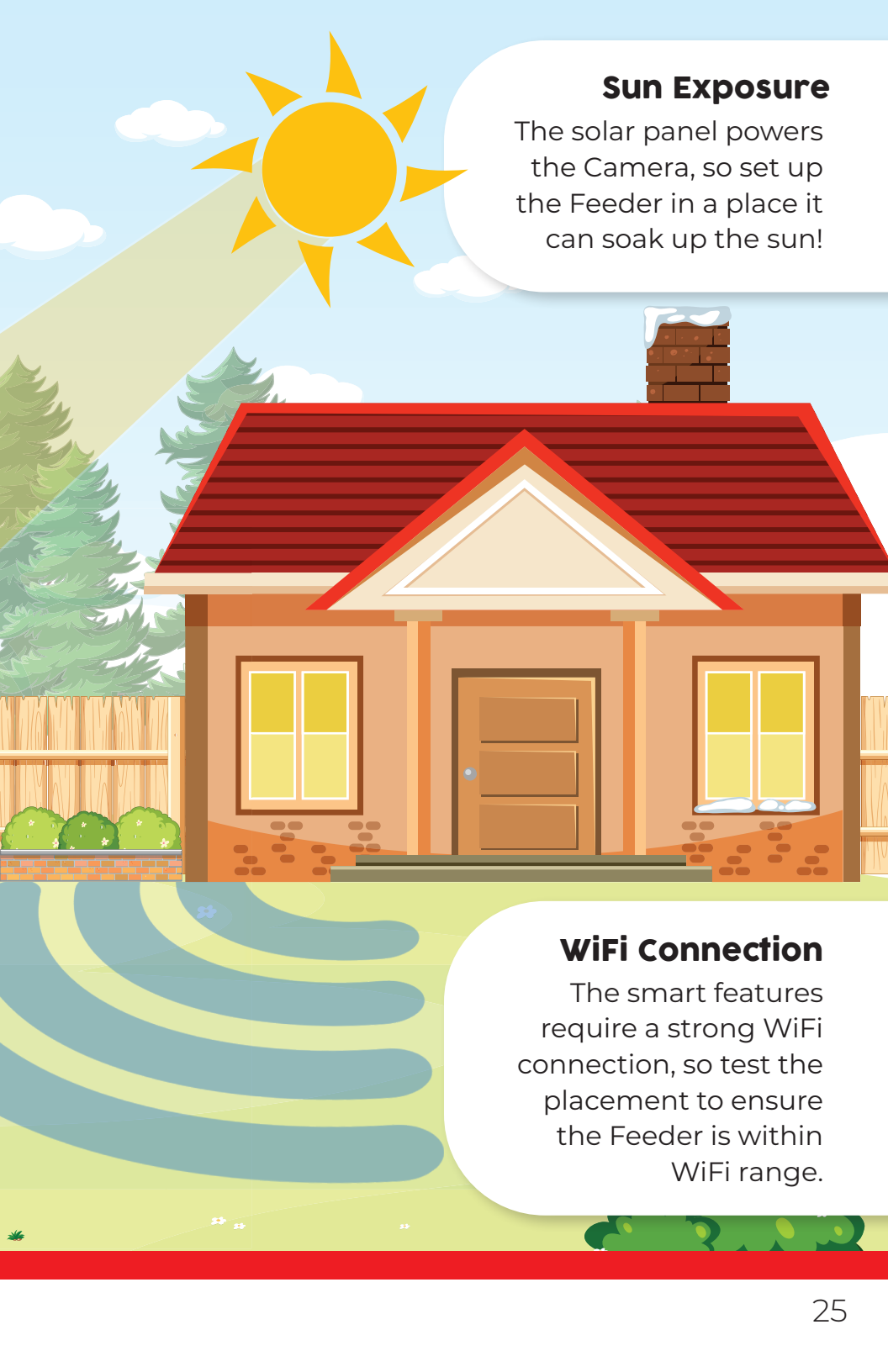


Installing the Feeder

Optimal Placement

Where the feeder is installed is important to get the most out of the Hello Birdie's features.





Sun Exposure

The solar panel powers the Camera, so set up the Feeder in a place it can soak up the sun!

WiFi Connection

The smart features require a strong WiFi connection, so test the placement to ensure the Feeder is within WiFi range.

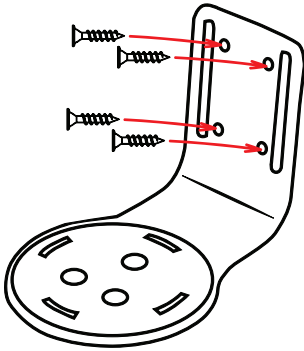
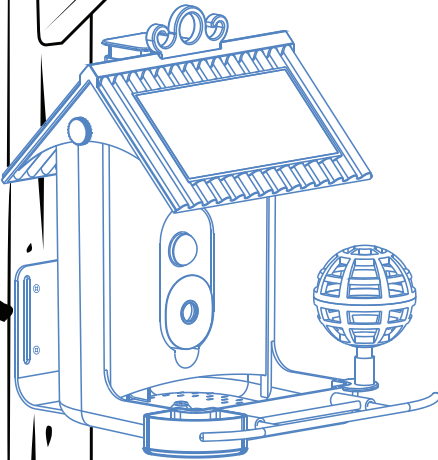
Installing the Feeder (Continued)

Mounting Options

After the Camera is connected to the App, the next step is to mount the Feeder! There are three options for mounting the Hello Birdie. Choose the method that will allow for ample sun exposure and a strong WiFi connection.

Mount with Screws

Use the 4 Mounting Screws (included) to attach the Mounting Bracket to a surface.

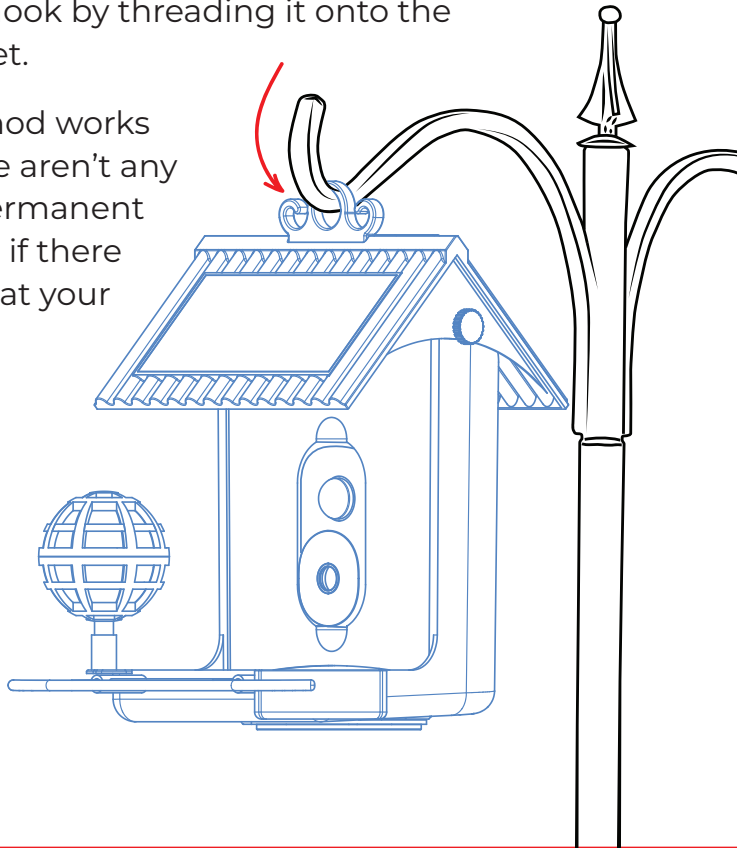


Using this method works best with wooden posts, mounting directly onto a structure (house, garage, shed, etc), and trees that are too large to mount using the Hook & Loop Mounting Strap.

Mount Using Hanging Bracket

Use a shepherd's hook (not included) – firmly planted in the ground – and hang the Feeder on the hook by threading it onto the Hanging Bracket.

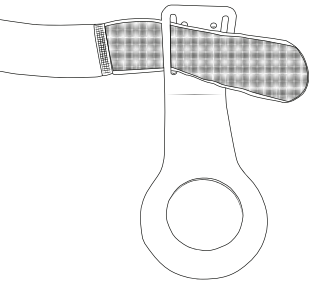
Using this method works best when there aren't any trees, for less permanent placement, and if there aren't any tools at your disposal.



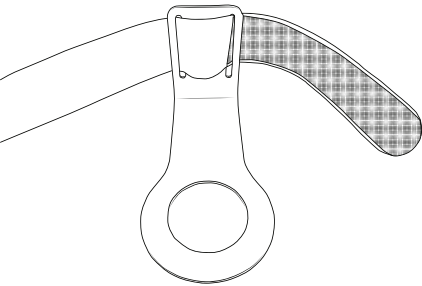
Installing the Feeder (Continued)

Mount Using Hook & Loop Mounting Strap

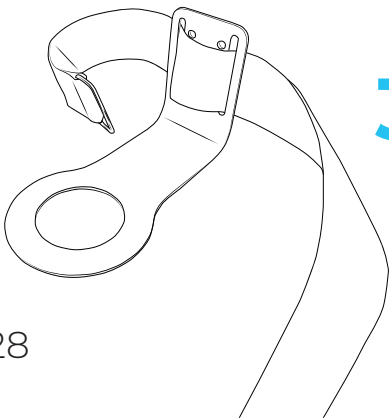
Mount to a tree trunk by following the instructions of adding the Hook & Loop Mounting Strap to the Mounting Bracket.



- 1** Feed the hook end (rough side) of the Strap through the back to the front of the Mounting Bracket.

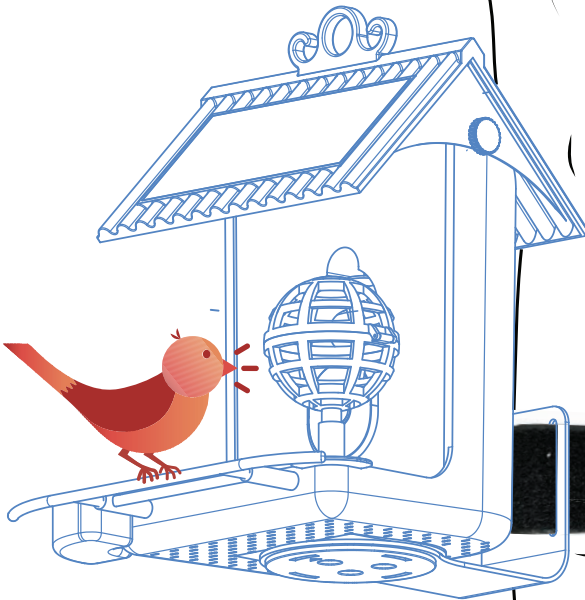
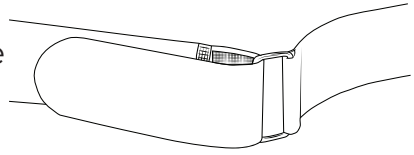


- 2** Weave the Strap through to the back of the Mounting Bracket.



- 3** Pull the Strap through the Mounting Bracket, closer to the buckle end.

- 4** Fold the hook end of the Strap back onto itself after threading through the buckle to securely fasten.

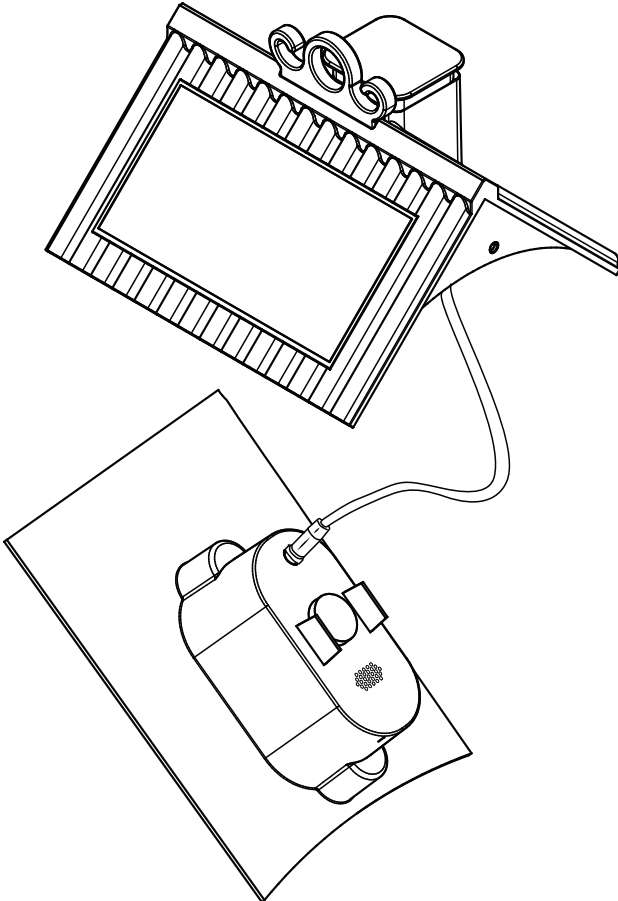


Using this method is best for small to medium sized trees with direct sun exposure. This method is also useful for attaching to both wooden and non-wooden posts.

Charging the Camera

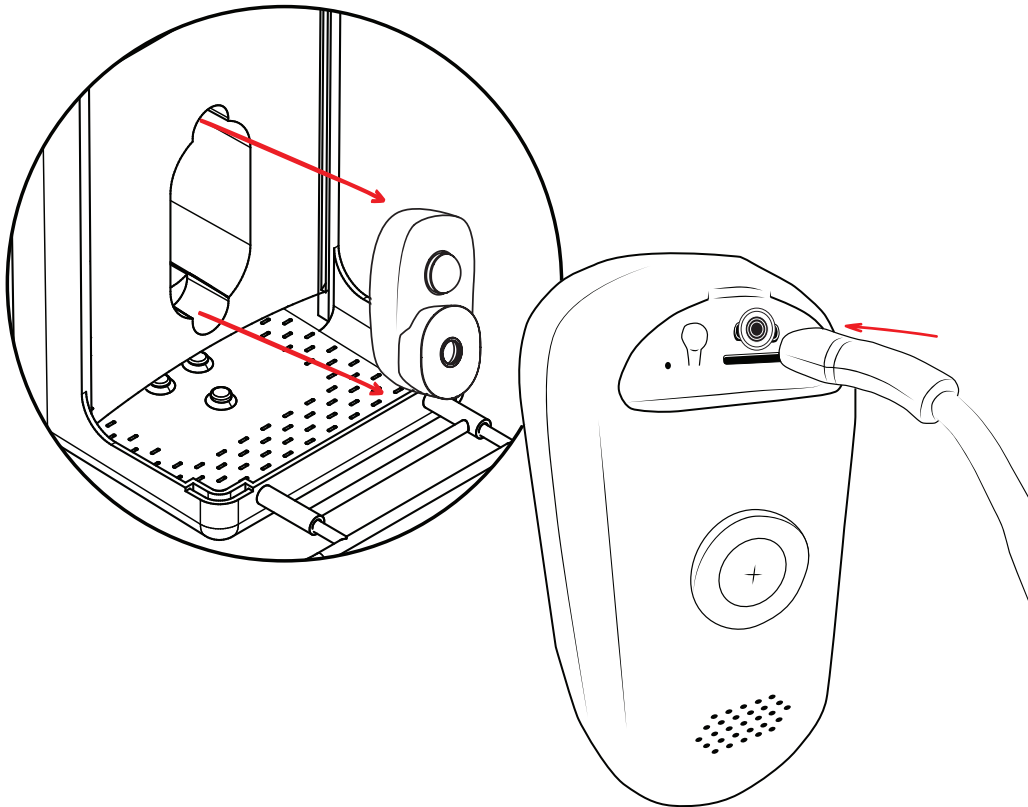
Solar Panel Charging

The Solar Panel roof is designed to provide extended battery life to the Hello Birdie Camera. As the Solar Panel gathers energy, the battery of the Camera will have a constant source of power. The charging cable is fixed into the back of the Camera Slot, and the Camera connects via a magnet to charge. This allows for easy Camera removal.



Traditional Charging

There are times it may be necessary to charge the Camera away from the Feeder. Remove the Camera from the Hello Birdie by pulling it out of the Camera Slot. To recharge, use the included Type-C Magnetic Charging Cable and any USB power source (i.e. a wall adapter, computer USB port, etc. – not included). Attach the magnetic end of the included cable onto the Charging Magnet on the back of the Camera. The Camera will begin to charge.

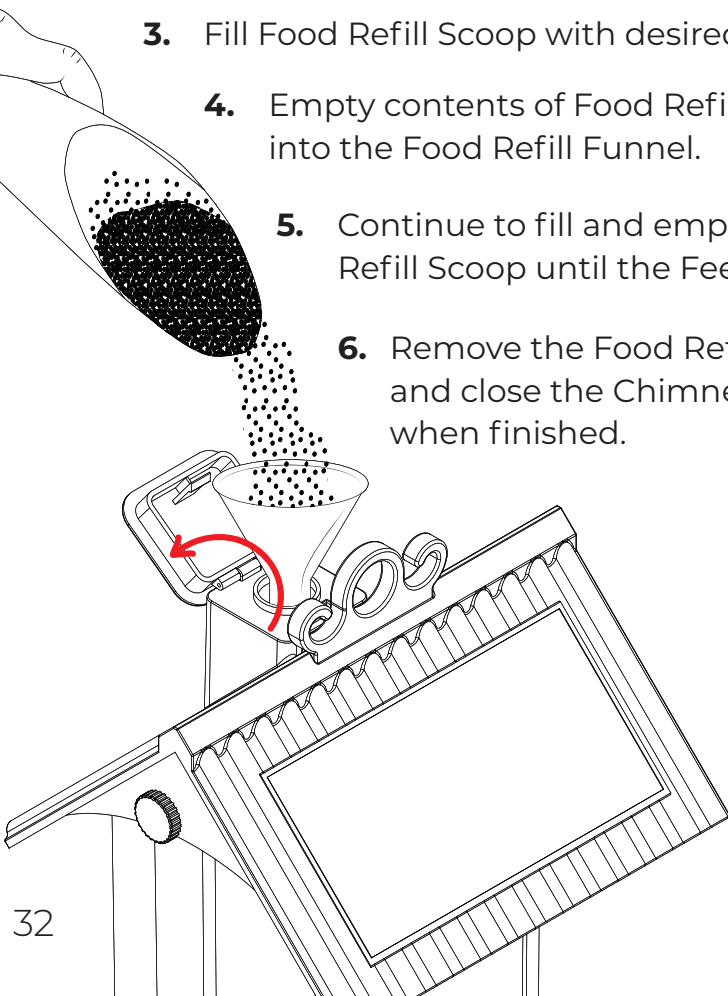


Adding Food to the Feeder

Filling the Food Container

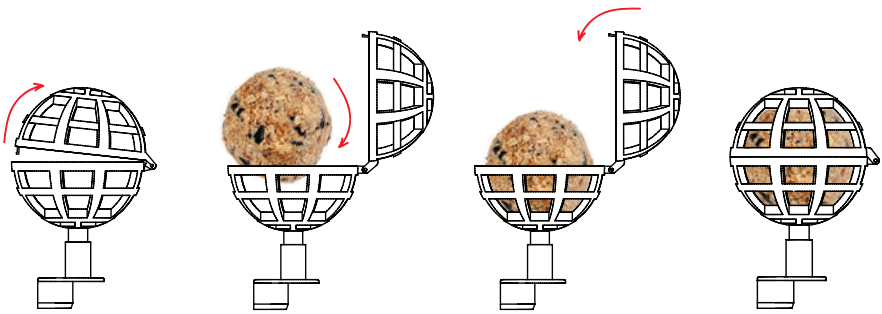
Use the included Food Refill Scoop and Food Refill Funnel to add feed to the Hello Birdie Feeder.

1. Open the Chimney Cap to expose the Food Refill Opening.
2. Insert the end of the Food Refill Funnel into the Food Refill Opening.
3. Fill Food Refill Scoop with desired bird food.
4. Empty contents of Food Refill Scoop into the Food Refill Funnel.
5. Continue to fill and empty Food Refill Scoop until the Feeder is full.
6. Remove the Food Refill Funnel and close the Chimney Cap when finished.



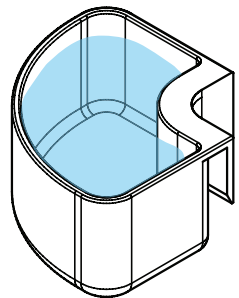
Using the Suet Ball Accessory

Add a suet ball to the Suet Ball Accessory by opening the lid. Place the suet ball inside the basket of the Accessory, then snap the lid closed.



Using the Water Accessory

Supply the birds with water by filling up the included Water Accessory with fresh H₂O.



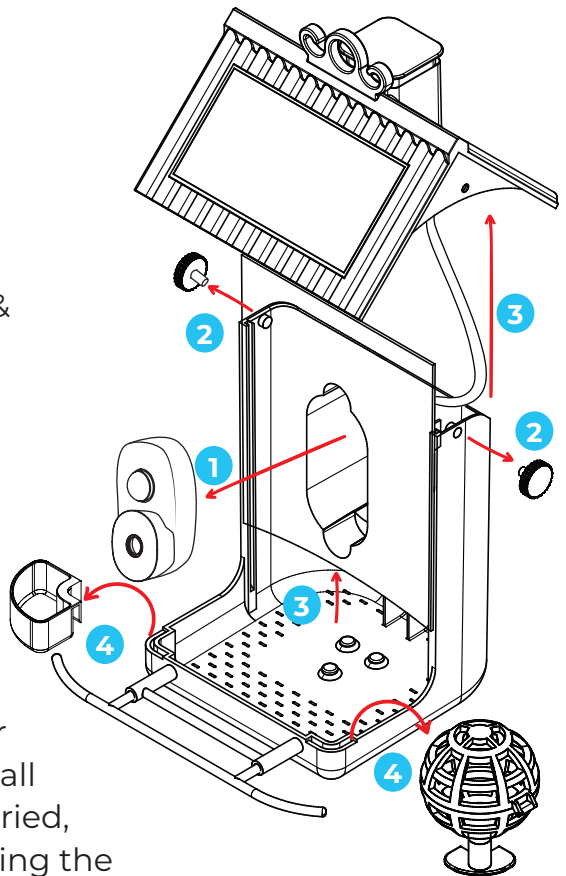
Disassembly & Cleaning

Disassembling the Feeder

Whether it's to store the Feeder away for the season or just to freshen it up when switching feed types, taking it apart is the best way to get every piece of the Feeder clean. This diagram shows how to remove all pieces from the base.

Order of Removal

1. Camera
2. Roof Attachment Screws
3. Solar Panel Roof & Plexiglass Panel
4. Accessories



Cleaning the Feeder

To clean the Feeder, simple soap and water will do the trick. Once all pieces are clean and dried, proceed with assembling the Feeder or storing for the season.

FAQs

Can I share my Hello Birdie Camera with friends and family?

Yes! And sharing the camera is very easy – just make sure your friends and family have also downloaded the app and created a user account. Once they've created an account, just navigate to Camera Options > Share Camera to enter their email address. Share with up to 11 other Hello Birdie users!

Is Hello Birdie weatherproof?

Yes! The Hello Birdie has a rating of IP65 – which means it is totally protected against dust and protected against low pressure jets of water from all directions, but not intended to be submerged.

What makes the Hello Birdie a smart bird feeder?

The Hello Birdie App is equipped with artificial intelligence software. As birds visit the Feeder, the Camera captures images that are then run through the app's software to identify them!

Does the Hello Birdie need WiFi?

100% – Without a strong WiFi connection, the Hello Birdie's smart features will not work properly.

Where does my data go?

Your Feeder activity is stored on cloud if there isn't a microSD Card (not included) installed. When you visit the Alert History or a Timeline view, you can download the activity directly to your phone!

FAQs (continued)

How does the camera stay charged?

While the camera is installed, it is connected to the solar panel as a source of power. This supplies a steady stream of energy, but the camera may still need to be charged away from the Feeder (i.e. inclement weather with cloud coverage). In this case, it can be charged indoors with the included Type-C Magnetic Charging Cable (see p.30 - p.31 for instructions).

How long will the battery last?

A device without a solar panel will last 1-2 weeks without a charge, depending on how active it is. Feeders with a solar panel can go for weeks, months or even more without having to charge - depending on the climate and conditions!

Do I need to go through camera setup if I move my Hello Birdie?

If the Feeder is moved to a different location that has a new WiFi network, the Camera will need to be reconfigured to this network. To do this, just refer to the p.14 for Camera Setup instructions.

What if the bird recognized by the AI software is incorrect?

This software's database is built up by the community, and is only made better by those that engage with it actively. When you notice a bird is incorrectly identified, simply tap the **Inaccurate?** link on the Identification Details page. If you know the species, enter that information and submit!

How does AI bird detection work?

Hello Birdie's camera module is automatically activated when birds land on the Feeder. Once it takes photos and videos of your feathered visitors, those images are run through our machine learning model to recognize and sort the species. The best images and videos are then curated and sent as postcards directly to your app!

Why is my Hello Birdie offline?

If your Hello Birdie reports that it is offline, this means the camera module is no longer communicating with your internet access point or that it lost the connection temporarily. You can try swiping down on the settings screen a few times to refresh the Feeder status to see if it's reconnected. If problems still occur, double check your WiFi Network connection.

What kind of microSD Card works with the Camera?

If you do elect to use a microSD card, the Camera is **only** compatible with 32GB microSD cards.

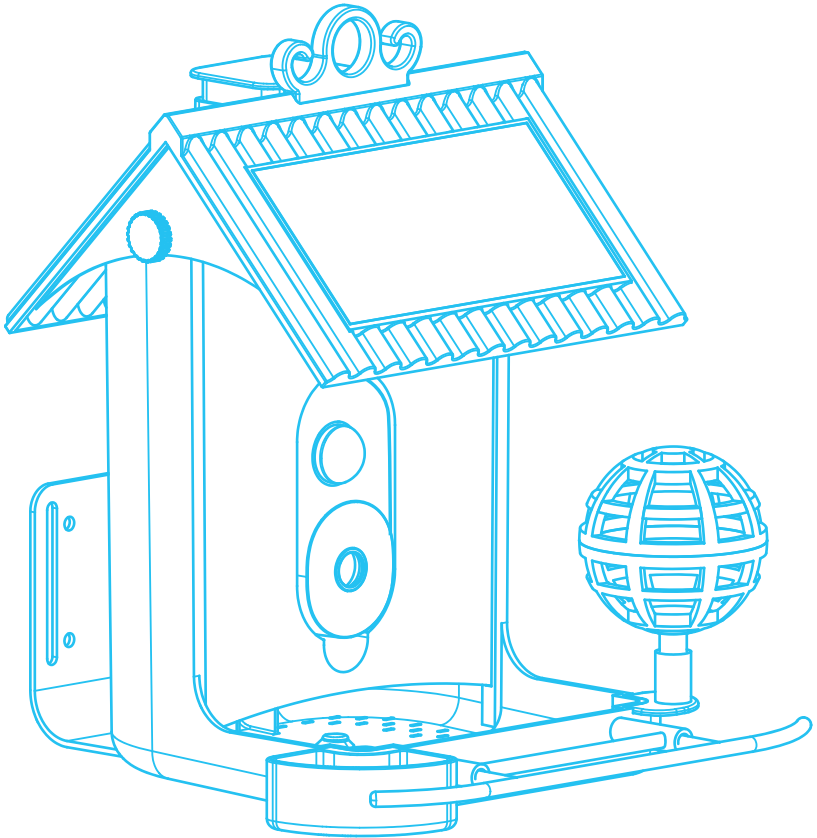
What happens when the microSD Card is full?

When the card is full, the oldest data is overridden by new data, so you never miss a moment of what's happening. It's suggested to frequently save videos and photos manually to your phone's photo gallery so you can look back on your visitors whenever you'd like!

Technical Specifications

Feeder

Product Model	LIM-HBIRDIE-XXX
Weather Resistant	IP65
Main Material	ABS
Seed Capacity	1.5L
Product Dimensions	9.65 in L x 9.7 in W x 12.2 in H
Weight (empty)	1.8 lbs



Camera

Audio Format	G711A
Motion Detection	Enabled
Battery Life	Varies based on usage
Battery Capacity	5,200mAh
Resolution	1080p HD
Viewing Angle	120°
Night Vision Range	16 ft
Wireless Connection	2.4G WiFi
Operating Temperature	-4°F to 140°F (-20°C to 60°C)
Operating Humidity	10%~80% (non-condensing)
Charging Time (from 0%)	±4.5 hours
Charging Options	Solar Roof, Type-C Cable

Solar Panel

IPCE	19.5%
Working Voltage (Vmp)	5V
Working Current (Imp)	340MA
Open Circuit Voltage (VOC)	6V
Short-Circuit Current (ISC)	360MA
Dimensions	6 in L x 3 in H

Limited Warranty

Your use of the product shall at all times require you to comply with all terms, conditions of use, instructions and recommendations set forth within this User Manual and the Limitless Terms and Conditions found at:

Warranty Terms and Conditions: LimitlessInnovations.com/Warranty

Are you having issues with your Limitless™ product?

We stand behind each product with a (1) Year Limited Warranty by Limitless Innovations.

Contact our support team today at:

LimitlessInnovations.com/Support
Support@LimitlessInnovations.com
(855) 843-4828

Subject to the exclusions contained below, Limitless Innovations, Inc. (“Limitless”) warrants the Limitless product to be free from defects in materials and workmanship under normal consumer usage for a period of one (1) year from the date of original purchase, (the “Limited Warranty”). As utilized herein, the term “Hello Birdie™” (or the singular, Limitless product) shall include all products set forth above in the What’s Included section of this User Manual that may be sold by Limitless now or in the future.

This Limited Warranty is a consumer’s sole and exclusive remedy regarding any express warranty claim by a consumer and is subject to the exclusions on the following pages:

Exclusions: The Limited Warranty shall not apply in the event of the occurrence of any of the following:

1. Normal Wear and Tear. The Limited Warranty shall not apply to cover the maintenance, repair and/or replacement of parts or the Limitless products due to normal wear and tear by the consumer.

2. Abuse and Misuse. The Limited Warranty shall not cover defects or damage that result in whole or in part from: (a) improper operation, storage, misuse or abuse, accident or neglect

by the consumer (including, without limitation, physical damage, cracks and scratches to the surface of the Limitless product; (b) contact with liquid, water, rain, extreme humidity or heavy perspiration, sand, dirt or the like, extreme heat, or food; (c) use of the Limitless product for commercial purposes; (d) subjecting the Limitless product to abnormal usage or conditions; and/or (e) other acts which are not the sole and absolute fault of the Limitless product.

3. Unauthorized Service or Modification. The Limited Warranty shall not cover defects or damages resulting in whole or in part from service, testing, adjustment, installation, maintenance, alteration, or modification in any way by someone other than Limitless or its authorized service centers.

4. Altered Products. The Limited Warranty shall not cover defects or damages to a Limitless product with (a) serial numbers or date tags that have, at any time, been removed, altered, or obliterated; (b) broken seals or that show evidence of tampering; (c) mismatched board serial numbers; or (d) non-conforming or non-Limitless housings, or components.

5. Communication Services. Defects, damage, or the failure of the Limitless products due to any communication service or signal you may subscribe to or use with the Limitless product or software.

WHO IS COVERED?

This warranty extends only to the first consumer purchaser and is not transferable to any third party nor applicable to any subsequent owner other than the first consumer purchaser.

WHAT WILL LIMITLESS DO?

If Limitless determines, in its sole and absolute discretion, that a claim is subject to the Limited Warranty, it will, at its sole option, repair or replace the Limitless product or alternatively, it will, in its discretion, refund the purchase price of any Limitless products or software. The Limitless product replacement will be with a functionally equivalent reconditioned / refurbished / pre-owned or new Limitless product or part.

Limited Warranty (Continued)

For additional information, visit us at:
LimitlessInnovations.com/Support
Support@LimitlessInnovations.com
(855) 843-4828

WHO DO I CONTACT TO MAKE A CLAIM?

In the event of any warranty claim under the Limited Warranty, you can contact the telephone number below or provide a written correspondence to the address below at which time and in response thereto, you will receive instructions on how to ship any Limitless product at your expense, to a Limitless authorized repair center.

To obtain service, you must include: (a) a copy of your receipt, bill of sale or other comparable proof of purchase; (b) a written description of the problem; (c) the name of your service provider, if applicable; and (d) your mailing address, email address and telephone number.

Mailing Address

(Please call (855) 843-4828 first to obtain RMA #)

Limitless Innovations, Inc.
4800 Metalmaster Way
McHenry, IL 60050

WHAT OTHER LIMITATIONS ARE THERE?

Any warranty claim shall be limited to Limitless cost of material on the Limitless Product determined to have a manufacturer's defect. In no event shall Limitless be liable to any party for any labor costs or any other direct, indirect, consequential, incidental or special damages, whether in contract or tort and Limitless expressly disclaims liability for any damages of any kind arising under any theory of law whatsoever. The performance of the Limitless Product depends on the purchaser's adherence to manufacturer product instructions and Limitless will not be responsible to purchaser for any deviations therefrom. Some states do not allow the exclusion or limitation of incidental or consequential damages, so the above limitation or exclusion regarding incidental or consequential damages may not apply

to you. All implied warranties, including, without limitation, the implied warranty of merchantability and the implied warranty of fitness for a particular purpose shall expire on date of first purchase of the Limitless Product by the consumer. Some states do not allow limitations on how long an implied warranty lasts, so the above limitation may not apply to you. With respect to that period of time beyond the Limitless 1 Year Limited Warranty period, Limitless disclaims and further makes no warranty of any kind, express or implied, including but not limited to, any warranty of merchantability or warranty of fitness for a particular purpose.

Please note this Limitless Limited Warranty gives you specific legal rights, and you may also have other rights which vary from state to state.

NATIONAL STATUTORY RIGHTS

Consumers in some jurisdictions may have legal rights under applicable national legislation governing the sale of consumer goods, including without limitation, national laws implementing EC Directive 99/44. These rights are not affected by the warranties in this limited warranty.

For the full Warranty, Terms, and Conditions, please visit:

LimitlessInnovations.com/Warranty

Copyright Notice

All rights reserved. Limitless™, Hello Birdie™, and Limitless Hello Birdie™ are trademarks of Limitless Innovations, Inc. Design and specifications subject to change without notice. Products may vary from images shown. Electronic devices not included. All other trademarks included herein are property of their respective owners. Refer to your device's user manual for technical specification compatibility.

All Limitless products and information shared in this manual are protected by copyright. Copying, reproducing, reverse engineering or distributing any information of Limitless-related product hardware or software without a formal and written authorization and license from Limitless Innovations, Inc. is prohibited and may result in legal action to the full extent of the law.

Hello Birdie™



LIMITLESS™

HelloBirdieApp.com
LimitlessInnovations.com
Support@LimitlessInnovations.com
(855) 843-4828

Limitless Innovations, Inc.
4800 Metalmaster Way
McHenry, IL 60050

© Limitless Innovations, Inc.

Designed in USA. Made in China.



@LimitlessInnovations



/LimitlessInnov



/LimitlessInnov



/LimitlessInnov



Limitless Innovations