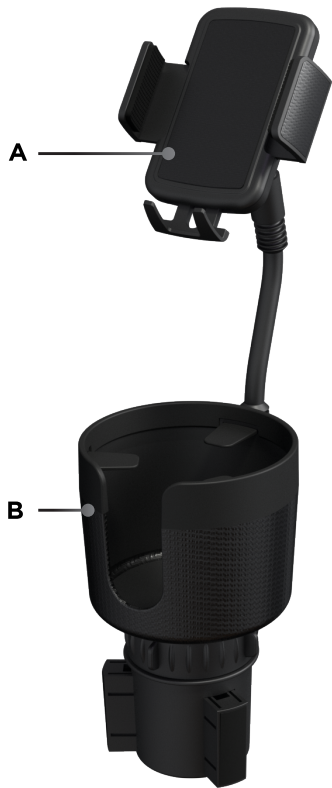


CupCargo™ Pro

Quick Start Guide

WHAT'S INCLUDED

- A. (1) CupCargo Pro Adjustable Cradle
- B. (1) CupCargo Pro Base



TECH SPECS

Model: LIM-CRGO2-001
Weight: 0.96 lb
Adjustable Grip (Closed): 2.125"
Adjustable Grip (Expanded): 3.75"
Fits Bottles and Cups: 4.20" Wide
Base Support Adjustment: 1"
Minimum Adjustable Base Diameter: 2.5"
Maximum Adjustable Base Diameter: 4"

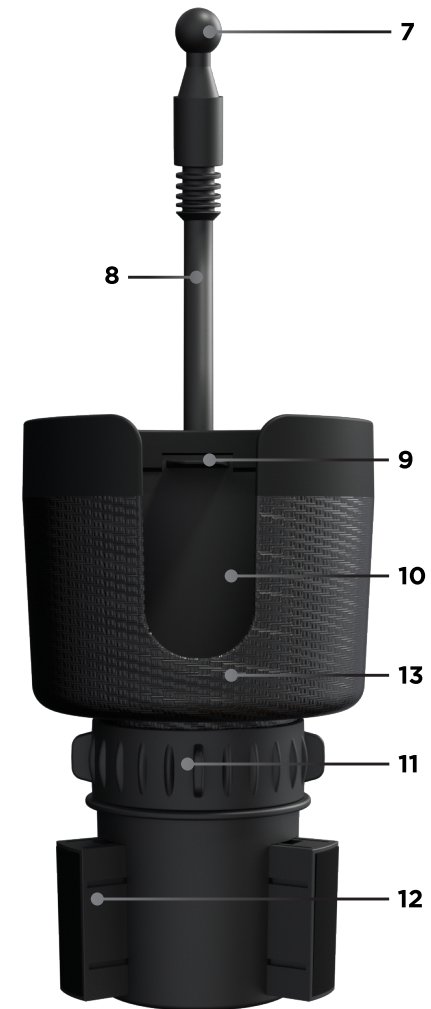
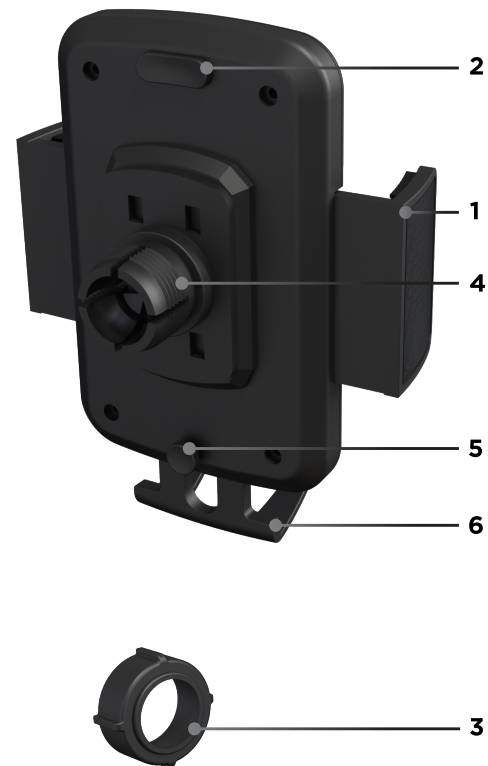
COMPONENTS

CupCargo Pro Adjustable Cradle

- 1. Adjustable Grips
- 2. Adjustable Grip Release Button
- 3. Socket Cap
- 4. Ball Joint Socket
- 5. Base Support Release Button
- 6. Cradle Base Support

CupCargo Pro Base

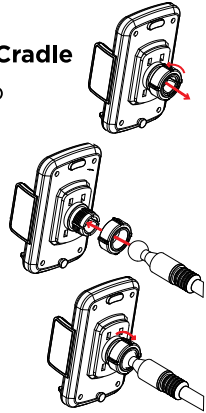
- 7. Ball Joint
- 8. Flexible Neck
- 9. Stabilizers
- 10. Handle Opening
- 11. Adjustable Base Dial
- 12. Adjustable Base
- 13. Cup Holder



HOW TO INSTALL

Installing the Adjustable Cradle

1. Remove the Socket Cap by turning it counter-clockwise.
2. Place the Socket Cap over the Ball Joint.
3. Insert and snap the Ball Joint into the Ball Joint Socket.
4. Place and align the Socket Cap onto the threads of the Ball Joint Socket and turn clockwise to hand tighten. Do **NOT** overtighten.



Installing the CupCargo Pro in a Vehicle's Cup Holder

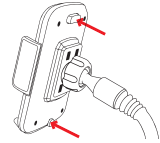
1. Place Base into a cup holder.
2. Turn the Adjustable Base Dial clockwise to adjust the Base until the CupCargo Pro is secured in the vehicle's cup holder. Do **NOT** overtighten.



Adjustment Options

Adjustable Grip

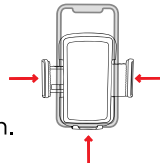
To open, press and hold the Adjustable Grip Release Button.



To close, push each Grip inwards until phone is secured.

Cradle Base Support

To extend, press the Base Support Release Button.



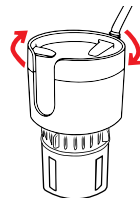
To close, push the Base Support up.

Flexible Neck

Push/pull the Flexible Neck until the desired positioning is met.

Additional CupCargo Adjustment

After the CupCargo Pro is installed, the cup holder can still be incrementally rotated 360° to position the handle opening and/or flexible neck into the desired position.



SAFETY INFORMATION

By using the Limitless CupCargo Pro, you hereby agree that Limitless Innovations, Inc., an Illinois Corporation and its affiliates ("Limitless") shall have no liability for any losses associated with property damage, personal injury or loss of life that are incurred by you or by any third party in connection with or relating in any manner whatsoever to your use of the Limitless CupCargo Pro. By using the Limitless CupCargo Pro, you hereby agree at all times to comply fully with all safety warnings, operating instructions and general safety information in this user manual. By using the Limitless CupCargo Pro, you further agree to hold harmless Limitless, (and Limitless' officers, directors, shareholders and employees) in connection with any losses sustained by you (including, without limitation, losses arising in whole or in part from property damage, personal injury or loss of life) relating in any manner whatsoever to your use of the Limitless CupCargo Pro.

SAFETY WARNINGS

- CupCargo Pro is **NOT** a toy and should be kept away from children.
- Do **NOT** subject the Limitless CupCargo Pro to harsh chemicals.
- Do **NOT** attempt to disassemble, repair, or open the CupCargo Pro or its accessories in any way.
- Do **NOT** force a device in between the arms of the CupCargo Pro or remove a device without opening the Arms of the Phone Mount using the Release Button.
- Limitless Innovations does **NOT** condone and strongly advises against usage of mobile device while driving.

SCAN TO LEARN MORE



LIMITLESS™

All rights reserved.
Limitless CupCargo™ Pro, CupCargo™ Pro, and Limitless™ are trademarks of Limitless Innovations, Inc. Design and specifications subject to change without notice. Products may vary from images shown.
Accessories sold separately.

LimitlessInnovations.com
Support@LimitlessInnovations.com
(855) 843-4828

Limitless Innovations, Inc.
4800 Metalmaster Way
McHenry, IL 60050

© Limitless Innovations, Inc.



@LimitlessInnovations



/LimitlessInnov



/LimitlessInnov



/LimitlessInnov



Limitless Innovations

Designed in USA. Made in China.