

CYTOFLEX® MESH

Precision Titanium Mesh

RECONSTRUCTION OF A DEFORMED, PARTIALLY EDENTULOUS RIDGE

This case illustrates the use of a Titanium mesh (Cytotflex® Mesh) and a mixture of autograft and synthetic bioactive glass (Unigraft®) to restore a deformed, partially edentulous mandibular alveolar ridge for subsequent implant placement.

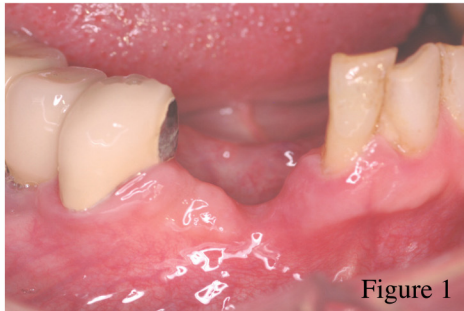


Figure 1
Deformed, partially edentulous alveolar ridge

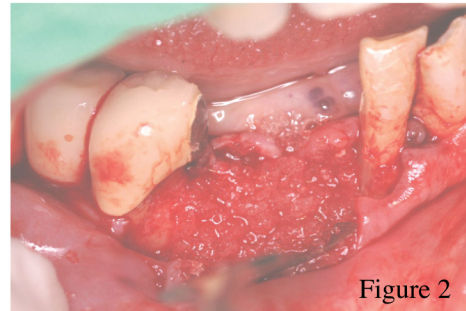


Figure 2
Defect filled with Unigraft® & autograft

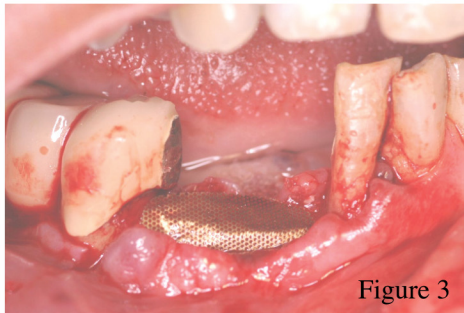


Figure 3
Cytotflex® Mesh tucked beneath flaps

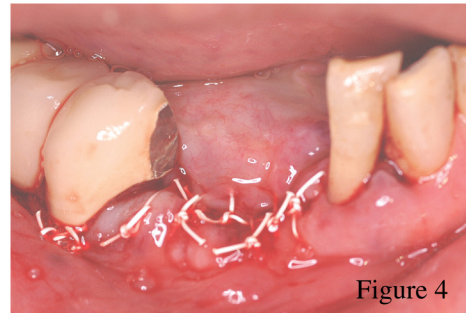


Figure 4
Primary closure with Gore-Tex® suture

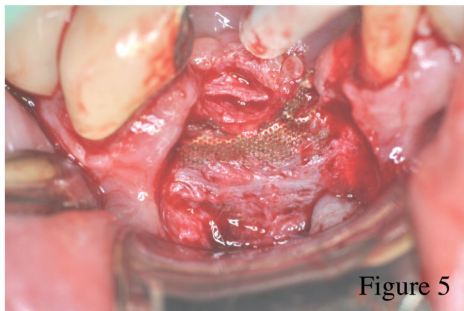


Figure 5
Atraumatic Mesh removal after 6 months

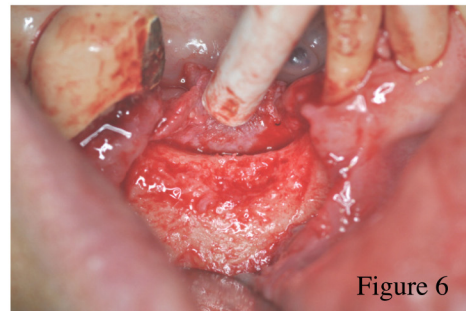


Figure 6
Ridge profile restored with newly formed bone

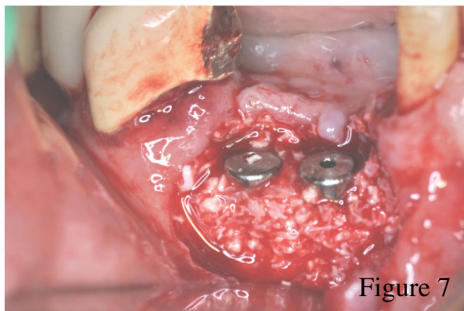


Figure 7
Implants placed and additional graft added

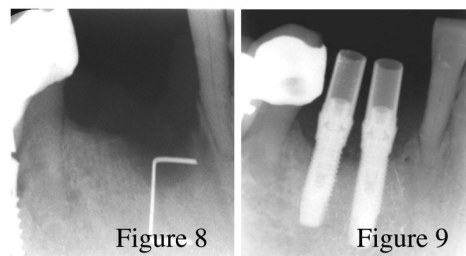


Figure 8

Figure 9

Radiographs of pre-op and post implantation