

## Step 1: Blood Collection

To maximize platelet volume and potency it is essential to utilize the PomPac® tube cooling system and the PomCol® blood draw cooling system. Store both the PomPac® and PomCol® in the refrigerator until the time of surgery.

1. Remove at least four red A-PRF™ tubes from their packages and place them in the PomPac®. A maximum of 6 tubes can be drawn without needing to flush the line with saline.
2. Begin a blood draw with a 21-gauge blood collection butterfly. Once the needle is inserted, wrap the patient's arm with the PomCol®.
3. While keeping the resting tubes in the PomPac®, individually remove one tube and begin to fill it. Once the tube is filled place it back in the PomPac®. It is essential that the blood draw happens quickly to prevent fibrin loss.
4. Once all the tubes are filled, they can then be placed into the DuoQuattro® centrifuge. Tubes must be placed parallel to each other to eliminate harmful vibrations.



PomCol® & PomPac® Blood Draw

## Step 2: Processing

The production of a A-PRF™ clot allows clinicians to produce a variety of forms of fibrin such as membranes, plugs, and prosthetic ponchos. All varieties of solid fibrin are produced using red A-PRF™ tube which are spun at 1300rpm for 14 minutes.

1. After selecting the first setting (A-PRF+) place the tubes in the centrifuge. To preserve cell vitality, it is important to place tubes parallel to each other to prevent excess vibrations.
2. Once the tubes are in the DuoQuattro® close the lid firmly near the latch and press start to begin the cycle.
3. After the spin cycle, place the tubes in the tube holder and remove the tops.
4. Allow the tubes to rest in the tube holder for 5 minutes before extracting the clot.
5. Remove the A-PRF™ fibrin clots from the red tubes using the forceps provided while scraping away the excess red blood cells with the blade of the scissors. It is important to scrape not cut.
6. If a fibrin plug is desired, place the A-PRF™ clot into the nylon compression sleeve and place the stainless-steel piston into the chamber to compact the clot. Once the top of the piston is level with the top of the nylon cylinder, the plug will be ready to use.
7. If a fibrin membrane is desired, simply lay the A-PRF™ clots inside the MK2 PRF box and place the press tray on top of the membranes. After five minutes, the membranes will be ready to use. Although the membranes are ready to use, they are viable within the box for up to four hours.
8. To form a poncho, simply use the A-PRF™ drainage slits as a guide for incision. Once a slit is created in the center of the membrane, it can be tucked around a healing abutment to improve gingival esthetics.



Protocol for A-PRF™ Clots



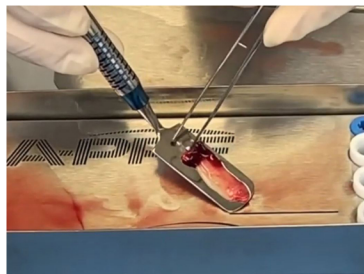
Removing/Scraping Fibrin Clots



Pressing Fibrin Plugs



Pressing Fibrin Membranes



Fibrin Membranes Ready to Use



Poncho Incision



Poncho Around Healing Abutment