

NEOREST LE I WALL HUNG TOILET



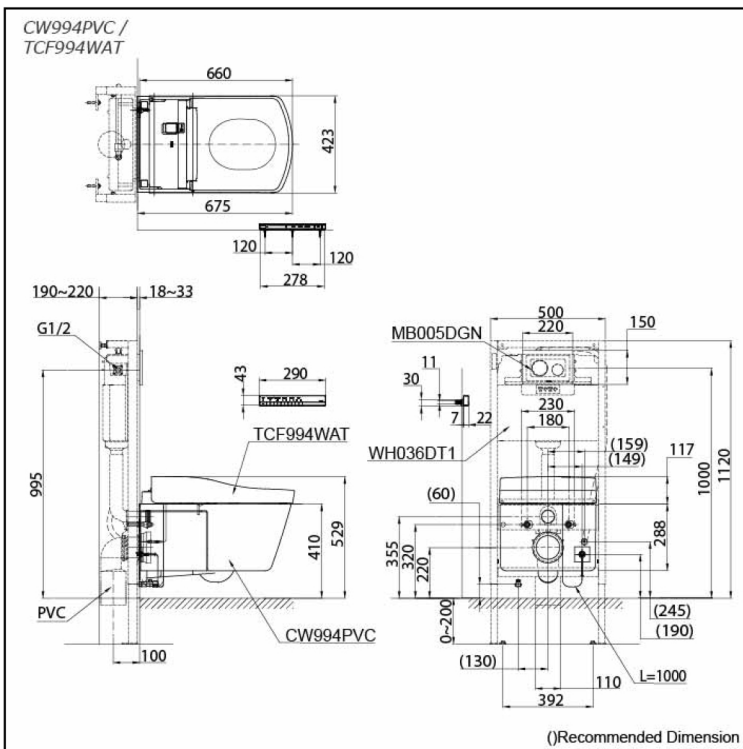
Features

- Integrated appearance of luxury, elegant and seamless design
- TORNADO FLUSH for powerful flushing effect with less amount of water
- Integral WASHLET features front and rear warm water washing
- EWATER+ keeps toilet bowl and nozzle clean by preventing bacteria with sanitizing effect
- Automatic operation: Lid opens, closes and toilet flushes when sensor is activated
- Auto soft light function usable for night time usage

EWATER+, highly effective sanitizer created by electrolyzed chloride ion in tap water. After use, it returns back to original state, environmental friendly

Specifications

- Flush system: TORNADO FLUSH
- Water Use: 4.5L / 3L
- Rough-in: H=220 mm (P-Trap)
- Water Pressure: 0.05MPa~0.75MPa
- Power Rating: 220~240V, 50/60Hz, 839~849W
- Length of Power Cord: 1.0 m
- Size: 423W x 675D x 461H mm



Parts description

Fittings and Seat & Cover are not included

- **CW994PVC**
Wall Hung Toilet
- **TCF994WAT**
WASHLET Unit

Optional Parts

- WH036DT1
Concealed Cistern w/Frame
- MB005DGN
Flush Panel

Colors

White (CEFIONTECT)

