

PRODUCT INFORMATION

| | |
|------------------|-----------------------|
| Installation | Undermount |
| Dimensions | 200 x 440mm |
| Cabinet Base | 300mm |
| Bowl Size | 160 x 400 x 150mm/9L |
| Bowl Radius | 25mm |
| Cut-Out Size | 160 x 400mm, cr=25 |
| Cut-Out Template | Yes |
| Waste Outlet | Semi Integrated Waste |
| Overflow | Yes |
| Tap Holes | No |
| Finish | Stainless Steel |
| Warranty | 50 Years |

NOTE: Cut-out dimensions are a guide only, please use the actual sink as your template.

FEATURES & BENEFITS



Food Preparation Centre



18/10 Stainless Steel



Push Button Remote Waste



Hidden Overflow



Sound Deadening Pads

ACCESSORIES

— Included Accessory
- - - Available Accessory



RM081
Rollamat

- - -



PB835
Push Button Waste

- - -



CBP082
Chopping Board

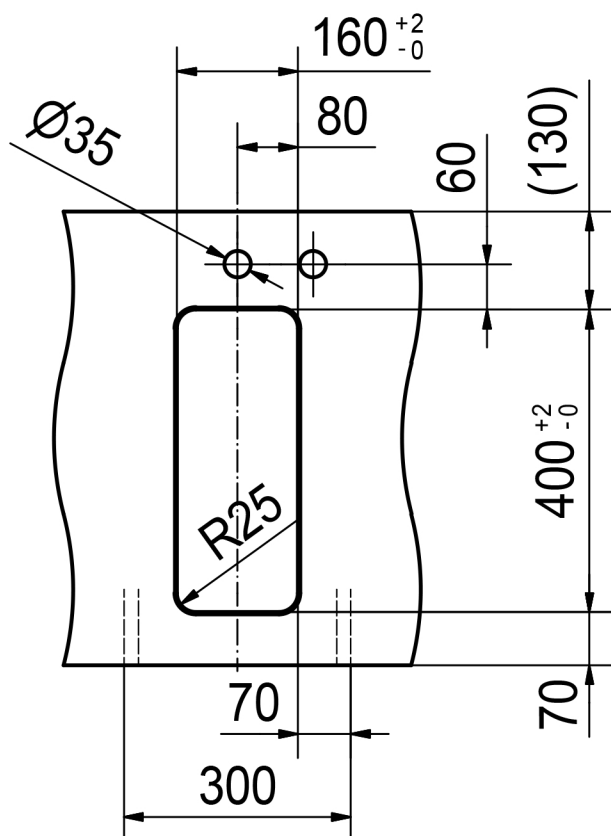
- - -



SB398
Strainer Bowl

- - -

CO



| | | | |
|--|-------------|----------|--|
| Drawing No. | 20140280_01 | Revision | |
| Drawn Date | 06.06.2019 | | |
| <small>These drawings and specifications are the property of Franke Technology and Trademark Ltd. and shall not be reproduced, copied or transferred to any third party without the prior written permission of Franke Technology and Trademark Ltd., Hergiswil, Switzerland</small> | | | |



MYX 110-16 I
installing document

| Sheet | Sheets |
|-------|--------|
| 3 | 6 |