

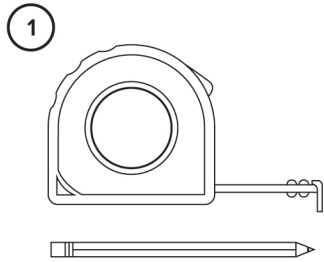
# cord protector Instruction Sheet

utwire®

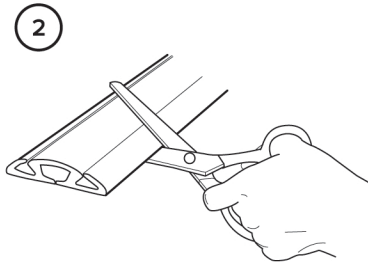
## WARNING

- Please do not overload the compartments.
- Turn off power and unplug all power wires prior to installation.
- To be used on the floor only. Do not use on walls.
- This product is not to be used for hard-wired electrical wiring.
- For use in dry and indoor locations only.
- Product must be securely taped on the floor.

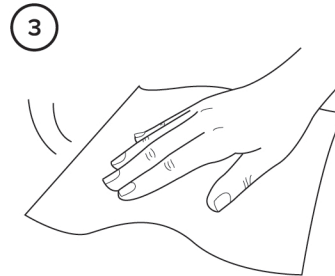
## INSTALLATION INSTRUCTIONS



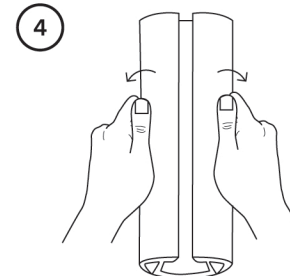
Measure and plan the route.



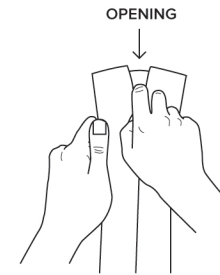
Cut to desired length with a pair of scissors.



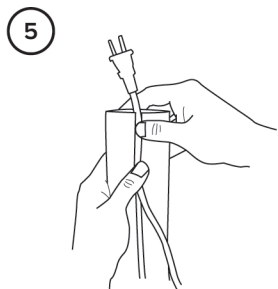
Wipe clean and dry surface before applying for best adhesion.



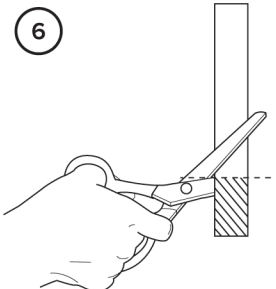
Gently tear open the compartments with your fingers.



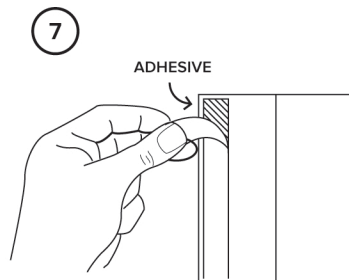
a. Tip: Insert your finger into a channel from one end of the cord protector and pull your finger back to break the channel seal.



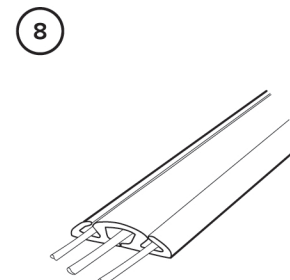
Insert cords into channels before applying the tape to the cord protector.



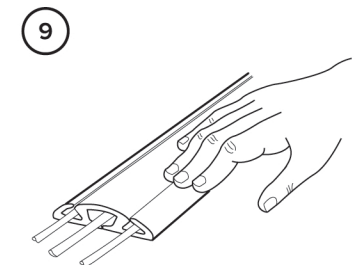
Cut the double sided tape to the appropriate length.



Tear off the tape backing of one side and apply to the cord protector.



Tear off the tape backing for the other side and apply the cord protector to the floor.



Press firmly down on the cord protector to create the adhesive bond.