

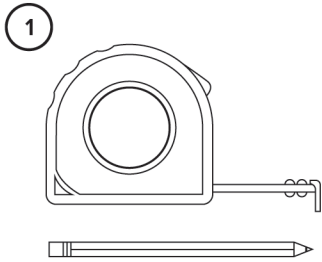
# compact cord protector Instruction Sheet

utwire®

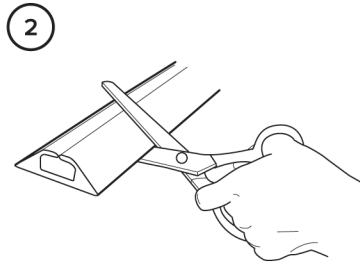
## WARNING

- Please do not overload the compartments.
- Turn off power and unplug all power wires prior to installation.
- To be used on the floor only. Do not use on walls.
- This product is not to be used for hard-wired electrical wiring.
- For use in dry and indoor locations only.
- Product must be securely taped on the floor.

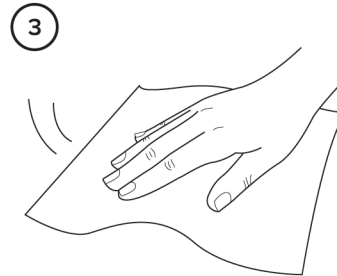
## INSTALLATION INSTRUCTIONS



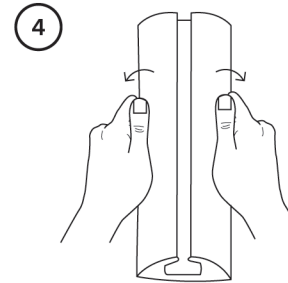
Measure and plan the route.



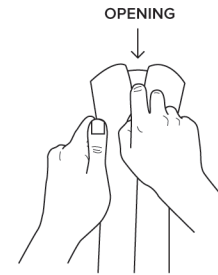
Cut to desired length with a pair of scissors.



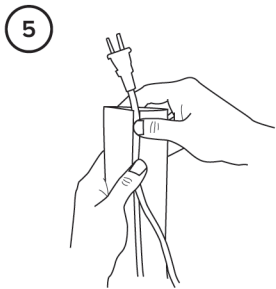
Wipe clean and dry surface before applying for best adhesion.



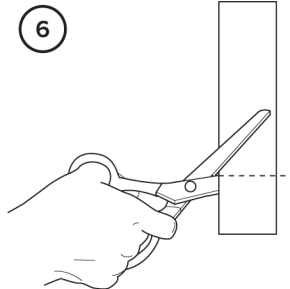
Gently tear open the compartment with your fingers.



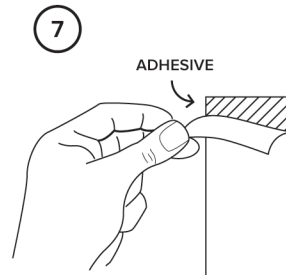
Tip: Insert your finger into the channel from one end of the cord protector and gently pull your finger back to break the channel seal.



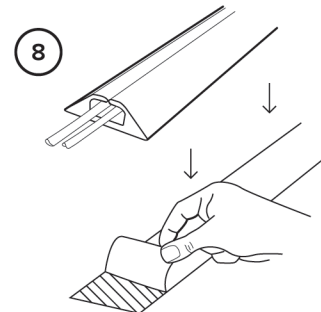
Insert cords into the channel before applying the compact cord protector to the floor.



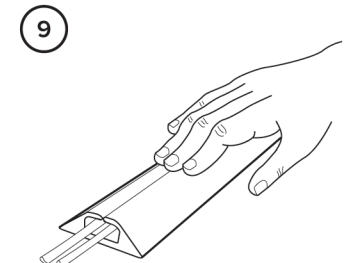
Cut the double sided tape to the appropriate length.



Tear off the tape backing for one side and apply to the floor.



Tear off the other tape backing and apply the compact cord protector to the floor.



Press firmly down on the compact cord protector to create the adhesive bond.