

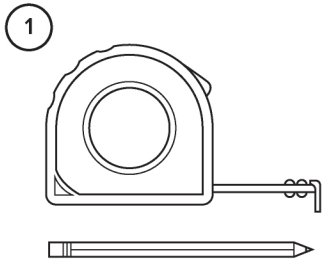
cable blanket™ Instruction Sheet

utwire®

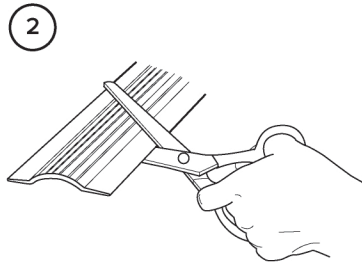
WARNING

- Please do not overload the compartments.
- Turn off power and unplug all power wires prior to installation.
- To be used on the floor only. Do not use on walls.
- This product is not to be used for hard-wired electrical wiring.
- For use in dry and indoor locations only.
- Product must be securely taped on the floor.

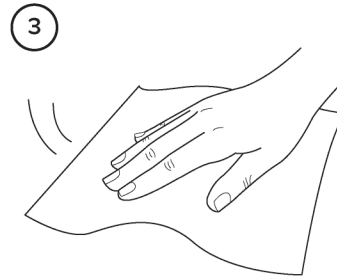
INSTALLATION INSTRUCTIONS



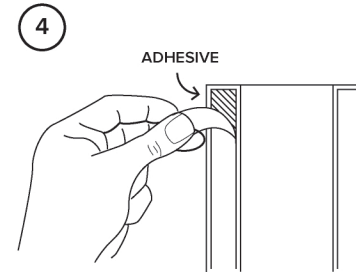
Measure and plan the route.



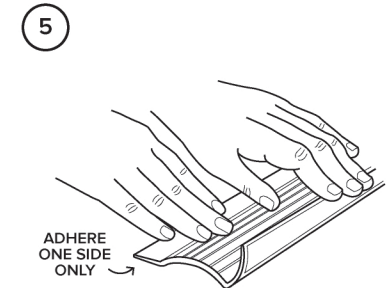
Cut to desired length with a pair of scissors.



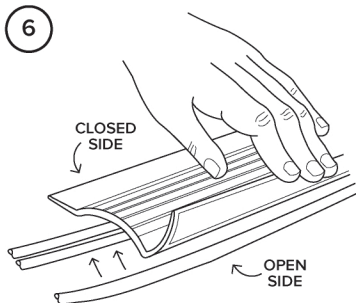
Wipe clean and dry surface before applying for best adhesiveness.



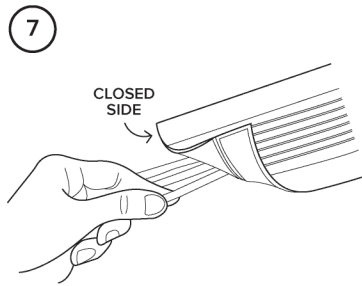
Remove only **one side** of the tape backing first, then tape that side to the floor.



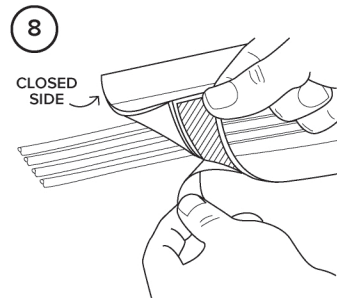
Press firmly on top to create adhesive bond.



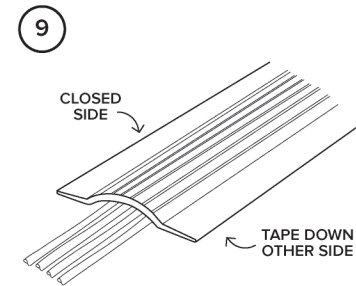
Insert cables from the **open side**.



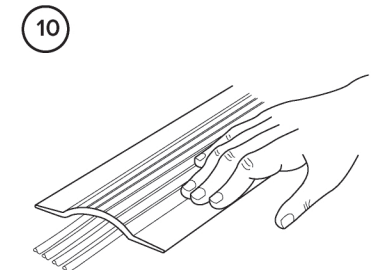
Adjust cables neatly to ensure maximum space is used in cover without stacking too many cables on top of each other or creating empty spaces in the cover.



Remove the second tape backing on the open side.



Tape it on the floor and make sure all cables are stored and tightly packed inside the channel. Tape cannot be applied to cables.



Press firmly again on top to create adhesive bond.