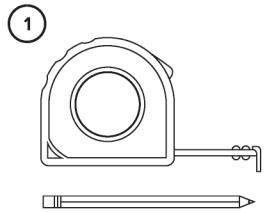


WARNING

- Please do not overload the channel. The opening should be completely close. Cords should not be exposed.
- Turn off power and unplug all power wires prior to installation.
- This product is not to be used for hard-wired electrical wiring.
- For use in dry and indoor locations only.

INSTALLATION INSTRUCTIONS

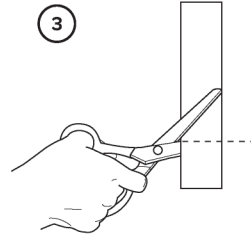
For best results, please **DO NOT** open the slit for the channel prior to taping the cord channel on the wall in step 9.



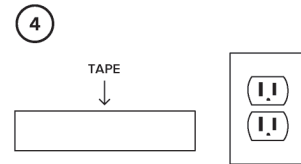
1 Measure and plan the route.



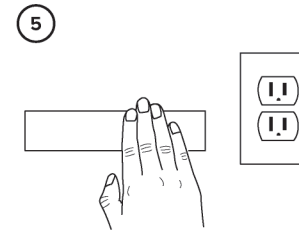
2 Wipe clean and dry the area of wall for the route.



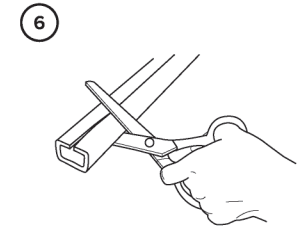
3 Cut the double sided tape to the appropriate length.



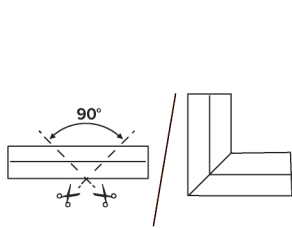
4 Peel off the tape liner for one side and apply the tape **FIRST** to the wall.



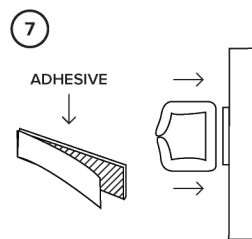
5 Press the tape firmly against the wall for maximum adhesion.



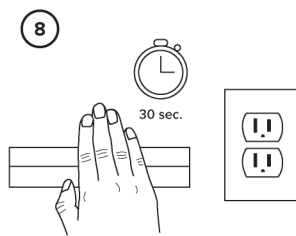
6 Cut the cord channel to the desired length with a pair of scissors.



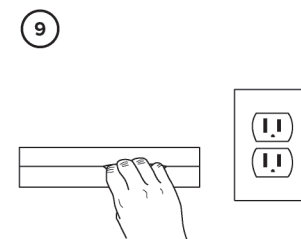
Tip: Cut the cord channel at a 90-degree angle to form neat corners.



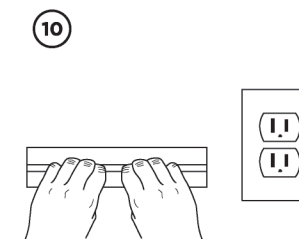
7 Peel off the other tape liner and apply the cord channel to the tape. Slit should face the front.



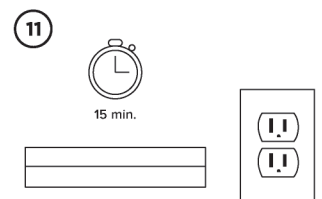
8 Press firmly across the length of the cord channel for 30 seconds.



9 Press gently to open the slit with your fingers.



10 Press the cord channel to the wall again through the opened slit.



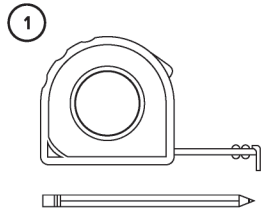
11 Wait 15 minutes for the adhesive bond to set before inserting cords.

ADVERTENCIA

- No sobrecargue los canales. La abertura debe poder cerrarse y no debe expandirse con los cables expuestos hacia afuera.
- Antes de la instalacion, apague los equipos y desenchufe los cables a usar.
- Este product no debe usarse para cableado eléctrico directo.
- Solo para uso en interiores y lugares secos.

INSTRUCCIONES DE INSTALACIÓN:

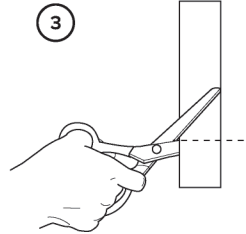
Para mejores resultados, favor **NO ABRIR** la ranura de la canaleta antes de adherirla a la pared (paso 9).



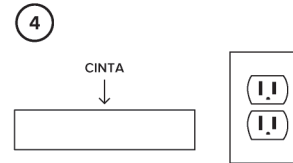
1 Mida y planee la ruta de la canaleta.



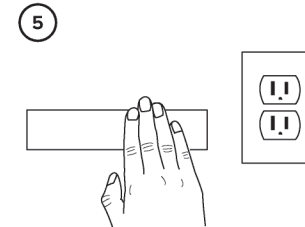
2 Limpie y seque el área de la pared donde irá la canaleta.



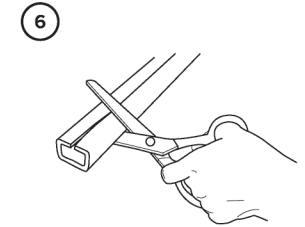
3 Corte la cinta doble cara a la medida necesaria.



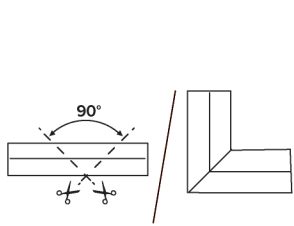
4 Retire el papel protector de un lado y coloque la cinta primero en la pared.



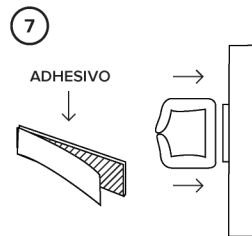
5 Presione la cinta firmemente contra la pared para máxima adhesión.



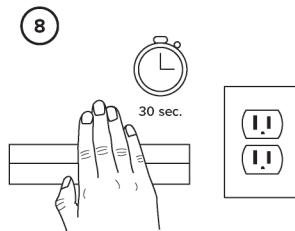
6 Utilizando tijeras, corte la canaleta a la medida deseada.



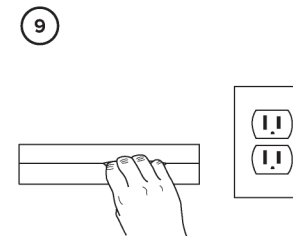
7 Consejo: corte la canaleta a un ángulo de 90 grados para formar esquinas perfectas.



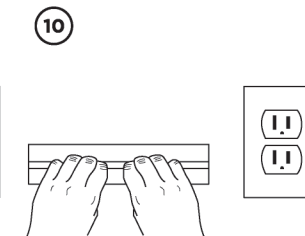
8 Retire el papel protector restante de la cinta y coloque la canaleta sobre ella. La ranura debe quedar al frente.



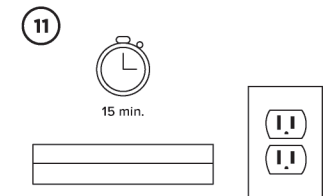
9 Presione firmemente a lo largo de toda la canaleta por 30 segundos.



10 Presione ligeramente para abrir la ranura con los dedos.



11 Presione la canaleta contra la pared, nuevamente, a través de la ranura abierta.



12 Espere 15 minutos para que la cinta adhesiva se fije completamente antes de introducir cualquier cable.