

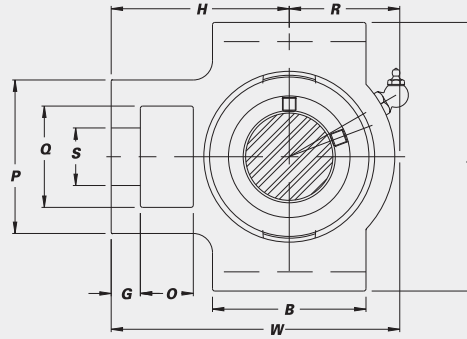
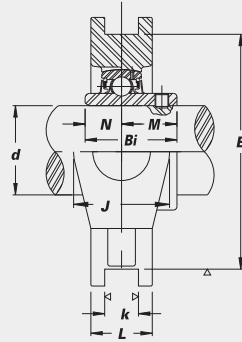
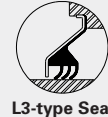
# UCT Take Up Units



## Wide slot, standard duty with set screw lock.

- Cast iron housing
- Wide inner race bearing
- Available with high temp. bearing - See page 46

- B-type seals
- L3-type seals available in some sizes



STANDARD PRODUCTS

Unit No.	Shaft Dia.		Dimensions (in.) (mm)															Bearing No.	Housing No.	Weight (lbs.)			
	d (in.)	d (mm)	O	G	P	Q	S	B	k	E	A	W	J	L	R	H	Bi				N	M	
UCT 201		12																			UC 201		
201-8	1/2	15																			201-8		
202		15	5/8	13/32	2	1 1/4	3/4	2	17/32	3	3 1/2	3 11/16	1 1/4	13/16	1 5/16	2 13/32	1.2205	0.5000	0.7205				
202-10	5/8	17	16	10	51	32	19	51	13.5	76.2	89	94	32	21	33	61	31.0	12.7	18.3		T 204	1.7	
203		17																					
204-12	3/4	20																					
204		20																					
UCT 205-14	7/8	25																					
205-15	15/16	25	5/8	13/32	2	1 1/4	3/4	2	17/32	3	3 1/2	3 13/16	1 1/4	15/16	1 3/8	2 1/16	1.3386	0.5630	0.7756				
205		25	16	10	51	32	19	51	13.5	76.2	89	97	32	24	35	62	34.0	14.3	19.7		T 205	1.9	
205-16	1	25																					
UCT 206-17	1 1/16	30																					
206-18	1 1/8	30	5/8	13/32	2 1/32	1 5/32	55/64	2 1/4	17/32	3 1/2	4 1/32	4 7/16	1 5/32	1 3/32	1 11/16	2 3/4	1.5000	0.6260	0.8740				
206		30	16	10	56	37	22	57	13.5	88.9	102	113	37	28	43	70	38.1	15.9	22.2		T 206	2.9	
206-19	1 3/16	30																					
206-20	1 1/4	30																					
UCT 207-20	1 1/4	35																					
207-21	1 5/16	35	5/8	1/2	2 17/32	1 5/32	55/64	2 17/32	17/32	3 1/2	4 1/32	5 3/32	1 5/32	1 3/16	2	3 1/16	1.6890	0.6890	1.0000				
207-22	1 3/8	35	16	13	64	37	22	64	13.5	88.9	102	129	37	30	51	78	42.9	17.5	25.4		T 207	3.5	
207		35																					
207-23	1 7/16	35																					
UCT 208-24	1 1/2	40																					
208-25	1 9/16	40	3/4	5/8	3 3/32	1 5/16	1 9/64	3 3/32	1 1/16	4	4 1/2	5 21/32	1 5/16	1 5/16	2 1/32	3 15/32	1.9370	0.7480	1.1890				
208		40	19	16	83	49	29	83	17.5	101.6	114	144	49	33	56	88	49.2	19.0	30.2		T 208	5.5	
UCT 209-26	1 5/8	45																					
209-27	1 11/16	45	3/4	5/8	3 3/32	1 5/16	1 9/64	3 3/32	1 1/16	4	4 13/32	5 21/32	1 5/16	1 3/8	2 1/4	3 1/16	1.9370	0.7480	1.1890				
209-28	1 3/4	45	19	16	83	49	29	83	17.5	101.6	117	144	49	35	57	87	49.2	19.0	30.2		T 209	5.5	
209		45																					
UCT 210-30	1 7/8	50																					
210-31	1 15/16	50	3/4	5/8	3 3/32	1 5/16	1 9/64	3 3/8	1 1/16	4	4 13/32	5 7/8	1 5/16	1 5/32	2 5/16	3 11/32	2.0315	0.7480	1.2835				
210		50	19	16	83	49	29	86	17.5	101.6	117	149	49	37	59	90	51.6	19.0	32.6		T 210	5.7	
210-32	2S	50																					
UCT 211-32	2	55																					
211-34	2 1/8	55	1	3/4	4 1/32	2 17/32	1 3/8	3 3/4	1 1/16	5 1/8	5 3/4	6 23/32	2 17/32	1 1/2	2 9/16	4 3/16	2.1890	0.8740	1.3150				
211		55	25	19	102	64	35	95	27	130.2	146	171	64	38	65	106	55.6	22.2	33.4		T 211	8.8	
211-35	2 3/16	55																					
UCT 212-36	2 1/4	60																					
212		60	1 1/4	3/4	4 1/32	2 17/32	1 3/8	4 1/32	1 1/16	5 1/8	5 3/4	7 5/8	2 17/32	1 21/32	2 15/16	4 11/16	2.5630	1.0000	1.5630				
212-38	2 3/8	60	32	19	102	64	35	102	27	130.2	146	194	64	42	75	119	65.1	25.4	39.7		T 212	10.6	
212-39	2 7/16	60																					
UCT 213-40	2 1/2	65																					
213		65	1 1/4	13/16	4 3/8	2 3/4	1 39/64	4 3/4	1 1/16	5 15/16	6 9/16	8 13/16	2 3/4	1 23/32	3 1/16	5 13/32	2.5630	1.0000	1.5630		T 213	15.2	
UCT 215-47	2 15/16	75																					
215		75	1 1/4	13/16	4 3/8	2 3/4	1 39/64	4 3/4	1 1/16	5 15/16	6 9/16	9 1/8	2 3/4	1 7/8	3 5/8	5 1/2	3.0630	1.3110	1.7520				
215-48	3	75	32	21	111	70	41	121	27	150.8	167	232	70	48	92	140	77.8	33.3	44.5		T 215	15.9	

Interchange Page 91