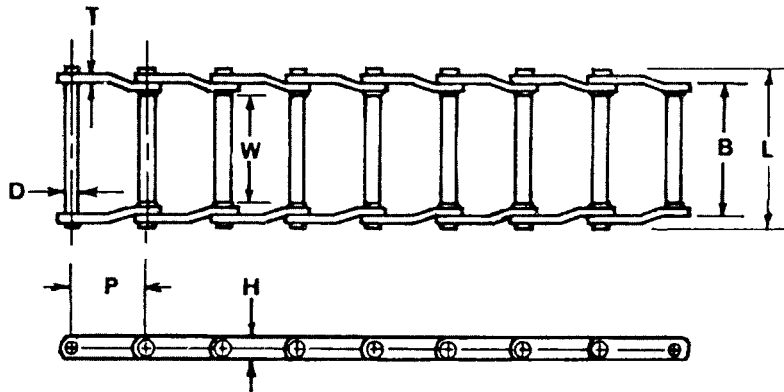


### Welded Steel Chains

Dimensions: inch

PEER Chain No.	Pitch P	Bushing		Plate		Pin Diam. D	Overall Width		Average Tensile Strength		Average Weight Per Foot Lbs.
		Width	Diam.	Height	Thickness		F	G	Pin Heat Treated	All Ht. Treated	
		W	R	H	T						
WR 78	2.609	1.125	0.875	1.120	0.250	0.500	1.500	1.625	21,000	24,000	4.40
WR 82	3.075	1.250	1.125	1.250	0.250	0.562	1.623	1.798	22,500	29,500	5.50
WR 111	4.760	2.250	1.375	1.500	0.375	0.750	2.467	2.584	38,000	50,500	6.30
WR 106	6.000	1.625	1.375	1.500	0.375	0.750	2.204	2.412	38,000	50,500	7.00
WR 110	6.000	3.000	1.250	1.500	0.375	0.750	2.156	2.395	38,000	50,500	6.65
WR 124	4.000	1.625	1.375	1.500	0.375	0.750	2.219	2.340	38,000	50,500	8.50
WR 132	6.050	3.000	1.625	2.000	0.500	1.000	3.097	3.451	62,000	76,000	13.30
WR 150	6.050	3.000	1.750	2.500	0.500	1.000	3.062	3.274	67,000	90,000	15.70
WR 155	6.050	2.750	1.750	2.500	0.562	1.125	3.227	3.382	95,000	102,000	18.10



### Welded Drag Chains

Dimensions: inch

PEER Chain No.	Pitch P	Bushing Width W	Length of Bearing B	Plate		Pin Diam. D	Overall Length Over Rivet L	Avg. Tensile Strength		Average Weight Per Foot Lbs.
				Height	Thickness			Pin Heat Treated	All Ht. Treated	
				H	T					
WD 102	5.000	6.500	7.750	1.500	0.375	0.750	9.125	38,250	55,000	10.80
WD 104	6.000	4.125	5.375	1.500	0.375	0.750	6.750	38,250	55,000	8.50
WD 110	6.000	9.000	10.375	1.500	0.375	0.750	11.750	38,250	55,000	13.35
WD 112	8.000	9.000	10.375	1.500	0.375	0.750	11.750	38,250	55,000	11.20
WD 116	8.000	13.000	14.125	1.750	0.375	0.750	15.500	55,000	59,000	15.70
WD 480	8.000	12.750	12.750	2.000	0.500	0.875	14.625	70,000	79,000	19.00