

Chains & sprockets	Wear strips	Side guide brackets & accessories	Levelers
Modular belts & sprockets	Chain & belt return systems	Frame & structure supports	Bearing supports
Curves & tracks	Side guide solutions	Miscellaneous products	Engineering manual

6 4 5 2 5 a

HANDLES

www.SystemPlastSmartGuide.com

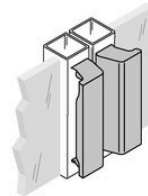
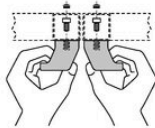


VALU GUIDE® HANDLES

SAFETY HANDLE

MATERIAL

Reinforced black polyamide.



DESCRIPTION

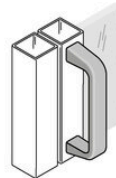
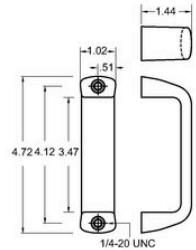
Closed designed handle allows easy opening without pinched fingers and scraped knuckles when handles are mounted side by side on adjacent doors. Fasteners and tube hole caps included.

ITEM DESCRIPTION	COLOR	THREAD
VG-630-BK	Black	M6

STANDARD DUTY HANDLE

MATERIAL

Reinforced gray or black polyamide.



DESCRIPTION

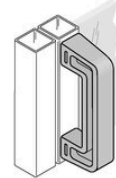
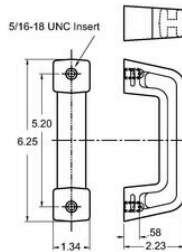
Sleek, medium duty handle used for doors, cabinets and other application.

ITEM DESCRIPTION	COLOR	THREAD
VG-631-14	Black	1/4 - 20
VG-631-14-GR	Grey	1/4 - 20

HEAVY DUTY HANDLE

MATERIAL

Reinforced black polyamide with brass threading.



DESCRIPTION

Corrosion resistant design offers exceptional durability for doors, cabinets, clean-out panets, lift up covers and applications requiring a stronger handle.

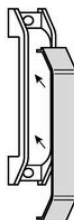
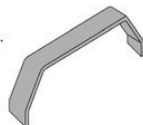
ITEM DESCRIPTION	COLOR	THREAD
VG-632-516	Black	5/16 - 18

FLEXTECH™ HANDLES

HANDLE COVER

MATERIAL

Reinforced black polyamide.



DESCRIPTION

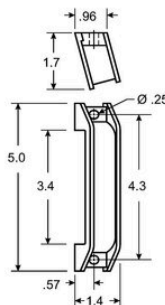
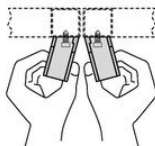
Handle cover fits both thru and closed offset handles to aid in visibility and safety.

ITEM DESCRIPTION	COLOR
FT-HDL-1-CAP-BK	Black

15° OFFSET CLOSED HANDLE

MATERIAL

Reinforced grey polyamide.



DESCRIPTION

Made of high strength grey polyamide. Ergonomic 15° offset.

ITEM DESCRIPTION	COLOR
FT-HDL-1-GR	Grey