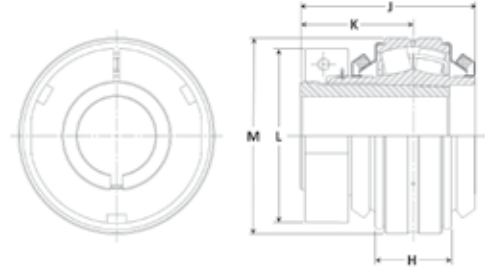


Performance Mounted Spherical Roller Bearings **SEALMASTER**®



- Rolling Elements:** Spherical Roller
- Housing:** Insert Bearing
- Self Alignment:** +/- 2 Degrees
- Lock:** Adapter
- Seal:** Felt
- Optional Seal:** Double Lip Contact
- Temperature:** -20° to 220° F



USI5000K Unitized Spherical Roller Bearing Inserts - Klamploc™ Adapter Mount

BORE DIAMETER	PART NO.	BASIC DYNAMIC RATING lb/N	DIMENSIONS inch / mm					UNIT WT. lb/kg
			H	J	K	L	M (NOMINAL)	
inch								
1 1/8	USI5000K-102							
1 3/16	USI5000K-103	20368	1 15/16	2 13/16	1 13/16	2 51/64	3.1494	3.0
1 1/4	USI5000K-104	90597	49.2	71.4	46.0	71.0	80.0	1.4
1 7/16	USI5000K-107							
1 1/2	USI5000K-108							
1 11/16	USI5000K-111	22689	1 7/32	2 15/16	1 57/64	3	3.3470	3.0
1 3/4	USI5000K-112	100921	31.0	74.6	48.0	76.2	85.0	1.4
1 15/16	USI5000K-115	23520	1 17/64	2 13/16	1 3/4	3 13/64	3.5430	3.0
2	USI5000K-200	104622	32.1	71.4	44.5	81.4	90.0	1.4
2 3/16	USI5000K-203	28087 124931	1 23/64 34.5	3 5/32 80.2	2 1/64 51.2	3 1/2 88.9	3.9367 100.0	4.0 1.8
2 7/16	USI5000K-207	44691	1 11/16	3 19/32	2 19/64	4 3/32	4.7241	7.4
2 1/2	USI5000K-208	198786	42.9	91.3	58.3	104.0	120.0	3.4
2 11/16	USI5000K-211							
2 3/4	USI5000K-212	47447	1 23/32	3 29/32	2 33/64	4 1/2	5.1178	8.3
2 15/16	USI5000K-215	211044	43.7	99.2	63.9	114.3	130.0	3.8
3	USI5000K-300							
3 3/16	USI5000K-303	72640	2 1/8	4 35/64	2 55/64	5 1/2	6.2987	16.1
3 7/16	USI5000K-307	323103	54.0	115.5	72.6	139.7	160.0	7.3
3 1/2	USI5000K-308							
3 11/16	USI5000K-311	96050	2 13/32	4 61/64	3 3/32	5 45/64	7.0861	20.1
3 15/16	USI5000K-315	427230	61.1	125.8	78.6	144.9	180.0	9.1
4	USI5000K-400							
4 7/16	USI5000K-407	111537	2 11/16	5 33/64	3 7/16	6 1/2	7.8734	27.4
4 1/2	USI5000K-408	496117	68.3	140.1	87.3	165.1	200.0	12.4
4 15/16	USI5000K-415	158816	3 21/64	6 21/64	3 29/32	7 1/2	9.0545	45.9
	USI5000K-500	706414	84.5	160.7	99.2	190.5	230.0	20.8
5 7/16	USI5000A-507	196682 874842	3 21/32 92.9	7 7/8 200.0	2 39/64 66.3	7 47/64 196.5	9.8419 250.0	57.7 26.2
5 15/16	USI5000A-515	261346 1162467	4 25/64 111.5	8 11/16 220.7	3 1/64 76.6	8 1/2 215.9	11.1724 283.8	91.3 41.4
6 7/16	USI5000A-607							
6 1/2	USI5000A-608	334229	4 55/64	9 45/64	3 5/16	9 11/16	12.5976	118.7
6 15/16	USI5000A-615	1486651	123.4	246.5	84.1	246.1	320.0	53.8
7	USI5000A-700							
7 1/2	USI5000A-708	363818	5 15/64	10 9/16	3 19/32	11 7/64	14.1732	178.9
7 15/16	USI5000A-715	1618262	133.0	268.3	91.3	282.2	360.0	81.1
8	USI5000A-800							

Metric dimensions for reference only.

Not all parts are available from stock. Please contact customer service for availability (800) 626-2120.

For more information on bearing capabilities outside of our standard offering, please contact Application Engineering (800) 626-2093.