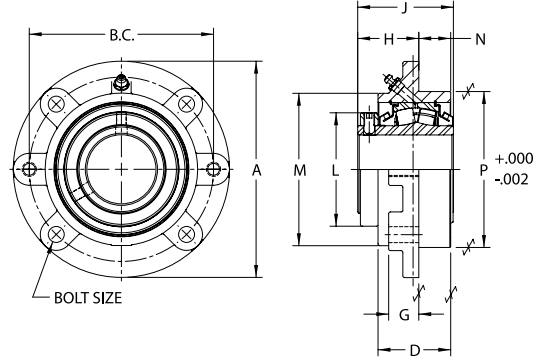




- Rolling Elements:** Spherical Roller
- Housing:** Ductile Iron Piloted Flange Cartridge
- Self Alignment:** +/- 2 Degrees
- Lock:** Setscrew
- Seal:** Felt
- Optional Seal:** Double Lip Contact
- Temperature:** -20° to 220° F



### USFCE5000 Series Flange Cartridge Units - Collar Mount, Type E Mounting Dimensions

BORE DIAMETER	PART NO.	BASIC DYNAMIC RATING lb/N	DIMENSIONS inch / mm										UNIT WT. lb/kg	
			A	B.C.	D	G	H*	J	L	M	N*	P		BOLT SIZE
1 15/16	USFCE5000-115	23520	6 3/8	5 3/8	2 7/16	1	1 31/32	2 7/8	3	4 1/2	1 1/16	4 1/2	3/8	9.6
2	USFCE5000-200	104622	161.9	136.5	61.9	25.4	50.0	73.0	76.2	114.3	27.0	114.3		4.35
2 3/16	USFCE5000-203	28087	7 1/8	6	2 1/2	1	2 1/16	3 1/8	3 1/4	4 7/8	1 1/8	5	1/2	11.8
		124931	181.0	152.4	63.5	25.4	52.4	79.4	82.6	123.8	28.6	127.0		5.35
2 7/16	USFCE5000-207	44691	7 5/8	6 1/2	2 9/16	1 1/16	2 5/32	3 3/8	4	5 3/8	1 1/8	5 1/2	1/2	15.0
2 1/2	USFCE5000-208	198786	193.7	165.1	65.1	27.0	54.8	85.7	101.6	136.5	28.6	139.7		6.83
2 11/16	USFCE5000-211	47447 211044	8 3/4 222.3	7 1/2 190.5	2 9/16 65.1	15/16 23.8	2 7/16 61.9	3 7/8 98.4	4 17/32 115.1	6 1/4 158.8	1 1/4 31.8	6 3/8 161.9	5/8	22.0 10.02
2 3/4	USFCE5000-212													
2 15/16	USFCE5000-215													
3	USFCE5000-300													
3 3/16	USFCE5000-303	72640 323103	10 1/4 260.4	8 5/8 219.1	3 1/8 79.4	1 7/16 36.5	2 15/16 74.6	4 15/32 113.5	5 5/16 134.9	7 1/8 181.0	1 5/16 33.3	7 3/8 187.3	3/4	36.5 16.59
3 7/16	USFCE5000-307													
3 1/2	USFCE5000-308													
3 11/16	USFCE5000-311	96050 427230	10 7/8 276.2	9 3/8 238.1	3 1/2 88.9	1 1/16 27.0	2 21/32 67.5	4 15/16 125.4	6 152.4	7 3/4 196.9	2 1/16 52.4	8 1/8 206.4	3/4	42.7 19.40
3 15/16	USFCE5000-315													
4	USFCE5000-400													

\* For expansion bearings, the sum of dimension "H" and "N" can increase by the corresponding value in table VIII on page I-69.

Metric dimensions for reference only.

Not all parts are available from stock. Please contact customer service for availability (800) 626-2120.

For more information on bearing capabilities outside of our standard offering, please contact Application Engineering (800) 626-2093.