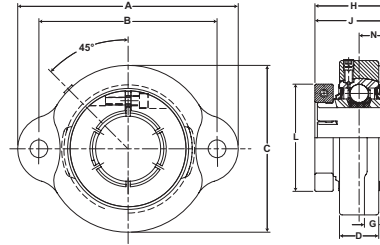
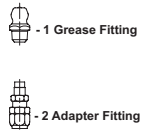




- Duty:** Standard
- Rolling Elements:** Ball
- Housing:** Ductile Iron Two Bolt Flange
- Self Alignment:** +/- 2 Degrees
- Lock:** Concentric
- Lock:** SKWEZLOC Locking Collar
- Seal:** Felt
- Optional Seal:** Contact
- Temperature:** -20° to 220°F



Options



TFT-T Series Standard Duty Two-Bolt Flange Units - SKWEZLOC Locking Collar

BORE DIAMETER inch	PART No.			PART No.	BASIC DYNAMIC RATING lb/N	DIMENSIONS inch / mm								BOLT SIZE	UNIT Wt. lb/kg
	STANDARD WITH PLUG	WITH GREASE FITTING	WITH ADAPTER FITTING			A	B	C	D	H	K	L	N		
15/16	TFT-15TC	TFT-15TC-1	TFT-15TC-2	2-015TC	2801	3 3/4	3	2 3/4	11/16	1 1/2	1 7/16	1 15/16	9/16	3/8	1.6
1	TFT-16TC	TFT-16TC-1	TFT-16TC-2	2-1TC	12459	95.3	76.2	69.9	17.5	38.1	36.5	49.2	14.3		0.73
1 1/8	TFT-18TC	TFT-18TC-1	TFT-18TC-2	2-12TC	4381 19487	4 7/16 112.7	3 9/16 90.5	3 1/4 82.6	13/16 20.6	1 5/8 41.3	1 9/16 39.7	2 3/16 55.6	5/8 15.9	3/8	2.3 1.04
1 3/16	TFT-19TC	TFT-19TC-1	TFT-19TC-2	2-13TC											
1 1/4	TFT-20RT*	TFT-20RT*	TFT-20RT*	1-14T											
1 1/4	TFT-20TC	TFT-20TC-1	TFT-20TC-2	2-14TC	5782	4 7/8	3 15/16	3 11/16	7/8	1 13/16	1 3/4	2 7/16	11/16	3/8	3
					25718	123.8	100.0	93.7	22.2	46.0	44.5	61.9	175		1.36
1 3/8	TFT-22TC	TFT-22TC-1	TFT-22TC-2	2-16TC	5782	4 7/8	3 15/16	3 11/16	7/8	1 13/16	1 3/4	2 9/16	11/16	3/8	3
1 7/16	TFT-23TC	TFT-23TC-1	TFT-23TC-2	2-17TC	25718	123.8	100.0	93.7	22.2	46.0	44.5	65.1	175		1.36

For standard duty SKWEZLOC Locking Collar Bearing inserts, see page G-93.
 *1 1/4 Reduced not available with contact seal, felt only.

Metric dimensions for reference only.
 Not all parts are available from stock. Please contact customer service for availability (800) 626-2120.
 For more information on bearing capabilities outside of our standard offering, please contact Application Engineering (800) 626-2033.