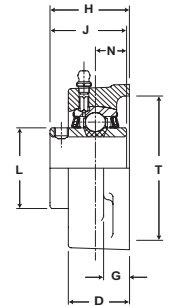
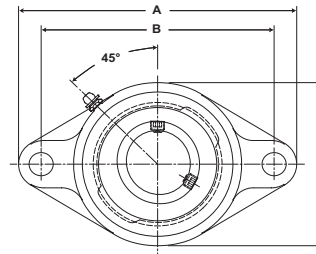




- Duty:** Standard
- Rolling Elements:** Ball
- Housing:** Cast Iron Two Bolt Flange
- Self Alignment:** +/- 2 Degrees
- Lock:** Setscrew
- Seal:** Felt
- Optional Seal:** Contact
- Temperature:** -20° to 220°F



SFT Series Standard Duty Two-Bolt Flange Units - Setscrew Locking

| BORE DIAMETER | | PART No. | BEARING INSERT No. | BASIC DYNAMIC RATING lb/N | DIMENSIONS inch / mm | | | | | | | | | | BOLT SIZE | UNIT Wt. lb/kg | |
|---------------|----|----------|--------------------|---------------------------|----------------------|---------|--------|---------|-------|--------|---------|-------|---------|--------|-----------|----------------|--|
| inch | mm | | | | A | B | C | D | G | H | J | N | L | T CORE | | | |
| 1/2 | | SFT-8 | 2-08 | | | | | | | | | | | | | | |
| 9/16 | | SFT-9 | 2-09 | 2611 | 3 7/8 | 3 | 2 5/16 | 59/64 | 7/16 | 1 9/32 | 1 7/32 | 1/2 | 1 3/16 | 2 | 3/8 | 1.2 | |
| 5/8 | | SFT-10 | 2-010 | 11614 | 98.4 | 76.2 | 58.7 | 23.4 | 11.1 | 32.5 | 31.0 | 12.7 | 30.2 | 50.8 | | .54 | |
| 11/16 | | SFT-11 | 2-011 | | | | | | | | | | | | | | |
| 3/4 | | SFT-12 | 2-012 | 2611 | 4 13/32 | 3 17/32 | 2 3/8 | 59/64 | 7/16 | 1 9/32 | 1 7/32 | 1/2 | 1 3/16 | 2 | 3/8 | 1.2 | |
| | 20 | SFT-204 | 5204 | 11614 | 111.9 | 89.7 | 60.3 | 23.4 | 11.1 | 32.5 | 31.0 | 12.7 | 30.2 | 50.8 | | .54 | |
| 13/16 | | SFT-13 | 2-013 | | | | | | | | | | | | | | |
| 7/8 | | SFT-14 | 2-014 | | | | | | | | | | | | | | |
| 15/16 | | SFT-15 | 2-015 | 2801 | 4 7/8 | 3 57/64 | 2 3/4 | 1 1/32 | 17/32 | 1 7/16 | 1 3/8 | 9/16 | 1 3/8 | 2 3/8 | 7/16 | 1.6 | |
| 1 | | SFT-16 | 2-1 | 12459 | 123.8 | 98.8 | 69.9 | 26.2 | 13.5 | 36.5 | 34.9 | 14.3 | 34.9 | 60.3 | | .73 | |
| | 25 | SFT-205 | 5205 | | | | | | | | | | | | | | |
| 1 1/16 | | SFT-17 | 2-11 | | | | | | | | | | | | | | |
| 1 1/8 | | SFT-18 | 2-12 | | | | | | | | | | | | | | |
| 1 3/16 | | SFT-19 | 2-13 | 4381 | 5 9/16 | 4 19/32 | 3 1/4 | 1 11/64 | 17/32 | 1 9/16 | 1 1/2 | 5/8 | 1 19/32 | 2 7/8 | 7/16 | 2.2 | |
| 1 1/4 | | SFT-20R | 1-14 | 19487 | 141.3 | 116.7 | 82.6 | 29.8 | 13.5 | 39.7 | 38.1 | 15.9 | 40.5 | 73.0 | | 1.00 | |
| | 30 | SFT-206 | 5206 | | | | | | | | | | | | | | |
| 1 1/4 | | SFT-20 | 2-14 | | | | | | | | | | | | | | |
| 1 5/16 | | SFT-21 | 2-15 | | | | | | | | | | | | | | |
| 1 3/8 | | SFT-22 | 2-16 | 5782 | 6 1/8 | 5 1/8 | 3 3/4 | 1 11/32 | 9/16 | 1 3/4 | 1 11/16 | 11/16 | 1 55/64 | 3 5/16 | 1/2 | 3.2 | |
| 1 7/16 | | SFT-23 | 2-17 | 25718 | 155.6 | 130.2 | 95.3 | 34.1 | 14.3 | 44.5 | 42.9 | 17.5 | 47.2 | 84.1 | | 1.45 | |
| | 35 | SFT-207 | 5207 | | | | | | | | | | | | | | |
| 1 1/2 | | SFT-24 | 2-18 | | | | | | | | | | | | | | |
| 1 9/16 | | SFT-25 | 2-19 | 7340 | 6 3/4 | 5 21/32 | 4 1/8 | 1 1/2 | 9/16 | 2 1/64 | 1 15/16 | 3/4 | 2 1/16 | 3 1/2 | 1/2 | 4.5 | |
| | 40 | SFT-208 | 5208 | 32648 | 171.5 | 143.7 | 104.8 | 38.1 | 14.3 | 51.2 | 49.2 | 19.1 | 52.4 | 88.9 | | 2.04 | |
| 1 5/8 | | SFT-26 | 2-110 | | | | | | | | | | | | | | |
| 1 11/16 | | SFT-27 | 2-111 | 7901 | 7 1/16 | 5 27/32 | 4 3/8 | 1 9/16 | 9/16 | 2 3/64 | 1 15/16 | 3/4 | 2 19/64 | 3 7/8 | 9/16 | 5 | |
| 1 3/4 | | SFT-28 | 2-112 | 35144 | 179.4 | 148.4 | 111.1 | 39.7 | 14.3 | 52.0 | 49.2 | 19.1 | 58.3 | 98.4 | | 2.27 | |
| | 45 | SFT-209 | 5209 | | | | | | | | | | | | | | |
| 1 13/16 | | SFT-29 | 2-113 | | | | | | | | | | | | | | |
| 1 7/8 | | SFT-30 | 2-114 | | | | | | | | | | | | | | |
| 1 15/16 | | SFT-31 | 2-115 | 7889 | 7 7/16 | 6 3/16 | 4 9/16 | 1 9/16 | 9/16 | 2 5/32 | 2 1/32 | 3/4 | 2 15/32 | 4 | 9/16 | 5.4 | |
| 2 | | SFT-32R | 1-2 | 35090 | 188.9 | 157.2 | 115.9 | 39.7 | 14.3 | 54.8 | 51.6 | 19.1 | 62.7 | 101.6 | | 2.45 | |
| | 50 | SFT-210 | 5210 | | | | | | | | | | | | | | |
| 2 | | SFT-32 | 2-2 | | | | | | | | | | | | | | |
| 2 1/8 | | SFT-34 | 2-22 | 9752 | 8 1/2 | 7 1/4 | 5 1/4 | 1 3/4 | 13/16 | 2 5/16 | 2 3/16 | 7/8 | 2 23/32 | 4 1/4 | 5/8 | 8.4 | |
| 2 3/16 | | SFT-35 | 2-23 | 43377 | 215.9 | 184.2 | 133.4 | 44.5 | 20.6 | 58.7 | 55.6 | 22.2 | 69.1 | 108.0 | | 3.81 | |
| | 55 | SFT-211 | 5211 | | | | | | | | | | | | | | |

For Standard Duty Bearing Inserts-Single Lock see page G-92.

Metric dimensions for reference only.

Not all parts are available from stock. Please contact customer service for availability (800) 626-2120.

For more information on bearing capabilities outside of our standard offering, please contact Application Engineering (800) 626-2093.