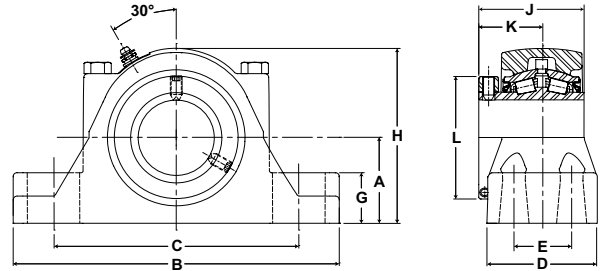


# RPB-CR Series Mounted Tapered Roller Bearings



- Rolling Elements:** Tapered Roller
- Housing:** Fluoropolymer Coated Cast Iron Four Bolt Pillow Block
- Self Alignment:** +/- 3 Degrees
- Lock:** Setscrew, Single Lock Collar
- Seal:** Single Lip Contact
- Temperature:** -20° to 220° F
- Grease:** Sealmaster GoldPlex-FG



## RPBA-CR Series Four-Bolt Base Pillow Blocks - Single Lock Collar

BORE DIAMETER		STANDARD SEAL PART No.	BASIC DYNAMIC RATING lb/N	APPROX. Wt lb/kg	DIMENSIONS inch/mm										BOLT SIZE	
inch	mm				A	B	C		D	E	G	H	J	K		L
						MIN.	MAX.									
2 1/4		RPBA 204-C4 CR	9030 40165	22.4 10.2	2 3/4 69.9	10 3/8 263.5	7 3/4 196.9	8 3/4 222.3	3 1/2 88.9	1 7/8 476	1 5/8 41.3	5 5/8 142.9	3 5/16 84.1	2 50.8	3 15/16 100.0	5/8
2 7/16		RPBA 207-C4 CR														
2 1/2	60	RPBA 208-C4 CR														
	65	RPBA 60MM-C4 CR RPBA 65MM-C4 CR														
2 11/16		RPBA 211-C4 CR	9630 42834	31.5 14.3	3 1/8 79.4	11 3/4 298.5	8 3/4 222.3	10 254.0	3 3/4 95.3	2 1/8 54.0	1 3/4 44.5	6 3/8 161.9	3 11/16 93.7	2 1/2 63.5	4 23/32 119.9	3/4
2 3/4		RPBA 212-C4 CR														
2 15/16		RPBA 215-C4 CR														
3	70	RPBA 300-C4 CR														
	75	RPBA 70MM-C4 CR RPBA 75MM-C4 CR														
3 3/16		RPBA 303-C4 CR	15320 68143	59.8 27.1	3 3/4 95.3	13 3/4 349.3	10 9/16 268.3	11 1/2 292.1	4 1/2 114.3	2 3/8 60.3	2 1/16 52.4	7 3/4 196.9	4 3/16 106.4	2 1/2 63.5	5 7/16 138.1	7/8
3 1/4		RPBA 304-C4 CR														
3 7/16		RPBA 307-C4 CR														
3 1/2	80	RPBA 308-C4 CR														
	85	RPBA 80MM-C4 CR														
	90	RPBA 85MM-C4 CR														
	95	RPBA 90MM-C4 CR														
	95	RPBA 95MM-C4 CR														
3 15/16		RPBA 315-C4 CR	20980 93319	76.9 34.9	4 1/4 108.0	15 1/4 387.4	11 279.4	13 330.2	4 1/2 114.3	2 1/4 57.2	2 7/16 61.9	8 5/8 219.1	5 1/4 133.4	3 1/8 79.4	5 15/16 150.8	5/8
4		RPBA 400-C4 CR														
	100	RPBA 100MM-C4 CR														
	105	RPBA 105MM-C4 CR														
4 7/16		RPBA 407-C4 CR	25750 114536	95.6 43.4	4 3/4 120.7	16 1/2 419.1	11 3/4 298.5	13 7/8 352.4	4 5/8 117.5	2 1/2 63.5	2 7/8 73.0	9 5/8 244.5	5 1/2 139.7	3 3/8 85.7	6 1/2 165.1	3/4
4 1/2		RPBA 408-C4 CR														
	110	RPBA 110MM-C4 CR														
	115	RPBA 115MM-C4 CR														
4 15/16		RPBA 415-C4 CR	35520 157993	143.6 65.1	5 1/2 139.7	18 1/2 469.9	13 1/2 342.9	15 7/8 403.2	5 1/8 130.2	2 3/4 69.9	3 1/8 79.4	11 279.4	6 13/64 157.6	3 5/8 92.1	7 5/16 185.7	7/8
5		RPBA 500-C4 CR														
	120	RPBA 120MM-C4 CR														
	125	RPBA 125MM-C4 CR														

Metric dimensions for reference only.  
 Not all parts are available from stock. Please contact customer service for availability (800) 626-2120.  
 For more information on bearing capabilities outside of our standard offering, please contact Application Engineering (800) 626-2093.