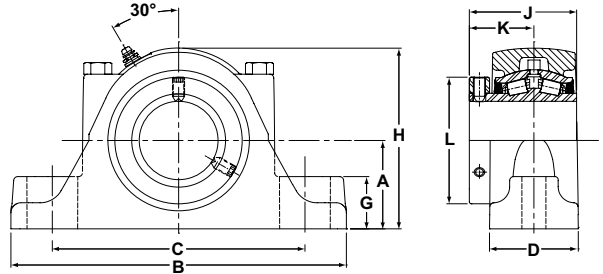




- Rolling Elements:** Tapered Roller
- Housing:** Cast Iron Two Bolt Pillow Block
- Self Alignment:** +/- 3 Degrees
- Lock:** Setscrew, Single Collar
- Seal:** Felt
- Optional Seal:** Single Lip Contact
- Temperature:** -20°F to 220°F



RPBA Series Two-Bolt Base Pillow Blocks - Single Lock Collar

BORE DIAMETER		PART N	BEARING INSERT NO.	BASIC DYNAMIC RATING lb/N	DIMENSIONS inch / mm											UNIT WT. lb/kg		
inch	mm				A	B	C		D	G	H	J	K	L	BOLT SIZE			
						MIN.	MAX.											
1 3/16		RPBA-103-2	RCIA-103	2975	1 1/2	6 1/4	4 9/16	4 15/16	1 7/8	7/8	3 1/8	2 3/8	1 3/8	2 1/4	1/2	4.8		
1 1/4		RPBA-104-2	RCIA-104	13233	38.1	158.8	115.9	125.4	476	22.2	79.4	60.3	34.9	57.2		2.18		
1 3/8	35	RPBA-106-2	RCIA-106	4760 21174	1 7/8	7 1/4	5 5/16	5 15/16	2 1/16	1 1/8	3 13/16	2 17/32	1 1/2	2 5/8	1/2	7.7 3.49		
		RPBA-35MM-2	RCI-35MM		476	184.2	134.9	150.8	52.4	28.6	96.8	64.3	38.1	66.7				
1 7/16		RPBA-107-2	RCIA-107															
1 1/2	40	RPBA-108-2	RCIA-108	6140 27312	2 1/8	7 3/4	5 9/16	6 7/16	2 5/16	1 1/4	4 3/8	2 27/32	1 11/16	2 7/8	1/2	10.9 4.94		
		RPBA-40MM-2	RCI-40MM		54.0	196.9	141.3	163.5	58.7	31.8	111.1	72.2	42.9	73.0				
1 5/8		RPBA-110-2	RCIA-110															
1 11/16		RPBA-111-2	RCIA-111															
1 3/4	45	RPBA-112-2	RCIA-112	8070 35897	2 1/4 57.2	8 7/8 225.4	6 5/16 160.3	7 3/16 182.6	2 7/16 61.9	1 1/4 31.8	4 5/8 117.5	2 61/64 75.0	1 3/4 44.5	3 1/4 82.6	5/8	13.2 5.99		
1 15/16		RPBA-115-2	RCIA-115															
2		RPBA-50MM-2	RCI-50MM															
	55	RPBA-200-2	RCIA-200															
2 3/16		RPBA-55MM-2	RCI-55MM	8570	2 1/2	9 5/8	6 11/16	7 15/16	2 9/16	1 7/16	5 1/8	3 1/8	1 7/8	3 5/8	5/8	15.7 7.12		
	60	RPBA-203-2	RCIA-203	38121	63.5	244.5	169.9	201.6	65.1	36.5	130.2	79.4	47.6	92.1				
2 1/4		RPBA-204-2	RCIA-204	9030 40167	2 3/4 69.9	10 3/8 263.5	6 15/16 176.2	8 11/16 220.7	2 3/4 69.9	1 5/8 41.3	5 5/8 142.9	3 5/16 84.1	2 50.8	3 15/16 100.0	5/8	20.7 9.39		
2 7/16		RPBA-207-2	RCIA-207															
2 1/2		RPBA-208-2	RCIA-208															
	RPBA-65MM-2	RCI-65MM																
2 11/16	70	RPBA-211-2	RCIA-211	9630 42836	3 1/8 79.4	11 3/4 298.5	8 1/16 204.8	9 11/16 246.1	3 76.2	1 3/4 44.5	6 3/8 161.9	3 11/16 93.7	2 1/4 57.2	4 23/32 119.9	3/4	29.3 13.29		
2 3/4		RPBA-212-2	RCIA-212															
		RPBA-70MM-2	RCI-70MM															
2 15/16		RPBA-215-2	RCIA-215															
		RPBA-75MM-2	RCI-75MM															
3	RPBA-300-2	RCIA-300																
3 3/16	80	RPBA-80MM-2	RCI-80MM	15320 68147	3 3/4 95.3	13 3/4 349.3	10 1/8 257.2	11 1/4 285.8	4 1/8 104.8	2 50.8	7 3/4 196.9	4 3/16 106.4	2 1/2 63.5	5 7/16 138.1	7/8	56 25.40		
3 1/4		RPBA-303-2	RCIA-303															
		RPBA-304-2	RCIA-304															
3 7/16		RPBA-85MM-2	RCI-85MM															
		RPBA-307-2	RCIA-307															
3 1/2		RPBA-308-2	RCIA-308															
	RPBA-90MM-2	RCI-90MM																
	95	RPBA-95MM-2	RCI-95MM															

Metric dimensions for reference only.

Not all parts are available from stock. Please contact customer service for availability (800) 626-2120.

For more information on bearing capabilities outside of our standard offering, please contact Application Engineering (800) 626-2093.