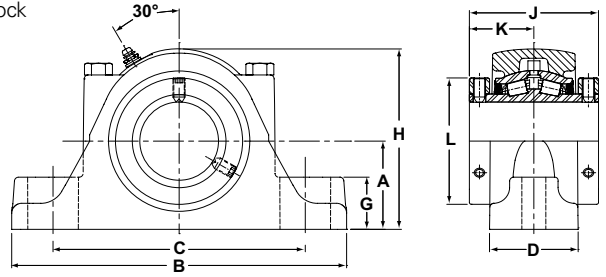




- Rolling Elements:** Tapered Roller
- Housing:** Cast Iron Two Bolt Pillow Block
- Self Alignment:** +/- 3 Degrees
- Lock:** Setscrew, Double Collar
- Seal:** Felt
- Optional Seal:** Single Lip Contact
- Temperature:** -20°F to 220°F



Mtd. Tapered Bearings



RPB Series Two-Bolt Base Pillow Blocks

BORE DIAMETER		PART No.	BEARING INSERT NO.	BASIC DYNAMIC RATING lb/N	DIMENSIONS inch / mm										BOLT SIZE	UNIT WT. lb/kg	
inch	mm				A	B	C		D	G	H	J	K	L			
						MIN.	MAX.										
1 3/16		RPB-103-2	RCI-103	2975	1 1/2	6 1/4	4 9/16	4 15/16	1 7/8	7/8	3 1/8	2 3/4	1 3/8	2 1/4	1/2	4.8	
1 1/4		RPB-104-2	RCI-104	13233	38.1	158.8	115.9	125.4	47.6	22.2	79.4	69.9	34.9	57.2		2.18	
1 3/8	35	RPB-106-2	RCI-106	4760	1 7/8	7 1/4	5 5/16	5 15/16	2 1/16	1 1/8	3 13/16	3	1 1/2	2 5/8	1/2	7.7	
1 7/16		RPB-35MM-2	RCI-35MM	21174	47.6	184.2	134.9	150.8	52.4	28.6	96.8	76.2	76.2	66.7		3.5	
1 7/16		RPB-107-2	RCI-107														
1 1/2	40	RPB-108-2	RCI-108	6140	2 1/8	7 3/4	5 9/16	6 7/16	2 5/16	1 1/4	4 3/8	3 3/8	1 11/16	2 7/8	1/2	10.9	
1 5/8		RPB-40MM-2	RCI-40MM	27312	54.0	196.9	141.3	163.5	58.7	31.8	111.1	85.7	42.9	73.0		4.94	
1 5/8		RPB-110-2	RCI-110														
1 11/16		RPB-111-2	RCI-111														
1 3/4	45	RPB-112-2	RCI-112														
1 15/16		RPB-45MM-2	RCI-45MM	8070	2 1/4	8 7/8	6 5/16	7 3/16	2 7/16	1 1/4	4 5/8	3 1/2	1 3/4	3 1/4	5/8	13.2	
	50	RPB-115-2	RCI-115	35897	57.2	225.4	160.3	182.6	61.9	31.8	117.5	88.9	44.5	82.6		5.99	
		RPB-50MM-2	RCI-50MM														
		RPB-200-2	RCI-200														
2 3/16	55	RPB-55MM-2	RCI-55MM	8570	2 1/2	9 5/8	6 11/16	7 15/16	2 9/16	1 7/16	5 1/8	3 3/4	1 7/8	3 5/8	5/8	15.7	
		RPB-203-2	RCI-203	38121	63.5	244.5	169.9	201.6	65.1	36.5	130.2	95.3	47.6	92.1		7.12	
2 1/4	60	RPB-204-2	RCI-204														
2 7/16		RPB-60MM-2	RCI-60MM	9030	2 3/4	10 3/8	6 15/16	8 11/16	2 3/4	1 5/8	5 5/8	4	2	3 15/16	5/8	20.7	
2 1/2		RPB-207-2	RCI-207	40167	69.9	263.5	176.2	220.7	69.9	41.3	142.9	101.6	50.8	100.0		9.39	
	65	RPB208-2	RCI-208														
		RPB-65MM-2	RCI-65MM														
2 11/16	70	RPB-211-2	RCI-211														
2 3/4		RPB-212-2	RCI-212														
2 15/16		RPB-70MM-2	RCI-70MM	9630	3 1/8	11 3/4	8 1/16	9 11/16	3	1 3/4	6 3/8	4 1/2	2 1/4	4 23/32	3/4	29.3	
	75	RPB-215-2	RCI-215	42836	79.4	298.5	204.8	246.1	76.2	44.5	161.9	114.3	57.2	119.9		13.29	
		RPB-75MM-2	RCI-75MM														
		RPB-300-2	RCI-300														
3 3/16	80	RPB-80MM-2	RCI-80MM														
3 1/4		RPB-303-2	RCI-303														
		RPB-304-2	RCI-304														
3 7/16	85	RPB-85MM-2	RCI-85MM	15320	3 3/4	13 3/4	10 1/8	11 1/4	4 1/8	2	7 3/4	5	2 1/2	5 7/16	7/8	56.0	
3 1/2		RPB-307-2	RCI-307	65147	95.3	349.3	257.2	285.8	104.8	52.4	196.9	127.0	63.5	138.1		25.40	
		RPB-308-2	RCI-308														
	90	RPB-90MM-2	RCI-90MM														
	95	RPB-95MM-2	RCI-95MM														

Metric dimensions for reference only.

Not all parts are available from stock. Please contact customer service for availability (800) 626-2120.

For more information on bearing capabilities outside of our standard offering, please contact Application Engineering (800) 626-2093.