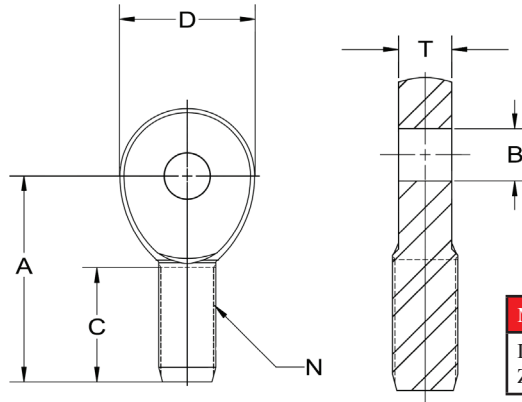


SOLID ROD ENDS

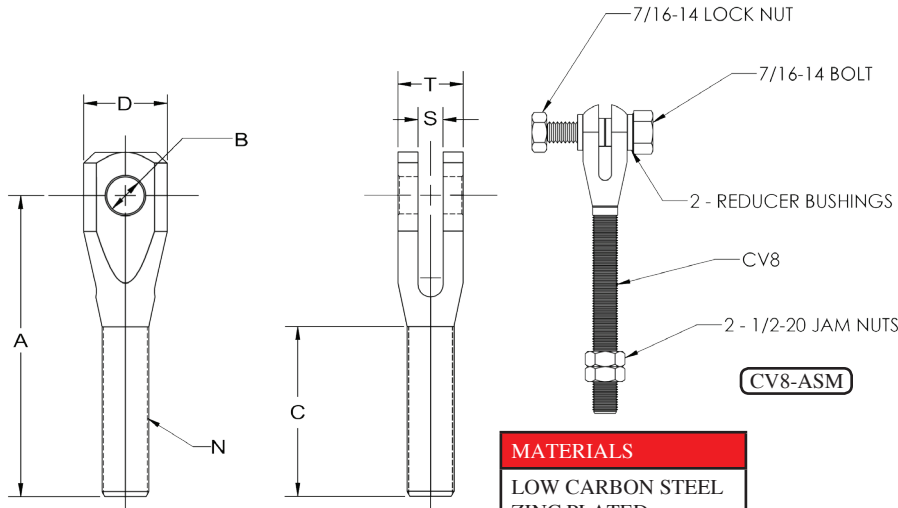
1-PIECE, METAL TO METAL



MATERIALS
LOW CARBON STEEL
ZINC PLATED

MALE PART NO.	BORE & THREAD	B DIA.	D DIA.	T WIDTH	A LENGTH	C LENGTH	N THREAD	ULT. STATIC RADIAL LOAD (lbs.)
	REF.	+0.0025 -.0005	+0.010 -.010	+0.005 -.005	+0.015 -.015	+0.062 -.031	UNF 3a	
RD1	5/8 X 5/8	.6250	1.500	.750	2.625	1.625	5/8-18	16,600
RD2	5/8 X 3/4	.6250	1.750	.875	2.875	1.750	3/4-16	18,500
RD3	3/4 X 3/4	.7500	1.750	.875	2.875	1.750	3/4-16	18,500
RD4	1/2 X 1/2	.5000	1.312	.625	2.437	1.500	1/2-20	12,100
RD5	1/2 X 3/4	.5000	1.750	.875	2.875	1.750	3/4-16	18,500
RD8	1/2 X 3/4	.5000	1.500	.750	2.625	1.625	3/4-16	18,500

CLEVIS



MATERIALS
LOW CARBON STEEL
ZINC PLATED
CHROMATE TREATED

PART NO.	BORE & THREAD	B DIA.	D DIA.	T WIDTH	A LENGTH	C LENGTH	S SLOT	N THREAD
	REF.	+0.0025 -.0005	+0.010 -.010	+0.005 -.005	+0.015 -.015	+0.062 -.031	+0.005 -.005	UNF 3a
CV1	3/8 X 5/8	.3750	1.125	.825	3.375	2.000	.375	5/8-18
CV2	1/2 X 5/8	.5000	1.125	.825	3.375	2.000	.375	5/8-18
CV3	3/8 X 3/4	.3750	1.125	.825	3.375	2.000	.375	3/4-16
CV4	1/2 X 3/4	.5000	1.125	.825	3.375	2.000	.375	3/4-16
CV5	3/8 X 1/2	.3750	.875	.655	3.012	1.700	.250	1/2-20
CV8	9/16 X 1/2	.5625	1.125	.875	5.563	3.900	.250	1/2-20