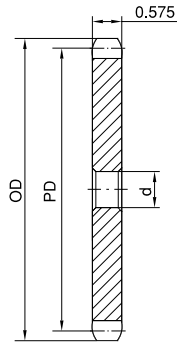
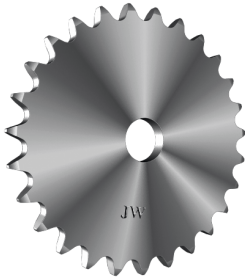
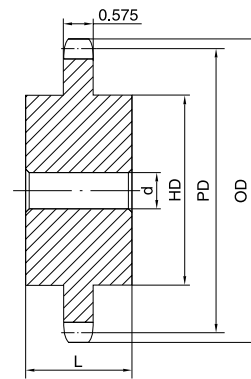


# No. 80 STOCK SPROCKETS

## 1" Pitch



Type A



Type C

## Single Type A

No. of Teeth	Part No.	OD	PD	d	App. Wt. (Lbs.)	No. of Teeth	Part No.	OD	PD	d	App. Wt. (Lbs.)
9	80A9H	3.350	2.924	15/16	0.8	40	80A40	13.310	12.746	1-3/16	18.9
10	80A10H	3.680	3.236	15/16	1.0	41	80A41	13.630	13.064	1-1/4	21.0
11	80A11H	4.010	3.550	15/16	1.3	42	80A42	13.940	13.382	1-1/4	21.8
12	80A12H	4.330	3.864	15/16	1.5	43	80A43	14.260	13.700	1-1/4	23.6
13	80A13H	4.660	4.179	15/16	1.8	44	80A44	14.580	14.018	1-1/4	24.3
14	80A14H	4.980	4.494	15/16	2.2	45	80A45	14.900	14.336	1-1/4	25.2
15	80A15H	5.300	4.810	15/16	2.5	46	80A46	15.220	14.654	1-1/4	26.0
16	80A16H	5.630	5.126	15/16	2.9	47	80A47	15.540	14.972	1-1/4	26.4
17	80A17H	5.950	5.442	15/16	3.3	48	80A48	15.860	15.290	1-1/4	27.8
18	80A18H	6.270	5.759	15/16	3.7	49	80A49	16.180	15.608	1-1/4	28.9
19	80A19H	6.590	6.076	15/16	4.1	50	80A50	16.500	15.926	1-1/4	30.9
20	80A20H	6.910	6.392	15/16	4.7	51	80A51	16.810	16.244	1-1/4	32.2
21	80A21H	7.240	6.710	15/16	4.9	52	80A52	17.130	16.562	1-1/4	33.0
22	80A22H	7.560	7.027	15/16	5.5	53	80A53	17.450	16.880	1-1/4	34.9
23	80A23H	7.880	7.344	15/16	6.3	54	80A54	17.770	17.198	1-1/4	36.6
24	80A24H	8.200	7.661	15/16	6.7	55	80A55	18.090	17.516	1-1/4	37.5
25	80A25H	8.520	7.979	15/16	7.2	56	80A56	18.410	17.835	1-1/4	39.4
26	80A26H	8.840	8.296	1-3/16	7.8	57	80A57	18.730	18.153	1-1/4	40.4
27	80A27H	9.160	8.614	1-3/16	8.6	58	80A58	19.040	18.471	1-1/4	41.3
28	80A28H	9.480	8.931	1-3/16	9.3	59	80A59	19.360	18.789	1-1/4	42.9
29	80A29H	9.800	9.249	1-3/16	9.8	60	80A60	19.680	19.107	1-1/4	45.3
30	80A30H	10.110	9.567	1-3/16	10.7	65	80A65	21.270	20.698	1-1/4	52.2
31	80A31H	10.430	9.884	1-3/16	11.3	70	80A70	22.870	22.289	1-1/2	59.8
32	80A32H	10.750	10.202	1-3/16	12.1	72	80A72	23.500	22.926	1-1/2	65.7
33	80A33H	11.070	10.520	1-3/16	13.6	76	80A76	24.780	24.198	1-1/2	70.2
34	80A34H	11.390	10.838	1-3/16	14.3	80	80A80	26.050	25.471	1-1/2	79.6
35	80A35H	11.710	11.156	1-3/16	14.8	84	80A84	27.330	26.744	1-1/2	86.1
36	80A36H	12.030	11.471	1-3/16	16.1	90	80A90	29.240	28.654	1-1/2	101.0
37	80A37	12.350	11.792	1-3/16	16.8	96	80A96	31.150	30.563	1-1/2	120.0
38	80A38	12.670	12.110	1-3/16	17.2	112	80A112	36.240	35.655	1-1/2	165.0
39	80A39	12.990	12.428	1-3/16	17.9						

## Single Type C

No. of Teeth	Part No.	OD	PD	d		HD	L	App. Wt. (Lbs.)	No. of Teeth	Part No.	OD	PD	d		HD	L	App. Wt. (Lbs.)
				Min.	Max.								Min.	Max.			
11	80C11	4.010	3.550	1	1-5/8	2-29/32*	2-3/8	3.8	70	80C70	22.870	22.289	1-1/2	4-1/4	6-1/4	3-1/2	75.7
12	80C12	4.330	3.864	1	1-7/8	3-1/8*	2-3/8	4.3	72	80C72	23.500	22.926	1-1/2	4-1/4	6-1/4	3-1/2	81.4
13	80C13	4.660	4.179	1	2	3-1/64	2-3/8	5.3	76	80C76	24.780	24.198	1-1/2	4-1/4	6-1/4	3-1/2	87.8
14	80C14	4.980	4.494	1	2-1/4	3-11/32	2-3/8	6.4	80	80C80	26.050	25.471	1-1/2	4-1/4	6-1/4	3-1/2	89.9
15	80C15	5.300	4.810	1	2-1/2	3-13/16	2-3/8	7.7	84	80C84	27.330	26.744	1-1/2	4-1/4	6-1/4	3-1/2	99.2
16	80C16	5.630	5.126	1	2-3/4	4	2-3/8	8.8	90	80C90	29.240	28.654	1-1/2	4-1/4	6-1/4	3-1/2	106.0
									96	80C96	31.150	30.563	1-1/2	4-1/4	6-1/4	3-1/2	117.0
									112	80C112	36.240	35.655	1-1/2	4-1/4	6-1/4	3-1/2	154.0

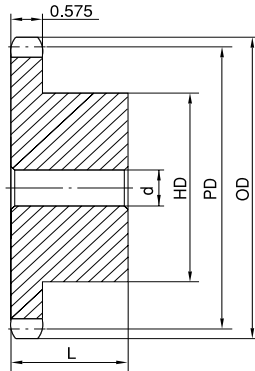
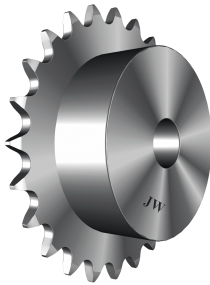
H - Denotes hardened teeth.

Maximum bores shown, accommodate standard keyway with setscrew positioned over keyway.

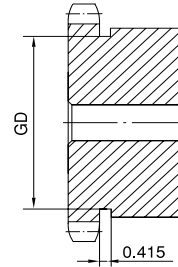
\* Hub has recessed groove allowing for chain clearance. Groove depth is the same as Single Type B; see page 27.

# STOCK SPROCKETS No. 80

1" Pitch



Type B



Type B

## Single Type B

No. of Teeth	Part No.	OD	PD	d		HD	L	App. Wt. (Lbs.)	No. of Teeth	Part No.	OD	PD	d		HD	L	App. Wt. (Lbs. )
				Min.	Max.								Min.	Max.			
8	80B8H	3.010	2.613	1	1	1-15/16*	1-5/8	1.4	37	80B37	12.350	11.792	1-3/16	3-1/4	4-3/4	2	23.8
9	80B9H	3.350	2.924	1	1-5/16	2-1/4*	1-5/8	1.6	38	80B38	12.670	12.110	1-3/16	3-1/4	4-3/4	2	24.7
10	80B10H	3.680	3.236	1	1-1/2	2-9/16*	1-5/8	2.2	39	80B39	12.990	12.428	1-3/16	3-1/4	4-3/4	2	25.6
11	80B11H	4.010	3.550	1	1-5/8	2-13/16*	1-5/8	3.2	40	80B40	13.310	12.746	1-3/16	3-1/4	4-3/4	2	26.7
12	80B12H	4.330	3.864	1	1-7/8	3-1/8*	1-5/8	3.4	41	80B41	13.630	13.064	1-1/4	3-1/4	4-3/4	2	27.8
13	80B13H	4.660	4.179	1	2	3	1-1/2	3.5	42	80B42	13.940	13.382	1-1/4	3-1/4	4-3/4	2	28.7
14	80B14H	4.980	4.494	1	2-1/4	3-1/4	1-1/2	4.1	43	80B43	14.260	13.700	1-1/4	3-1/4	4-3/4	2	29.4
15	80B15H	5.300	4.810	1	2-1/2	3-13/16	1-1/2	5.3	44	80B44	14.580	14.018	1-1/4	3-1/4	4-3/4	2	29.9
16	80B16H	5.630	5.126	1	2-3/4	4	1-1/2	5.9	45	80B45	14.900	14.336	1-1/4	3-1/4	4-3/4	2	31.4
17	80B17H	5.950	5.442	1	2-3/4	4	1-1/2	6.6	46	80B46	15.220	14.654	1-1/4	3-1/4	4-3/4	2	33.1
18	80B18H	6.270	5.759	1	2-3/4	4-1/4	1-1/2	7.3	47	80B47	15.540	14.972	1-1/4	3-1/4	4-3/4	2	34.0
19	80B19H	6.590	6.076	1	2-3/4	4-1/4	1-1/2	7.8	48	80B48	15.860	15.290	1-1/4	3-1/4	4-3/4	2	35.5
20	80B20H	6.910	6.392	1	2-3/4	4-1/4	1-1/2	8.4	49	80B49	16.180	15.608	1-1/4	3-1/4	4-3/4	2	35.8
21	80B21H	7.240	6.710	1	2-3/4	4-1/4	1-3/4	9.4	50	80B50	16.500	15.926	1-1/4	3-1/4	4-3/4	2	37.3
22	80B22H	7.560	7.027	1	2-3/4	4-1/4	1-3/4	10.0	51	80B51	16.810	16.244	1-1/4	3-1/4	4-3/4	2	38.6
23	80B23H	7.880	7.344	1	2-3/4	4-1/4	1-3/4	10.7	52	80B52	17.130	16.562	1-1/4	3-1/4	4-3/4	2	39.4
24	80B24H	8.200	7.661	1	2-3/4	4-1/4	1-3/4	11.3	53	80B53	17.450	16.880	1-1/4	3-1/4	4-3/4	2	41.3
25	80B25H	8.520	7.979	1	2-3/4	4-1/4	1-3/4	11.9	54	80B54	17.770	17.198	1-1/4	3-1/2	5-1/4	2	44.7
26	80B26H	8.840	8.296	1-1/4	3-1/4	4-3/4	2	14.3	55	80B55	18.090	17.516	1-1/4	3-1/2	5-1/4	2	45.6
27	80B27H	9.160	8.614	1-1/4	3-1/4	4-3/4	2	15.4	56	80B56	18.410	17.835	1-1/4	3-1/2	5-1/4	2	47.5
28	80B28H	9.480	8.931	1-1/4	3-1/4	4-3/4	2	16.0	57	80B57	18.730	18.153	1-1/4	3-1/2	5-1/4	2	48.5
29	80B29H	9.800	9.249	1-3/16	3-1/4	4-3/4	2	17.1	58	80B58	19.040	18.471	1-1/4	3-1/2	5-1/4	2	50.5
30	80B30H	10.110	9.567	1-3/16	3-1/4	4-3/4	2	17.4	59	80B59	19.360	18.789	1-1/4	3-1/2	5-1/4	2	52.1
31	80B31H	10.430	9.884	1-3/16	3-1/4	4-3/4	2	18.7	60	80B60	19.680	19.107	1-1/4	3-1/2	5-1/4	2	54.5
32	80B32H	10.750	10.202	1-3/16	3-1/4	4-3/4	2	19.5	65	80B65	21.270	20.698	1-1/4	3-1/2	5-1/4	2	61.8
33	80B33H	11.070	10.520	1-3/16	3-1/4	4-3/4	2	19.6									
34	80B34H	11.390	10.838	1-3/16	3-1/4	4-3/4	2	21.3									
35	80B35H	11.710	11.156	1-3/16	3-1/4	4-3/4	2	22.1									
36	80B36H	12.030	11.471	1-3/16	3-1/4	4-3/4	2	23.1									

H - Denotes hardened teeth.

Maximum bores shown, accommodate standard keyway with setscrew positioned over keyway.

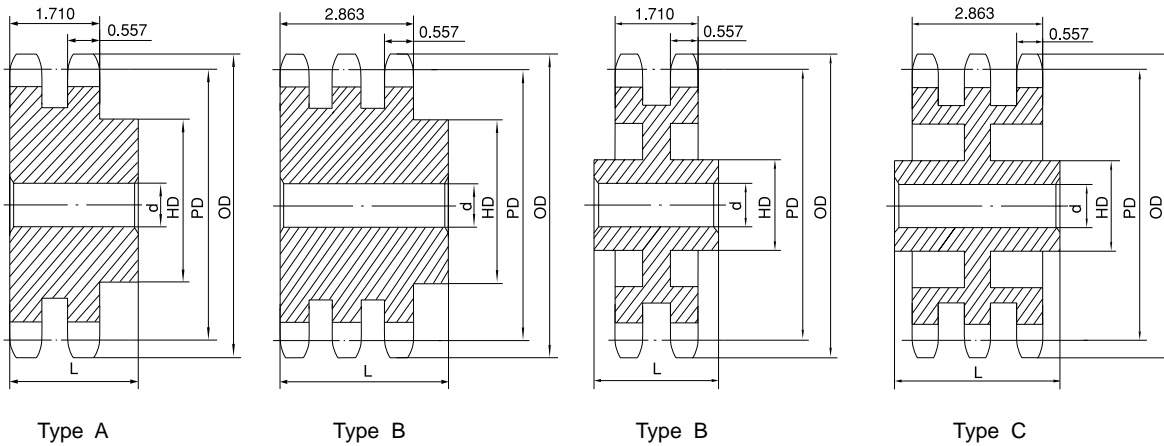
\* Hub has recessed groove allowing for chain clearance. GD are as follows:

8 Teeth = 1.437in    9 Teeth = 1.756in    10 Teeth = 2.067in

11 Teeth = 2.381in    12 Teeth = 2.695in

# No. 80 STOCK SPROCKETS

## 1" Pitch



### Double Type B & C

### Triple Type B & C

No. of Teeth	OD	PD	Double Type B & C							Triple Type B & C						
			Part No.	Type	d		HD	L	App. Wt. (Lbs.)	Part No.	Type	d		HD	L	App. Wt. (Lbs.)
					Min.	Max.						Min.	Max.			
10	3.680	3.236	D80B10H	B	1	1-1/2	2-9/16*	2-3/4	3.6	T80B10H	B	1	1-1/2	2-9/16	3-5/8	4.4
11	4.010	3.550	D80B11H	B	1	1-3/4	2-1/2	2-1/2	4.0	T80B11H	B	1	1-3/4	2-1/2	3-5/8	5.9
12	4.330	3.864	D80B12H	B	1	1-7/8	2-27/32	2-1/2	5.1	T80B12H	B	1	1-7/8	2-27/32	3-5/8	7.5
13	4.660	4.179	D80B13H	B	1	2-1/4	3-5/32	2-1/2	6.3	T80B13H	B	1	2-1/4	3-5/32	3-5/8	9.2
14	4.980	4.494	D80B14H	B	1	2-3/8	3-15/32	2-1/2	7.6	T80B14H	B	1	2-3/8	3-15/32	3-5/8	11.0
15	5.300	4.810	D80B15H	B	1	2-1/2	3-51/64	2-1/2	9.0	T80B15H	B	1	2-1/2	3-51/64	3-5/8	13.1
16	5.630	5.126	D80B16H	B	1	2-3/4	4	2-3/4	11.0	T80B16H	B	1	2-3/4	4	3-7/8	15.8
17	5.950	5.442	D80B17H	B	1	3	4-27/64	2-3/4	13.2	T80B17H	B	1	3	4-27/64	3-7/8	18.6
18	6.270	5.759	D80B18H	B	1	3-1/4	4-47/64	2-3/4	15.0	T80B18H	B	1	3-1/4	4-47/64	3-7/8	21.2
19	6.590	6.076	D80B19H	B	1	3-5/16	5	2-3/4	17.0	T80B19H	B	1	3-5/16	5	3-7/8	23.7
20	6.910	6.392	D80B20H	B	1	3-5/16	5	2-3/4	18.2	T80B20H	B	1	3-5/16	5	3-7/8	26.0
21	7.240	6.710	D80B21H	B	1	3-5/16	5	2-3/4	19.6	T80B21H	B	1	3-5/16	5	3-7/8	28.4
22	7.560	7.027	D80B22H	B	1	3-5/16	5	2-3/4	21.0	T80B22H	B	1	3-5/16	5	3-7/8	31.0
23	7.880	7.344	D80B23H	B	1	3-5/16	5	2-3/4	22.8	T80B23H	B	1	3-5/16	5	3-7/8	33.6
24	8.200	7.661	D80B24H	B	1	3-1/2	5-1/4	2-3/4	25.1	T80B24H	B	1	3-1/2	5-1/4	3-7/8	37.1
25	8.520	7.979	D80B25H	B	1	3-1/2	5-1/4	3	28.3	T80B25H	B	1	3-1/2	5-1/4	3-7/8	40.1
26	8.840	8.296	D80B26	B	1	3-1/2	5-1/4	3	29.9	T80B26	B	1	3-1/2	5-1/4	3-7/8	42.9
30	10.110	9.567	D80B30	B	1-1/4	3-3/4	5-3/4	3	39.5	T80B30	B	1-1/4	3-3/4	5-3/4	4-1/4	54.5
32	10.750	10.202	D80B32	B	1-1/4	3-3/4	5-3/4	3	43.8	T80B32	B	1-1/4	3-3/4	5-3/4	4-1/4	64.5
35	11.710	11.156	D80B35	B	1-1/4	3-3/4	5-3/4	3	49.1	T80B35	B	1-1/4	3-3/4	5-3/4	4-1/4	79.5
36	12.030	11.471	D80B36	B	1-1/4	3-3/4	5-3/4	3-1/8	54.2	T80B36	B	1-1/4	3-3/4	5-3/4	4-1/4	83.9
42	13.940	13.382	D80B42	B	1-1/4	3-3/4	5-3/4	3-1/8	71.5	T80C42	C	1-1/4	3-13/16	6	4-1/2	84.9
45	14.900	14.336	D80B45	B	1-1/4	3-3/4	5-3/4	3-1/8	73.5	T80C45	C	1-1/4	3-13/16	6	4-1/2	92.4
52	17.130	16.562	D80C52	C	1-1/2	3-3/4	5-3/4	3-3/4	78.4	T80C52	C	1-1/2	3-13/16	6	4-1/2	107.0
60	19.680	19.107	D80C60	C	1-1/2	3-3/4	5-3/4	3-3/4	93.3	T80C60	C	1-1/2	4-1/4	6-1/4	4-3/4	128.0
68	22.230	21.653	D80C68	C	1-1/2	3-13/16	6	4	96.2	T80C68	C	1-1/2	4-1/4	6-1/4	4-3/4	140.0
76	24.780	24.198	D80C76	C	1-1/2	3-13/16	6	4	113.0	T80C76	C	1-1/2	4-1/4	6-1/4	4-3/4	165.0
95	30.830	30.245	D80C95	C	1-1/2	4	6	4-1/4	165.0	T80C95	C	1-1/2	4-1/2	6-3/4	5	240.0

H - Denotes hardened teeth.

Maximum bores shown, accommodate standard keyway with setscrew positioned over keyway.

\* Hub has recessed groove allowing for chain clearance. Groove depth is the same as Single Type B; see page 27.