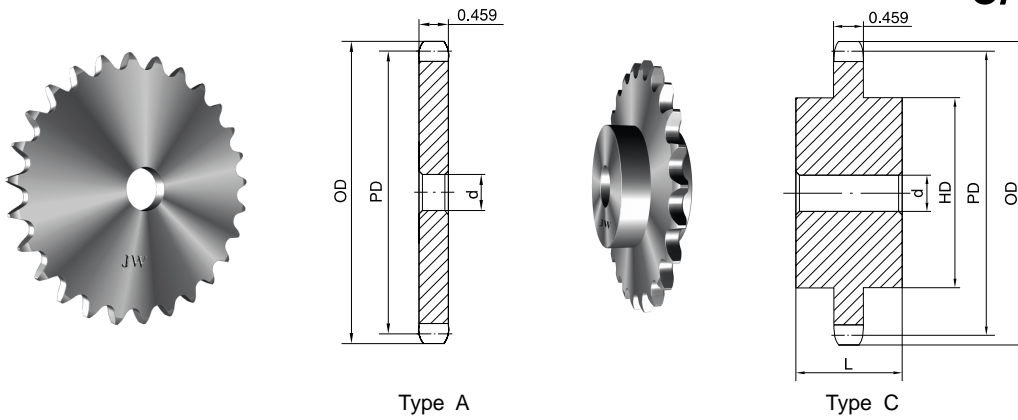


STOCK SPROCKETS **No. 60**

3/4" Pitch



Type A

Type C

Single Type A

No. of Teeth	Part No.	OD	PD	d	App. Wt. (Lbs.)	No. of Teeth	Part No.	OD	PD	d	App. Wt. (Lbs.)
8	60A8H	2.260	1.960	1/2	0.33	41	60A41	10.220	9.798	15/16	9.10
9	60A9H	2.510	2.193	1/2	0.42	42	60A42	10.460	10.037	15/16	9.74
10	60A10H	2.760	2.427	3/4	0.44	43	60A43	10.700	10.275	15/16	9.84
11	60A11H	3.000	2.663	3/4	0.60	44	60A44	10.940	10.514	15/16	10.76
12	60A12H	3.250	2.898	3/4	0.72	45	60A45	11.180	10.752	15/16	11.08
13	60A13H	3.490	3.134	3/4	0.85	46	60A46	11.420	10.991	15/16	11.50
14	60A14H	3.740	3.371	3/4	0.99	47	60A47	11.650	11.229	15/16	12.32
15	60A15H	3.980	3.608	3/4	1.10	48	60A48	11.890	11.468	15/16	12.42
16	60A16H	4.220	3.845	3/4	1.24	49	60A49	12.130	11.706	15/16	12.92
17	60A17H	4.460	4.082	3/4	1.44	50	60A50	12.370	11.945	15/16	13.98
18	60A18H	4.700	4.319	3/4	1.62	51	60A51	12.610	12.183	15/16	14.58
19	60A19H	4.950	4.557	3/4	1.84	52	60A52	12.850	12.422	15/16	14.60
20	60A20H	5.190	4.794	3/4	2.12	53	60A53	13.090	12.660	15/16	15.84
21	60A21H	5.430	5.033	3/4	2.28	54	60A54	13.330	12.899	15/16	15.92
22	60A22H	5.670	5.270	3/4	2.48	55	60A55	13.570	13.137	1-1/4	16.96
23	60A23H	5.910	5.508	3/4	2.68	56	60A56	13.810	13.376	1-1/4	17.60
24	60A24H	6.150	5.746	23/32	3.00	57	60A57	14.040	13.615	1-1/4	17.62
25	60A25H	6.390	5.984	23/32	3.34	58	60A58	14.280	13.853	1-1/4	19.00
26	60A26H	6.630	6.222	23/32	3.54	59	60A59	14.520	14.092	1-1/4	19.20
27	60A27H	6.870	6.461	23/32	3.96	60	60A60	14.760	14.330	1-1/4	20.02
28	60A28H	7.110	6.698	23/32	4.14	64	60A64	15.720	15.285	1-1/4	23.00
29	60A29H	7.350	6.937	23/32	4.40	65	60A65	15.960	15.524	1-1/4	23.24
30	60A30H	7.590	7.175	23/32	4.78	66	60A66	16.190	15.762	1-1/4	24.42
31	60A31H	7.830	7.413	23/32	5.24	68	60A68	16.670	16.240	1-1/4	25.54
32	60A32H	8.070	7.652	23/32	5.52	70	60A70	17.150	16.717	1-1/4	27.20
33	60A33H	8.300	7.890	15/16	5.86	72	60A72	17.630	17.195	1-1/4	28.90
34	60A34H	8.540	8.129	15/16	6.16	76	60A76	18.580	18.149	1-1/4	32.34
35	60A35H	8.780	8.367	15/16	6.78	80	60A80	19.540	19.103	1-1/4	40.18
36	60A36H	9.020	8.606	15/16	6.82	84	60A84	20.490	20.058	1-1/4	43.44
37	60A37	9.260	8.844	15/16	7.52	90	60A90	21.930	21.491	1-1/4	45.50
38	60A38	9.500	9.083	15/16	7.84	96	60A96	23.360	22.922	1-1/4	52.02
39	60A39	9.740	9.321	15/16	8.28	112	60A112	27.180	26.741	1-1/4	70.80
40	60A40	9.980	9.560	15/16	8.56						

Single Type C

No. of Teeth	Part No.	OD	PD	d		HD	L	App. Wt. (Lbs.)
				Min.	Max.			
12	60C12	3.250	2.898	3/4	1-3/8	2-3/8*	2	2.25
13	60C13	3.490	3.134	3/4	1-1/2	2-11/32	2	2.75
14	60C14	3.740	3.371	3/4	1-3/4	2-9/16	2	3.19
15	60C15	3.980	3.608	3/4	1-7/8	2-7/8	2	3.70
16	60C16	4.220	3.845	3/4	2	3-1/16	2	4.19
17	60C17	4.460	4.082	3/4	2-1/4	3-1/4	2	4.81
18	60C18	4.700	4.319	3/4	2-3/8	3-1/2	2	5.62

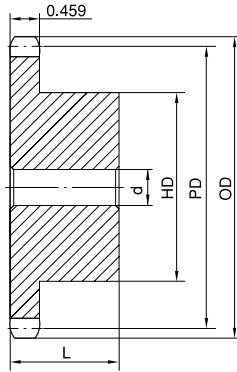
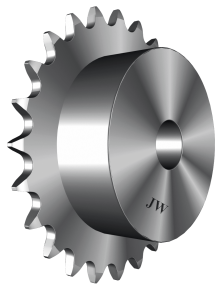
H - Denotes hardened teeth.

Maximum bores shown, accommodate standard keyway with setscrew positioned over keyway.

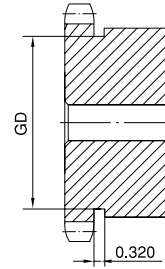
* Hub has recessed groove allowing for chain clearance. Groove depth is the same as Single Type B; see page 22.

No. 60 STOCK SPROCKETS

3/4" Pitch



Type B



Type B

Single Type B

No. of Teeth	Part No.	OD	PD	d		HD	L	App. Wt. (Lbs.)	No. of Teeth	Part No.	OD	PD	d		HD	L	App. Wt. (Lbs.)
				Min.	Max.								Min.	Max.			
8	60B8H	2.260	1.960	5/8	5/8	1-15/32*	1-1/4	0.54	41	60B41	10.220	9.798	1	2-3/4	4-1/4	1-1/4	12.14
9	60B9H	2.510	2.193	3/4	7/8	1-9/16*	1-1/4	0.64	42	60B42	10.460	10.037	1	2-3/4	4-1/4	1-1/4	12.74
10	60B10H	2.760	2.427	3/4	1-1/8	1-15/16*	1-1/4	0.99	43	60B43	10.700	10.275	1	2-3/4	4-1/4	1-1/4	13.00
11	60B11H	3.000	2.663	3/4	1-5/16	2-1/16*	1-1/4	1.16	44	60B44	10.940	10.514	15/16	2-3/4	4-1/4	1-1/4	13.88
12	60B12H	3.250	2.898	3/4	1-3/8	2-3/8*	1-1/4	1.47	45	60B45	11.180	10.752	15/16	2-3/4	4-1/4	1-1/4	13.98
13	60B13H	3.490	3.134	3/4	1-1/2	2-11/32	1-1/4	1.66	46	60B46	11.420	10.991	15/16	2-3/4	4-1/4	1-1/4	14.60
14	60B14H	3.740	3.371	3/4	1-3/4	2-9/16	1-1/4	2.00	47	60B47	11.650	11.229	15/16	2-3/4	4-1/4	1-1/4	15.00
15	60B15H	3.980	3.608	3/4	1-7/8	2-7/8	1-1/4	2.51	48	60B48	11.890	11.468	15/16	2-3/4	4-1/4	1-1/4	15.42
16	60B16H	4.220	3.845	3/4	2	3-1/16	1-1/4	2.81	49	60B49	12.130	11.706	15/16	2-3/4	4-1/4	1-1/4	15.90
17	60B17H	4.460	4.082	3/4	2-1/4	3-1/4	1-1/4	3.22	50	60B50	12.370	11.945	15/16	2-3/4	4-1/4	1-1/4	16.40
18	60B18H	4.700	4.319	3/4	2-3/8	3-1/2	1-1/4	3.72	51	60B51	12.610	12.183	15/16	2-3/4	4-1/4	1-1/4	16.90
19	60B19H	4.950	4.557	3/4	2-3/8	3-1/2	1-1/4	3.92	52	60B52	12.850	12.422	15/16	2-3/4	4-1/4	1-1/4	17.43
20	60B20H	5.190	4.794	3/4	2-5/8	3-7/8	1-1/4	4.63	53	60B53	13.090	12.660	15/16	2-3/4	4-1/4	1-1/4	17.99
21	60B21H	5.430	5.033	3/4	2-3/4	4	1-1/4	5.00	54	60B54	13.330	12.899	15/16	2-3/4	4-1/4	1-3/4	20.60
22	60B22H	5.670	5.270	3/4	2-3/4	4	1-1/4	5.25	55	60B55	13.570	13.137	1-1/4	2-3/4	4-1/4	1-3/4	21.14
23	60B23H	5.910	5.508	3/4	2-3/4	4	1-1/4	5.48	56	60B56	13.810	13.376	1-1/4	2-3/4	4-1/4	1-3/4	21.88
24	60B24H	6.150	5.746	3/4	2-3/4	4	1-1/4	5.78	57	60B57	14.040	13.615	1-1/4	2-3/4	4-1/4	1-3/4	22.26
25	60B25H	6.390	5.984	3/4	2-3/4	4	1-1/4	6.13	58	60B58	14.280	13.853	1-1/4	2-3/4	4-1/4	1-3/4	22.80
26	60B26H	6.630	6.222	3/4	2-3/4	4	1-1/4	6.38	59	60B59	14.520	14.092	1-1/4	2-3/4	4-1/4	1-3/4	23.86
27	60B27H	6.870	6.461	3/4	2-3/4	4	1-1/4	6.72	60	60B60	14.760	14.330	1-1/4	2-3/4	4-1/4	1-3/4	25.22
28	60B28H	7.110	6.698	3/4	2-3/4	4	1-1/4	6.88	64	60B64	15.720	15.285	1-1/4	2-3/4	4-1/4	1-3/4	27.40
29	60B29H	7.350	6.937	3/4	2-3/4	4	1-1/4	7.28	65	60B65	15.960	15.524	1-1/4	2-3/4	4-1/4	1-3/4	28.92
30	60B30H	7.590	7.175	3/4	2-3/4	4	1-1/4	7.58	66	60B66	16.190	15.762	1-1/4	2-3/4	4-1/4	1-3/4	30.10
31	60B31H	7.830	7.413	3/4	2-3/4	4	1-1/4	7.72	68	60B68	16.670	16.240	1-1/4	2-3/4	4-1/4	1-3/4	30.38
32	60B32H	8.070	7.652	3/4	2-3/4	4	1-1/4	8.26	70	60B70	17.150	16.717	1-1/4	2-3/4	4-1/4	1-3/4	31.98
33	60B33H	8.300	7.890	1	2-3/4	4	1-1/4	8.42	72	60B72	17.630	17.195	1-1/4	2-3/4	4-1/4	2	34.18
34	60B34H	8.540	8.129	1	2-3/4	4	1-1/4	8.80	76	60B76	18.580	18.149	1-1/4	2-3/4	4-1/4	2	38.06
35	60B35H	8.780	8.367	1	2-3/4	4	1-1/4	9.04	80	60B80	19.540	19.103	1-1/4	2-3/4	4-1/4	2	41.88
36	60B36H	9.020	8.606	1	2-3/4	4	1-1/4	9.60	84	60B84	20.490	20.058	1-1/4	3-1/4	4-3/4	2	46.46
37	60B37	9.260	8.844	1	2-3/4	4	1-1/4	10.24	90	60B90	21.930	21.491	1-1/4	3-5/16	5	2-1/4	63.20
38	60B38	9.500	9.083	1	2-3/4	4-1/4	1-1/4	10.84	96	60B96	23.360	22.922	1-1/4	3-3/4	5-1/2	2-1/4	65.08
39	60B39	9.740	9.321	1	2-3/4	4-1/4	1-1/4	11.36	112	60B112	27.180	26.741	1-1/4	3-3/4	5-1/2	2-1/4	81.78
40	60B40	9.980	9.560	1	2-3/4	4-1/4	1-1/4	11.50									

H - Denotes hardened teeth.

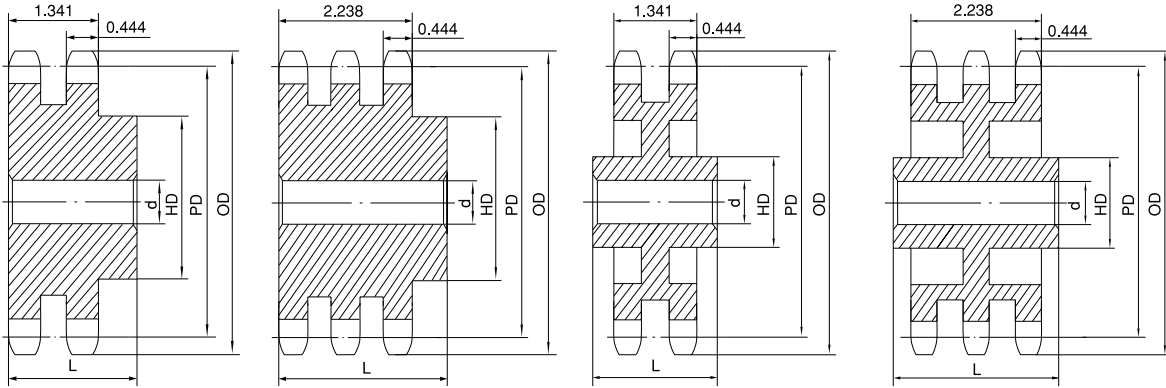
Maximum bores shown, accommodate standard keyway with setscrew positioned over keyway.

* Hub has recessed groove allowing for chain clearance. GD are as follows:

8 Teeth = 1.075in 9 Teeth = 1.307in 10 Teeth = 1.555in
 11 Teeth = 1.803in 12 Teeth = 2.026in

STOCK SPROCKETS **No. 60**

3/4" Pitch



Type B

Type B

Type C

Type C

Double Type B & C

Triple Type B & C

No. of Teeth	OD	PD	Double Type B & C							Triple Type B & C						
			Part No.	Type	d		HD	L	App. Wt. (Lbs.)	Part No.	Type	d		HD	L	App. Wt. (Lbs.)
					Min.	Max.						Min.	Max.			
11	3.000	2.663	D60B11H	B	1	1-1/4	1-13/16	2-1/8	1.62	T60B11H	B	1	1-1/4	1-13/16	3	2.5
12	3.250	2.898	D60B12H	B	1	1-7/16	2-1/8	2-1/8	2.20	T60B12H	B	1	1-7/16	2-1/8	3	3.3
13	3.490	3.134	D60B13H	B	1	1-1/2	2-1/4	2-1/8	2.60	T60B13H	B	1	1-1/2	2-1/4	3	3.9
14	3.740	3.371	D60B14H	B	1	1-3/4	2-1/2	2-1/8	3.24	T60B14H	B	1	1-3/4	2-1/2	3	4.5
15	3.980	3.608	D60B15H	B	1	1-7/8	2-13/16	2-1/8	4.00	T60B15H	B	1	1-7/8	2-13/16	3	5.4
16	4.220	3.845	D60B16H	B	1	2	3	2-1/8	4.62	T60B16H	B	1	2	3	3	6.5
17	4.460	4.082	D60B17H	B	1	2-1/4	3-1/4	2-1/8	5.40	T60B17H	B	1	2-1/4	3-1/4	3	7.7
18	4.700	4.319	D60B18H	B	1	2-3/8	3-1/2	2-1/8	6.24	T60B18H	B	1	2-3/8	3-1/2	3	8.5
19	4.950	4.557	D60B19H	B	1	2-1/2	3-11/16	2-1/8	7.00	T60B19H	B	1	2-1/2	3-11/16	3	10.0
20	5.190	4.794	D60B20H	B	1	2-1/2	3-3/4	2-1/8	7.72	T60B20H	B	1	2-1/2	3-3/4	3	11.2
21	5.430	5.033	D60B21H	B	1	2-3/4	4-1/8	2-1/8	8.82	T60B21H	B	1	2-3/4	4-1/8	3	12.5
22	5.670	5.270	D60B22H	B	1	2-3/4	4-1/4	2-1/8	9.70	T60B22H	B	1	2-3/4	4-1/4	3	13.2
23	5.910	5.508	D60B23H	B	1	2-3/4	4-1/4	2-1/8	10.30	T60B23H	B	1	2-3/4	4-1/4	3	14.6
24	6.150	5.746	D60B24H	B	1	2-3/4	4-1/4	2-1/8	11.14	T60B24H	B	1	2-3/4	4-1/4	3	15.8
25	6.390	5.984	D60B25H	B	1	2-3/4	4-1/4	2-1/8	12.00	T60B25H	B	1	2-3/4	4-1/4	3	17.0
26	6.630	6.222	D60B26	B	1	2-3/4	4-1/4	2-1/8	12.70	T60B26	B	1	2-3/4	4-1/4	3	18.6
30	7.590	7.175	D60B30	B	1	2-3/4	4-1/4	2-1/8	16.40	T60B30	B	1	2-3/4	4-1/4	3	23.2
32	8.070	7.652	D60B32	B	1-1/4	3	4-1/2	2-3/8	19.52	T60B32	B	1	2-3/4	4-1/4	3	30.7
35	8.780	8.367	D60B35	B	1-1/4	3	4-1/2	2-3/8	22.80	T60B35	B	1-1/4	3	4-1/2	3-1/4	34.5
36	9.020	8.606	D60B36	B	1-1/4	3	4-1/2	2-3/8	23.82	T60B36	B	1-1/4	3	4-1/2	3-1/4	37.0
40	9.980	9.560	D60B40	B	1-1/4	3-1/4	4-3/4	2-3/4	30.84	T60B40	B	1-1/4	3-1/4	4-3/4	3-5/8	45.3
42	10.460	10.037	D60B42	B	1-1/4	3-1/4	4-3/4	2-3/4	33.10	T60B42	B	1-1/4	3-1/4	4-3/4	3-5/8	49.0
45	11.180	10.750	D60B45	B	1-1/4	3-1/4	4-3/4	2-3/4	37.10	T60B45	B	1-1/4	3-1/4	4-3/4	3-5/8	57.0
52	12.850	12.422	D60B52	B	1-1/4	3-1/4	4-3/4	2-3/4	48.70	T60C52	C	1-1/4	3-1/4	4-3/4	3-1/2	73.0
60	14.760	14.330	D60B60	B	1-1/4	3-1/4	4-3/4	2-3/4	63.10	T60C60	C	1-1/4	3-1/4	4-3/4	3-1/2	76.6
68	16.670	16.240	D60C68	C	1-1/4	3-5/16	5	3	53.70	T60C68	C	1-1/4	3-1/4	5	3-1/2	80.0
72	17.630	17.195	D60C72	C	1-1/4	3-5/16	5	3	53.74	T60C72	C	1-1/4	3-1/4	5	3-1/2	82.0
76	18.580	18.149	D60C76	C	1-1/2	3-5/16	5	3	60.30	T60C76	C	1-1/2	3-3/4	5-1/2	3-1/2	85.0
95	23.120	22.683	D60C95	C	1-1/4	3-3/4	5-1/2	3-1/2	87.14	T60C95	C	1-1/2	3-3/4	5-1/2	4	105.0

H - Denotes hardened teeth.

Maximum bores shown, accommodate standard keyway with setscrew positioned over keyway.