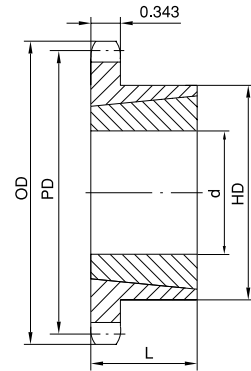


# TAPER-BUSHED SPROCKETS **No. 50**

## 5/8" Pitch



Type B

### Single Taper-Bushed

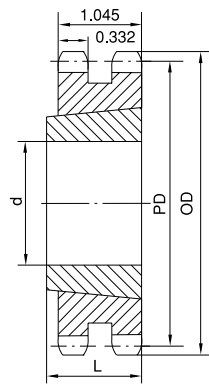
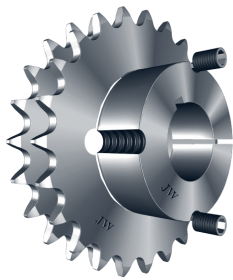
No. of Teeth	Part No.	Bushing	OD	PD	Max. Bore d	HD	L	App. Wt. (Lbs.)	
								Sprocket	Bushing
12	50BTB12H	1008	2.708	2.415	1	1-15/16*	7/8	0.5	0.3
13	50BTB13H	1008	2.911	2.612	1	1-13/16	7/8	0.5	0.3
14	50BTB14H	1008	3.113	2.809	1	1-15/16	7/8	0.6	0.3
15	50BTB15H	1210	3.315	3.006	1-1/4	2-15/32*	1	0.7	0.6
16	50BTB16H	1610	3.517	3.204	1-5/8	2-25/32*	1	0.7	0.9
17	50BTB17H	1610	3.719	3.401	1-5/8	2-25/32*	1	0.8	0.9
18	50BTB18H	1610	3.920	3.599	1-5/8	2-25/32	1	0.9	0.9
19	50BTB19H	1610	4.120	3.797	1-5/8	3	1	1.3	0.9
20	50BTB20H	1610	4.321	3.995	1-5/8	3-1/4	1	1.6	0.9
21	50BTB21H	1610	4.522	4.193	1-5/8	3	1	1.5	0.9
22	50BTB22H	1610	4.722	4.392	1-5/8	3	1	1.6	0.9
23	50BTB23H	2012	4.922	4.590	2	3-9/16	1-1/4	2.0	1.7
24	50BTB24H	2012	5.122	4.788	2	3-9/16	1-1/4	2.2	1.7
25	50BTB25H	2012	5.322	4.987	2	3-9/16	1-1/4	2.4	1.7
26	50BTB26H	2012	5.522	5.185	2	3-9/16	1-1/4	2.5	1.7
27	50BTB27H	2012	5.723	5.384	2	3-9/16	1-1/4	2.6	1.7
28	50BTB28H	2012	5.922	5.582	2	3-9/16	1-1/4	2.8	1.7
30	50BTB30H	2012	6.321	5.979	2	3-9/16	1-1/4	3.2	1.7
32	50BTB32H	2012	6.721	6.376	2	3-9/16	1-1/4	3.6	1.7
35	50BTB35H	2012	7.319	6.972	2	3-9/16	1-1/4	4.2	1.7
36	50BTB36H	2012	7.519	7.171	2	3-9/16	1-1/4	4.3	1.7
40	50BTB40	2012	8.316	7.966	2	3-9/16	1-1/4	5.2	1.7
42	50BTB42	2012	8.715	8.363	2	3-9/16	1-1/4	5.9	1.7
45	50BTB45	2012	9.313	8.960	2	3-9/16	1-1/4	6.5	1.7
48	50BTB48	2012	9.911	9.556	2	3-9/16	1-1/4	7.3	1.7
54	50BTB54	2012	11.106	10.749	2	3-9/16	1-1/4	9.0	1.7
60	50BTB60	2012	12.301	11.942	2	3-9/16	1-1/4	10.8	1.7
70	50BTB70	2517	14.292	13.931	2-1/2	4-1/4	1-3/4	14.0	3.5
72	50BTB72	2517	14.690	14.329	2-1/2	4-1/4	1-3/4	15.5	3.5
80	50BTB80	2517	16.282	15.920	2-1/2	4-1/4	1-3/4	19.5	3.5
84	50BTB84	2517	17.079	16.715	2-1/2	4-1/4	1-3/4	22.5	3.5
96	50BTB96	2517	19.466	19.102	2-1/2	4-1/4	1-3/4	29.0	3.5
112	50BTB112	2517	22.651	22.285	2-1/2	4-1/4	1-3/4	38.7	3.5

H - Denotes hardened teeth.

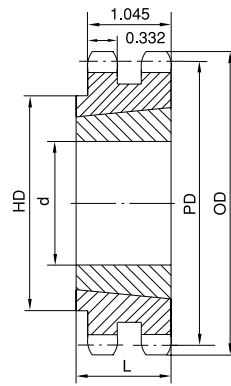
\*Hub has recessed groove allowing for chain clearance.

# No. 50 TAPER-BUSHED SPROCKETS

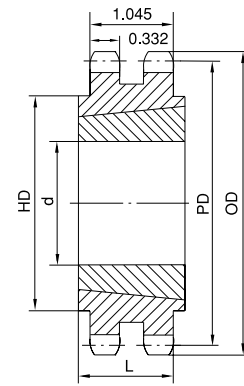
## 5/8" Pitch



Type A



Type B



Type C

## Double Taper-Bushed

No. of Teeth	Type	Part No.	Bushing	OD	PD	Max. Bore d	HD	L	App. Wt. (Lbs.)	
									Sprocket	Bushing
14	A	D50ATB14H	1008	3.113	2.809	1		7/8	0.8	0.3
15	A	D50ATB15H	1210	3.315	3.006	1-1/4		1	0.9	0.6
16	A	D50ATB16H	1210	3.517	3.204	1-1/4		1	1.1	0.6
17	A	D50ATB17H	1610	3.719	3.410	1-5/8		1	1.1	0.6
18	A	D50ATB18H	1610	3.920	3.599	1-5/8		1	1.3	0.9
19	A	D50ATB19H	1610	4.120	3.797	1-5/8		1	1.6	0.9
20	B	D50BTB20H	2012	4.321	3.995	2	3-1/4	1-1/4	1.5	1.7
21	B	D50BTB21H	2012	4.522	4.193	2	3-1/2	1-1/4	1.9	1.7
25	B	D50BTB25H	2012	5.322	4.987	2	4-9/32	1-1/4	3.8	1.7
30	B	D50BTB30	2517	6.321	5.979	2-1/2	5-9/32	1-3/4	7.5	3.5
36	C	D50CTB36	2517	7.519	7.171	2-1/2	4-1/4	1-3/4	9.4	3.5
42	C	D50CTB42	2517	8.715	8.363	2-1/2	4-1/4	1-3/4	13.4	3.5
48	C	D50CTB48	2517	9.911	9.556	2-1/2	4-1/4	1-3/4	18.6	3.5
52	C	D50CTB52	2517	10.707	10.351	2-1/2	4-3/8	1-3/4	22.2	3.5
60	C	D50CTB60	2517	12.301	11.942	2-1/2	4-3/8	1-3/4	30.3	3.5
68	C	D50CTB68	2517	13.893	13.533	2-1/2	4-3/8	1-3/4	39.4	3.5
76	C	D50CTB76	2517	15.486	15.124	2-1/2	4-3/8	1-3/4	41.2	3.5
84	C	D50CTB84	2517	17.079	16.715	2-1/2	4-3/8	1-3/4	45.3	3.5
95	C	D50CTB95	2517	19.267	18.903	2-1/2	4-3/8	1-3/4	58.8	3.5
102	C	D50CTB102	2517	20.661	20.295	2-1/2	4-3/8	1-3/4	67.1	3.5

H - Denotes hardened teeth.