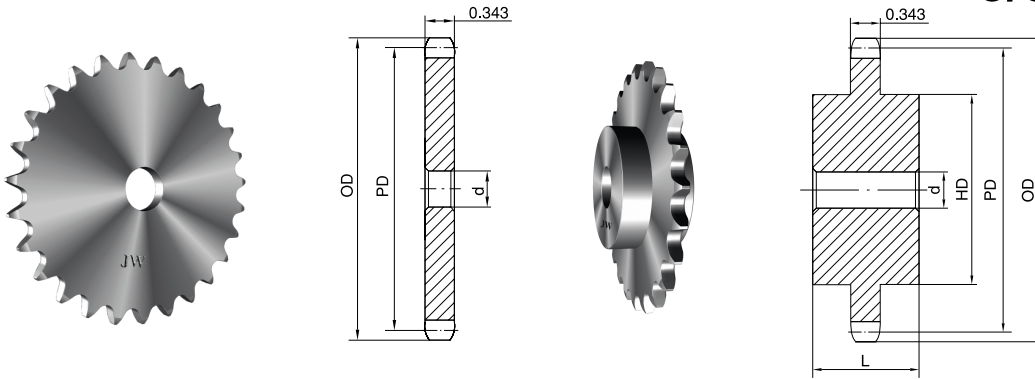


STOCK SPROCKETS **No. 50**

5/8" Pitch



Single Type A

Type A

Type C

No. of Teeth	Part No.	OD	PD	d	App. Wt. (Lbs.)	No. of Teeth	Part No.	OD	PD	d	App. Wt. (Lbs.)
10	50A10H	2.300	2.023	13/32	0.28	40	50A40	8.320	7.966	23/32	4.46
11	50A11H	2.500	2.219	13/32	0.31	41	50A41	8.520	8.165	23/32	4.86
12	50A12H	2.710	2.415	5/8	0.34	42	50A42	8.720	8.363	23/32	4.98
13	50A13H	2.910	2.612	5/8	0.42	43	50A43	8.910	8.562	23/32	5.24
14	50A14H	3.110	2.809	5/8	0.50	44	50A44	9.110	8.761	23/32	5.42
15	50A15H	3.320	3.006	5/8	0.54	45	50A45	9.310	8.960	23/32	5.92
16	50A16H	3.520	3.204	5/8	0.68	46	50A46	9.510	9.159	15/16	6.42
17	50A17H	3.720	3.401	5/8	0.76	47	50A47	9.710	9.357	15/16	6.50
18	50A18H	3.920	3.599	5/8	0.86	48	50A48	9.910	9.556	15/16	6.58
19	50A19H	4.120	3.797	5/8	0.94	49	50A49	10.110	9.755	15/16	7.06
20	50A20H	4.320	3.995	3/4	1.06	50	50A50	10.310	9.954	15/16	7.10
21	50A21H	4.520	4.194	3/4	1.12	51	50A51	10.510	10.153	15/16	7.32
22	50A22H	4.720	4.392	3/4	1.30	52	50A52	10.710	10.351	15/16	7.98
23	50A23H	4.920	4.590	3/4	1.44	53	50A53	10.910	10.550	15/16	8.08
24	50A24H	5.120	4.788	23/32	1.50	54	50A54	11.110	10.749	15/16	8.30
25	50A25H	5.320	4.987	23/32	1.62	55	50A55	11.310	10.948	15/16	8.56
26	50A26H	5.520	5.185	23/32	1.72	56	50A56	11.500	11.147	15/16	8.90
27	50A27H	5.720	5.384	23/32	1.96	57	50A57	11.700	11.346	15/16	9.38
28	50A28H	5.920	5.582	23/32	2.04	58	50A58	11.900	11.544	15/16	10.30
29	50A29H	6.120	5.781	23/32	2.36	59	50A59	12.100	11.743	15/16	10.50
30	50A30H	6.320	5.979	23/32	2.54	60	50A60	12.300	11.942	15/16	10.80
31	50A31H	6.520	6.178	23/32	2.80	65	50A65	13.300	12.936	15/16	10.90
32	50A32H	6.720	6.376	23/32	2.92	70	50A70	14.290	13.931	15/16	14.00
33	50A33H	6.920	6.575	23/32	3.14	72	50A72	14.690	14.329	15/16	15.24
34	50A34H	7.120	6.774	23/32	3.20	76	50A76	15.490	15.124	15/16	20.08
35	50A35H	7.320	6.972	23/32	3.34	80	50A80	16.280	15.920	15/16	21.00
36	50A36H	7.520	7.171	23/32	3.82	84	50A84	17.080	16.715	15/16	22.08
37	50A37	7.720	7.370	23/32	3.98	95	50A95	19.270	18.903	15/16	27.00
38	50A38	7.920	7.569	23/32	4.14	96	50A96	19.470	19.102	15/16	27.40
39	50A39	8.120	7.767	23/32	4.42	112	50A112	22.650	22.285	15/16	37.70

Single Type C

No. of Teeth	Part No.	OD	PD	d		HD	L	App. Wt. (Lbs.)
				Min.	Max.			
12	50C12	2.710	2.415	5/8	1-1/4	2*	1-5/8	1.25
13	50C13	2.910	2.612	5/8	1-5/16	1-7/8*	1-5/8	1.47
14	50C14	3.110	2.809	5/8	1-7/16	2-1/8*	1-5/8	1.69
15	50C15	3.320	3.006	5/8	1-1/2	2-3/8*	1-5/8	1.94
16	50C16	3.520	3.204	5/8	1-3/4	2-1/2	1-5/8	2.42
17	50C17	3.720	3.401	5/8	1-7/8	2-47/64	1-5/8	2.75
18	50C18	3.920	3.599	5/8	1-7/8	2-15/16	1-5/8	3.25
19	50C19	4.120	3.797	3/4	2	3-5/64	1-5/8	3.87
20	50C20	4.320	3.995	3/4	2	3	1-5/8	4.40

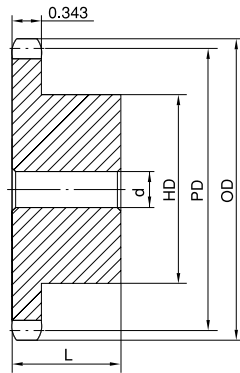
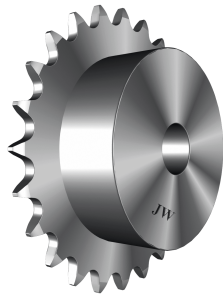
H - Denotes hardened teeth.

Maximum bores shown, accommodate standard keyway with setscrew positioned over keyway.

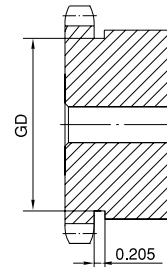
* Hub has recessed groove allowing for chain clearance. Groove depth is the same as Single Type B; see page 18.

No. 50 STOCK SPROCKETS

5/8" Pitch



Type B



Type B

Single Type B

No. of Teeth	Part No.	OD	PD	d		HD	L	App. Wt. (Lbs.)	No. of Teeth	Part No.	OD	PD	d		HD	L	App. Wt. (Lbs.)
				Min.	Max.								Min.	Max.			
8	50B8H	1.880	1.633	5/8	5/8	1-1/8*	1	0.25	40	50B40	8.320	7.966	3/4	2-1/4	3-1/4	1-1/4	6.50
9	50B9H	2.090	1.827	5/8	3/4	1-3/8*	1	0.36	41	50B41	8.520	8.165	3/4	2-1/4	3-1/4	1-1/4	6.64
10	50B10H	2.300	2.023	5/8	7/8	1-9/16*	1	0.48	42	50B42	8.720	8.363	3/4	2-1/4	3-1/4	1-1/4	6.96
11	50B11H	2.500	2.219	5/8	1	1-3/4*	1	0.64	43	50B43	8.910	8.562	3/4	2-1/4	3-1/4	1-1/4	7.06
12	50B12H	2.710	2.415	5/8	1-1/4	1-63/64*	1	0.83	44	50B44	9.110	8.761	3/4	2-1/4	3-1/4	1-1/4	7.58
13	50B13H	2.910	2.612	5/8	1-5/16	1-7/8	1	0.88	45	50B45	9.310	8.960	3/4	2-1/2	3-3/4	1-1/4	8.08
14	50B14H	3.110	2.809	5/8	1-7/16	2-1/8	1	1.13	46	50B46	9.510	9.159	3/4	2-1/2	3-3/4	1-1/4	8.22
15	50B15H	3.320	3.006	5/8	1-1/2	2-3/8	1	1.34	47	50B47	9.710	9.357	3/4	2-1/2	3-3/4	1-1/4	8.48
16	50B16H	3.520	3.204	5/8	1-3/4	2-1/2	1	1.51	48	50B48	9.910	9.556	1	2-1/2	3-3/4	1-1/4	9.28
17	50B17H	3.720	3.401	5/8	1-7/8	2-11/16	1	1.74	49	50B49	10.110	9.755	1	2-1/2	3-3/4	1-1/4	9.52
18	50B18H	3.920	3.599	5/8	1-7/8	2-7/8	1	2.00	50	50B50	10.310	9.954	1	2-1/2	3-3/4	1-1/4	9.78
19	50B19H	4.120	3.797	5/8	2	3	1	2.22	51	50B51	10.510	10.153	1	2-1/2	3-3/4	1-1/4	10.00
20	50B20H	4.320	3.995	3/4	2	3	1	2.28	52	50B52	10.710	10.351	1	2-1/2	3-3/4	1-1/4	10.24
21	50B21H	4.520	4.194	3/4	2	3	1	2.40	53	50B53	10.910	10.550	1	2-1/2	3-3/4	1-1/4	10.48
22	50B22H	4.720	4.392	3/4	2	3	1	2.56	54	50B54	11.110	10.749	1	2-1/2	3-3/4	1-1/4	10.80
23	50B23H	4.920	4.590	3/4	2	3	1	2.66	55	50B55	11.310	10.948	1	2-1/2	3-3/4	1-1/4	11.00
24	50B24H	5.120	4.788	3/4	2	3	1-1/4	3.30	56	50B56	11.500	11.147	1	2-1/2	3-3/4	1-1/4	11.40
25	50B25H	5.320	4.987	3/4	2	3	1-1/4	3.40	57	50B57	11.700	11.346	1	2-1/2	3-3/4	1-1/4	11.70
26	50B26H	5.520	5.185	3/4	2	3	1-1/4	3.44	58	50B58	11.900	11.544	1	2-1/2	3-3/4	1-1/4	12.00
27	50B27H	5.720	5.384	3/4	2	3	1-1/4	3.74	59	50B59	12.100	11.743	1	2-1/2	3-3/4	1-1/4	12.32
28	50B28H	5.920	5.582	3/4	2	3	1-1/4	3.80	60	50B60	12.300	11.942	1	2-1/2	3-3/4	1-1/4	13.00
29	50B29H	6.120	5.781	3/4	2	3	1-1/4	4.06	65	50B65	13.300	12.936	1	2-1/2	3-3/4	1-3/4	15.50
30	50B30H	6.320	5.979	3/4	2-1/4	3-1/4	1-1/4	4.56	70	50B70	14.290	13.931	1	2-1/2	3-3/4	1-3/4	18.16
31	50B31H	6.520	6.178	3/4	2-1/4	3-1/4	1-1/4	4.74	72	50B72	14.690	14.329	1	2-1/2	3-3/4	1-3/4	19.48
32	50B32H	6.720	6.376	3/4	2-1/4	3-1/4	1-1/4	4.96	76	50B76	15.486	15.124	1	2-1/2	3-3/4	1-3/4	21.00
33	50B33H	6.920	6.575	3/4	2-1/4	3-1/4	1-1/4	5.14	80	50B80	16.280	15.920	1	2-3/4	4-1/4	1-3/4	24.74
34	50B34H	7.120	6.774	3/4	2-1/4	3-1/4	1-1/4	5.29	84	50B84	17.080	16.715	1	2-3/4	4-1/4	1-3/4	25.50
35	50B35H	7.320	6.972	3/4	2-1/4	3-1/4	1-1/4	5.44	90	50B90	18.270	17.909	1	2-3/4	4-1/4	1-3/4	29.00
36	50B36H	7.520	7.171	3/4	2-1/4	3-1/4	1-1/4	5.64	95	50B95	19.270	18.903	1	2-3/4	4-1/4	1-3/4	32.00
37	50B37	7.720	7.370	3/4	2-1/4	3-1/4	1-1/4	5.90	96	50B96	19.470	19.102	1	2-3/4	4-1/4	1-3/4	32.92
38	50B38	7.920	7.569	3/4	2-1/4	3-1/4	1-1/4	6.08	102	50B102	20.660	20.295	1	2-3/4	4-1/4	1-3/4	36.30
39	50B39	8.120	7.767	3/4	2-1/4	3-1/4	1-1/4	6.30	112	50B112	22.650	22.285	1	2-3/4	4-1/4	1-3/4	42.00

H - Denotes hardened teeth.

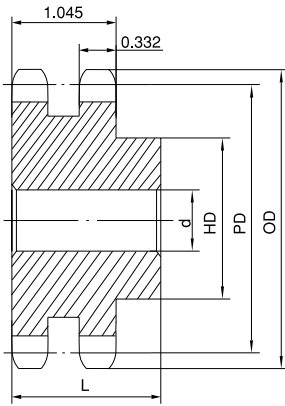
Maximum bores shown, accommodate standard keyway with setscrew positioned over keyway.

* Hub has recessed groove allowing for chain clearance. GD are as follows:

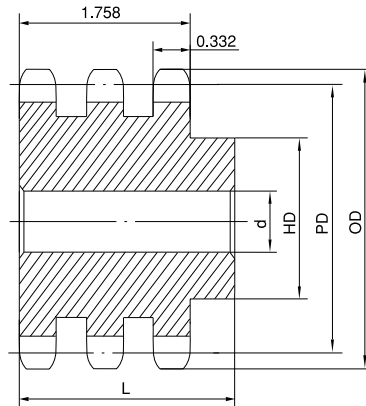
8 Teeth = 0.861in 9 Teeth = 1.069in 10 Teeth = 1.276in
 11 Teeth = 1.469in 12 Teeth = 1.685in

STOCK SPROCKETS No. 50

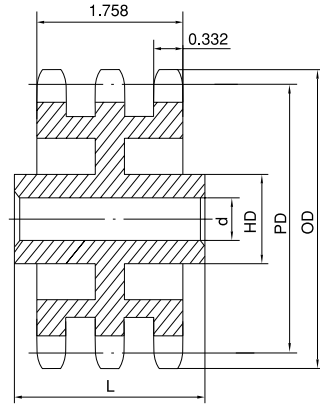
5/8" Pitch



Type B



Type B



Type C

Double Type B

Triple Type B & C

No. of Teeth	OD	PD	Double Type B							Triple Type B & C						
			Part No.	Type	d		HD	L	App. Wt. (Lbs.)	Part No.	Type	d		HD	L	App. Wt. (Lbs.)
					Min.	Max.						Min.	Max.			
11	2.500	2.219	D50B11H	B	5/8	15/16	1-15/32	1-3/4	0.96	T50B11H	B	5/8	15/16	1-15/32	2-1/2	1.42
12	2.710	2.415	D50B12H	B	5/8	1-1/8	1-11/16	1-3/4	1.25	T50B12H	B	5/8	1-1/8	1-11/16	2-1/2	1.84
13	2.910	2.612	D50B13H	B	5/8	1-5/16	1-7/8	1-3/4	1.56	T50B13H	B	5/8	1-5/16	1-7/8	2-1/2	2.28
14	3.110	2.809	D50B14H	B	5/8	1-3/8	2-1/16	1-3/4	1.86	T50B14H	B	5/8	1-3/8	2-1/16	2-1/2	2.72
15	3.320	3.006	D50B15H	B	3/4	1-1/2	2-5/16	1-3/4	2.22	T50B15H	B	3/4	1-1/2	2-5/16	2-1/2	3.24
16	3.520	3.204	D50B16H	B	3/4	1-3/4	2-1/2	1-3/4	2.62	T50B16H	B	3/4	1-3/4	2-1/2	2-1/2	3.76
17	3.720	3.401	D50B17H	B	3/4	1-7/8	2-11/16	1-3/4	3.04	T50B17H	B	3/4	1-7/8	2-11/16	2-1/2	4.38
18	3.920	3.599	D50B18H	B	3/4	1-15/16	2-15/16	1-3/4	3.58	T50B18H	B	3/4	1-15/16	2-15/16	2-1/2	5.10
19	4.120	3.797	D50B19H	B	1	2-1/8	3-1/8	1-3/4	3.90	T50B19H	B	1	2-1/8	3-1/8	2-1/2	5.60
20	4.320	3.995	D50B20H	B	1	2-1/4	3-1/4	1-3/4	4.26	T50B20H	B	1	2-1/4	3-1/4	2-5/8	6.42
21	4.520	4.194	D50B21H	B	1	2-3/8	3-1/2	1-3/4	4.90	T50B21H	B	1	2-3/8	3-1/2	2-5/8	7.42
22	4.720	4.392	D50B22H	B	1	2-3/8	3-9/16	1-7/8	5.58	T50B22H	B	1	2-3/8	3-9/16	2-5/8	7.92
23	4.920	4.590	D50B23H	B	1	2-1/2	3-5/8	1-7/8	6.10	T50B23H	B	1	2-1/2	3-5/8	2-5/8	8.80
24	5.120	4.788	D50B24H	B	1	2-1/2	3-5/8	1-7/8	6.50	T50B24H	B	1	2-1/2	3-5/8	2-5/8	9.42
25	5.320	4.987	D50B25H	B	1	2-1/2	3-5/8	1-7/8	6.94	T50B25H	B	1	2-1/2	3-5/8	2-5/8	10.16
26	5.520	5.185	D50B26	B	1	2-1/2	3-3/4	1-7/8	7.54	T50B26	B	1	2-1/2	3-3/4	2-5/8	11.02
30	6.320	5.979	D50B30	B	1	2-1/2	3-3/4	1-7/8	9.40	T50B30	B	1	2-1/2	3-3/4	2-5/8	14.24
32	6.720	6.376	D50B32	B	1	2-1/2	3-3/4	1-7/8	10.46							
35	7.320	6.972	D50B35	B	1	2-1/2	3-3/4	1-7/8	12.28	T50B35	B	1	2-1/2	3-3/4	2-5/8	18.96
36	7.520	7.171	D50B36	B	1-3/16	2-3/4	4	2-1/8	13.94	T50B36	B	1-3/16	2-3/4	4	2-3/4	20.60
40	8.320	7.966	D50B40	B	1-3/16	2-3/4	4	2-1/8	16.54							
42	8.720	8.363	D50B42	B	1-3/16	2-3/4	4	2-1/8	17.92	T50B42	B	1-3/16	2-3/4	4	2-3/4	27.46
45	9.310	8.960	D50B45	B	1-3/16	2-3/4	4	2-1/8	20.30							
48	9.910	9.556	D50B48	B	1-3/16	2-3/4	4-1/4	2-3/8	24.08	T50B48	B	1-3/16	2-3/4	4	3-1/8	36.64
52	10.710	10.351	D50B52	B	1-3/16	2-3/4	4-1/4	2-3/8	27.42	T50B52	B	1-3/16	2-3/4	4	3-1/8	42.54
54	11.110	10.749	D50B54	B	1-3/16	2-3/4	4-1/4	2-3/8	29.16							
60	12.300	11.942	D50B60	B	1-5/16	3	4-1/2	2-3/8	35.88	T50B60	B	1-5/16	3	4-1/2	3-1/8	56.84
68	13.890	13.533	D50B68	B	1-5/16	3	4-1/2	2-3/8	44.98	T50B68	B	1-5/16	3	4-1/2	3-1/8	73.21
72	14.690	14.329	D50B72	B	1-5/16	3	4-1/2	2-3/8	50.22	T50C72	C	1-5/16	3	4-3/4	3-1/2	54.40
76	15.490	15.124	D50B76	B	1-5/16	3	4-1/2	2-3/8	45.64	T50C76	C	1-5/16	3	4-3/4	3-1/2	57.20
84	17.080	16.715	D50B84	B	1-5/16	3	4-1/2	2-3/8	51.64	T50C84	C	1-5/16	3	4-3/4	3-1/2	65.32
95	19.270	18.903	D50B95	B	1-5/16	3	4-1/2	2-3/8	64.32	T50C95	C	1-5/16	3	4-3/4	3-3/4	74.42
96	19.470	19.102	D50B96	B	1-5/16	3	4-1/2	2-3/8	67.42							
102	20.660	20.295	D50B102	B	1-5/16	3	4-1/2	2-3/8	72.68	T50C102	C	1-5/16	3	4-3/4	3-3/4	79.94
112	22.650	22.285	D50B112	B	1-5/16	3-5/16	5-1/4	2-3/8	90.22							

H - Denotes hardened teeth.

Maximum bores shown, accommodate standard keyway with setscrew positioned over keyway.