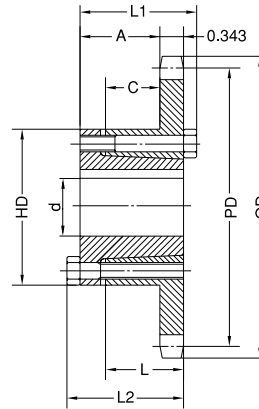


Q-BUSHED SPROCKETS No. 50

5/8" Pitch



Type B

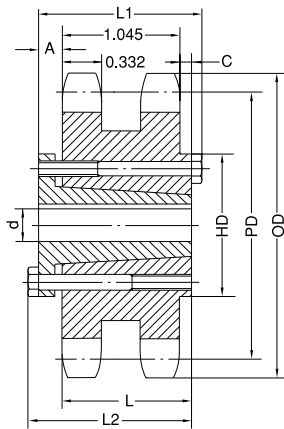
Single Q-Bushed

| No. of Teeth | Part No. | Bushing | OD | PD | Max. Bore d | L1 | L2 | HD | A | C | L | App. Wt. (Lbs.) | |
|--------------|----------|---------|--------|--------|-------------|--------|--------|---------|---------|-------|-------|-----------------|----------|
| | | | | | | | | | | | | With Hub | Sprocket |
| 12 | 50JA12H | JA | 2.710 | 2.415 | 1-1/4 | 1-1/8 | 1-1/8 | 2-1/16 | 21/32 | 9/32 | 5/8 | 1.24 | 0.34 |
| 13 | 50JA13H | JA | 2.910 | 2.612 | 1-1/4 | 1-1/8 | 1-1/8 | 2-1/16 | 21/32 | 9/32 | 5/8 | 1.30 | 0.40 |
| 14 | 50JA14H | JA | 3.110 | 2.803 | 1-1/4 | 1-1/8 | 1-1/8 | 2-1/16 | 21/32 | 9/32 | 5/8 | 1.45 | 0.52 |
| 15 | 50JA15H | JA | 3.320 | 3.006 | 1-1/4 | 1-1/8 | 1-1/8 | 2-1/16 | 21/32 | 9/32 | 5/8 | 1.50 | 0.60 |
| 16 | 50JA16H | JA | 3.520 | 3.204 | 1-1/4 | 1-1/8 | 1-1/8 | 2-1/16 | 21/32 | 9/32 | 5/8 | 1.58 | 0.68 |
| 17 | 50SH17H | SH | 3.720 | 3.401 | 1-5/8 | 1-7/16 | 1-7/16 | 2-11/16 | 29/32 | 15/32 | 13/16 | 1.84 | 0.84 |
| 18 | 50SH18H | SH | 3.920 | 3.599 | 1-5/8 | 1-7/16 | 1-7/16 | 2-11/16 | 29/32 | 15/32 | 13/16 | 2.04 | 1.04 |
| 19 | 50SH19H | SH | 4.120 | 3.797 | 1-5/8 | 1-7/16 | 1-7/16 | 2-11/16 | 29/32 | 15/32 | 13/16 | 2.24 | 1.24 |
| 20 | 50SDS20H | SDS | 4.320 | 3.995 | 2 | 1-1/2 | 1-1/2 | 3-3/16 | 31/32 | 13/32 | 3/4 | 2.20 | 1.20 |
| 21 | 50SDS21H | SDS | 4.520 | 4.194 | 2 | 1-1/2 | 1-1/2 | 3-3/16 | 31/32 | 13/32 | 3/4 | 2.32 | 1.32 |
| 22 | 50SDS22H | SDS | 4.720 | 4.392 | 2 | 1-1/2 | 1-1/2 | 3-3/16 | 31/32 | 13/32 | 3/4 | 2.48 | 1.42 |
| 23 | 50SDS23H | SDS | 4.920 | 4.590 | 2 | 1-1/2 | 1-1/2 | 3-3/16 | 31/32 | 13/32 | 3/4 | 2.58 | 1.58 |
| 24 | 50SDS24H | SDS | 5.120 | 4.788 | 2 | 1-1/2 | 1-1/2 | 3-3/16 | 31/32 | 13/32 | 3/4 | 2.70 | 1.70 |
| 25 | 50SDS25H | SDS | 5.320 | 4.987 | 2 | 1-1/2 | 1-1/2 | 3-3/16 | 31/32 | 13/32 | 3/4 | 2.86 | 1.86 |
| 26 | 50SDS26H | SDS | 5.520 | 5.185 | 2 | 1-1/2 | 1-1/2 | 3-3/16 | 31/32 | 13/32 | 3/4 | 3.00 | 2.00 |
| 27 | 50SDS27H | SDS | 5.720 | 5.384 | 2 | 1-1/2 | 1-1/2 | 3-3/16 | 31/32 | 13/32 | 3/4 | 3.12 | 2.12 |
| 28 | 50SDS28H | SDS | 5.920 | 5.582 | 2 | 1-1/2 | 1-1/2 | 3-3/16 | 31/32 | 13/32 | 3/4 | 3.32 | 2.32 |
| 30 | 50SDS30H | SDS | 6.320 | 5.979 | 2 | 1-1/2 | 1-1/2 | 3-3/16 | 31/32 | 13/32 | 3/4 | 3.64 | 2.64 |
| 32 | 50SDS32H | SDS | 6.720 | 6.376 | 2 | 1-1/2 | 1-1/2 | 3-3/16 | 31/32 | 13/32 | 3/4 | 3.98 | 2.98 |
| 35 | 50SDS35H | SDS | 7.320 | 6.972 | 2 | 1-1/2 | 1-1/2 | 3-3/16 | 31/32 | 13/32 | 3/4 | 4.62 | 3.62 |
| 36 | 50SDS36H | SDS | 7.520 | 7.171 | 2 | 1-1/2 | 1-1/2 | 3-3/16 | 31/32 | 13/32 | 3/4 | 4.64 | 3.64 |
| 40 | 50SDS40H | SDS | 8.320 | 7.966 | 2 | 1-1/2 | 1-1/2 | 3-3/16 | 31/32 | 13/32 | 3/4 | 5.74 | 4.74 |
| 42 | 50SDS42H | SDS | 8.720 | 8.363 | 2 | 1-1/2 | 1-1/2 | 3-3/16 | 31/32 | 13/32 | 3/4 | 6.40 | 5.40 |
| 45 | 50SDS45H | SDS | 9.310 | 8.960 | 2 | 1-1/2 | 1-1/2 | 3-3/16 | 31/32 | 13/32 | 3/4 | 6.90 | 5.90 |
| 48 | 50SDS48H | SDS | 9.910 | 9.556 | 2 | 1-1/2 | 1-1/2 | 3-3/16 | 31/32 | 13/32 | 3/4 | 7.66 | 6.66 |
| 54 | 50SK54 | SK | 11.110 | 10.749 | 2-5/8 | 2-1/8 | 2-1/8 | 3-7/8 | 1-17/32 | 29/32 | 1-1/4 | 11.68 | 9.68 |
| 60 | 50SK60 | SK | 12.300 | 11.942 | 2-5/8 | 2-1/8 | 2-1/8 | 3-7/8 | 1-17/32 | 29/32 | 1-1/4 | 13.88 | 11.88 |
| 70 | 50SK70 | SK | 14.290 | 13.931 | 2-5/8 | 2-1/8 | 2-1/8 | 3-7/8 | 1-17/32 | 29/32 | 1-1/4 | 17.52 | 15.52 |
| 72 | 50SK72 | SK | 14.690 | 14.329 | 2-5/8 | 2-1/8 | 2-1/8 | 3-7/8 | 1-17/32 | 29/32 | 1-1/4 | 18.44 | 16.44 |
| 80 | 50SF80 | SF | 16.280 | 15.920 | 2-15/16 | 2-1/4 | 2-1/4 | 4-5/8 | 1-21/32 | 29/32 | 1-1/4 | 22.90 | 19.90 |
| 84 | 50SF84 | SF | 17.080 | 16.715 | 2-15/16 | 2-1/4 | 2-1/4 | 4-5/8 | 1-21/32 | 29/32 | 1-1/4 | 25.98 | 22.98 |
| 96 | 50SF96 | SF | 19.470 | 19.102 | 2-15/16 | 2-1/4 | 2-1/4 | 4-5/8 | 1-21/32 | 29/32 | 1-1/4 | 32.88 | 29.88 |
| 112 | 50SF112 | SF | 22.650 | 22.285 | 2-15/16 | 2-1/4 | 2-1/4 | 4-5/8 | 1-21/32 | 29/32 | 1-1/4 | 43.10 | 40.10 |

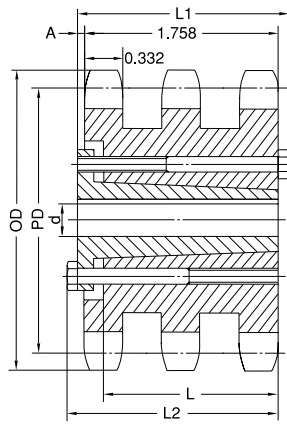
H - Denotes hardened teeth.

No. 50 Q-BUSHED SPROCKETS

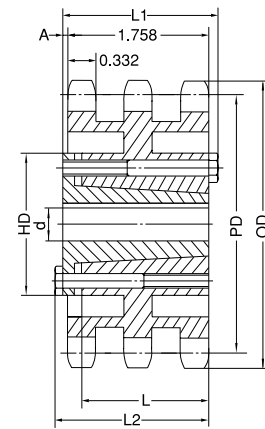
5/8" Pitch



Type B1



Type B2



Type B3

Double Q-Bushed

| No. of Teeth | Part No. | Type | Bushing | OD | PD | Max. Bore d | L1 | L2 | HD | A | C | L | App. Wt. (Lbs.) | |
|--------------|----------|----------------|---------|--------|--------|-------------|-------|-------|-------|-----|-------|-------|-----------------|----------|
| | | | | | | | | | | | | | With Hub | Sprocket |
| 36 | D50SK36 | B ₁ | SK | 7.520 | 7.171 | 2-5/8 | 2-1/8 | 2-1/8 | 3-7/8 | 5/8 | 13/64 | 1-1/4 | 11.08 | 9.08 |
| 42 | D50SK42 | B ₁ | SK | 8.720 | 8.363 | 2-5/8 | 2-1/8 | 2-1/8 | 3-7/8 | 5/8 | 13/64 | 1-1/4 | 15.16 | 13.16 |
| 48 | D50SK48 | B ₁ | SK | 9.910 | 9.556 | 2-5/8 | 2-1/8 | 2-1/8 | 3-7/8 | 5/8 | 13/64 | 1-1/4 | 19.90 | 17.90 |
| 52 | D50SF52 | B ₁ | SF | 10.710 | 10.351 | 2-15/16 | 2-1/4 | 2-1/4 | 4-5/8 | 3/4 | 13/64 | 1-1/4 | 24.26 | 21.26 |
| 54 | D50SF54 | B ₁ | SF | 11.110 | 10.749 | 2-15/16 | 2-1/4 | 2-1/4 | 4-5/8 | 3/4 | 13/64 | 1-1/4 | 26.18 | 23.18 |
| 60 | D50SF60 | B ₁ | SF | 12.300 | 11.942 | 2-15/16 | 2-1/4 | 2-1/4 | 4-5/8 | 3/4 | 13/64 | 1-1/4 | 32.12 | 29.12 |
| 68 | D50SF68 | B ₁ | SF | 13.890 | 13.533 | 2-15/16 | 2-1/4 | 2-1/4 | 4-5/8 | 3/4 | 13/64 | 1-1/4 | 41.16 | 38.16 |
| 72 | D50SF72 | B ₁ | SF | 14.690 | 14.329 | 2-15/16 | 2-1/4 | 2-1/4 | 4-5/8 | 3/4 | 13/64 | 1-1/4 | 46.28 | 43.26 |
| 76 | D50SF76 | B ₁ | SF | 15.490 | 15.124 | 2-15/16 | 2-1/4 | 2-1/4 | 4-5/8 | 3/4 | 13/64 | 1-1/4 | 47.00 | 44.00 |
| 84 | D50SF84 | B ₁ | SF | 17.080 | 16.715 | 2-15/16 | 2-1/4 | 2-1/4 | 4-5/8 | 3/4 | 13/64 | 1-1/4 | 48.89 | 45.88 |
| 95 | D50SF95 | B ₁ | SF | 19.270 | 18.903 | 2-15/16 | 2-1/4 | 2-1/4 | 4-5/8 | 3/4 | 13/64 | 1-1/4 | 61.80 | 58.88 |
| 102 | D40SF102 | B ₁ | SF | 20.660 | 20.295 | 2-15/16 | 2-1/4 | 2-1/4 | 4-5/8 | 3/4 | 13/64 | 1-1/4 | 69.02 | 66.02 |
| 112 | D50SF112 | B ₁ | SF | 22.650 | 22.285 | 2-15/16 | 2-1/4 | 2-1/4 | 4-5/8 | 3/4 | 13/64 | 1-1/4 | 88.26 | 85.26 |

Triple Q-Bushed

| No. of Teeth | Part No. | Type | Bushing | OD | PD | Max. Bore d | L1 | L2 | HD | A | L | App. Wt. (Lbs.) | |
|--------------|----------|----------------|---------|--------|--------|-------------|-------|-------|-------|-----|-------|-----------------|----------|
| | | | | | | | | | | | | With Hub | Sprocket |
| 36 | T50SK36 | B ₂ | SK | 7.520 | 7.171 | 2-5/8 | 2-1/8 | 2-1/8 | | 1/8 | 1-1/4 | 14.80 | 12.80 |
| 42 | T50SK42 | B ₂ | SK | 8.720 | 8.363 | 2-5/8 | 2-1/8 | 2-1/8 | | 1/8 | 1-1/4 | 21.50 | 19.50 |
| 48 | T50SK48 | B ₂ | SK | 9.910 | 9.556 | 2-5/8 | 2-1/8 | 2-1/8 | | 1/8 | 1-1/4 | 29.60 | 27.60 |
| 52 | T50SF52 | B ₂ | SF | 10.710 | 10.351 | 2-15/16 | 2-1/4 | 2-1/4 | | 1/4 | 1-1/4 | 31.60 | 28.60 |
| 60 | T50SF60 | B ₂ | SF | 12.300 | 11.942 | 2-15/16 | 2-1/4 | 2-1/4 | | 1/4 | 1-1/4 | 42.10 | 39.10 |
| 68 | T50SF68 | B ₂ | SF | 13.890 | 13.533 | 2-15/16 | 2-1/4 | 2-1/4 | | 1/4 | 1-1/4 | 53.80 | 50.80 |
| 72 | T50SF72 | B ₃ | SF | 14.690 | 14.329 | 2-15/16 | 2-1/4 | 2-1/4 | 4-5/8 | 1/4 | 1-1/4 | 46.60 | 43.60 |
| 76 | T50SF76 | B ₃ | SF | 15.490 | 15.124 | 2-15/16 | 2-1/4 | 2-1/4 | 4-5/8 | 1/4 | 1-1/4 | 49.90 | 46.90 |
| 84 | T50SF84 | B ₃ | SF | 17.080 | 16.715 | 2-15/16 | 2-1/4 | 2-1/4 | 4-5/8 | 1/4 | 1-1/4 | 53.90 | 50.90 |
| 95 | T50SF95 | B ₃ | SF | 19.270 | 18.903 | 2-15/16 | 2-1/4 | 2-1/4 | 4-5/8 | 1/4 | 1-1/4 | 62.30 | 59.30 |
| 102 | T50SF102 | B ₃ | SF | 20.660 | 20.295 | 2-15/16 | 2-1/4 | 2-1/4 | 4-5/8 | 1/4 | 1-1/4 | 69.30 | 66.30 |