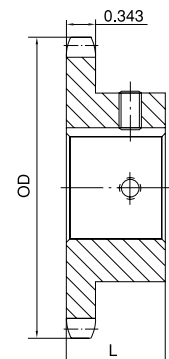


No. 50 FINISHED BORE

5/8" Pitch

Single Type BS

No. of Teeth	Part No.	OD	L	App. Wt. (Lbs.)	Finished Bores (Includes Keyway and 2 Setscrews)
9	50BS9H	2.090	1	0.45	5/8 3/4
10	50BS10H	2.300	1	0.50	5/8 3/4 7/8 +1
11	50BS11H	2.500	1	0.60	5/8 3/4 7/8 1
12	50BS12H	2.710	1	0.70	5/8 3/4 7/8 1 1-1/8 1-3/16 1-1/4
13	50BS13H	2.910	1	0.80	5/8 3/4 7/8 1 1-1/8 1-3/16 1-1/4
14	50BS14H	3.110	1	1.00	5/8 3/4 7/8 1 1-1/8 1-3/16 1-1/4
15	50BS15H	3.320	1	1.20	5/8 3/4 7/8 1 1-1/8 1-3/16 1-1/4 1-3/8 1-7/16 1-1/2
16	50BS16H	3.520	1	1.45	5/8 3/4 7/8 1 1-1/8 1-3/16 1-1/4 1-3/8 1-7/16 1-1/2 1-5/8
17	50BS17H	3.720	1	1.60	5/8 3/4 7/8 1 1-1/8 1-3/16 1-1/4 1-3/8 1-7/16 1-1/2 1-5/8
18	50BS18H	3.920	1	1.90	5/8 3/4 7/8 1 1-1/8 1-3/16 1-1/4 1-3/8 1-7/16 1-1/2 1-5/8
19	50BS19H	4.120	1	2.00	5/8 3/4 7/8 1 1-1/8 1-3/16 1-1/4 1-3/8 1-7/16 1-1/2 1-5/8
20	50BS20H	4.320	1	2.10	3/4 7/8 1 1-1/8 1-3/16 1-1/4 1-3/8 1-7/16 1-1/2 1-5/8
21	50BS21H	4.520	1	2.25	3/4 7/8 1 1-1/8 1-3/16 1-1/4 1-3/8 1-7/16 1-1/2
22	50BS22H	4.720	1	2.40	3/4 7/8 1 1-1/8 1-3/16 1-1/4 1-3/8 1-7/16 1-1/2
23	50BS23H	4.920	1	2.50	3/4 7/8 1 1-1/8 1-3/16 1-1/4 1-3/8 1-7/16 1-1/2
24	50BS24H	5.120	1-1/4	3.00	3/4 7/8 1 1-1/8 1-3/16 1-1/4 1-3/8 1-7/16 1-1/2
25	50BS25H	5.320	1-1/4	3.10	3/4 7/8 1 1-1/8 1-3/16 1-1/4 1-3/8 1-7/16 1-1/2
26	50BS26H	5.520	1-1/4	3.30	3/4 7/8 1 1-1/8 1-3/16 1-1/4 1-3/8 1-7/16 1-1/2
27	50BS27H	5.720	1-1/4	3.46	3/4 7/8 1 1-1/8 1-3/16 1-1/4 1-3/8 1-7/16 1-1/2
28	50BS28H	5.920	1-1/4	3.60	3/4 7/8 1 1-1/8 1-3/16 1-1/4 1-3/8 1-7/16 1-1/2
29	50BS29H	6.120	1-1/4	3.78	3/4 7/8 1 1-1/8 1-3/16 1-1/4 1-3/8 1-7/16 1-1/2
30	50BS30H	6.320	1-1/4	3.90	3/4 7/8 1 1-1/8 1-3/16 1-1/4 1-3/8 1-7/16 1-1/2
31	50BS31H	6.520	1-1/4	4.46	3/4 7/8 1 1-1/8 1-3/16 1-1/4 1-3/8 1-7/16 1-1/2 1-3/4 1-15/16
32	50BS32H	6.720	1-1/4	4.70	3/4 7/8 1 1-1/8 1-3/16 1-1/4 1-3/8 1-7/16 1-1/2 1-3/4 1-15/16
33	50BS33H	6.920	1-1/4	4.92	3/4 7/8 1 1-1/8 1-3/16 1-1/4 1-3/8 1-7/16 1-1/2 1-3/4 1-15/16
34	50BS34H	7.120	1-1/4	5.06	3/4 7/8 1 1-1/8 1-3/16 1-1/4 1-3/8 1-7/16 1-1/2 1-3/4 1-15/16
35	50BS35H	7.320	1-1/4	5.30	3/4 7/8 1 1-1/8 1-3/16 1-1/4 1-3/8 1-7/16 1-1/2 1-3/4 1-15/16
36	50BS36H	7.520	1-1/4	5.50	3/4 7/8 1 1-1/8 1-3/16 1-1/4 1-3/8 1-7/16 1-1/2 1-3/4 1-15/16
37	50BS37	7.720	1-1/4	5.62	3/4 7/8 1 1-1/8 1-3/16 1-1/4 1-3/8 1-7/16 1-1/2 1-3/4 1-15/16
38	50BS38	7.920	1-1/4	5.80	3/4 7/8 1 1-1/8 1-3/16 1-1/4 1-3/8 1-7/16 1-1/2 1-3/4 1-15/16
39	50BS39	8.120	1-1/4	6.02	3/4 7/8 1 1-1/8 1-3/16 1-1/4 1-3/8 1-7/16 1-1/2 1-3/4 1-15/16
40	50BS40	8.320	1-1/4	6.20	3/4 7/8 1 1-1/8 1-3/16 1-1/4 1-3/8 1-7/16 1-1/2 1-3/4 1-15/16
41	50BS41	8.520	1-1/4	6.45	3/4 7/8 1 1-1/8 1-3/16 1-1/4 1-3/8 1-7/16 1-1/2 1-3/4 1-15/16
42	50BS42	8.720	1-1/4	6.68	3/4 7/8 1 1-1/8 1-3/16 1-1/4 1-3/8 1-7/16 1-1/2 1-3/4 1-15/16
43	50BS43	8.910	1-1/4	6.79	3/4 7/8 1 1-1/8 1-3/16 1-1/4 1-3/8 1-7/16 1-1/2 1-3/4 1-15/16
44	50BS44	9.110	1-1/4	7.30	3/4 7/8 1 1-1/8 1-3/16 1-1/4 1-3/8 1-7/16 1-1/2 1-3/4 1-15/16
45	50BS45	9.310	1-1/4	8.00	3/4 7/8 1 1-1/8 1-3/16 1-1/4 1-3/8 1-7/16 1-1/2 1-3/4 1-15/16
46	50BS46	9.510	1-1/4	8.51	1 1-1/8 1-3/16 1-1/4 1-3/8 1-7/16 1-1/2 1-3/4 1-15/16
47	50BS47	9.710	1-1/4	8.76	1 1-1/8 1-3/16 1-1/4 1-3/8 1-7/16 1-1/2 1-3/4 1-15/16
48	50BS48	9.910	1-1/4	9.03	1 1-1/8 1-3/16 1-1/4 1-3/8 1-7/16 1-1/2 1-3/4 1-15/16
49	50BS49	10.110	1-1/4	9.33	1 1-1/8 1-3/16 1-1/4 1-3/8 1-7/16 1-1/2 1-3/4 1-15/16
50	50BS50	10.310	1-1/4	9.63	1 1-1/8 1-3/16 1-1/4 1-3/8 1-7/16 1-1/2 1-3/4 1-15/16
51	50BS51	10.510	1-1/4	9.81	1 1-1/8 1-3/16 1-1/4 1-3/8 1-7/16 1-1/2 1-3/4 1-15/16
52	50BS52	10.710	1-1/4	9.99	1 1-1/8 1-3/16 1-1/4 1-3/8 1-7/16 1-1/2 1-3/4 1-15/16
53	50BS53	10.910	1-1/4	10.37	1 1-1/8 1-3/16 1-1/4 1-3/8 1-7/16 1-1/2 1-3/4 1-15/16
54	50BS54	11.110	1-1/4	10.75	1 1-1/8 1-3/16 1-1/4 1-3/8 1-7/16 1-1/2 1-3/4 1-15/16
55	50BS55	11.310	1-1/4	11.08	1 1-1/8 1-3/16 1-1/4 1-3/8 1-7/16 1-1/2 1-3/4 1-15/16
56	50BS56	11.500	1-1/4	11.41	1 1-1/8 1-3/16 1-1/4 1-3/8 1-7/16 1-1/2 1-3/4 1-15/16
57	50BS57	11.700	1-1/4	11.75	1 1-1/8 1-3/16 1-1/4 1-3/8 1-7/16 1-1/2 1-3/4 1-15/16
58	50BS58	11.900	1-1/4	12.08	1 1-1/8 1-3/16 1-1/4 1-3/8 1-7/16 1-1/2 1-3/4 1-15/16
59	50BS59	12.100	1-1/4	12.41	1 1-1/8 1-3/16 1-1/4 1-3/8 1-7/16 1-1/2 1-3/4 1-15/16
60	50BS60	12.300	1-1/4	13.50	1 1-1/8 1-3/16 1-1/4 1-3/8 1-7/16 1-1/2 1-3/4 1-15/16
70	50BS70	14.290	1-3/4	17.81	1 1-1/8 1-3/16 1-1/4 1-3/8 1-7/16 1-1/2 1-3/4 1-15/16
72	50BS72	14.690	1-3/4	19.13	1 1-1/8 1-3/16 1-1/4 1-3/8 1-7/16 1-1/2 1-3/4 1-15/16
80	50BS80	16.280	1-3/4	24.39	1 1-1/8 1-3/16 1-1/4 1-3/8 1-7/16 1-1/2 1-3/4 1-15/16
84	50BS84	17.080	1-3/4	25.15	1 1-1/8 1-3/16 1-1/4 1-3/8 1-7/16 1-1/2 1-3/4 1-15/16
96	50BS96	19.470	1-3/4	32.57	1 1-1/8 1-3/16 1-1/4 1-3/8 1-7/16 1-1/2 1-3/4 1-15/16
112	50BS112	22.650	1-3/4	41.46	1 1-1/8 1-3/16 1-1/4 1-3/8 1-7/16 1-1/2 1-3/4 1-15/16



Type BS

H - Denotes hardened teeth.
 + - Indicates single setscrew at 90° of keyway.
 Larger bore sizes require hubs of greater diameter.
 Keyway centered on line of tooth.