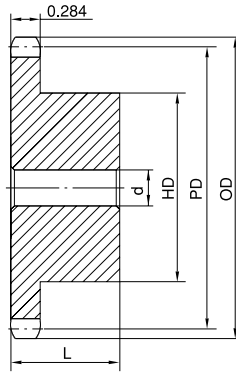
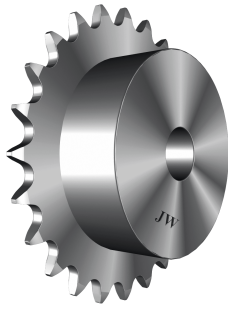
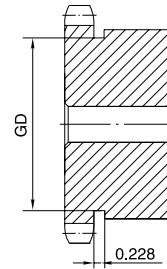


# No. 40 STOCK SPROCKETS

## 1/2" Pitch



Type B



Type B

### Single Type B

No. of Teeth	Part No.	OD	PD	d		HD	L	App. Wt. (Lbs.)	No. of Teeth	Part No.	OD	PD	d		HD	L	App. Wt. (Lbs.)
				Min.	Max.								Min.	Max.			
8	40B8H	1.500	1.307	1/2	1/2	31/32*	7/8	0.18	38	40B38	6.330	6.054	5/8	2-1/4	3-1/4	1	3.70
9	40B9H	1.670	1.462	1/2	9/16	1-1/16*	7/8	0.20	39	40B39	6.490	6.214	5/8	2-1/4	3-1/4	1	3.76
10	40B10H	1.840	1.618	1/2	3/4	1-1/4*	7/8	0.27	40	40B40	6.650	6.373	3/4	2-3/8	3-1/2	1-1/8	4.69
11	40B11H	2.000	1.775	1/2	7/8	1-3/8*	7/8	0.35	41	40B41	6.810	6.532	3/4	2-3/8	3-1/2	1-1/8	4.76
12	40B12H	2.170	1.932	1/2	1	1-9/16*	7/8	0.45	42	40B42	6.970	6.691	3/4	2-3/8	3-1/2	1-1/8	4.82
13	40B13H	2.330	2.089	1/2	1-1/16	1-9/16	7/8	0.50	43	40B43	7.130	6.850	3/4	2-3/8	3-1/2	1-1/8	5.12
14	40B14H	2.490	2.247	1/2	1-1/8	1-11/16	7/8	0.59	44	40B44	7.290	7.009	3/4	2-3/8	3-1/2	1-1/8	5.15
15	40B15H	2.650	2.405	1/2	1-1/4	1-13/16	7/8	0.70	45	40B45	7.450	7.168	3/4	2-3/8	3-1/2	1-1/8	5.30
16	40B16H	2.810	2.563	5/8	1-3/8	2	7/8	0.79	46	40B46	7.610	7.327	3/4	2-3/8	3-1/2	1-1/8	5.44
17	40B17H	2.980	2.721	5/8	1-7/16	2-1/8	1	1.04	47	40B47	7.770	7.486	3/4	2-3/8	3-1/2	1-1/8	5.59
18	40B18H	3.140	2.879	5/8	1-1/2	2-5/16	1	1.22	48	40B48	7.930	7.645	3/4	2-3/8	3-1/2	1-1/8	5.74
19	40B19H	3.300	3.038	5/8	1-3/4	2-1/2	1	1.43	49	40B49	8.090	7.804	3/4	2-3/8	3-1/2	1-1/8	5.90
20	40B20H	3.460	3.196	5/8	1-7/8	2-5/8	1	1.56	50	40B50	8.250	7.963	3/4	2-3/8	3-1/2	1-1/8	5.96
21	40B21H	3.620	3.355	5/8	1-7/8	2-3/4	1	1.73	51	40B51	8.410	8.122	3/4	2-3/8	3-1/2	1-1/8	6.08
22	40B22H	3.780	3.513	5/8	1-7/8	2-7/8	1	1.96	52	40B52	8.570	8.281	3/4	2-3/8	3-1/2	1-1/8	6.28
23	40B23H	3.940	3.672	5/8	2	3	1	2.13	53	40B53	8.730	8.440	3/4	2-3/8	3-1/2	1-1/8	6.33
24	40B24H	4.100	3.831	5/8	2-1/4	3-1/4	1	2.41	54	40B54	8.890	8.599	3/4	2-3/8	3-1/2	1-1/8	6.42
25	40B25H	4.260	3.989	5/8	2-1/4	3-1/4	1	2.54	55	40B55	9.040	8.758	3/4	2-3/8	3-1/2	1-1/8	6.56
26	40B26H	4.420	4.148	5/8	2-1/4	3-1/4	1	2.58	56	40B56	9.200	8.917	3/4	2-3/8	3-1/2	1-1/8	6.89
27	40B27H	4.580	4.307	5/8	2-1/4	3-1/4	1	2.66	57	40B57	9.360	9.076	3/4	2-3/8	3-1/2	1-1/8	7.02
28	40B28H	4.740	4.466	5/8	2-1/4	3-1/4	1	2.73	58	40B58	9.520	9.236	3/4	2-3/8	3-1/2	1-1/8	7.36
29	40B29H	4.900	4.624	5/8	2-1/4	3-1/4	1	2.80	59	40B59	9.680	9.395	3/4	2-3/8	3-1/2	1-1/8	7.45
30	40B30H	5.060	4.783	5/8	2-1/4	3-1/4	1	2.98	60	40B60	9.840	9.554	3/4	2-3/8	3-1/2	1-1/8	7.86
31	40B31H	5.220	4.942	5/8	2-1/4	3-1/4	1	3.10	65	40B65	10.630	10.349	3/4	2-3/4	4	1-1/4	9.40
32	40B32H	5.380	5.101	5/8	2-1/4	3-1/4	1	3.16	70	40B70	11.430	11.145	3/4	2-3/4	4	1-1/4	11.00
33	40B33H	5.540	5.260	5/8	2-1/4	3-1/4	1	3.22	72	40B72	11.750	11.463	3/4	2-3/4	4	1-1/4	11.50
34	40B34H	5.700	5.419	5/8	2-1/4	3-1/4	1	3.30	80	40B80	13.030	12.736	3/4	2-3/4	4	1-1/4	13.40
35	40B35H	5.860	5.578	5/8	2-1/4	3-1/4	1	3.46	84	40B84	13.660	13.372	3/4	2-3/4	4	1-1/4	14.04
36	40B36H	6.020	5.737	5/8	2-1/4	3-1/4	1	3.58	96	40B96	15.570	15.281	1	2-3/4	4	1-1/4	17.56
37	40B37	6.180	5.896	5/8	2-1/4	3-1/4	1	3.62	112	40B112	18.120	17.828	1	2-3/4	4	1-1/4	22.56

H - Denotes hardened teeth.

Maximum bores shown, accommodate standard keyway with setscrew positioned over keyway.

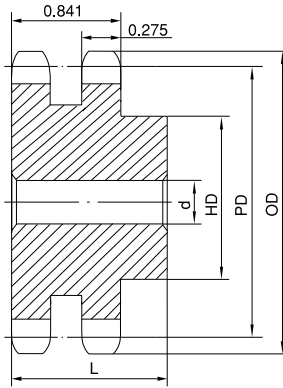
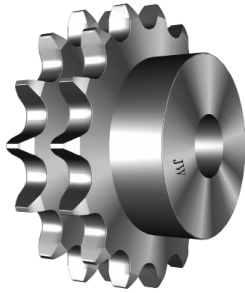
\* Hub has recessed groove allowing for chain clearance. GD are as follows:

8 Teeth = 0.683in    9 Teeth = 0.850in    10 Teeth = 1.015in

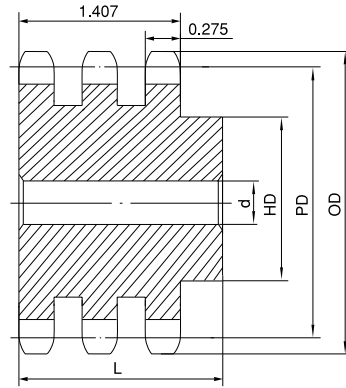
11 Teeth = 1.179in    12 Teeth = 1.342in

# STOCK SPROCKETS **No. 40**

## 1/2" Pitch



Type B



Type B

### Double Type B

### Triple Type B

No. of Teeth	OD	PD	Double Type B							Triple Type B						
			Part No.	Type	d		HD	L	App. Wt. (Lbs.)	Part No.	Type	d		HD	L	App. Wt. (Lbs.)
					Min.	Max.						Min.	Max.			
11	2.000	1.775	D40B11H	B	1/2	3/4	1-7/16*	1-1/2	0.62	T40B11H	B	1/2	3/4	1-7/16	2-1/8	0.80
12	2.170	1.932	D40B12H	B	1/2	15/16	1-9/16*	1-1/2	0.76	T40B12H	B	1/2	15/16	1-9/16	2-1/8	1.10
13	2.330	2.089	D40B13H	B	1/2	1	1-1/2	1-1/2	0.86	T40B13H	B	1/2	1	1-1/2	2-1/8	1.24
14	2.490	2.247	D40B14H	B	1/2	1-1/8	1-11/16	1-1/2	1.08	T40B14H	B	1/2	1-1/8	1-11/16	2-1/8	1.50
15	2.650	2.405	D40B15H	B	1/2	1-1/4	1-13/16	1-1/2	1.24	T40B15H	B	1/2	1-1/4	1-13/16	2-1/8	1.76
16	2.810	2.563	D40B16H	B	5/8	1-3/8	2	1-1/2	1.42	T40B16H	B	5/8	1-3/8	2	2-1/8	2.04
17	2.980	2.721	D40B17H	B	5/8	1-7/16	2-1/8	1-1/2	1.64	T40B17H	B	5/8	1-7/16	2-1/8	2-1/8	2.34
18	3.140	2.879	D40B18H	B	5/8	1-1/2	2-5/16	1-1/2	1.92	T40B18H	B	5/8	1-1/2	2-5/16	2-1/8	2.72
19	3.300	3.038	D40B19H	B	5/8	1-3/4	2-1/2	1-1/2	2.22	T40B19H	B	5/8	1-3/4	2-1/2	2-1/8	3.10
20	3.460	3.196	D40B20H	B	5/8	1-7/8	2-5/8	1-5/8	2.64	T40B20H	B	5/8	1-7/8	2-5/8	2-1/4	3.72
21	3.620	3.355	D40B21H	B	5/8	1-7/8	2-3/4	1-5/8	2.94	T40B21H	B	5/8	1-7/8	2-3/4	2-1/4	4.06
22	3.780	3.513	D40B22H	B	5/8	1-7/8	2-7/8	1-5/8	3.18	T40B22H	B	5/8	1-7/8	2-7/8	2-1/4	4.52
23	3.940	3.672	D40B23H	B	5/8	2	3	1-5/8	3.52	T40B23H	B	5/8	2	3	2-1/4	4.96
24	4.100	3.831	D40B24H	B	5/8	2-1/4	3-1/4	1-5/8	4.04	T40B24H	B	5/8	2-1/4	3-1/4	2-1/4	5.64
25	4.260	3.989	D40B25H	B	5/8	2-1/4	3-1/4	1-5/8	4.26	T40B25H	B	5/8	2-1/4	3-1/4	2-1/4	6.02
26	4.420	4.148	D40B26	B	5/8	2-1/4	3-1/4	1-5/8	4.48	T40B26	B	5/8	2-1/4	3-1/4	2-1/4	6.36
30	5.060	4.783	D40B30	B	7/8	2-1/4	3-1/4	1-5/8	5.34	T40B30	B	7/8	2-1/4	3-1/4	2-1/4	7.84
35	5.860	5.578	D40B35	B	7/8	2-1/4	3-1/4	1-5/8	6.80	T40B35	B	7/8	2-1/4	3-1/4	2-1/4	10.30
36	6.020	5.737	D40B36	B	15/16	2-1/2	3-3/4	1-5/8	7.20	T40B36	B	15/16	2-1/2	3-3/4	2-3/8	11.72
40	6.650	6.373	D40B40	B	15/16	2-1/2	3-3/4	1-3/4	9.40							
42	6.970	6.691	D40B42	B	15/16	2-1/2	3-3/4	1-3/4	10.20	T40B42	B	15/16	2-1/2	3-3/4	2-3/8	15.36
45	7.450	7.168	D40B45	B	15/16	2-1/2	3-3/4	1-3/4	11.36							
48	7.930	7.645	D40B48	B	15/16	2-1/2	3-3/4	1-3/4	12.66	T40B48	B	15/16	2-1/2	3-3/4	2-3/8	19.36
52	8.570	8.281	D40B52	B	15/16	2-1/2	3-3/4	1-3/4	14.46	T40B52	B	15/16	2-1/2	3-3/4	2-3/8	22.44
54	8.890	8.599	D40B54	B	15/16	2-1/2	3-3/4	1-3/4	15.48							
60	9.840	9.554	D40B60	B	15/16	2-1/2	3-3/4	1-3/4	18.60	T40B60	B	15/16	2-1/2	3-3/4	2-3/8	30.02
68	11.120	10.826	D40B68	B	1-3/16	2-3/4	4-1/4	2-1/8	24.96	T40B68	B	1-3/16	2-3/4	4	2-5/8	38.44
72	11.750	11.463	D40B72	B	1-3/16	2-3/4	4-1/4	2-1/8	27.88	T40B72	B	1-3/16	2-3/4	4	2-5/8	42.46
76	12.390	12.099	D40B76	B	1-3/16	2-3/4	4-1/4	2-1/8	30.18	T40B76	B	1-3/16	2-3/4	4	2-5/8	46.90
84	13.660	13.372	D40B84	B	1-3/16	2-3/4	4-1/4	2-1/8	36.24	T40B84	B	1-3/16	2-3/4	4-1/4	2-3/4	57.30
95	15.410	15.122	D40B95	B	1-3/16	2-3/4	4-1/4	2-1/8	38.84	T40B95	B	1-3/16	2-3/4	4-1/4	2-3/4	62.18
96	15.570	15.281	D40B96	B	1-3/16	2-3/4	4-1/4	2-1/8	39.50							
102	16.530	16.236	D40B102	B	1-3/16	2-3/4	4-1/4	2-1/8	42.72	T40B102	B	1-3/16	2-3/4	4-1/4	2-3/4	68.40
112	18.120	17.828	D40B112	B	1-3/16	2-3/4	4-1/4	2-1/8	55.54							

H - Denotes hardened teeth.

Maximum bores shown, accommodate standard keyway with setscrew positioned over keyway.

\* Hub has recessed groove allowing for chain clearance. Groove depth is the same as Single Type B; see page 14.