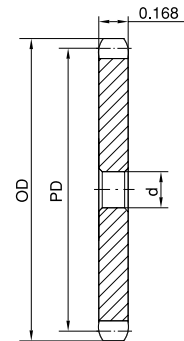


# No. 35 STOCK SPROCKETS

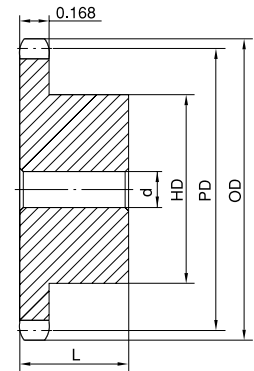
## 3/8" Pitch

### Single Type A & B

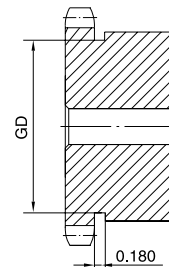
No. of Teeth	OD	PD	Type A			Type B					
			Part No.	d	App. Wt. (Lbs.)	Part No.	d		HD	L	App. Wt. (Lbs.)
							Min.	Max.			
8	1.130	0.980	35A8H	3/8	0.03	35B8H	3/8	3/8	3/4*	3/4	0.07
9	1.260	1.096	35A9H	3/8	0.04	35B9H	3/8	3/8	27/32*	3/4	0.09
10	1.380	1.214	35A10H	3/8	0.06	35B10H	3/8	9/16	31/32*	3/4	0.14
11	1.500	1.331	35A11H	3/8	0.07	35B11H	3/8	9/16	1-1/16*	3/4	0.17
12	1.630	1.449	35A12H	3/8	0.09	35B12H	1/2	9/16	1-7/32*	3/4	0.20
13	1.750	1.567	35A13H	3/8	0.09	35B13H	1/2	11/16	1-1/4*	3/4	0.23
14	1.870	1.685	35A14H	3/8	0.10	35B14H	1/2	7/8	1-1/4	3/4	0.25
15	1.990	1.804	35A15H	1/2	0.10	35B15H	1/2	7/8	1-11/32	3/4	0.29
16	2.110	1.922	35A16H	1/2	0.12	35B16H	1/2	15/16	1-15/32	3/4	0.35
17	2.230	2.041	35A17H	1/2	0.12	35B17H	1/2	1-1/16	1-19/32	3/4	0.42
18	2.350	2.159	35A18H	1/2	0.14	35B18H	1/2	1-3/16	1-23/32	3/4	0.48
19	2.470	2.278	35A19H	1/2	0.16	35B19H	1/2	1-1/4	1-27/32	3/4	0.54
20	2.590	2.397	35A20H	1/2	0.20	35B20H	1/2	1-5/16	1-15/16	3/4	0.59
21	2.710	2.516	35A21H	1/2	0.20	35B21H	1/2	1-3/8	2	7/8	0.80
22	2.830	2.635	35A22H	1/2	0.22	35B22H	1/2	1-3/8	2	7/8	0.80
23	2.950	2.754	35A23H	1/2	0.24	35B23H	1/2	1-3/8	2	7/8	0.82
24	3.070	2.873	35A24H	1/2	0.26	35B24H	1/2	1-3/8	2	7/8	0.88
25	3.190	2.992	35A25H	1/2	0.28	35B25H	1/2	1-3/8	2	7/8	0.88
26	3.310	3.111	35A26H	1/2	0.28	35B26H	1/2	1-3/8	2	7/8	0.90
27	3.430	3.230	35A27H	1/2	0.34	35B27H	1/2	1-3/8	2	7/8	0.94
28	3.550	3.349	35A28H	1/2	0.39	35B28H	1/2	1-3/8	2	7/8	0.94
29	3.670	3.469	35A29H	1/2	0.42	35B29H	1/2	1-3/8	2	7/8	0.98
30	3.790	3.588	35A30H	1/2	0.45	35B30H	1/2	1-3/8	2	7/8	1.02
31	3.910	3.707	35A31H	1/2	0.48	35B31H	1/2	1-3/8	2	7/8	1.06
32	4.030	3.826	35A32H	5/8	0.51	35B32H	1/2	1-3/8	2	7/8	1.10
33	4.150	3.945	35A33H	5/8	0.54	35B33H	5/8	1-1/2	2-1/4	7/8	1.29
34	4.270	4.064	35A34H	5/8	0.57	35B34H	5/8	1-1/2	2-1/4	7/8	1.32
35	4.390	4.183	35A35H	5/8	0.60	35B35H	5/8	1-1/2	2-1/4	7/8	1.36
36	4.510	4.303	35A36H	5/8	0.62	35B36H	5/8	1-1/2	2-1/4	7/8	1.40
37	4.630	4.422	35A37	5/8	0.64	35B37	5/8	1-1/2	2-1/4	1	1.48
38	4.750	4.541	35A38	5/8	0.66	35B38	5/8	1-1/2	2-1/4	1	1.52
39	4.870	4.660	35A39	5/8	0.68	35B39	5/8	1-1/2	2-1/4	1	1.57
40	4.990	4.780	35A40	19/32	0.70	35B40	5/8	1-1/2	2-1/4	1	1.62
42	5.230	5.018	35A42	19/32	0.78	35B42	5/8	1-1/2	2-1/4	1	1.68
45	5.590	5.376	35A45	19/32	0.88	35B45	5/8	1-1/2	2-1/4	1	1.78
48	5.950	5.734	35A48	19/32	1.21	35B48	5/8	1-1/2	2-1/4	1	1.88
50	6.190	5.972	35A50	19/32	1.23	35B50	5/8	1-1/2	2-1/4	1	1.98
54	6.660	6.449	35A54	19/32	1.32	35B54	5/8	1-1/2	2-1/4	1	2.20
60	7.380	7.165	35A60	23/32	1.66	35B60	3/4	1-1/2	2-1/4	1	2.48
65	7.980	7.762	35A65	23/32	1.96	35B65	3/4	1-1/2	2-1/4	1	2.78
70	8.580	8.358	35A70	23/32	2.30	35B70	3/4	1-1/2	2-1/4	1	3.12
72	8.810	8.597	35A72	23/32	2.56	35B72	3/4	1-1/2	2-1/4	1	3.42
80	9.770	9.552	35A80	23/32	3.16	35B80	3/4	1-1/2	2-1/4	1	3.82
84	10.250	10.029	35A84	23/32	3.26	35B84	3/4	1-1/2	2-1/4	1	4.24
96	11.680	11.461	35A96	23/32	4.64	35B96	3/4	1-1/2	2-1/4	1	5.16
112	13.590	13.371	35A112	23/32	5.05	35B112	3/4	1-1/2	2-1/4	1	6.70



Type A



Type B



Type B

H - Denotes hardened teeth.

Maximum bores shown, accommodate standard keyway with setscrew positioned over keyway.

\* Hub has recessed groove allowing for chain clearance. GD are as follows:

8 Teeth = 0.510in    9 Teeth = 0.635in    10 Teeth = 0.750in  
 11 Teeth = 0.890in    12 Teeth = 1.000in    13 Teeth = 1.125in