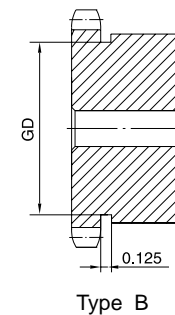
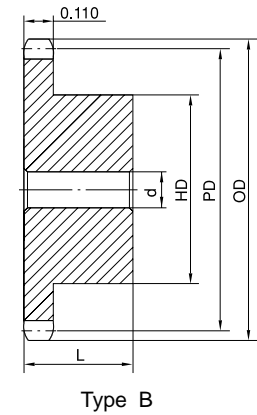
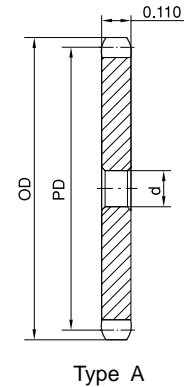


No. 25 STOCK SPROCKETS

1/4" Pitch

Single Type A & B

No. of Teeth	OD	PD	Type A			Type B					
			Part No.	d	App. Wt. (Lbs.)	Part No.	d		HD	L	App. Wt. (Lbs.)
9	0.837	0.731	25A9H	1/4	0.01	25B9H	1/4	1/4	7/16*	1/2	0.03
10	0.919	0.809	25A10H	1/4	0.02	25B10H	1/4	1/4	1/2*	1/2	0.03
11	1.002	0.887	25A11H	1/4	0.02	25B11H	1/4	5/16	9/16*	1/2	0.04
12	1.083	0.966	25A12H	1/4	0.02	25B12H	1/4	3/8	5/8*	1/2	0.06
13	1.167	1.044	25A13H	1/4	0.02	25B13H	1/4	7/16	23/32*	1/2	0.07
14	1.246	1.124	25A14H	1/4	0.03	25B14H	1/4	9/16	13/16	1/2	0.08
15	1.326	1.202	25A15H	1/4	0.03	25B15H	1/4	9/16	57/64	1/2	0.10
16	1.407	1.281	25A16H	1/4	0.04	25B16H	1/4	9/16	31/32	1/2	0.12
17	1.487	1.361	25A17H	1/4	0.04	25B17H	1/4	5/8	1-1/32	1/2	0.14
18	1.568	1.440	25A18H	1/4	0.05	25B18H	1/4	3/4	1-1/8	1/2	0.16
19	1.648	1.519	25A19H	1/4	0.05	25B19H	1/4	13/16	1-7/32	1/2	0.19
20	1.729	1.598	25A20H	1/4	0.06	25B20H	1/4	7/8	1-9/32	5/8	0.25
21	1.809	1.678	25A21H	3/8	0.06	25B21H	1/4	7/8	1-3/8	5/8	0.28
22	1.889	1.757	25A22H	3/8	0.07	25B22H	1/4	15/16	1-7/16	5/8	0.31
23	1.969	1.836	25A23H	3/8	0.07	25B23H	1/4	1	1-1/2	5/8	0.32
24	2.049	1.915	25A24H	3/8	0.08	25B24H	3/8	1	1-1/2	5/8	0.33
25	2.129	1.994	25A25H	3/8	0.09	25B25H	3/8	1	1-1/2	5/8	0.34
26	2.209	2.074	25A26H	3/8	0.10	25B26H	3/8	1	1-1/2	5/8	0.35
27	2.289	2.154	25A27H	3/8	0.11	25B27H	3/8	1	1-1/2	5/8	0.35
28	2.369	1.233	25A28H	3/8	0.12	25B28H	3/8	1	1-1/2	5/8	0.36
29	2.449	2.312	25A29H	3/8	0.13	25B29H	3/8	1	1-1/2	5/8	0.37
30	2.529	2.392	25A30H	3/8	0.14	25B30H	3/8	1	1-1/2	5/8	0.38
31	2.609	2.471	25A31H	3/8	0.15	25B31H	3/8	1	1-1/2	5/8	0.39
32	2.688	2.550	25A32H	3/8	0.15	25B32H	3/8	1	1-1/2	5/8	0.40
33	2.768	2.630	25A33H	3/8	0.17	25B33H	3/8	1	1-1/2	5/8	0.41
34	2.848	2.709	25A34H	3/8	0.17	25B34H	3/8	1	1-1/2	5/8	0.42
35	2.928	2.789	25A35H	3/8	0.19	25B35H	3/8	1	1-1/2	5/8	0.44
36	3.008	2.869	25A36H	3/8	0.20	25B36H	3/8	1	1-1/2	3/4	0.46
37	3.087	2.948	25A37	1/2	0.21	25B37	1/2	1-3/8	2	3/4	0.48
38	3.167	3.028	25A38	1/2	0.22	25B38	1/2	1-3/8	2	3/4	0.50
39	3.247	3.107	25A39	1/2	0.23	25B39	1/2	1-3/8	2	3/4	0.52
40	3.327	3.186	25A40	1/2	0.24	25B40	1/2	1-3/8	2	3/4	0.54
41	3.406	3.266	25A41	1/2	0.26	25B41	1/2	1-3/8	2	3/4	0.56
42	3.486	3.345	25A42	1/2	0.26	25B42	1/2	1-3/8	2	3/4	0.58
43	3.566	3.425	25A43	1/2	0.27	25B43	1/2	1-3/8	2	3/4	0.61
44	3.646	3.504	25A44	1/2	0.28	25B44	1/2	1-3/8	2	3/4	0.64
45	3.725	3.584	25A45	1/2	0.30	25B45	1/2	1-3/8	2	3/4	0.67
46	3.805	3.663	25A46	1/2	0.32	25B46	1/2	1-3/8	2	3/4	0.71
47	3.885	3.743	25A47	1/2	0.34	25B47	1/2	1-3/8	2	3/4	0.75
48	3.964	3.822	25A48	1/2	0.35	25B48	1/2	1-3/8	2	3/4	0.78
50	4.124	3.981	25A50	1/2	0.38	25B50	1/2	1-3/8	2	3/4	0.85
54	4.442	4.300	25A54	1/2	0.45	25B54	1/2	1-3/8	2	3/4	1.00
60	4.920	4.777	25A60	1/2	0.55	25B60	1/2	1-3/8	2	3/4	1.10
65	5.319	5.174	25A65	1/2	0.65	25B65	1/2	1-3/8	2	3/4	1.17
70	5.717	5.572	25A70	1/2	0.75	25B70	1/2	1-3/8	2	3/4	1.25
72	5.876	5.732	25A72	1/2	0.80	25B72	1/2	1-3/8	2	3/4	1.30
75	6.115	5.970	25A75	1/2	0.86	25B75	1/2	1-3/8	2	3/4	1.39
80	6.513	6.368	25A80	1/2	0.98	25B80	1/2	1-3/8	2	3/4	1.54



H - Denotes hardened teeth.

Maximum bores shown, accommodate standard keyway with setscrew positioned over keyway.

* Hub has recessed groove allowing for chain clearance. GD are as follows:

9 Teeth = 0.413in 10 Teeth = 0.492in 11 Teeth = 0.571in

12 Teeth = 0.650in 13 Teeth = 0.728in