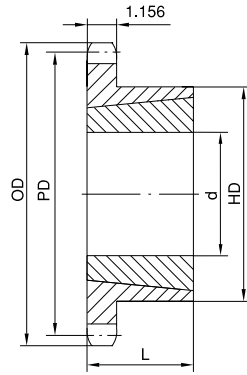
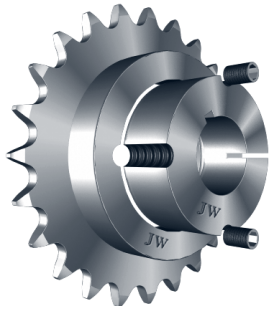
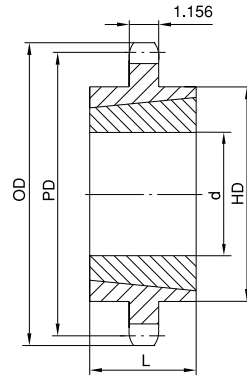


# No. 160 TAPER-BUSHED SPROCKETS

## 2" Pitch



Type B



Type C

### Single Taper-Bushed

| No. of Teeth | Type | Part No.  | Bushing | OD     | PD     | Max. Bore<br>d | HD    | L     | App. Wt. (Lbs.) |         |
|--------------|------|-----------|---------|--------|--------|----------------|-------|-------|-----------------|---------|
|              |      |           |         |        |        |                |       |       | Sprocket        | Bushing |
| 11           | B    | 160BTB11H | 2517    | 8.011  | 7.099  | 2-1/2          | 4-1/4 | 1-3/4 | 9.0             | 3.5     |
| 12           | B    | 160BTB12H | 3020    | 8.664  | 7.727  | 3              | 5-1/4 | 2     | 11.0            | 6.5     |
| 13           | B    | 160BTB13H | 3020    | 9.314  | 8.357  | 3              | 5-1/4 | 2     | 13.0            | 6.5     |
| 14           | B    | 160BTB14H | 3020    | 9.963  | 8.988  | 3              | 5-1/4 | 2     | 16.0            | 6.5     |
| 15           | B    | 160BTB15H | 3535    | 10.609 | 9.620  | 3-1/2          | 6-1/2 | 3-1/2 | 25.0            | 14.0    |
| 16           | B    | 160BTB16H | 3535    | 11.255 | 10.252 | 3-1/2          | 6-1/2 | 3-1/2 | 28.0            | 14.0    |
| 17           | B    | 160BTB17H | 3535    | 11.899 | 10.885 | 3-1/2          | 6-1/2 | 3-1/2 | 32.0            | 14.0    |
| 18           | B    | 160BTB18H | 3535    | 12.543 | 11.518 | 3-1/2          | 6-1/2 | 3-1/2 | 35.0            | 14.0    |
| 19           | B    | 160BTB19H | 3535    | 13.185 | 12.151 | 3-1/2          | 6-1/2 | 3-1/2 | 39.0            | 14.0    |
| 21           | B    | 160BTB21  | 3535    | 14.470 | 13.419 | 3-1/2          | 6-1/2 | 3-1/2 | 48.0            | 14.0    |
| 26           | B    | 160BTB26  | 3535    | 17.671 | 16.593 | 3-1/2          | 6-1/2 | 3-1/2 | 68.0            | 14.0    |
| 35           | C    | 160CTB35  | 4040    | 23.422 | 22.312 | 4              | 7-3/4 | 4     | 118.0           | 22.0    |
| 45           | C    | 160CTB45  | 4040    | 29.802 | 28.671 | 4              | 7-3/4 | 4     | 186.0           | 22.0    |
| 60           | C    | 160CTB60  | 4545    | 39.362 | 38.215 | 4-1/2          | 8-3/4 | 4-1/2 | 292.0           | 30.0    |

H - Denotes hardened teeth.